

Site Visit Report

By Ikram Muslim

General Platform System

Overview on Offshore System

- Centralized by the Mother Platform, which is where:
 - Living Quarters (LQ) is located
 - Managed by the;
 - Offshore Installation Manager (OIM) – PTW approvals, MOC approvals
 - Well Site Supervisor (WSS) –
 - Production Supervisor (PS) – Reports directly to OIM, Supervisor for Production on Wells
 - Maintenance Supervisor (MS) – Reports directly to OIM, Supervisor for Platform constructions, mechanical system etc.
 - Materials Coordinator (MATCO) – Responsible for Materials on Platform, every offload or backload is informed to or by MATCO.
 - Radio Operator (RO) – Contacts with Boat's Captain, any Satellite Platform's request, weather information, any boat movements, etc.
 - Medic – First person to report to when arrive to Platform. Responsible for bedding etc.
 - HSE – Manage the safety of facilities and conduct morning meetings.

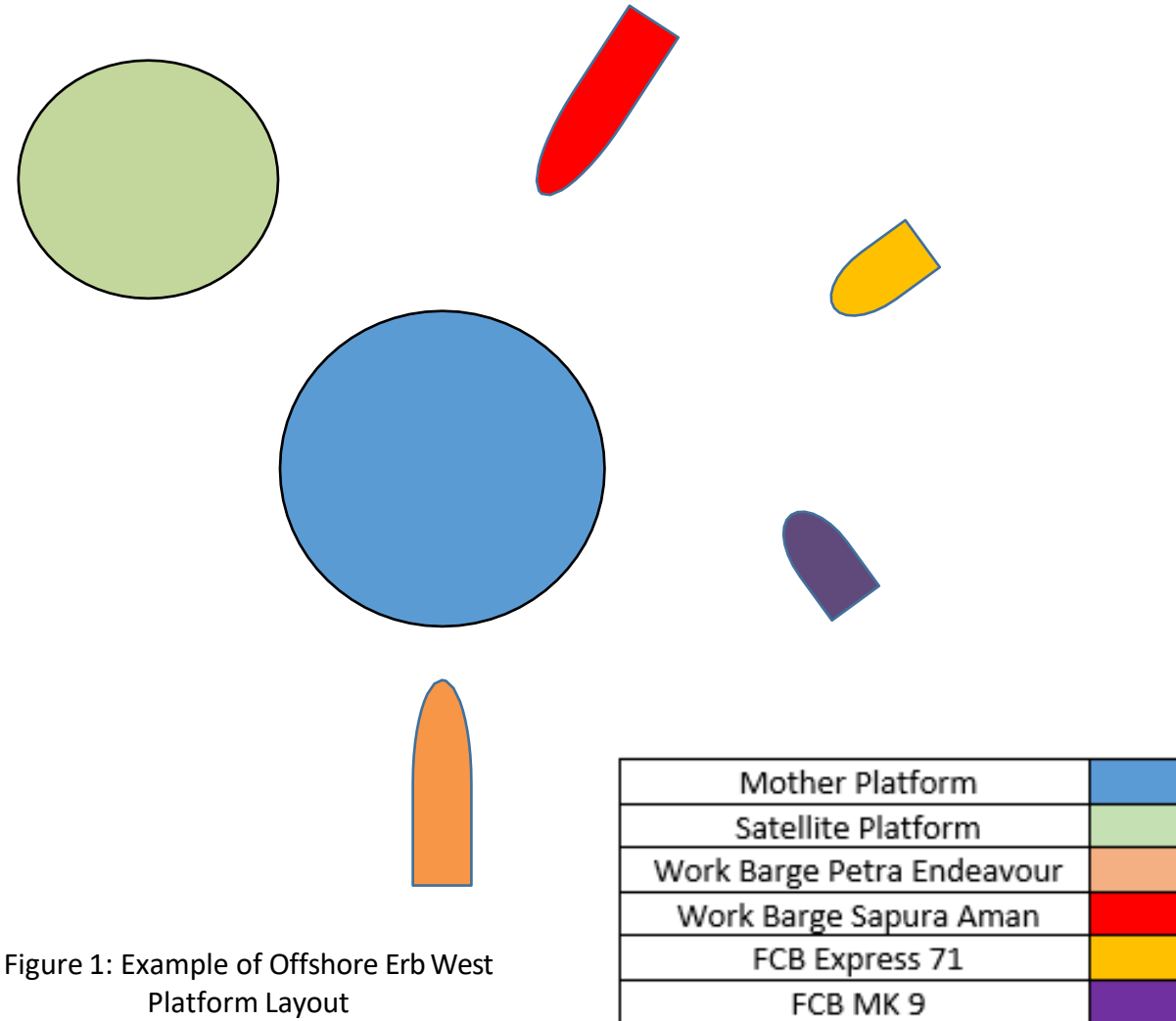


Figure 1: Example of Offshore Erb West Platform Layout

General Platform System

Platform Layout – Erb West Mother Platform



Figure 3: Erb West Alpha Platform

Note: The mother platform of EWQ-A has 4 levels in the LQ. The medic, RO, OIM, MATCO rooms is located at Level 1.

General Platform System

Platform Layout – Personnel Transfer

GANGWAY



Figure 5: Location of Personnel Transfer for interrigger/mob
from work barge

General Platform System

Rules on Mother Platform

- Stop Work is permitted to ALL Personnel
- Any Works to be done need to have PTW prior to operation
- UAUC is a must to every personnel with one for each day
- PPE is MANDATORY – Helmet, Ear muffs, Safety Glasses, Gloves, Coveralls, and Safety Boots
- Phones/Laptops are not PERMITTED outside LQ areas.

Time	Task	Remarks
06:30	Morning Meeting	1. Interrig (optional) 2. Morning Shift Starts
07:30	Operation Starts	
12:30	Lunch Hour	
16:30	Tea Break	
18:30	Dinner / Night Shift	1. Night Shift Starts
21:30	Supper	
06:30	End of Night Shift	

Figure 6: Timetable on Mother Platform

Well Intervention Team

Typical ELINE Jobs Crew

- Supervised by the Company Man/Company Service Rep. (CSR)/Well Intervention Supervisor (WIS) / Wellsite Supervisor (WSS).
 - Representative from Client's team to supervise Job to be performed.
 - Responsible for Equipment and Personnel from Well Intervention Team.
 - Any signatures or Job Witness on site will be on the WIS responsible.
 - Mobilization and Demobilization of Well Intervention Team.
- Slickline Crews.
 - Being mobbed by a team of 3; Operator, 2nd Man, and 3rd Man.
 - Slickline Mandatory operations includes:
 - Flapper Probe – To confirm TRSSSV in open condition
 - Tubing Clearance – Usually runs with Gauge Ring to clear tubing pathway/detect fluid level
 - Tag TD – To confirm possible lowest depth prior to Jobs
 - Responsible for:
 - Operator – The person who decides SL BHA, winch driver, and PCE stack ups planning.
 - 2nd Man – Assist operator with PCE/BHA Rig ups, may back to back with Operator with Winch Control
 - 3rd Man – Assist crew with PTW applications, JHA writeups
- ELINE Crew.
 - Being mobbed by a team of 4; Engineer, Crew Chief, 2nd Man, and 3rd Man.
 - Responsible for:
 - Engineers – Team Leader who communicates with clients rep, town. Job overall planning, etc.
 - Crew Chief – Assist Engineer with Equipment and PCE and/or Winch Control
 - 2nd man/3rd man – Assist the team with rig up and equipment setup and/or operates

Well Intervention Team

Job Site – Overview on Main Deck

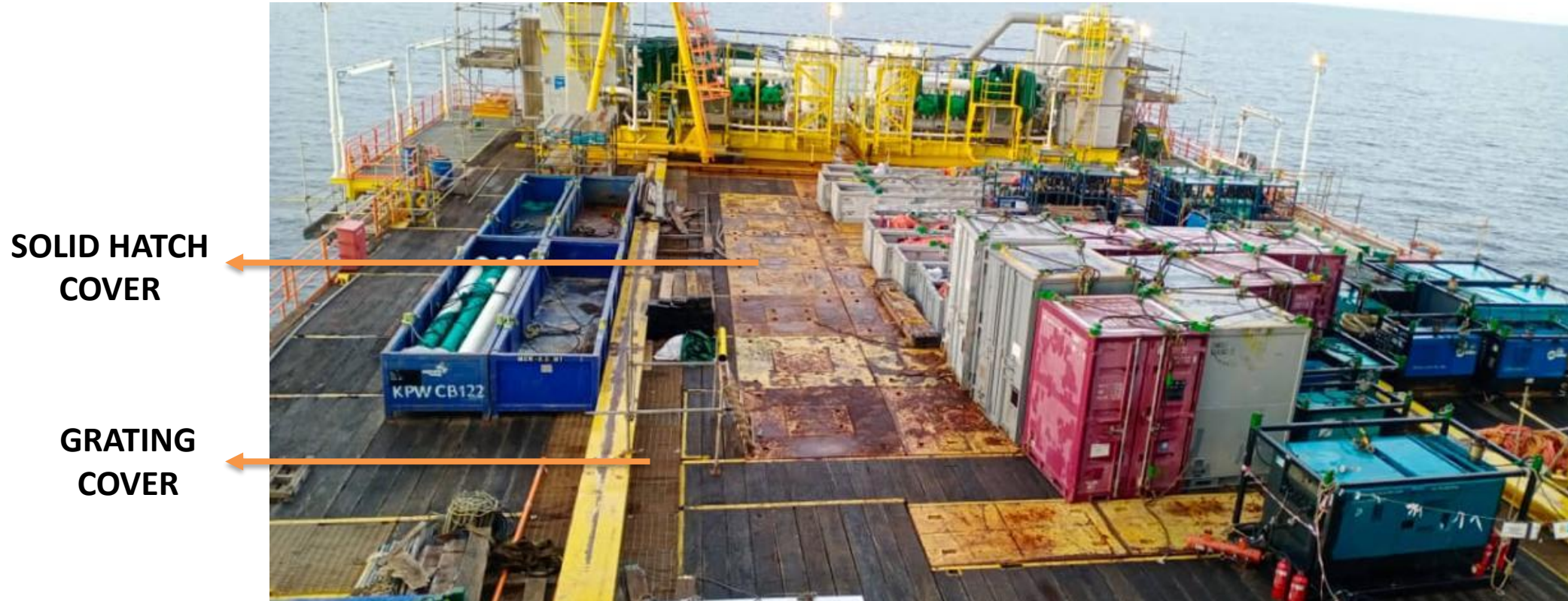


Figure 7: Example of Site Key points

Well Intervention Team

Job Site – Overview of Crane



Figure 8: Crane Configurations

Well Intervention Team

Job Site – Overview on Wells and Xmas Tree

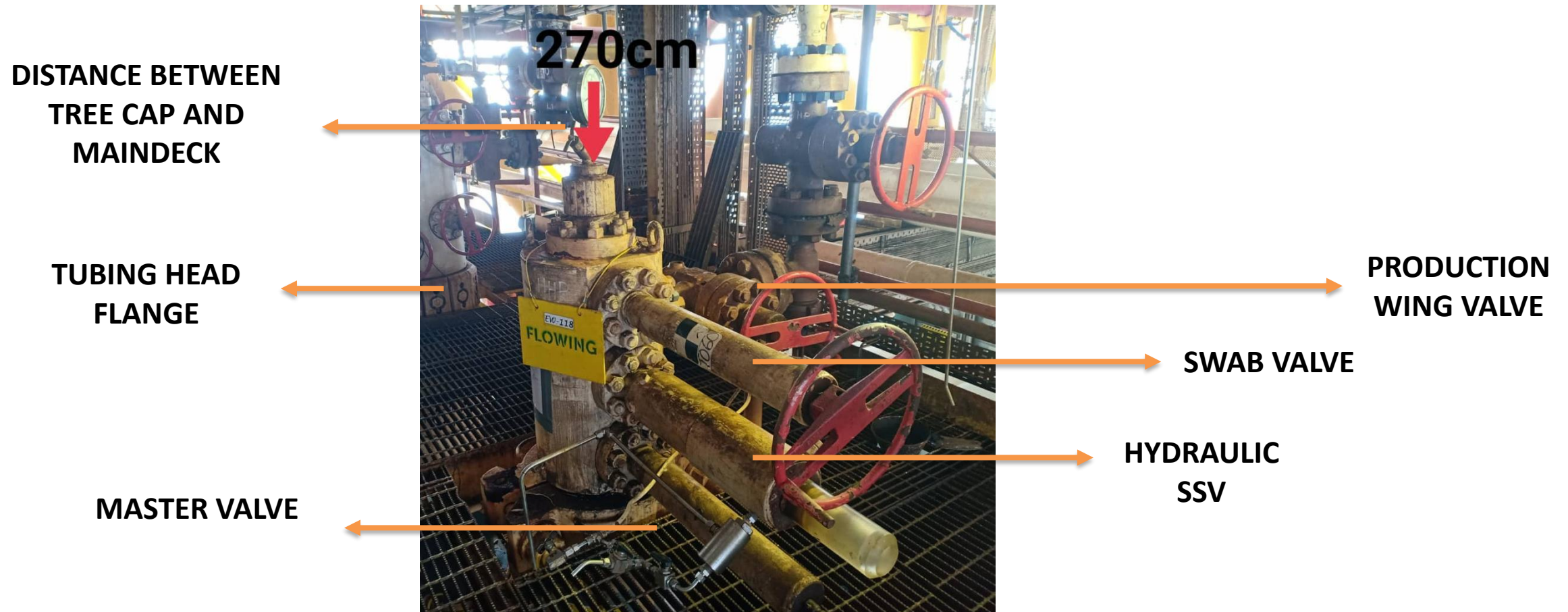


Figure 9: Wellhead/Xmas Tree configurations

Thank you !

Questions and Answering Session

Prepared by,



Name : Muhammad Ikram Muslim

Designation : Junior Field Engineer

Date : 24 November 2022

Verified by,

Name : Faris M. Firdaus

Designation : Field Service Manager

Date :

Verified by,

Name : Azahari Suhari

Designation : Operation Manager

Date :