

PLATFORM SITE VISIT REPORT



CLIENT : PCSB SBA
FIELD : SUJT
PLATFORM : SUJT-C
WELL(S) : SUJT-C08
INSPECTED BY : ABDUL HADI BIN HISHAM
DATE OF INSPECTION : 13/10/2024
REMARK : -

TABLE OF CONTENTS

MAIN DECK DETAILS

CRANE & HOISTING EQUIPMENT

WELL DETAILS

UTILITIES ONBOARD PLATFORM

HIGHLIGHTS FOR OPERATION

SUGGESTED SURFACE EQUIPMENT LAYOUT

SECTION A1 MAIN DECK DETAILS

TOP DECK/MAIN DECK DIMENSION

WIDE, OVERALL : 29 ft

LENGTH, OVERALL : 62 ft

NO OF LEVELS : 4

NO OF ESCAPE POINT : 2

NO OF LIFE RAFT/LIFE BOAT : 4

LEVELS CONFIGURATION (FROM TOP) :

- I. MAIN DECK
- II. CELLAR DECK
- III. MEZZADINE DECK
- IV. SEA DECK/SUMP PUMP DECK

HEIGHT FROM SEA LEVEL TO MAIN DECK : -

HEIGHT FROM SEA LEVEL TO LOWEST DECK : -

WIDE, USEABLE FOR E-LINE OPS ONLY : 18 ft

LENGTH, USEABLE FOR E-LINE OPS ONLY : 23 ft

PLATFORM GENERAL LAYOUT SKETCH



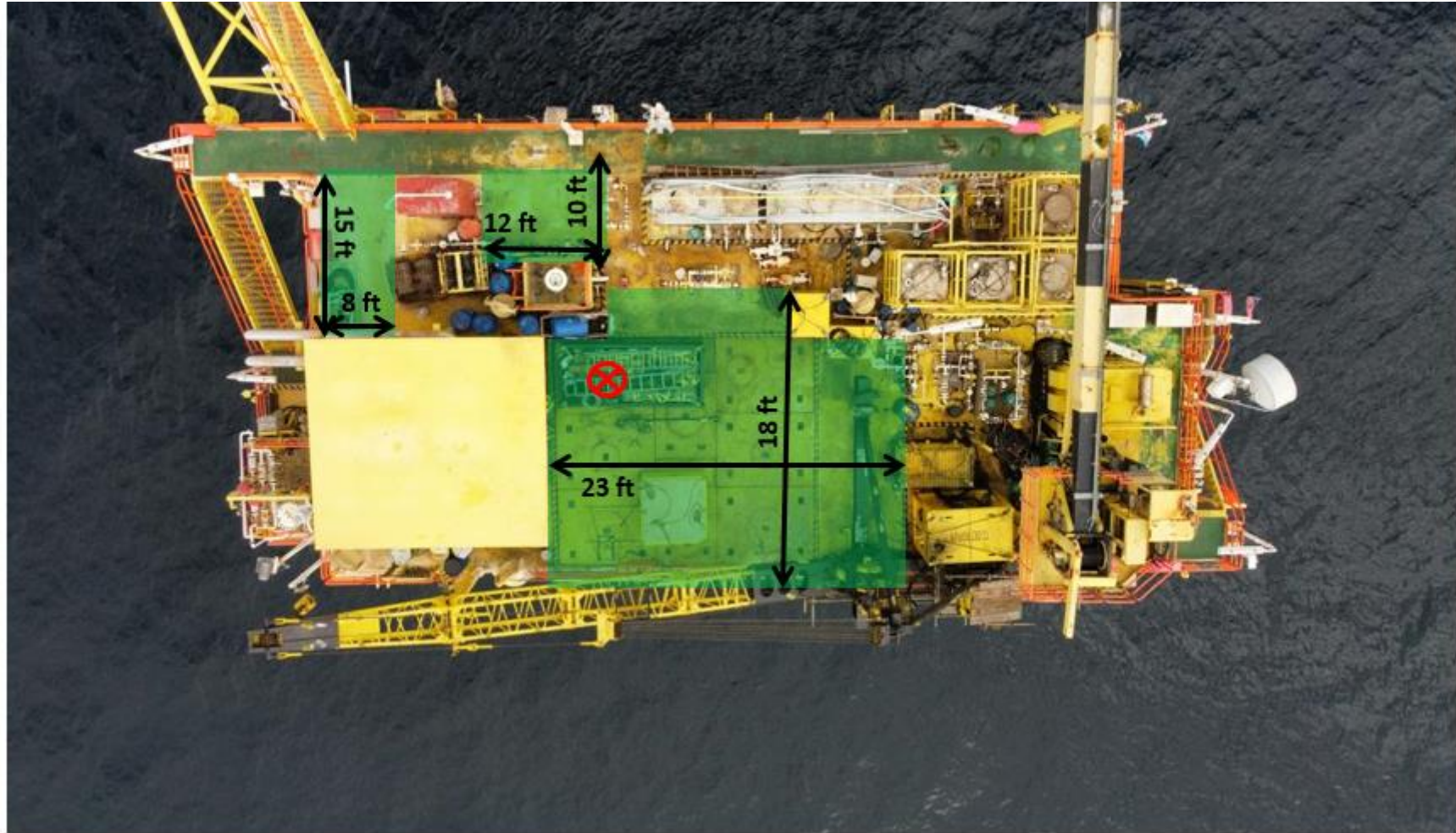


Fig: Overview of Main Deck (Top View)



Fig: Overview of Main Deck (Side View)



Fig: Plate Cover C08. Diameter: 2.5 ft

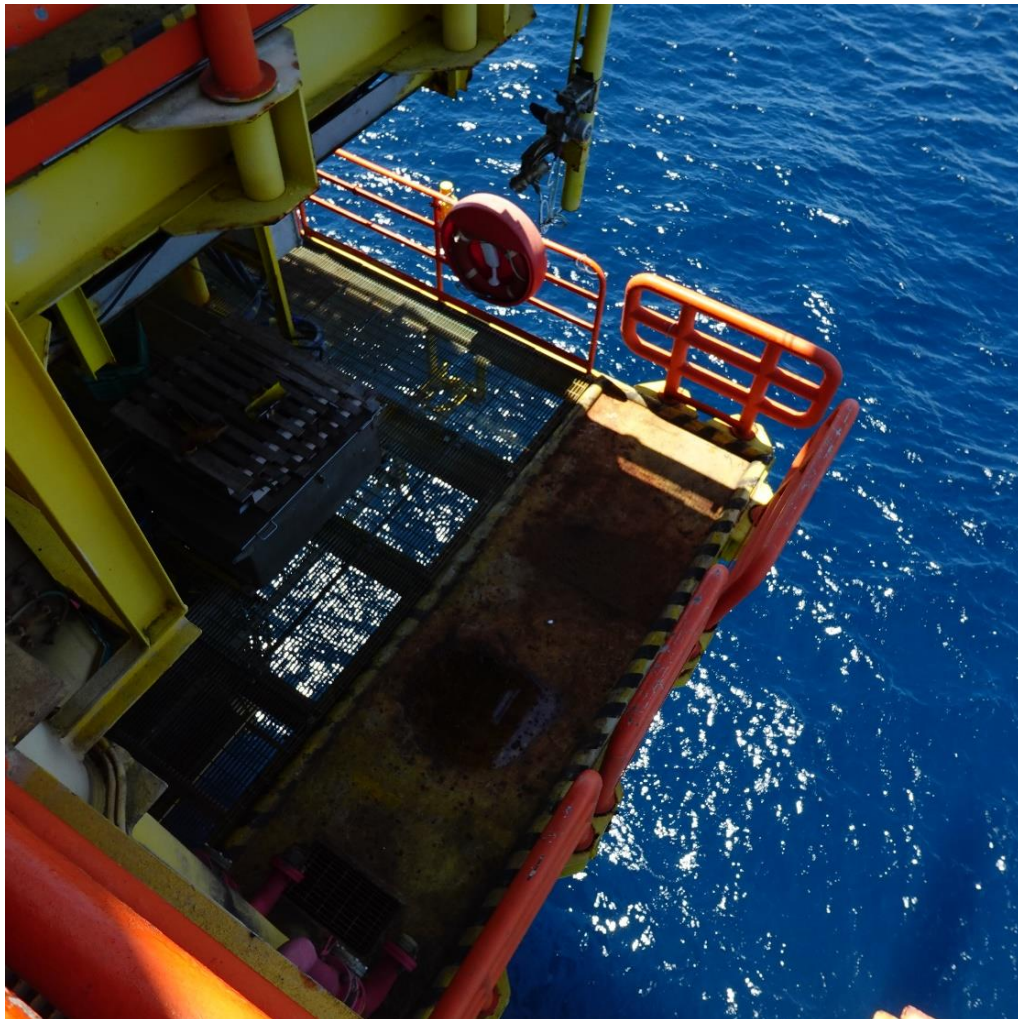


Fig: Loading Bay on Mezzanine Deck. Usable Area 12 ft x 4 ft.



Fig: Loading Bay on Cellar Deck, In Front of Control Room. Usable Area 12 ft x 4 ft.

SECTION A2 CRANE AND HOISTING EQUIPMENTS

NUMBER OF CRANE ONBOARD : 1 EA

CRANE DETAILS

TYPE OF CRANE	MAIN HOIST CAPACITY (MT)	FLY/AUX BLOCK CAPACITY (MT)	MAIN HOIST REACH LENGTH (M)	FLY/AUX REACH LENGTH (M)
MAIN CRANE	5	-	9.15	-
AUXILIARY CRANE	-	-	-	-
OTHER CRANE	-	-	-	-

Picture of Crane



Fig: Crane (Side View 1)

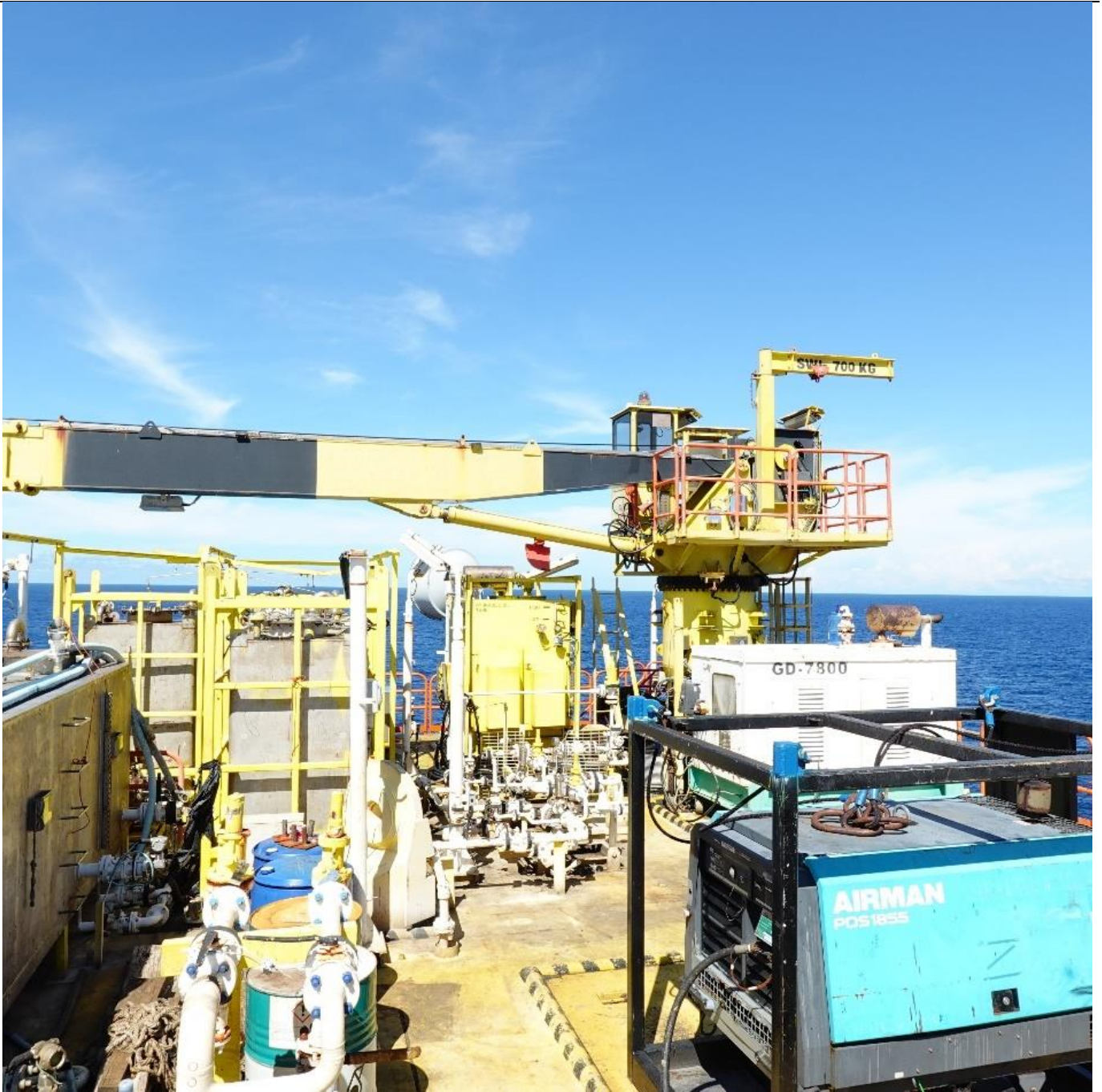


Fig: Crane (Side View 2)

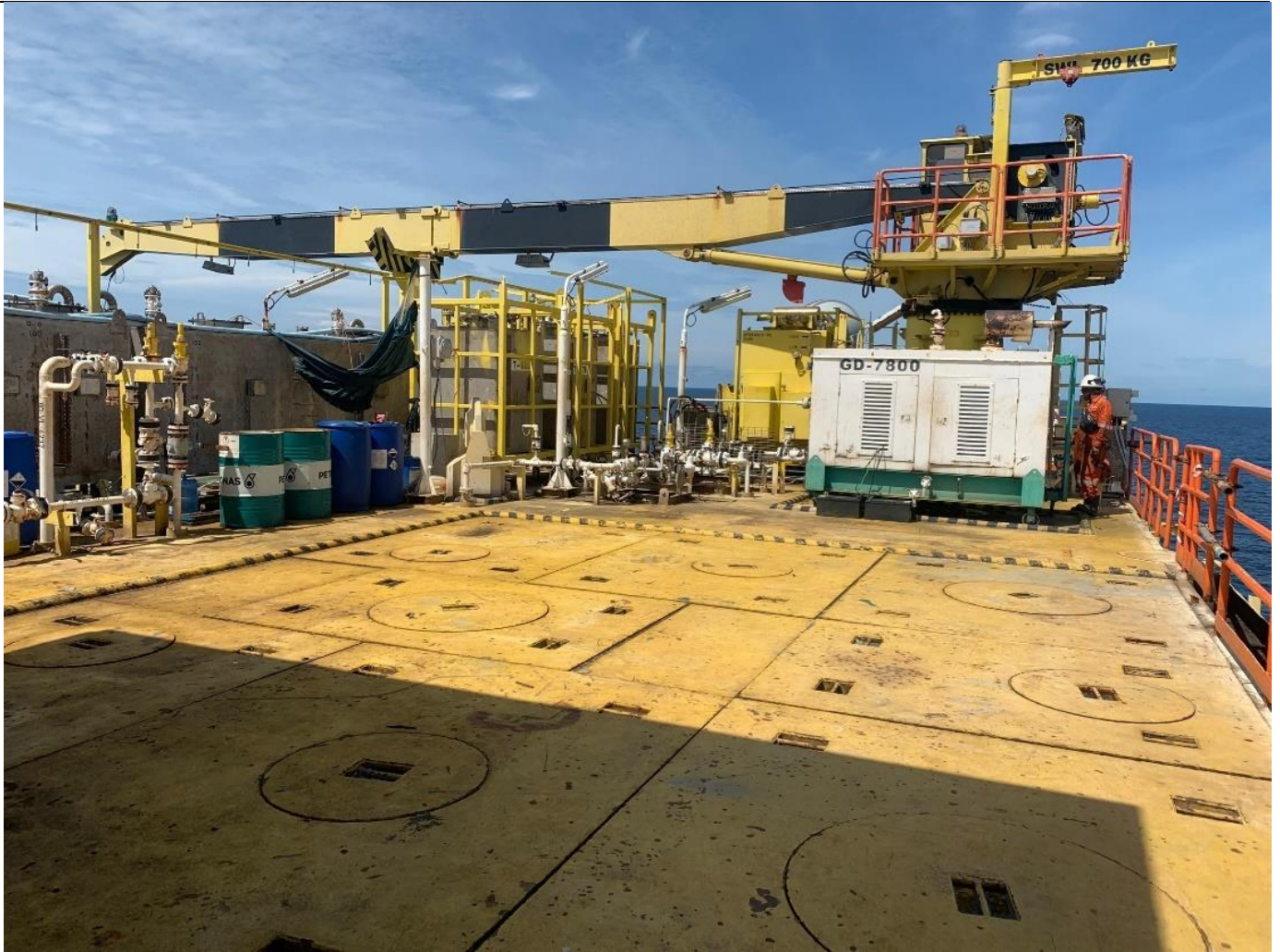


Fig: Crane (Front View 1)

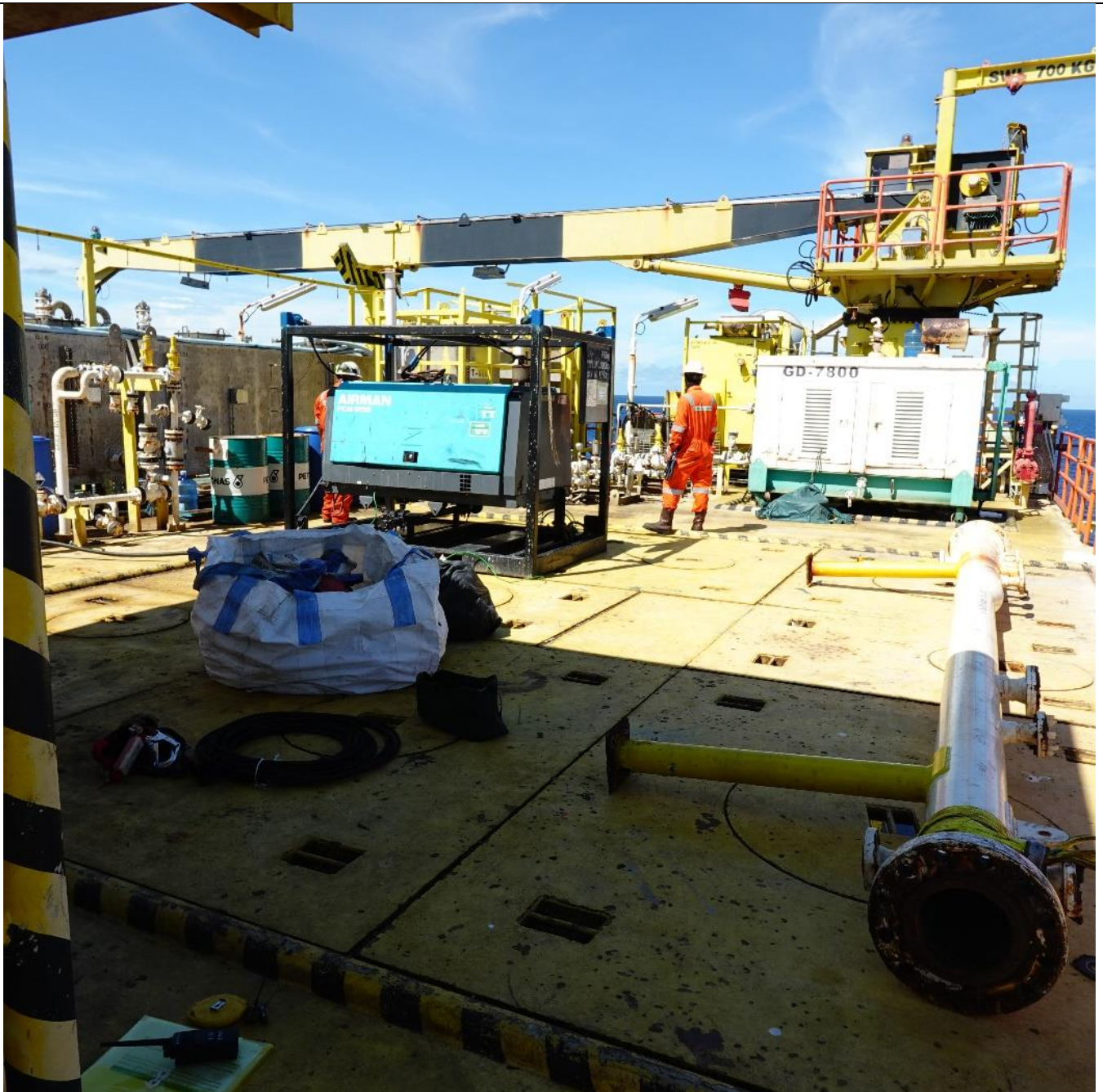


Fig: Crane (Front View 2)



Fig: Crane Specification

SECTION B WELL DETAILS (C08L)

TOTAL SLOTS ON PLATFORM : 8

TOTAL SLOTS USED : 8

EMPTY SLOTS : 0

PRIORITY WELLS : 1

 INTERVENTION HATCH COVER EXIST? : ☒ YES ☐ NO

 TYPE OF COVER ON TOP OF WELLS : ☐ GRATING ☒ PLATE (REMOVEABLE)
☐ PLATE (NON REMOVEABLE) ☐ OTHERS (PLEASE SPECIFY)

 OBSTRUCTION AROUND WELL AREA : ☒ YES (PLEASE SPECIFY) ☐ NO

Waste barrels on deck.

 WELL TYPE : ☒ OIL PRODUCER ☐ GAS PRODUCER
☐ INJECTOR WELL ☐ OTHER (PLEASE SPECIFY)

 TUBING SIZE : ☐ 2³/₈" ☐ 2⁷/₈" ☒ 3¹/₂"
☐ 4¹/₂" ☐ 5¹/₂"

 X-MAS TREE RATING : ☐ 3K PSI ☒ 5K PSI ☐ 10K PSI ☐ 20K PSI

 X-MAS TREE CONNECTION TYPE: ☒ BOWEN (NON- STANDARD) ☐ OTIS ☐ SOLAR ALERT

 X-MAS TREE CONFIGURATION : ☐ SINGLE STRING ☒ DUAL STRING
☒ CONDUCTOR SHARE WELLHEAD (CSW)/SPLITTER
☐ >2 STRING (MULTIPLE STRING)

X-MAS TREE CONNECTION SIZE : 3 1/8 SOLAR ALERT

X-MAS TREE SKETCH

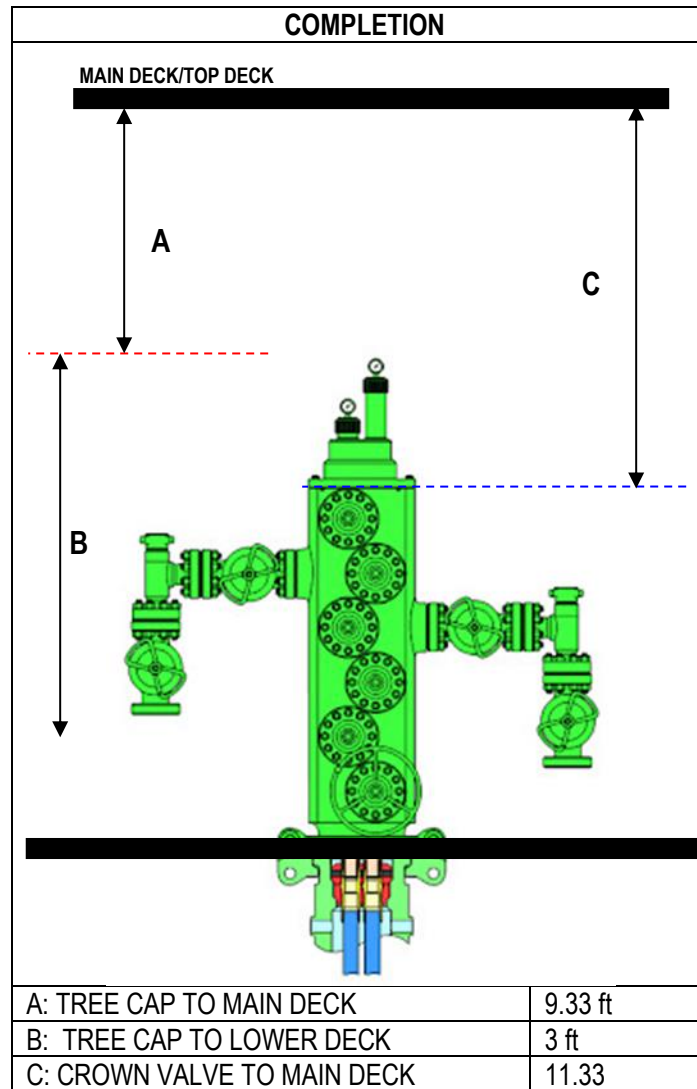


Fig: X-Mas Tree Well C08L

X MAS TREE ON CELLAR DECK

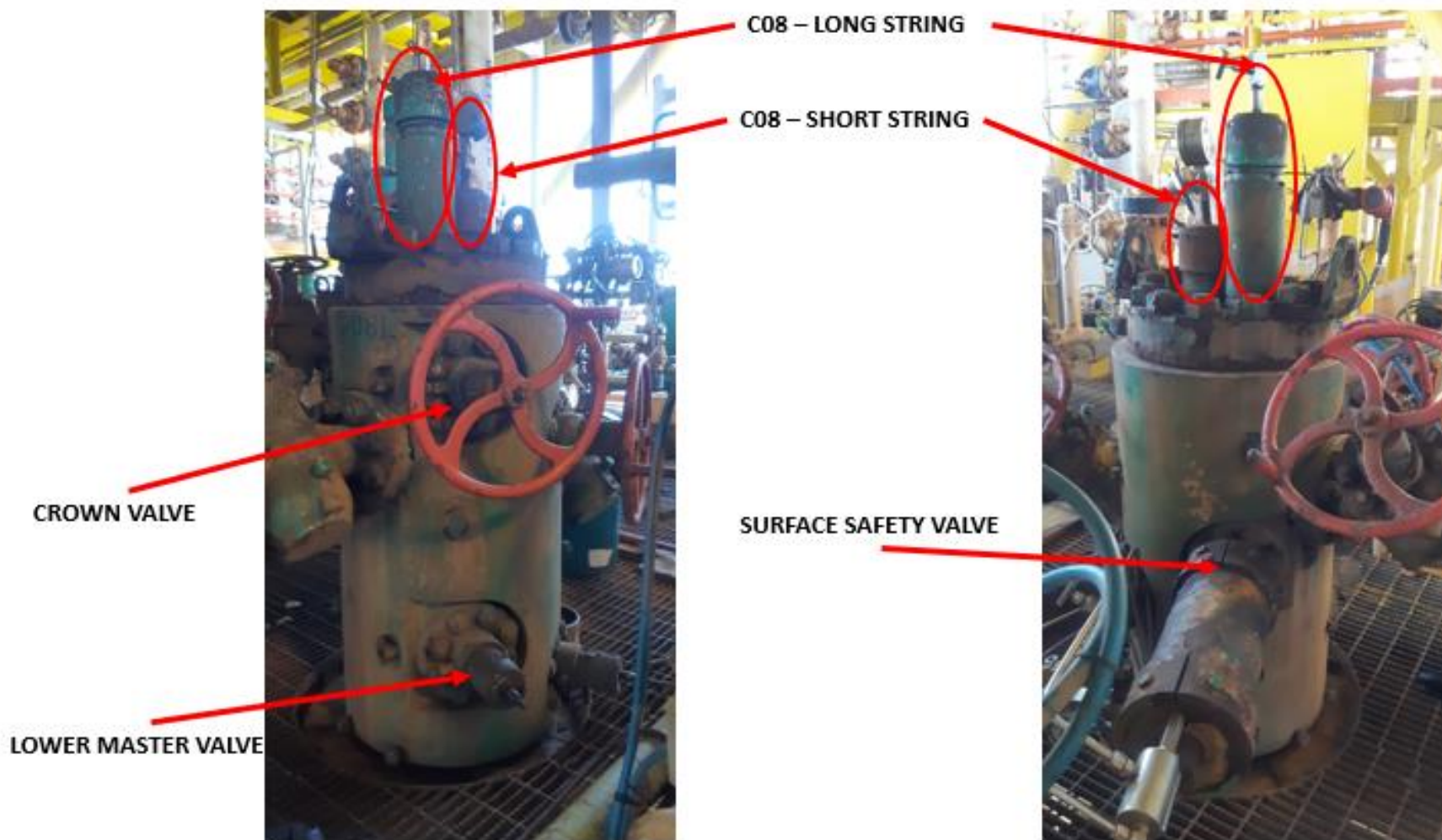


Fig: X-Mas Tree Front View (Left) & Rear View (Right).

Note: TRSCSSSV port located below X MAS tree deck (not shown above).

SECTION C UTILITIES ONBOARD PLATFORM

DIESEL, WATER & COMPRESSED AIR SUPPLY

NO DIESEL, WATER OR COMPRESSED AIR SUPPLY ON PLATFORM.

ELECTRICAL POWER SUPPLY

SUPPLY TYPE : ☒ AC ☐ DC

VOLTAGE : ☐ 110V ☒ 240/220V ☐ 415V ☐ 440V

PHASING : ☒ SINGLE PHASE ☐ 3-PHASE

MAX CURRENT : ☐ 1A ☐ 5A ☐ 10A ☐ 12/15A ☒ 20A

CONNECTION TYPE : ☐ FLYING LEADS ☒ ZONE 2 CONNECTOR
☐ TAPPED FROM DISTRIBUTION PANEL

CABLE LENGTH : NO CABLE PROVIDED.

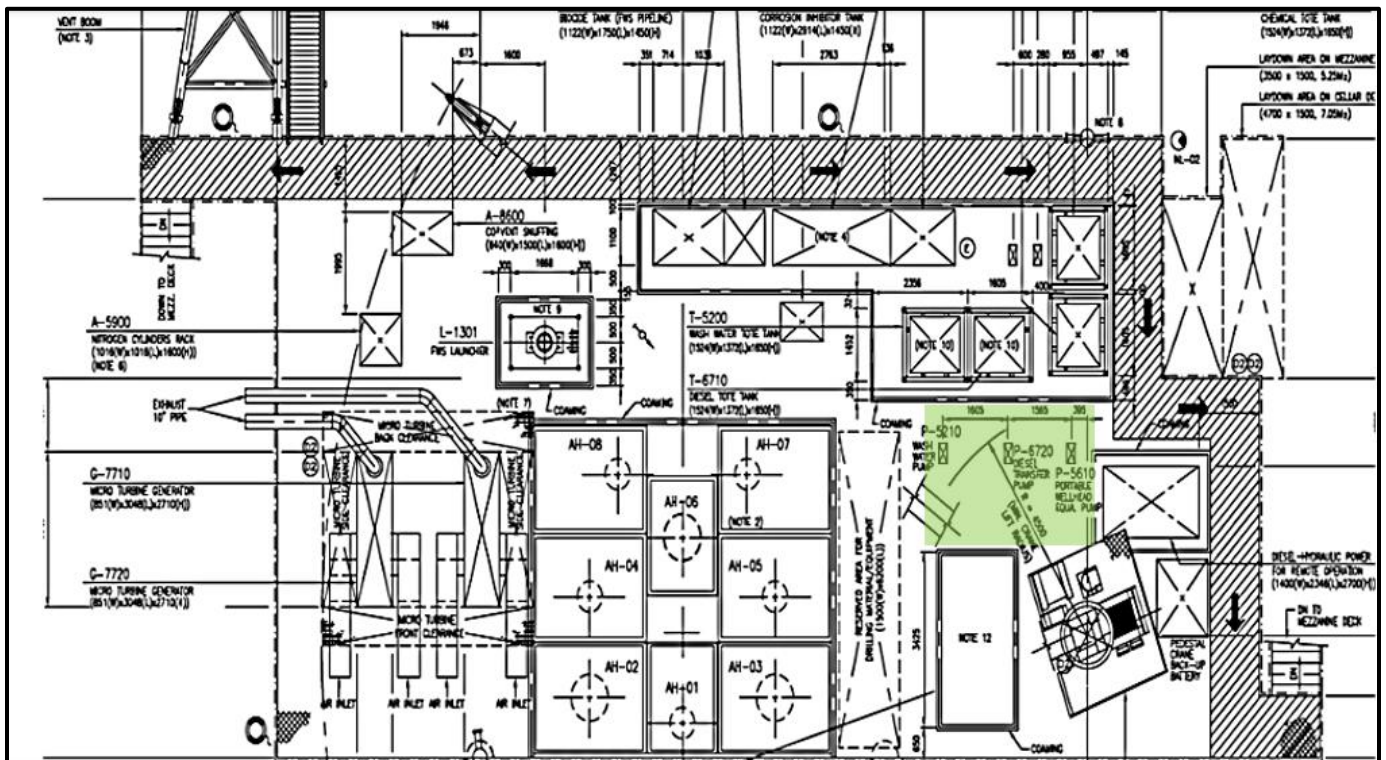


Fig: Main Deck Layout with Green Area Highlighted, Showing Location of Electrical Power Supply



Fig: Single Phase 240/220 VAC Power Source on Main Deck.

Additional Image for Reference:



Fig: Escape Rope



Fig: Escape Rope



Fig: Life Raft for 8pax



Fig: Life Raft for 25pax



Fig: Life Jacket Box



Fig: Emergency Escape Route



Fig: Rear Main Deck Area

HIGHLIGHT/NOTES FOR THE OPERATION

I. Lighting

- Platform fluorescent light is insufficient. Recommended to bring at least two (2) portable spot lights for clear view on main deck, especially directed to mast & surface equipment which are isolated from logging cabin's lights for convenient refueling & gauge viewing.
- Platform lights sufficient for wellhead area. However, recommended to bring one (1) spot light to as platform lights are yellow-colored and may cause severe glaring.

II. Deck space

Deck space is sufficient for e-line activity with the recommendations shown below:

- Placement of open top tray (OTT) & storage box at nearby platform (SUPG-B) after offloading contents at SUJT-C due to limited deck space.
- Placement of genset using crane on loading bay at cellar deck or mezzanine deck.

III. Crane

- Split mast into two (2) parts, i.e., column and skid, to avoid exceeding crane SWL (5 MT).

IV. Others

- Recommended to confirm well string with platform SOR & WSS as the conductor is consisted of two (2) strings (long & short) to avoid entering of incorrect well.
- Recommended to build shelter using scaffolding & canvas at rear main deck area prior to operation as preparation for bad weather. The only available shelter on platform is the control room at cellar deck (limited space for approx. four (4) people).
- Recommended to request diesel supply from nearby platform (SUPG-B) as SUJT-C does not have any diesel supply source.

SUGGESTED SURFACE EQUIPMENT LAYOUT

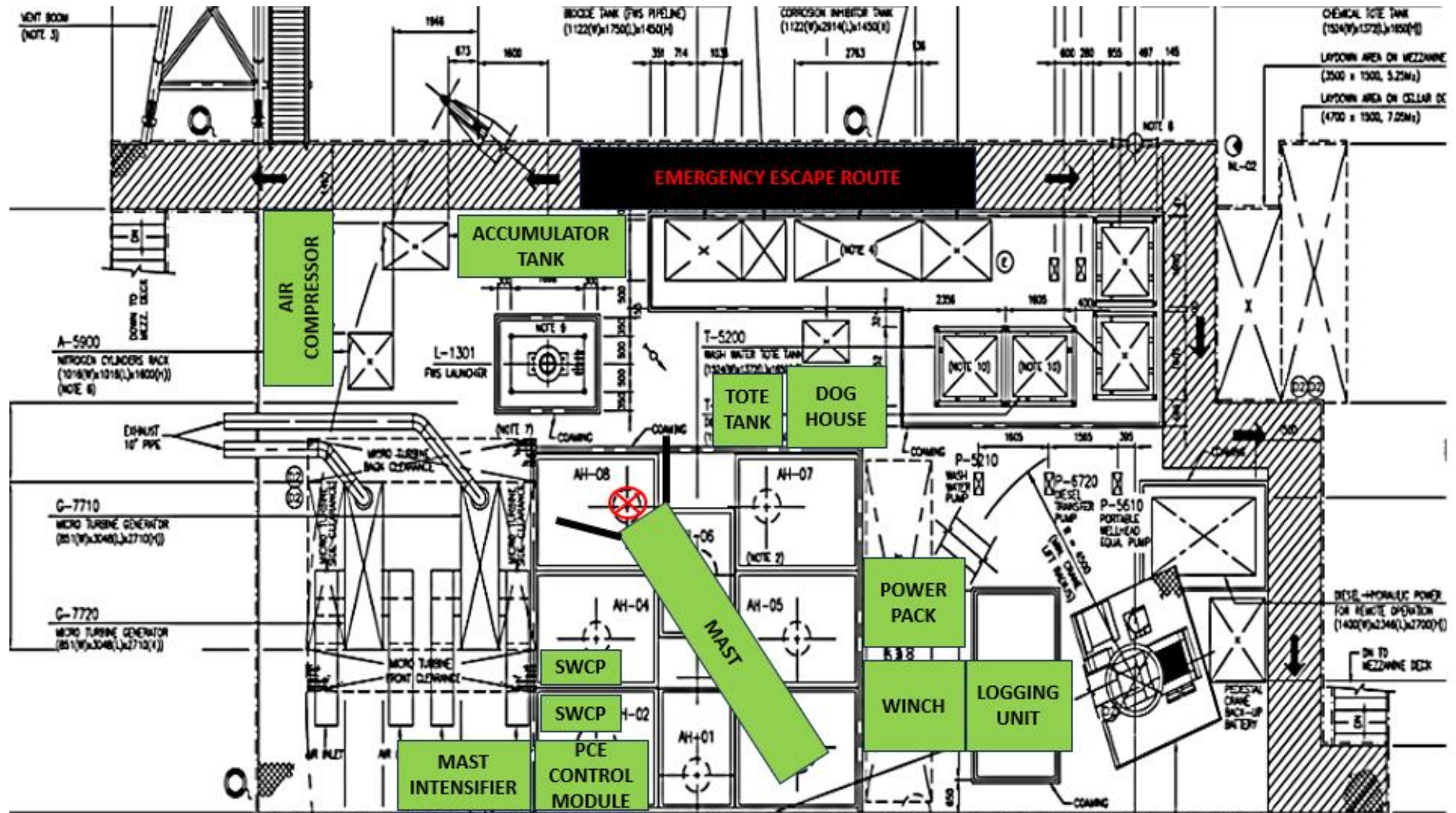


Fig: Suggested Surface Equipment Layout

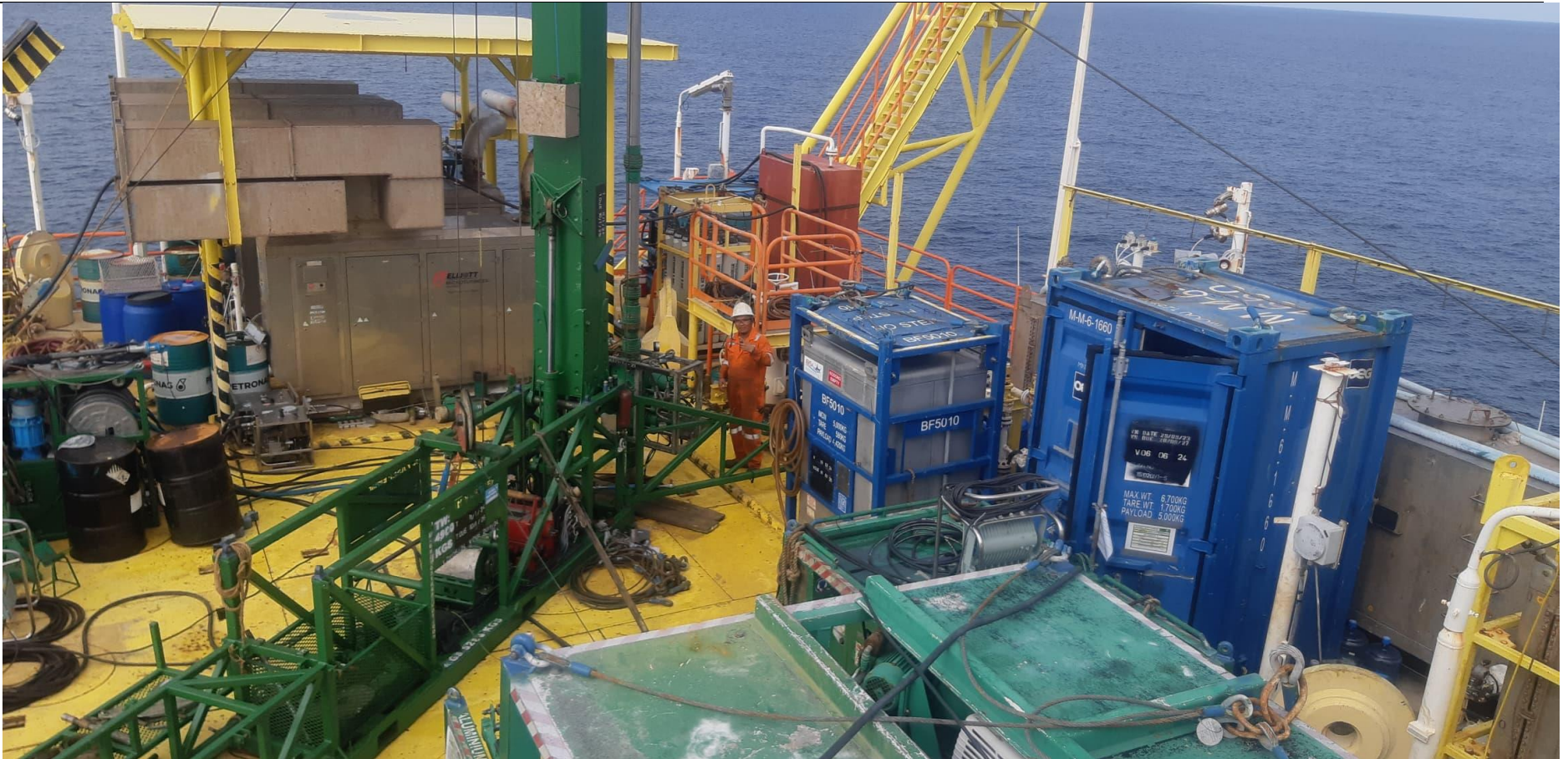


Fig: Main Deck View from Crane



Fig: Main Deck View from Viewing Tower