

22 May 2023 to 26 May 2023 (Muhd Hasnawi Bin Sudarso)

\*how much supply pressure from pump hydraulic ?

-system pressure set @2500 psi

\*what components that certified in zone 2 include in power pack?

-exhaust gas cooler

-exhaust flame trap

-exhaust rain cap

-inlet air filter

-inlet flame arrestor

-secure disptick

-fuel shut valve

-emergency stop

-non metal blow fan

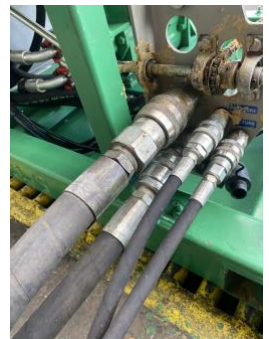
-anti static fan belt



\*what size pin x line from top to bottom

-top ¼ brass pin

-bottom 5/16 brass pin



\*what size hose supply and return for power pack?

-supply 1" (5510 psi)

-return 1-1/4" (1815 psi)

# DIMENSION BID

# week 24

## Slickline Assistant Onshore On-the-Job Training Record

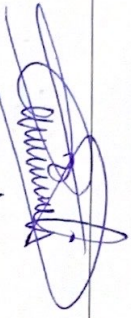
Trainee's Name:		Maha Hameiri B. Sadaas		Job Title:		TSA report	
Month		May		Training Period:			

No.	Main Tasks (please describe tasks and specify name of tools / equipment)	Training Date	Training Time		Total Hours	PR*	Signature	
			From	To			Trainee	Instructor
①	-for presentation TSB	22 May 2023	9:00	17:00	8			
②	- Practical SE - Practical DHT	23 May 2024	9:00	17:00	8			
③	- Practical BCE - Practical DH (Continue)	24 May 2024	9:00	17:00	8			
④	- Question from management - How much pressure from pump hydraulic - System pressure 2500 psi - What size pin & line? - tug vs bottom 5/16 and 6 pin	25 May 2024	9:00	17:00	8			
⑤	- Question from management - What size supply and return work ER? - Supply (16510153) - Return 1-1/4 (1615961)	26 May 2024	9:00	17:00	8			
Total Hours					40 H			

\* Performance Rating (PR): S - Strong A - Adequate NI - Improvement Needed



# DIMENSION BID

Approved by:		Overall Assessment:	<div></div>
Designation	GAZALI MEHRY Operation Manager		
Date	Dimension Bid (M) Sdn Bhd (East Malaysia Operation)		

26/5/23

Good. Continue the assessment  
at offshore.