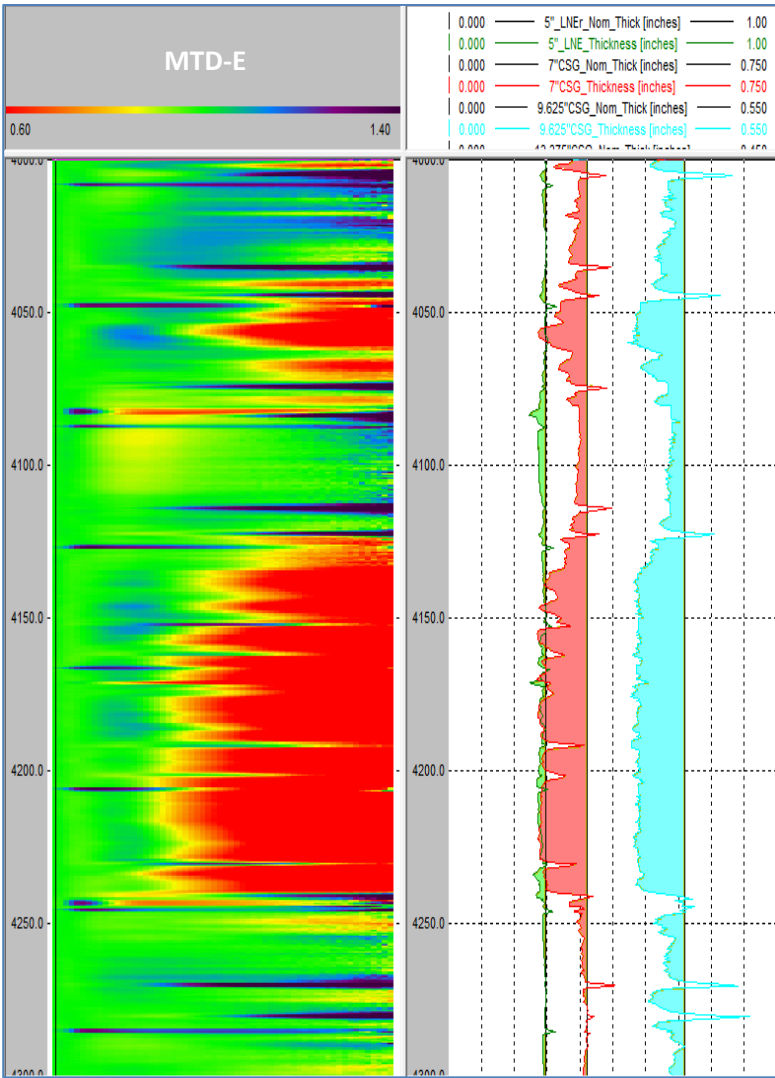


Advantage of using EM tool for corrosion evaluation in real time intervention



Challenge

- A Middle East operator has an old well with a leak from an extensive corroded 7" and 9 5/8" casing. They installed 5" liner back in 2002 hoping that the leak will be stopped.
- The request is to check and monitor the corrosion status in 7" and 9 5/8" casing and also to check whether the corrosion did extend to 5" liner.
- This was a high priority job as the work over rig was on stand by and needed a decisive answer to plan and act a remedial action accordingly

Solution

A team of GoWell personnel with wide expertise and knowledge regarding the well monitoring and intervention proposed to use MTD tool (Magnetic Thickness Detector). The capabilities of this EM tool will aid to identify / Monitor corrosion percentage for each individual pipe separately.

Results

- The advanced interpretation showed that there was an increase in the corrosion percentage for 7" and 9 5/8" casings.
- The results also showed that 5" liner was affected by corrosion and the tool was able to detect possible holes in the liner.
- The client was able to assess the problems which made them plan a proper well intervention and remedial actions to fix and repair the leak in liner.
- The client was able to achieve the conclusive results within short time limit (8 hours) and with less cost possible.

