



Ford Lane
Bramshill
Hook
Hampshire
RG27 0RH
England

Tool Code: ASB
Document: MN-ASB-A
Adaptor with Ultrawire Terminator

ADAPTOR WITH ULTRAWIRE™ TERMINATOR

For all diameter adaptors

Operational & Maintenance Manual

Date: 10th April 2003

Author: Susan Allen

Revised:

Approved: Robert Holding

Tel. +44(0)118 9326755
Fax. +44(0)118 9326704

<http://www.sondex.co.uk>
email: sondex@sondex.co.uk

Contents

0	About This Manual	0-1
0.1	Manual History	0-1
0.2	Updates To Be Used With This Manual	0-1
0.3	Technical Help	0-1
0.4	Feedback	0-1
1	Operation & Maintenance	1-1
1.1	Description	1-1
1.2	Safety	1-1
1.3	Maintenance	1-1
1.3.1	Electrical Checks	1-1
1.3.2	Cleaning	1-1
1.4	Storage	1-1
APPENDIX A	Drawings & Parts Lists	A-1
A.1	Mechanical Drawings	A-1
A.2	Electrical Drawings	A-1

0 ABOUT THIS MANUAL

0.1 MANUAL HISTORY

Date	Issue	Description	Auth	Chk	App
11/04/03	A	Initial release.	SA	DMO	RLH

0.2 UPDATES TO BE USED WITH THIS MANUAL

Date ^a	Update	Description
None		

^a Note: this chapter shall be updated to include information on manual updates to be used with this manual, irrespective of current manual issue.

0.3 TECHNICAL HELP

For further technical help contact Sondex as follows:

Address: Ford Lane, Bramshill, Hook, Hampshire, RG27 0RH, UK
 Telephone: +44(0)118 932 6755
 Fax: +44(0)118 932 6704
 Email: support@sondex.co.uk

0.4 FEEDBACK

Please help us to improve future issues of this manual by sending comments or corrections to Sondex as above.

In your feedback please make reference to:

- The manual title, version and section
- Misprints, errors or unclear explanations
- General comments and suggestions.

Thank you.

Photographs and sketches are for illustration purposes only. Depending on the tool model that you have, certain features or dimensions may differ from those shown.

1 OPERATION & MAINTENANCE

1.1 DESCRIPTION

The Adaptor with Ultrawire Terminator (ASB) is required to reduce telemetry pulse overshoot.



Warning! Ultrawire toolstrings **must** always have an Ultrawire BUL, Ultrawire Adaptor ASB or bottom flowmeter tool fitted to ensure correct data downhole.

Note: Short toolstrings may appear to operate without a terminator fitted, however once downhole the data may not be useful due to excessive noise on the line.

1.2 SAFETY

There are no specific safety precautions associated with this tool.

1.3 MAINTENANCE

1.3.1 ELECTRICAL CHECKS

- 1 The capacitance can be checked with a capacitance meter between line and chassis. Alternatively check between line and chassis using a multimeter (set to a high resistance). The meter should show the capacitor charging via the resistor and will indicate FSD fully charged. Check other direction; the result should be the same.



Warning! Do not use a mega to check the PCB.

- 2 Check the conformal coating is not damaged.
- 3 It is recommended to replace the whole ASB assembly if faulty. Disassembly is not recommended, but if it is disassembled it is vital that the PCB is resealed correctly.



Warning! If the board is removed ensure the conformal coating is replaced. Otherwise the PCB could become damaged.

1.3.2 CLEANING

Wash with warm soapy water if contaminated. Rinse and dry thoroughly.



Warning! Solvents may damage the conformal coating.

1.4 STORAGE

The ASB should be stored with thread protectors (item 8, Drawing 11545) fitted.

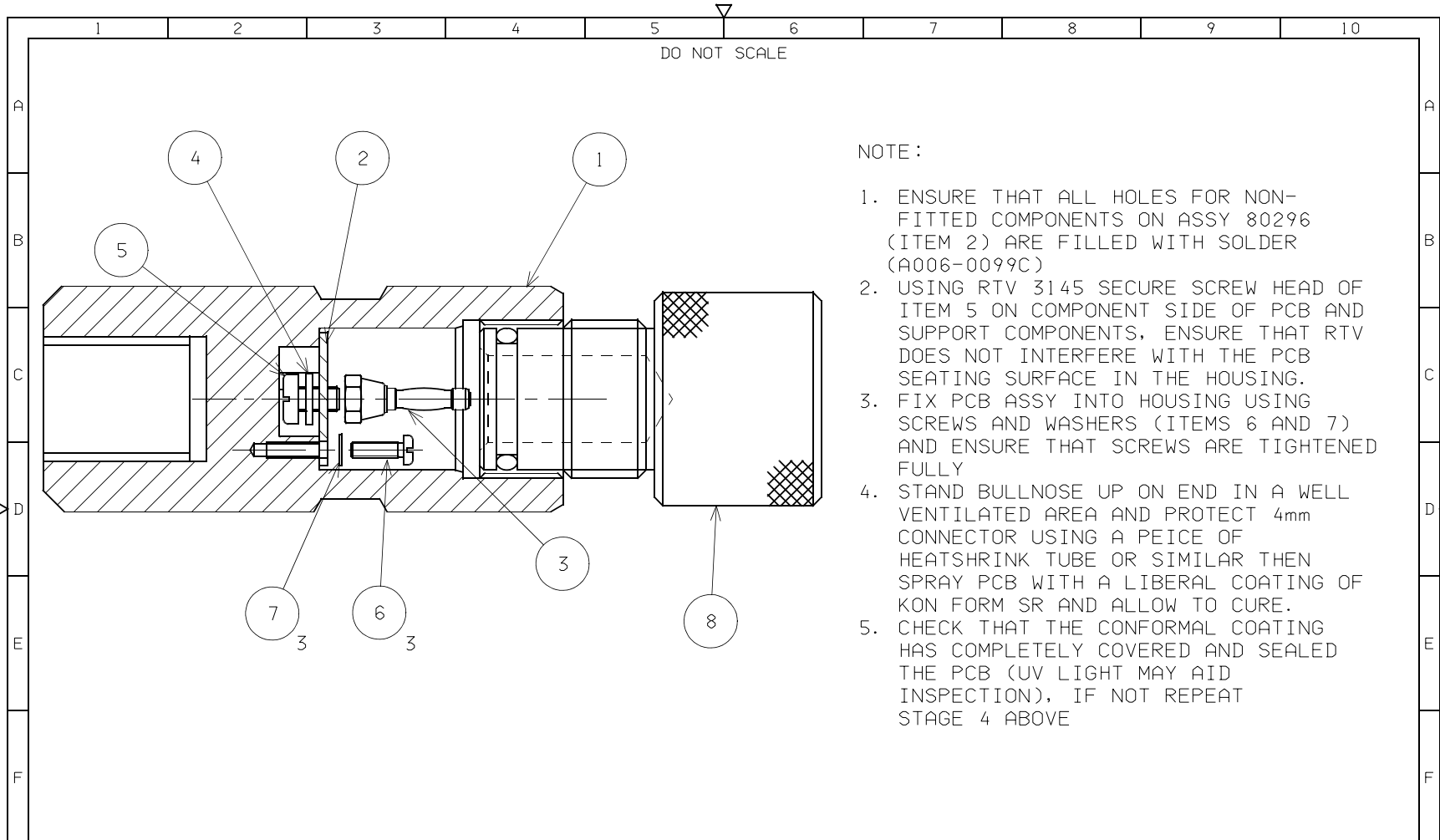
APPENDIX A DRAWINGS & PARTS LISTS

A.1 MECHANICAL DRAWINGS

Description	Drawing	Parts List
ASB004 1 ¹¹ / ₁₆ " General Assembly	<i>11545-PT1</i>	<i>11545-PT1</i>

A.2 ELECTRICAL DRAWINGS

Description	Type	Drawing
Electronic Assembly	Circuit Diagram	<i>CD-80296-B</i>



NOTE :

1. ENSURE THAT ALL HOLES FOR NON-FITTED COMPONENTS ON ASSY 80296 (ITEM 2) ARE FILLED WITH SOLDER (A006-0099C)
2. USING RTV 3145 SECURE SCREW HEAD OF ITEM 5 ON COMPONENT SIDE OF PCB AND SUPPORT COMPONENTS, ENSURE THAT RTV DOES NOT INTERFERE WITH THE PCB SEATING SURFACE IN THE HOUSING.
3. FIX PCB INTO HOUSING USING SCREWS AND WASHERS (ITEMS 6 AND 7) AND ENSURE THAT SCREWS ARE TIGHTENED FULLY
4. STAND BULLNOSE UP ON END IN A WELL VENTILATED AREA AND PROTECT 4mm CONNECTOR USING A PEICE OF HEATSHRINK TUBE OR SIMILAR THEN SPRAY PCB WITH A LIBERAL COATING OF KON FORM SR AND ALLOW TO CURE.
5. CHECK THAT THE CONFORMAL COATING HAS COMPLETELY COVERED AND SEALED THE PCB (UV LIGHT MAY AID INSPECTION), IF NOT REPEAT STAGE 4 ABOVE

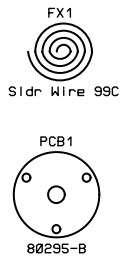
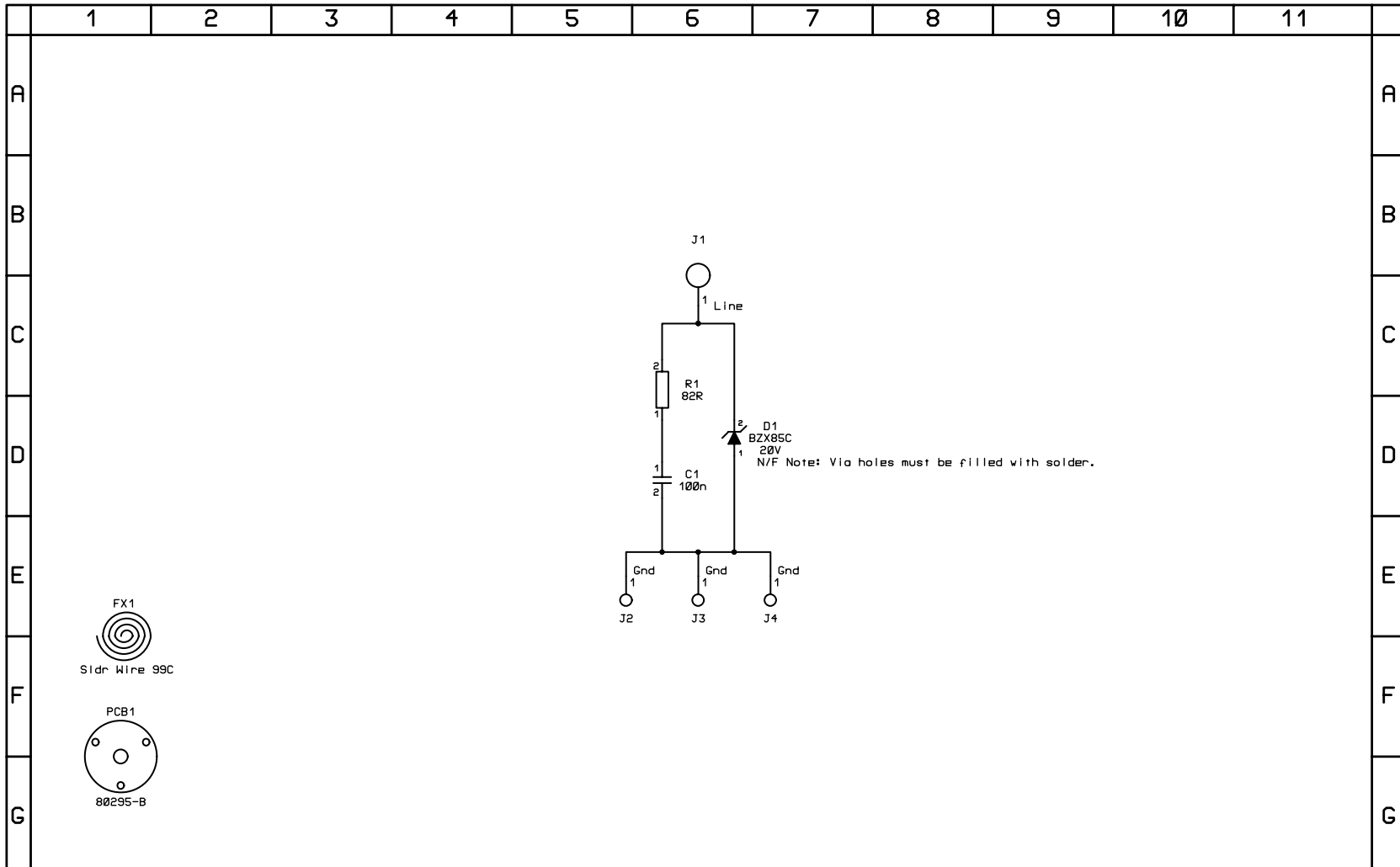
DRAWN GPW	CHECKED TLS	APPROVED TLS	ISS .PTI	DESCRIPTION INITIAL RELEASE	APPD TLS	DATE 24/03/03	Sondex Tel. 0118 932 6755 THIS DRAWING IS THE PROPERTY OF Sondex AND SHALL NOT BE COPIED OR USED WITHOUT PRIOR PERMISSION	MACHINE FINISH 63/	USED ON AMB004	TITLE ASSY #1 11/16 XOVER TO 15/16 SR	
DATE 28/05/02	DATE 24/03/03	DATE 24/03/03						GEN TOL 0. X ±0.020" 0. XX ±0.010" 0. XXX ±0.005" ANGLE ±0.5°	SHEET 1/1	DRAWING No. 11545	ISSUE .PTI
DIM IN INCHES		MATL : SEE DETAIL DRAWING		THIRD ANGLE PROJECTION							
SCALE 1 : 1	A 4										

PARTS LISTING					
Part: 11545	Issue: PT1		Drawn: GPW	Checked: TLS	Approved: TLS
			Date: 28/05/2002	Date: 24/03/2003	Date: 24/03/2003
Description: Assy 1 11/16 xover to 15/16 SR					

CHANGE HISTORY				RELATED DOCUMENTS			
Iss	Date	Remarks	Chkd	Appr	# Documents	Issue	Notes
PT1	24/03/2003	INITIAL ISSUE	TLS	TLS			

PARTS LIST							
Item	Part No.	Issue	Description	Component Value	Qty	Units	Remarks
001	07348	PT1	Adaptor sub, 1 11/16 xover to 15/16 SR		1	ea	
002	80296	B	Assy, Ultrawire Telemetry, Terminator Board		1	ea	
003	01028	C	Assy, Banana Pin (4mm)		1	ea	
004	93068	-	Washer Star 10-32		1	ea	
005	93234	-	Screw Pan Hd Slotted 10-32UNFx1/4 Lg SS		1	ea	
006	93050	-	Screw Pan Hd Slotted M3x10mm Lg SS		3	ea	
007	93002	-	Washer, Star, M3, SS		3	ea	
008	10148	A	Thread Protector, Male, Standard, (Upper End) with O'Ring		1	ea	
009							
010	T006-03145	-	Sealant Silicone RTV3145 clear silastic High Strength			(AR)	
011	T007-0CTSR	-	Conformal Coating, Silicone, UV marker, -64C to +199C	CTSR-12		(AR)	
012	A006-0099C	-	Solder Wire 99C, 99%Sn 0.9%Cu max.	Sldr Wire 99C		(AR)	

(AR = As Required)



ISS.	REV.	ECR NUMBER, REMARKS	CHKD	APPR	DATE	TITLE	DRAWING NUMBER	ISSUE	REVISION
B		ECR1189	DJ	PEJR	29/5/02	SONDEX LTD FORD LANE, BRAMSHILL, HOOK, HAMPSHIRE, RG27 0RH, ENGLAND TEL: +44 (0) 118 932 6755 FAX: +44 (0) 118 932 6704 This document contains proprietary information. Copyright 2001 © Sondex Ltd.	CD-80296	B	
							DRAWN: PEJR CHECKED: DJ APPROVED: PR		
							DATE: 14/01/02 DATE: 29/5/02 DATE: 29/5/02		
							SHEET 1 OF 1		