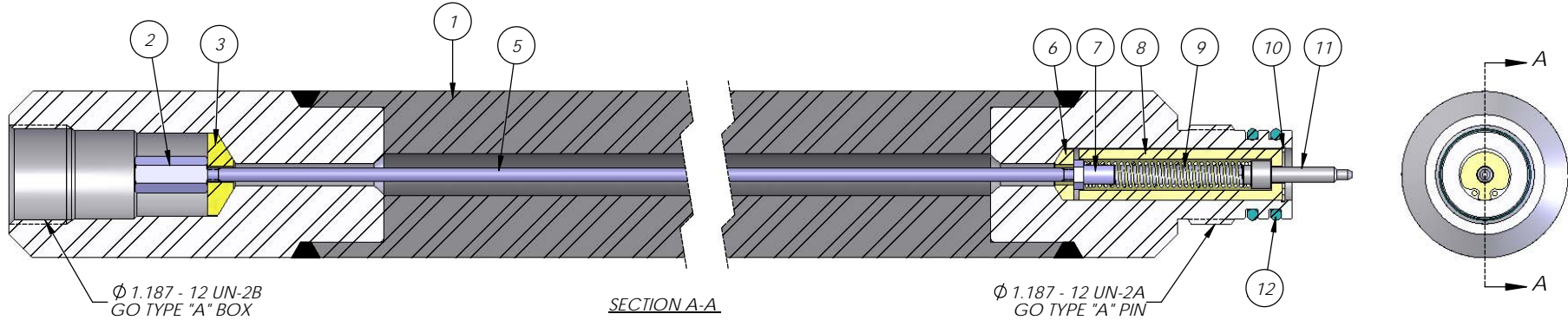


REVISIONS					
REV.	DESCRIPTION	BY	DATE	ECO #	APPROVED
00	REDRAWN IB SOLIDWORKS	DL	1/13/2012		



ITEM NO.	PART NUMBER	DESCRIPTION	QTY.
1	3926-116-003 3926-116-005 3926-116-007	2" SINKER BAR BODY; 3 FT. 2" SINKER BAR BODY; 5 FT. 2" SINKER BAR BODY; 7 FT.	1
2	3924-000-003	CONTACT SOCKET	1
3	0255-000-003	INSULATING WASHER	1
4	3924-002-000 3924-002-003 3924-002-005 3924-002-007	CONACT KIT - LESS ROD CONACT KIT - 3 FT. CONACT KIT - 5 FT. CONACT KIT - 7 FT.	
5	3924-003-003 3924-003-005 3924-003-007	CONACT ROD - 3 FT. CONACT ROD - 5 FT. CONACT ROD - 7 FT.	1
6	3903-000-007	INSULATING WASHER	1
7	3924-000-006	CONTACT NUT	1
8	3903-000-011	PLUNGER INSULATOR	1
9	3903-000-009	CONTACT SPRING	1
10	3903-000-012	SNAP RING	1
11	3903-000-010	CONTACT PLUNGER	1
12	0111-211-V95	O-RING	2

BODY MATERIAL - 1026 DOM STEEL TUBE  
AND 4140 H.T. ALLOY STEEL ENDS

TEMPERATURE RATING - 400°F

PRESSURE RATING - 20,000 PSI

MAX. TENSION - 63,000 LBS.

WEIGHT -  
3 FT. - 30 LBS.  
5 FT. - 50 LBS.  
7 FT. - 70 LBS.

DIAMETER - 2"

OVERALL LENGTH -  
3 FT. - 37.38  
5 FT. - 61.38  
7 FT. - 85.38

INTERNAL MATERIAL MAKE-UP;  
CONTACTS - STAINLESS STEEL  
INSULATORS - PEEK 30% GLASS FILLED  
O-RINGS - VITON 95 DUROMETER

	UNLESS OTHERWISE SPECIFIED:	NAME	DATE	TITLE:
	DIMENSIONS ARE IN INCHES TOLERANCES: ANGULAR: MACHINE ± 1/4° ONE PLACE DECIMAL: ± .050 TWO PLACE DECIMAL: ± .015 THREE PLACE DECIMAL: ± .005 FOUR PLACE DECIMAL: ± .0005 COAXIAL DIAMETERS CONCENTRIC: WITHIN .005 MACHINED FINISHES 125 MAX. <b>REMOVE ALL BURRS AND SHARP EDGES MIN. R.010</b>	DRAWN: LANGFORD	01/13/2012	2" SINKER BAR ASSY. ALL STEEL
PROPRIETARY AND CONFIDENTIAL THE INFORMATION CONTAINED IN THIS DRAWING IS CONFIDENTIAL AND IS THE SOLE PROPERTY OF HUNTING ENERGY SERVICES. ANY DISCLOSURE OR REPRODUCTION IN PART OR AS A WHOLE WITHOUT THE WRITTEN PERMISSION OF HUNTING ENERGY SERVICES IS PROHIBITED. © Copyright 2011, Hunting Energy Services. All rights reserved.	COMMENTS: <b>MATERIAL TRACEABILITY REQUIRED</b>	MATERIAL: Material <not specified>		SIZE: <b>C</b> DWG. NO.: 3926-016-00L REV: 00
DO NOT SCALE DRAWING	FINISH:   HEAT TREAT:	SCALE: NONE	WEIGHT: 29.74 LBS.	SHEET 1 OF 1