

# Site Visit Report

By Ikram Muslim

# General Platform System

## Overview on Offshore System

- Centralized by the Mother Platform, which is where:
  - Living Quarters (LQ) is located
  - Managed by the;
    - Offshore Installation Manager (OIM) – PTW approvals, MOC approvals
    - Well Site Supervisor (WSS) –
    - Production Supervisor (PS) – Reports directly to OIM, Supervisor for Production on Wells
    - Maintenance Supervisor (MS) – Reports directly to OIM, Supervisor for Platform constructions, mechanical system etc.
    - Materials Coordinator (MATCO) – Responsible for Materials on Platform, every offload or backload is informed to or by MATCO.
    - Radio Operator (RO) – Contacts with Boat's Captain, any Satellite Platform's request, weather information, any boat movements, etc.
    - Medic – First person to report to when arrive to Platform. Responsible for bedding etc.
    - HSE – Manage the safety of facilities and conduct morning meetings.

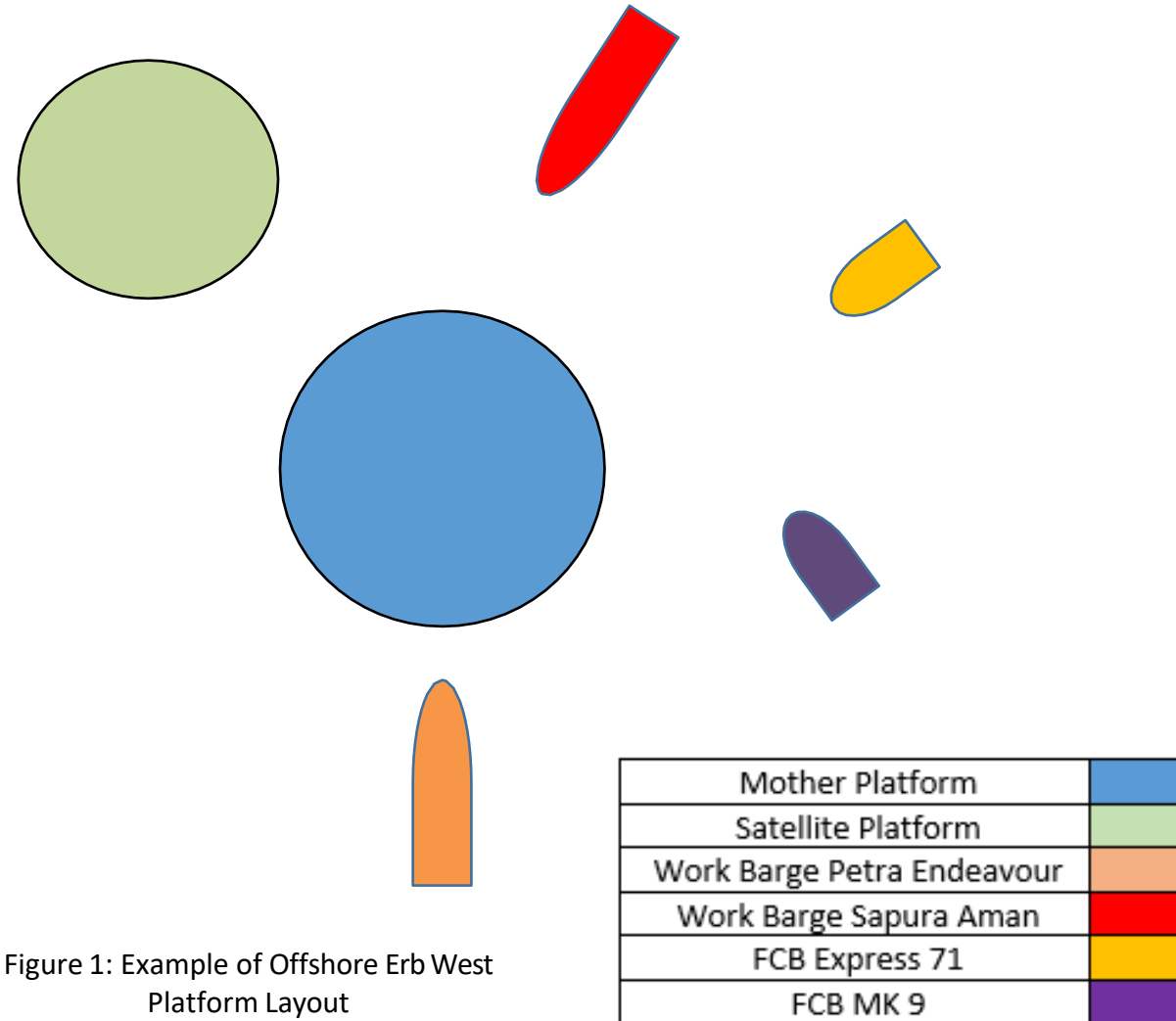


Figure 1: Example of Offshore Erb West Platform Layout

# General Platform System

## Platform Layout – Erb West Mother Platform



Figure 3: Erb West Alpha Platform

*Note: The mother platform of EWQ-A has 4 levels in the LQ. The medic, RO, OIM, MATCO rooms is located at Level 1.*

# General Platform System

## Platform Layout – Personnel Transfer

**GANGWAY**



Figure 5: Location of Personnel Transfer for interrig/mob from work barge

# General Platform System

## Rules on Mother Platform

- Stop Work is permitted to ALL Personnel
- Any Works to be done need to have PTW prior to operation
- UAUC is a must to every personnel with one for each day
- PPE is MANDATORY – Helmet, Ear muffs, Safety Glasses, Gloves, Coveralls, and Safety Boots
- Phones/Laptops are not PERMITTED outside LQ areas.

Time	Task	Remarks
06:30	Morning Meeting	1. Interrig (optional) 2. Morning Shift Starts
07:30	Operation Starts	
12:30	Lunch Hour	
16:30	Tea Break	
18:30	Dinner / Night Shift	1. Night Shift Starts
21:30	Supper	
06:30	End of Night Shift	

Figure 6: Timetable on Mother Platform

# Well Intervention Team

## Typical ELINE Jobs Crew

- Supervised by the Company Man/Company Service Rep. (CSR)/Well Intervention Supervisor (WIS) / Wellsite Supervisor (WSS).
  - Representative from Client's team to supervise Job to be performed.
  - Responsible for Equipment and Personnel from Well Intervention Team.
  - Any signatures or Job Witness on site will be on the WIS responsible.
  - Mobilization and Demobilization of Well Intervention Team.
- Slickline Crews.
  - Being mobbed by a team of 3; Operator, 2<sup>nd</sup> Man, and 3<sup>rd</sup> Man.
  - Slickline Mandatory operations includes:
    - Flapper Probe – To confirm TRSSSV in open condition
    - Tubing Clearance – Usually runs with Gauge Ring to clear tubing pathway/detect fluid level
    - Tag TD – To confirm possible lowest depth prior to Jobs
  - Responsible for:
    - Operator – The person who decides SL BHA, winch driver, and PCE stack ups planning.
    - 2<sup>nd</sup> Man – Assist operator with PCE/BHA Rig ups, may back to back with Operator with Winch Control
    - 3<sup>rd</sup> Man – Assist crew with PTW applications, JHA writeups
- ELINE Crew.
  - Being mobbed by a team of 4; Engineer, Crew Chief, 2<sup>nd</sup> Man, and 3<sup>rd</sup> Man.
  - Responsible for:
    - Engineers – Team Leader who communicates with clients rep, town. Job overall planning, etc.
    - Crew Chief – Assist Engineer with Equipment and PCE and/or Winch Control
    - 2<sup>nd</sup> man/3<sup>rd</sup> man – Assist the team with rig up and equipment setup and/or operates

# Well Intervention Team

## Job Site – Overview on Main Deck

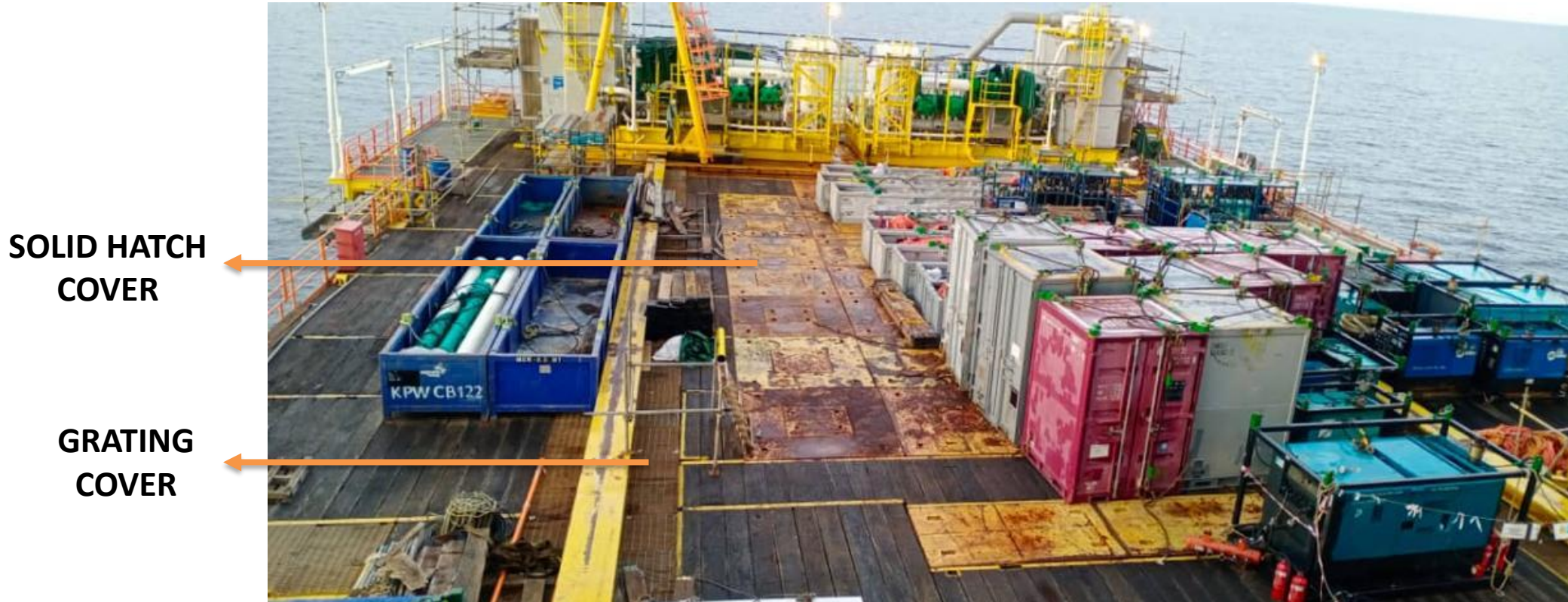


Figure 7: Example of Site Key points

# Well Intervention Team

## Job Site – Overview of Crane



Figure 8: Crane Configurations

# Well Intervention Team

Job Site – Overview on Wells and Xmas Tree

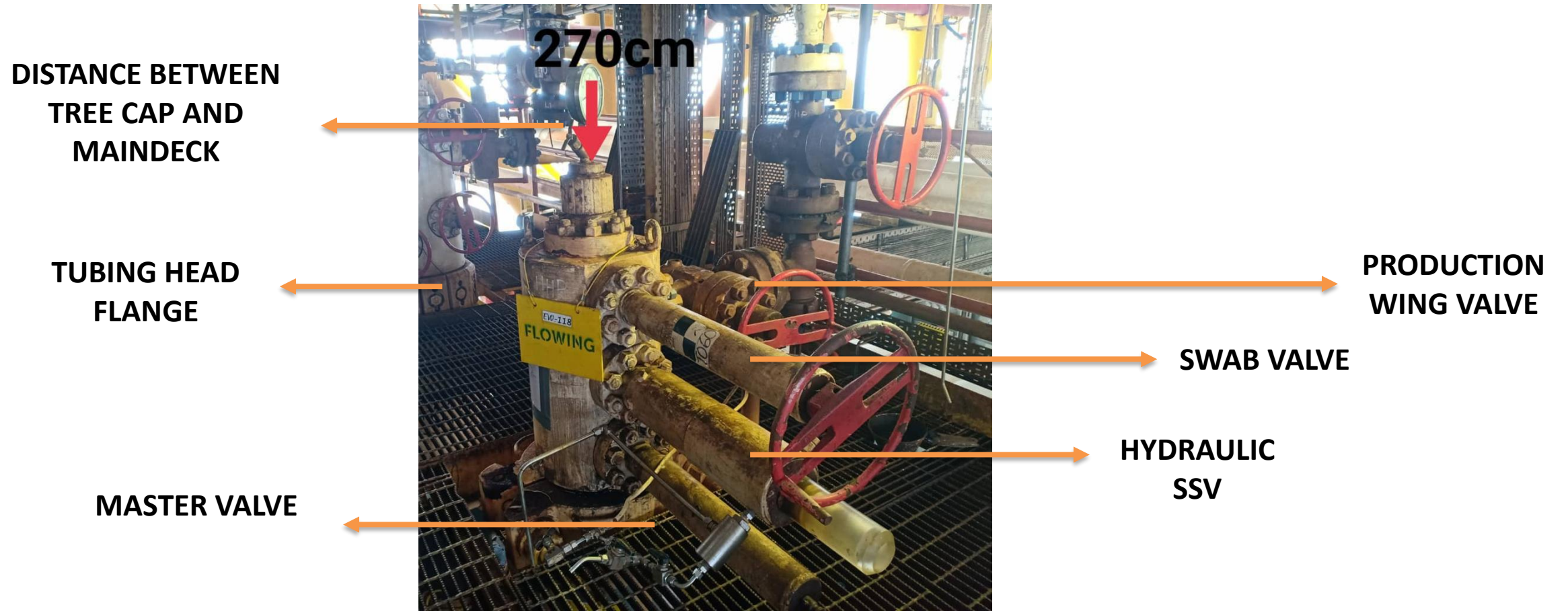


Figure 9: Wellhead/Xmas Tree configurations



# Thank you !

Questions and Answering Session

Prepared by,



---

Name : Muhammad Ikram Muslim

Designation : Junior Field Engineer

Date : 24 November 2022

Verified by,

---

Name : Faris M. Firdaus

Designation : Field Service Manager

Date :

Verified by,

---

Name : Azahari Suhari

Designation : Operation Manager

Date :