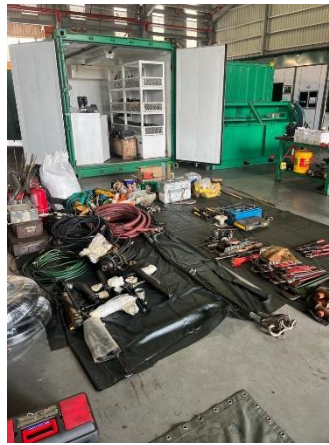


30 July 2023 to 3 August 2023(Aiman Haikal)

-Process preparing package for down hole tool department

1. Law down all the consumables and equipment needs from the tool house.



2. Cleaning all the dirty and rusty down hole tools.



3. Cleaning the tool house and put all the consumables that already being doing inventory checking inside the tool house.



- *For the down hole tools, we still don't put it inside the tool house because we need to do an acceptance for it.*

-Assist Toolman for doing the fit test on 4.5-inch insert valve at Halliburton by using Pulling Tool and Running Tool.

1. X-line Running Tool

-We use the X-line to make sure the lock mandrel key works.

- X-line
  - To set the key of lock mandrel at plug.



X-line

2. GS and GR Pulling Tool

-We use GS and GR for pulling the out the plug.

- GS
  - Jar down to shear
- GR
  - Put the GU adapter at GS to make it GR
  - Jar up to shear



GS




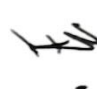


GR(GS + GU adapter)

# DIMENSION BID

## Slickline Assistant Onshore On-the-Job Training Record

Trainee's Name:	AIMAN UMMAL BIN ABDUL HAMM	Job Title:	TSA
Month:	July - August	Training Period:	

No.	Main Tasks (please describe)	Training Date	Training Time		Total Hours	PR*	Signature	
			From	To			Trainee	Instructor
1	<ul style="list-style-type: none"> <li>- laydown consumables and operation need</li> <li>- cleaning the down hole tool from PANGE CXX01</li> </ul>	30/7/2023	09:00	17:00				
2	<ul style="list-style-type: none"> <li>- Continue cleaning down hole tool</li> <li>- Doing inventory checking on <del>down</del> consumables for PANGE CXX01</li> </ul>	31/7/2023	08:00	17:00				
3	<ul style="list-style-type: none"> <li>- Put back all the consumables into the tool house for PANGE CXX2</li> <li>- Cleaning up the tool house</li> </ul>	1/8/2023	08:00	17:00			