

PLATFORM SITE VISIT



CLIENT : PCSB SKA
FIELD : BAYAN
PLATFORM : BAYAN-B
WELL(S) : BY-211
INSPECTED BY : FLETCHER / HAFIZAN
DATE OF INSPECTION : : 5th MAY 2025
REMARK :

TABLE OF CONTENTS

PLATFORM DETAILS

WELL DETAILS

UTILITIES ONBOARD PLATFORM

SECTION A1

TOP DECK/MAIN DECK DIMENSION

WIDE, OVERALL : 38 ft

LENGTH, OVERALL : 100 ft

NO OF LEVELS : 3

NO OF ESCAPE POINT : 2

NO OF LIFE RAFT/LIFE BOAT : 2

LEVELS CONFIGURATION (FROM TOP) :	MAIN DECK	<input checked="" type="checkbox"/>
	UPPER MEZZADINE DECK	<input type="checkbox"/>
	LOWER MEZZADINE DECK	<input checked="" type="checkbox"/>
	CELLAR DECK	<input checked="" type="checkbox"/>
	SEA DECK/SUMP PUMP DECK	<input type="checkbox"/>

HEIGHT FROM SEA LEVEL TO MAIN DECK :

HEIGHT FROM SEA LEVEL TO LOWEST DECK :

WIDE, USEABLE FOR E-LINE OPS ONLY : 38 ft

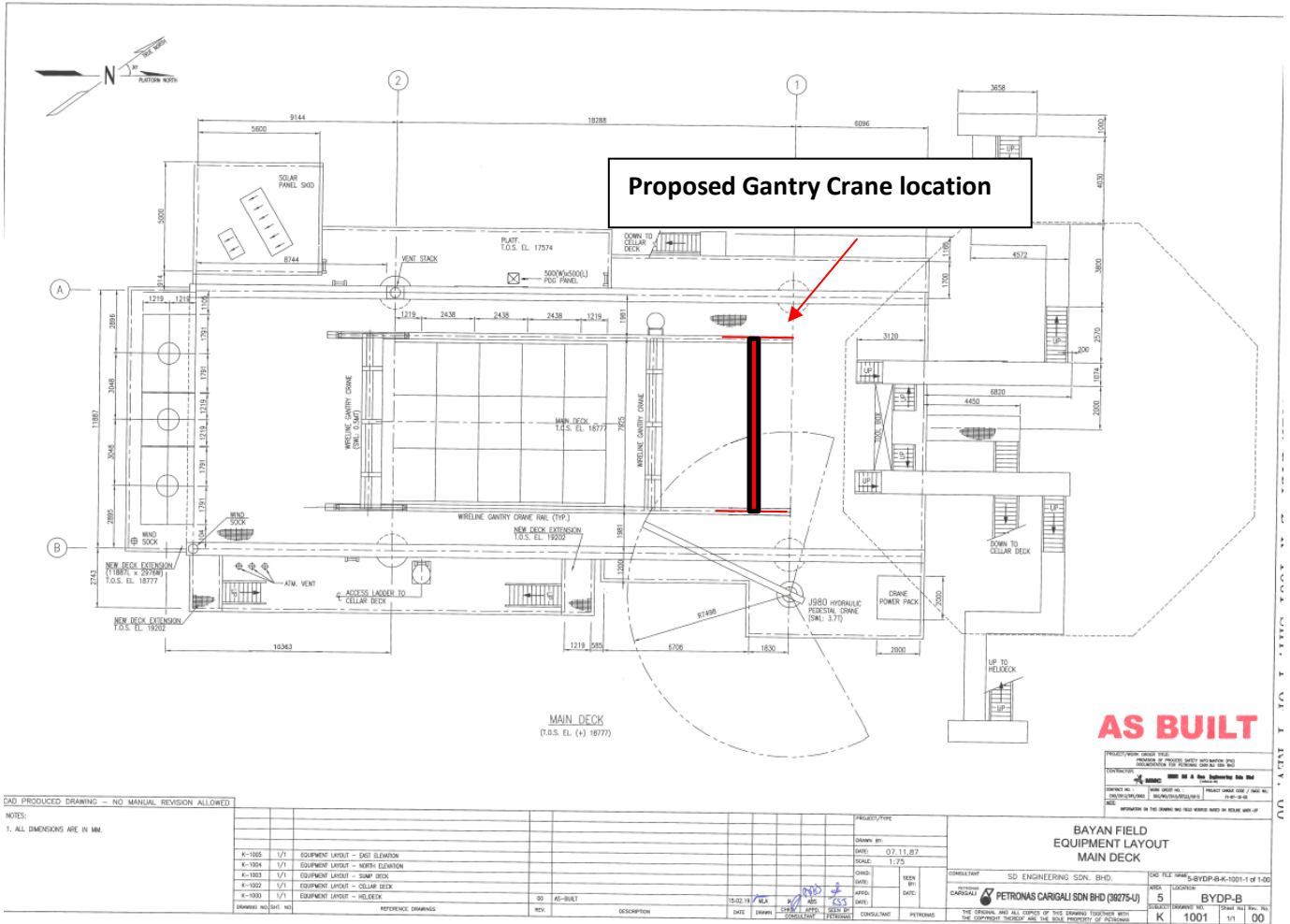
LENGTH, USEABLE FOR E-LINE OPS ONLY : 100 ft

Usable Area for Multiline Operation



PLATFORM LAYOUT

*Highlighted in red is the gantry ideal position to maximise Multiline operation.

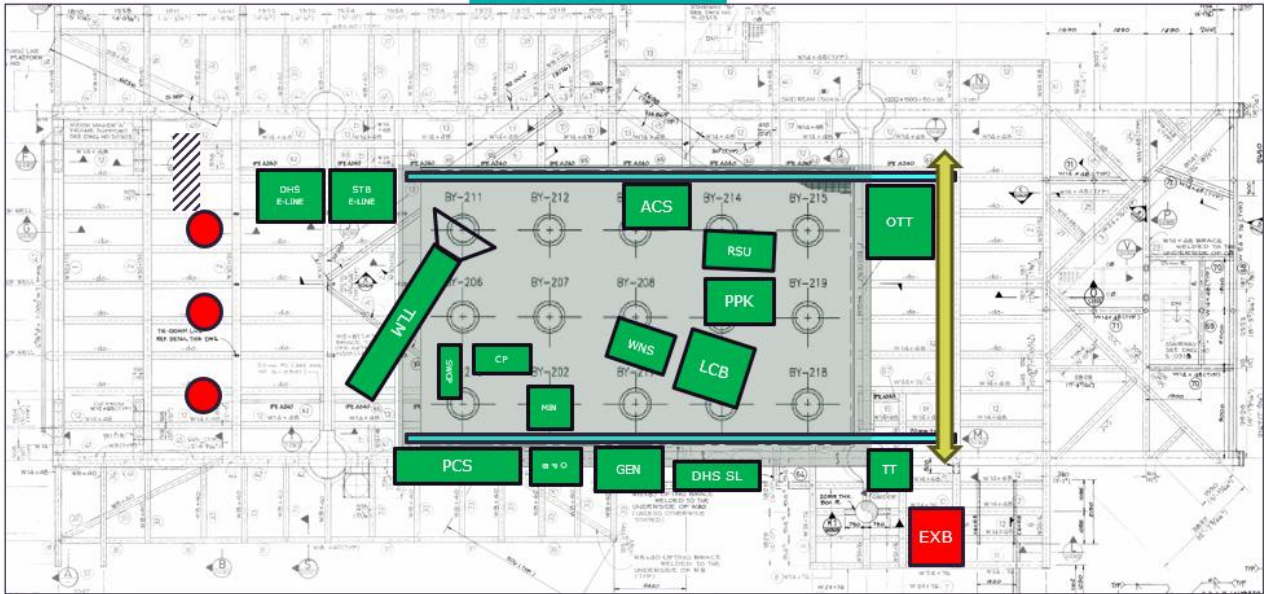


Proposed Equipment layout

*Equipment layout

BYDP-B DB Multiline Equipment Layout

Well 211



- Gantry Crane
- Extended well
- Crane
- Multiline Package

HAZ Zone 2
© 2017 Petroliam Nasional Berhad (PETRONAS)

SECTION A2 CRANE AND HOISTING EQUIPMENTS

NUMBER OF CRANE ONBOARD : 1 EA

CRANE DETAILS

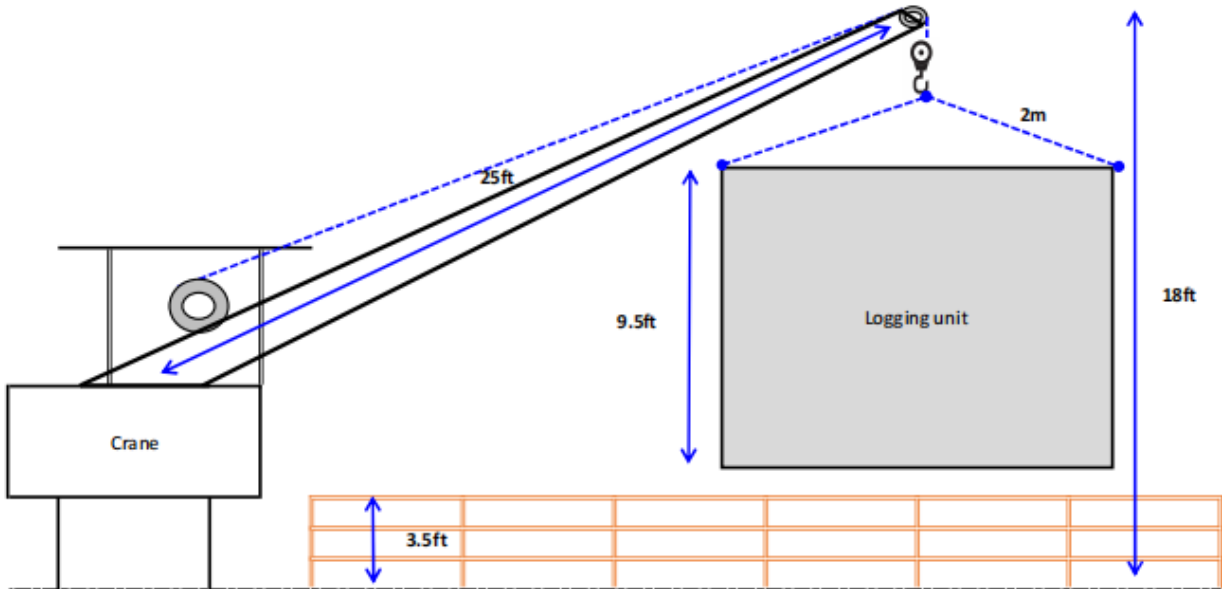
TYPE OF CRANE	MAIN HOIST CAPACITY (mT)	FLY/AUX BLOCK CAPACITY (mT)	MAIN HOIST REACH LENGTH (ft)	FLY/AUX REACH LENGTH (M)
MAIN CRANE	3.7	3.7	25ft @ 0°	-
AUXILIARY CRANE	-	-	-	-
OTHER CRANE	-	-	-	-

Picture of crane





ITEM		DIMENSION						OWNER
		LENGTH M	WIDTH M	HEIGHT (m) A	WEIGHT (MT)	SLING HEIGHT (M) B	A + B (M)	
LCB	ASEP LOGGING UNIT	2	2.1	2.9	1.5	2.4	5.3	DIMENSION BID
WNS	ASEP CABLE WINCH	1.9	1.4	1.5	2.8	1.9	3.2	
DHS E-LINE	6 FT MINI CONTAINER	1.6	1.9	2.9	2.8	4.3	7.2	
STB ELINE	6 FT MINI CONTAINER	1.6	1.9	2.9	2.8	4.3	7.2	
OTT	10 FT HALF BASKET	2.991	2.438	1.5	1.4	1.9	3.4	
OPB	2.5MTR OPEN BASKET	2.5	1.220	1.4	0.8	1.9	3.3	
PCS	PCE 10K ED9 3.00"	3.5	1.3	1.8	3.6	2.9	4.7	MULTILINE
PPK	ASEP POWER PACK	2.2	1.4	1.7	2.5	3	4.7	
TLM	TELESCOPIC MAST SKID	6.1	1.4	1.4	2.3	2.6	4	
MIN	MAST INTENSIFIER	1.1	0.9	0.9	0.6	1.7	2.6	
TOT	TOTE TANK	1.5	1.2	2.3	0.6		2.3	
ACS	AIR COMPRESSOR	2.2	1.2	1.5	2.3	1.7	3.2	
GEN	GENSET	2.2	1.4	1.8	2.1	2.5	4.3	
RSU	SlickLine flyline	9.5	1.35	1.46				SLICKLINE
DHS SL	TOOLS HOUSE SL	1.6	1.9	2.9	2.8	4.3	7.2	



SECTION B WELL DETAILS (BY-211S1)

TOTAL SLOTS ON PLATFORM : 18

TOTAL SLOTS USED : 18

EMPTY SLOTS : 0

PRIORITY WELLS :

INTERVENTION HATCH COVER EXIST? : YES NO

TYPE OF COVER ON TOP OF WELLS : GRATING PLATE (REMOVEABLE)
 PLATE (NON REMOVEABLE)
 OTHERS (PLEASE SPECIFY)

OBSTRUCTION AROUND WELL AREA : YES (PLEASE SPECIFY) NO

WELL TYPE : OIL PRODUCER GAS PRODUCER
 INJECTOR WELL
 OTHER (PLEASE SPECIFY)

TUBING SIZE : 2³/₈" 2⁷/₈" 3¹/₂"
 4¹/₂" 5¹/₂"

X-MAS TREE RATING : 3K PSI 5K PSI 10K PSI 20K PSI

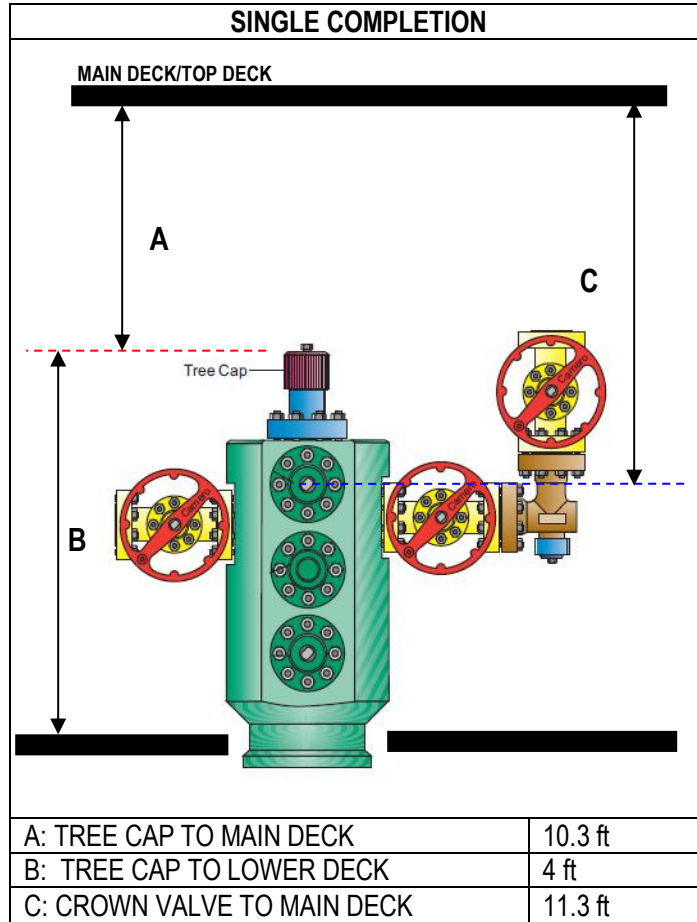
X-MAS TREE CONNECTION TYPE : BOWEN OTIS ELMAR
 SOLAR ALERT

X-MAS TREE CONFIGURATION : SINGLE STRING
 DUAL STRING
 CONDUCTOR SHARE WELLHEAD (CSW)/SPLITTER
 >2 STRING (MULTIPLE STRING)

X-MAS TREE CONNECTION SIZE : 5" OTIS Thread Size for 3-1/2" Tubing



X-MAS TREE SKETCH



Well	Tree Cap to Main Deck	Tree Cap to Lower Deck	Crown Valve to Main Deck
BY-211	10.3 ft	4 ft	11.3 ft

Fig: X-mas tree well By-211, X-mas tree cap.

SECTION C UTILITIES ONBOARD PLATFORM
DIESEL SUPPLY

SUPPLY TYPE : HOSE JERRY CAN VALVE TAP CAM LOCK

DIESEL TYPE : N/A

CONNECTION TYPE : N/A

HOSE LENGTH : N/A

WATER SUPPLY

SUPPLY TYPE : HOSE TOTE TANK JERRY CAN TAP
 VALVE ¼" FITTING ½" FITTING
 CAM LOCK

WATER TYPE : FRESH WATER SEA WATER TREATED SEA WATER

CONNECTION TYPE : N/A

HOSE LENGTH : N/A

ELECTRICAL POWER SUPPLY

SUPPLY TYPE : AC DC

VOLTAGE : 110V 240/220V 415V 440V

PHASING : SINGLE PHASE 3-PHASE

MAX CURRENT : 1A 5A 10A 12/15A 20A

CONNECTION TYPE : FLYING LEADS ZONE 2 CONNECTOR (PLS SPECIFY TYPE)
 TAPPED FROM DISTRIBUTION PANEL

CABLE LENGTH : N/A

COMPRESSED AIR SUPPLY

SUPPLIED PRESSURE : 80-110 PSIA 100-150 PSIA > 150 PSIA
 SUPPLIED CFM : 20-50 50-100 100-200
 DRIED AIR? : YES NO
 CONNECTOR TYPE : 1" CHICAGO 2" CHICAGO 3/4" NPT
 1" NPT 1/2" FITTING 3/4" FITTING
 1" FITTING VALVE
 HOSE LENGTH : N/A

Additional Picture for Reference:



Fig: Liferaft 25pax, lifebouy & escape ladder at cellar deck.



Fig: Life jacket box at cellar deck.



Fig: Fire extinguisher box at cellar deck.



HIGHLIGHT/NOTES FOR THE OPERATION

- Require additional lighting due to working Area are very dark at night time
- OIM will stop operation if insufficient lighting in place