

# Site Visit Report

By Clement Emang

# General Platform System

Platform Layout – Tembungo Bravo (satellite platform)



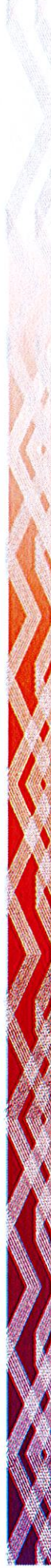
**MAIN DECK**

**SEA DECK**

**CELLAR DECK**

Figure 3: Tembungo Bravo Platform

*Note: TBG-B is a satellite platform.*



# General Platform System

Platform Layout – Personnel Transfer

**BOAT  
LANDING**

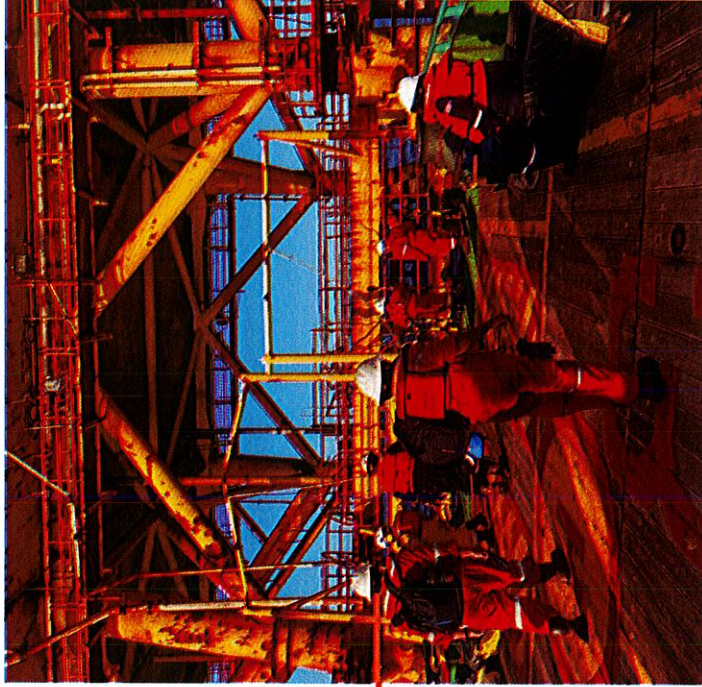


Figure 5: Location of Personnel Transfer for mob/demob from Platform/Standby Boat



# General Platform System

## Rules on Mother Platform

- Stop Work is permitted to ALL Personnel
- Any Works to be done need to have PTW prior to operation
- UAUC is a must to every personnel with one for each day
- PPE is MANDATORY – Helmet, Ear muffs, Safety Glasses, Gloves, Coveralls, and Safety Boots
- Phones/Laptops are not PERMITTED outside LQ areas.

Time	Task	Remarks
06:30	Morning Meeting	1. Interrig (optional) 2. Morning Shift Starts
07:30	Operation Starts	
12:30	Lunch Hour	
16:30	Tea Break	
18:30	Dinner / Night Shift	1. Night Shift Starts
21:30	Supper	
06:30	End of Night Shift	

Figure 6: Timetable on Platform



# Well Intervention Team

## Typical EMITE Jobs Crew

- Supervised by the Company Man/Company Service Rep. (CSR)/Well Intervention Supervisor (WIS) / Wellsite Supervisor (WSS).
  - Representative from Client's team to supervise Job to be performed.
  - Responsible for Equipment and Personnel from Well Intervention Team.
  - Any signatures or Job Witness on site will be on the WIS responsible.
  - Mobilization and Demobilization of Well Intervention Team.
- Slickline Crews. (DELEUM/DIMENSION BID/GEOWELL)
  - Being mobbed by a team of 3; Operator, 2<sup>nd</sup> Man, and 3<sup>rd</sup> Man.
  - Slickline Mandatory operations includes:
    - Flapper Probe – To confirm TRSSV in open condition
    - Tubing Clearance – Usually runs with Gauge Ring to clear tubing pathway/detect fluid level
    - Tag TD – To confirm possible lowest depth prior to Jobs
  - Responsible for:
    - Operator – The person who decides SL BHA, winch driver, and PCE stack ups planning.
    - 2<sup>nd</sup> Man – Assist operator with PCE/BHA Rig ups, may back to back with Operator with Winch Control
    - 3<sup>rd</sup> Man – Assist crew with PTW applications, JHA writeups
- EMITE Crew.
  - Being mobbed by 1 or 2 Engineer/Field Specialist.
  - Responsible for:
    - Engineers/Field Specialist – To communicate with WSS, plan and execute the job.



# Well Intervention Team

Job Site – Overview on Main Deck



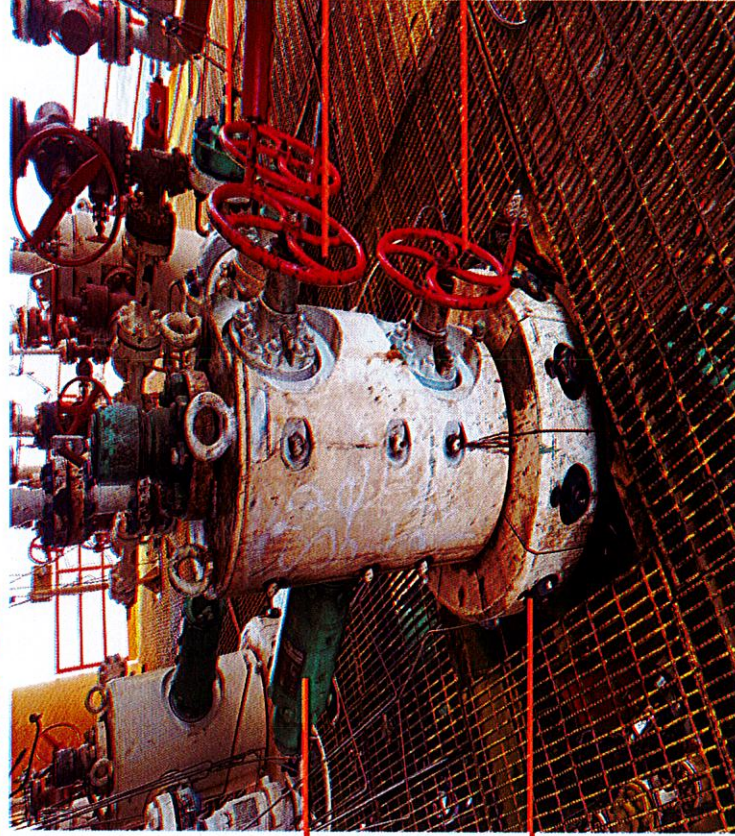
**SOLID HATCH  
COVER**

Figure 7: Example of Site Key points



# Well Intervention Team

Job Site – Overview on Wells and Xmas Tree



HYDRAULIC  
SSV

TUBING HEAD  
FLANGE

PRODUCTION  
WING VALVE

SWAB VALVE

MASTER VALVE

Figure 9: Wellhead/Xmas Tree configurations



# Thank you !

Questions and Answering Session

Prepared by,



---

Name: Clement Emang Yusup Ngau  
Designation: Junior Field Engineer  
Date: 1/1/2024

Verified by,

Verified by,

---

Name : Faris M. Firdaus  
Designation : Field Service Manager  
Date :

---

Name: Mohd Zahir Bin Abdul Manan  
Designation: Operation Manager  
Date:

