

Gain Settings

Tools » NTO » NTO Tool Configuration »

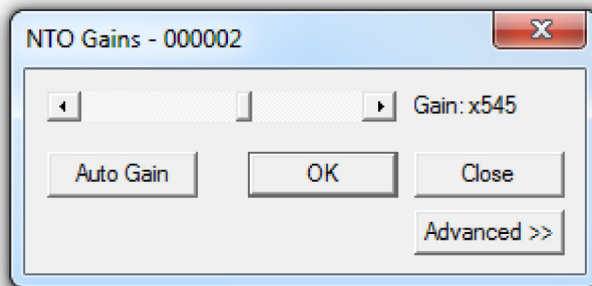


Downhole gain can be applied to the noise signal in the range x13 to x2455 (or 22.4 to 67.8 dB).

Ideally the gain should be set to detect the full audible range under investigation, i.e. the sensor should detect the quietest and loudest noise thresholds without saturation.

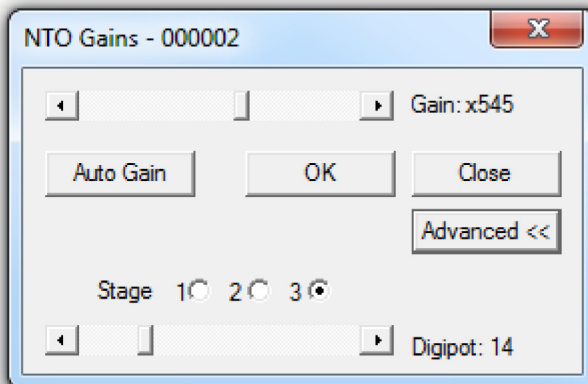
The gain setting is saved to non-volatile memory in the tool electronics and written to the survey table or log when recording.

Note: Auto Gain is a one-shot optimisation, it does not continually adjust the gain for changing environments.



Auto Gain optimises the gain for the current signal and takes several seconds to complete.

Advanced >> allows direct control of the gain by setting to one of three gain stages, and applying a digipot setting to the latter two.



Copyright © 2015 Sondex Wireline Ltd. All Rights Reserved.