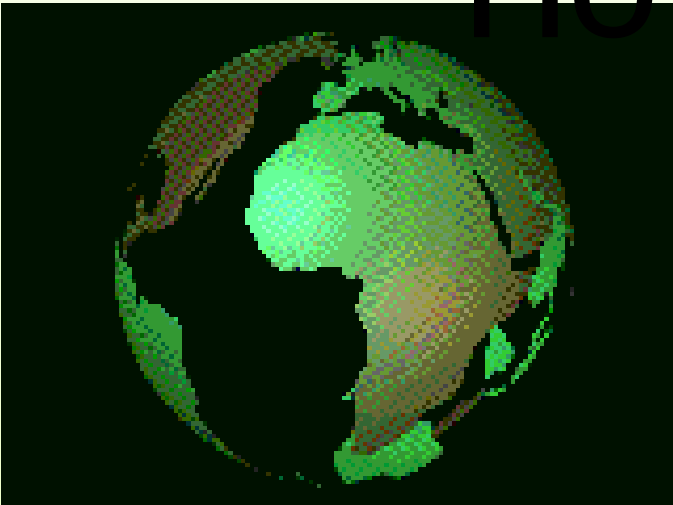


# How to calibrate CWH/FDR

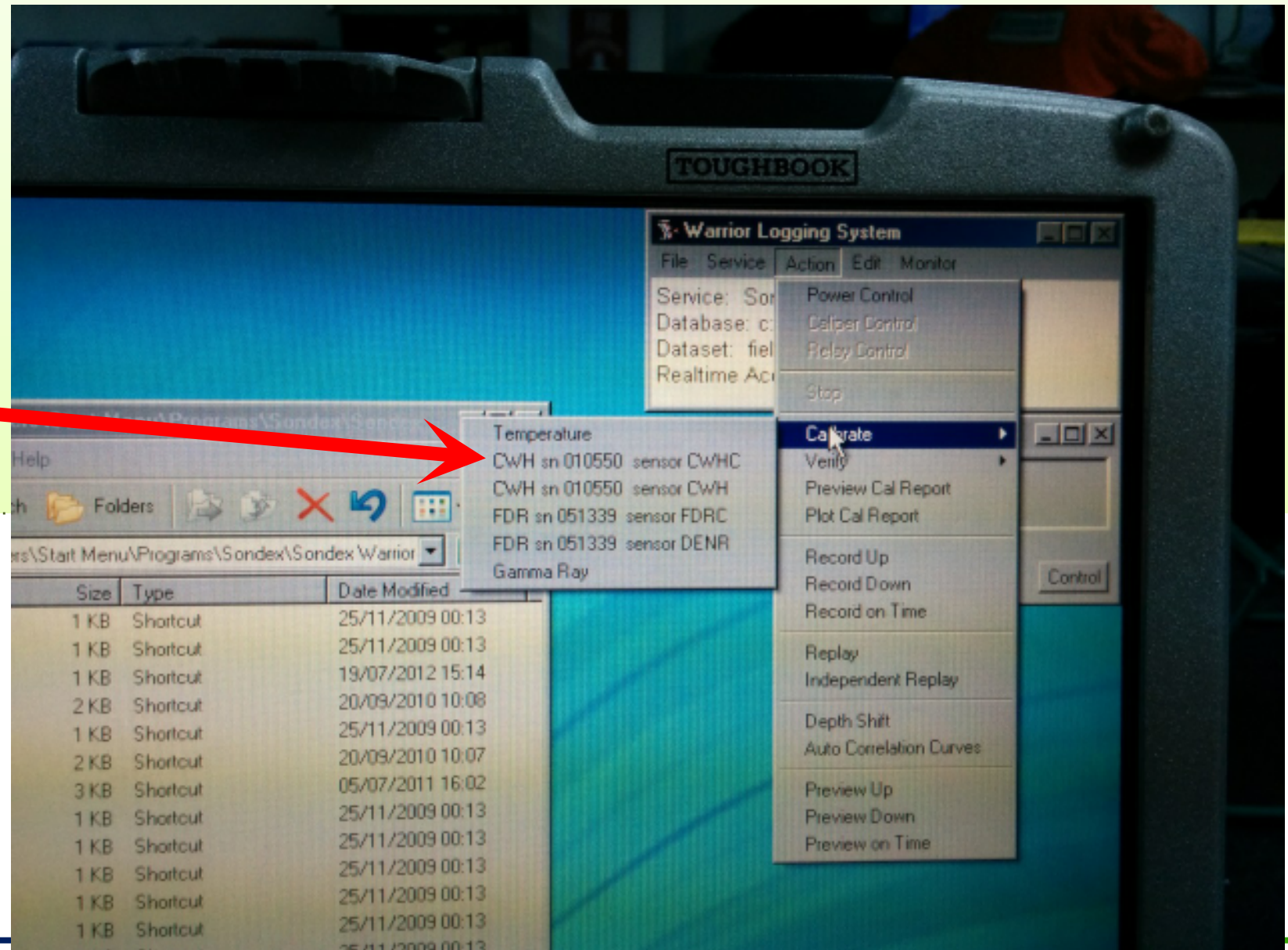
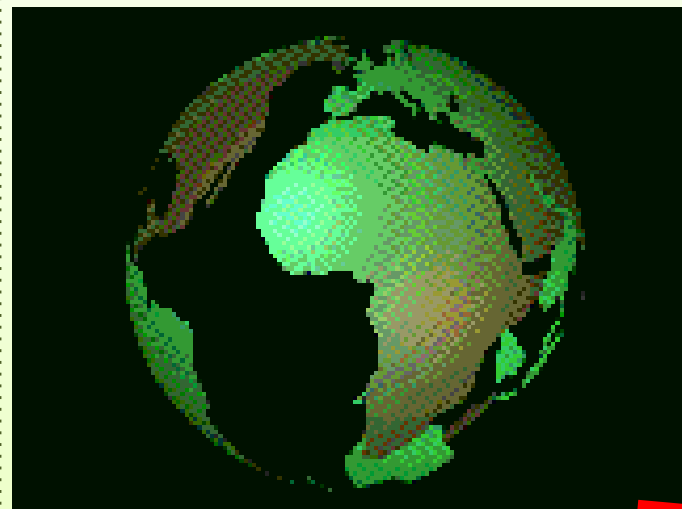


Luqman Norhalim

JFE

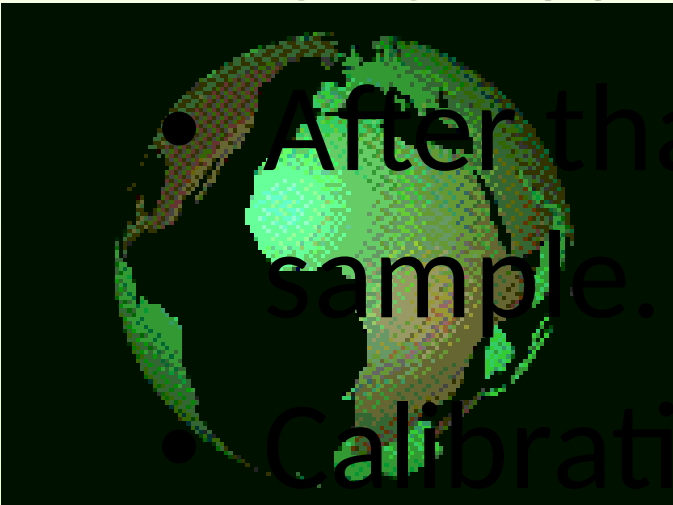
# How to calibrate CWH ?

- Open warrior > Click “Action” > Click Calibrate  
> Click CWH sensor CWH



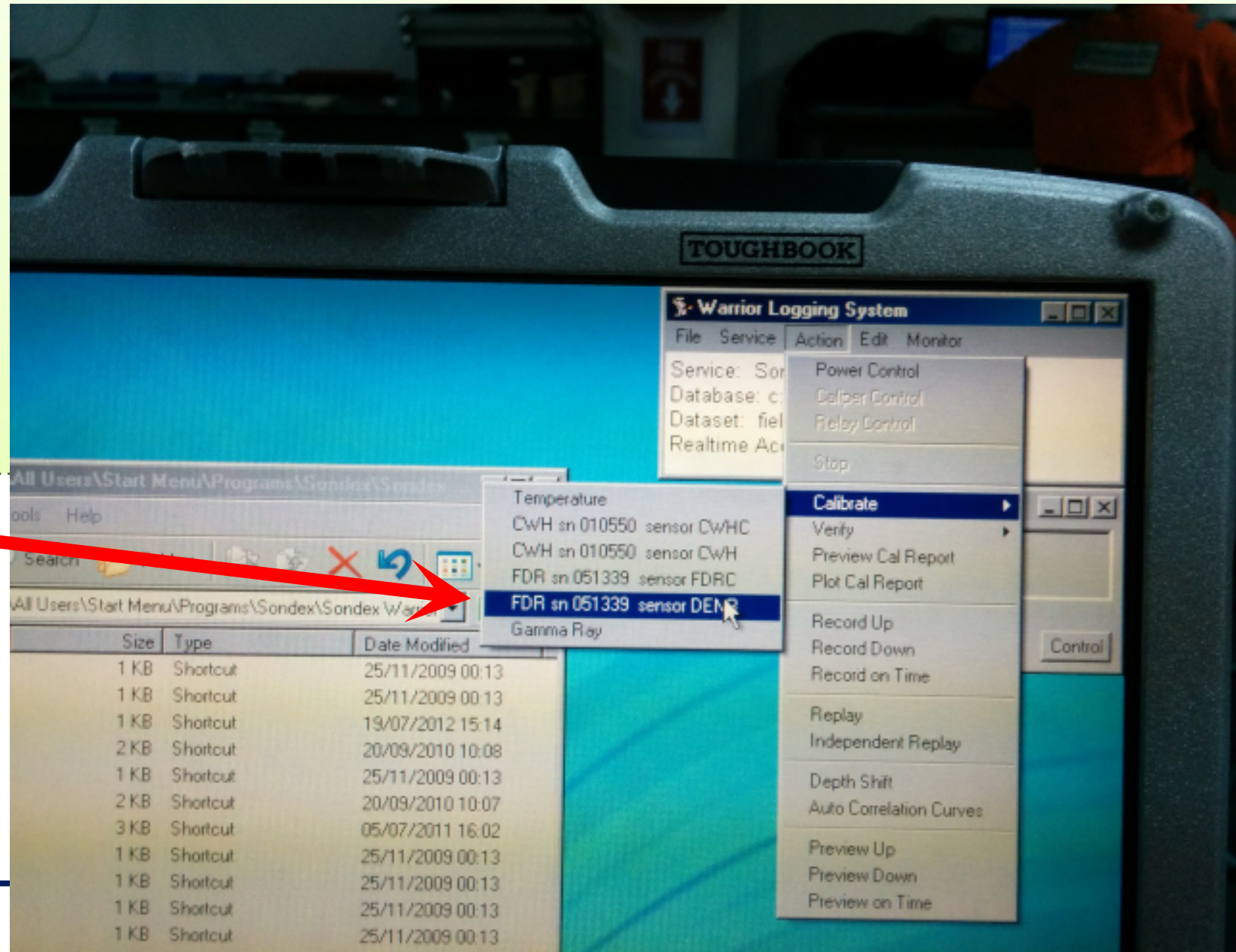
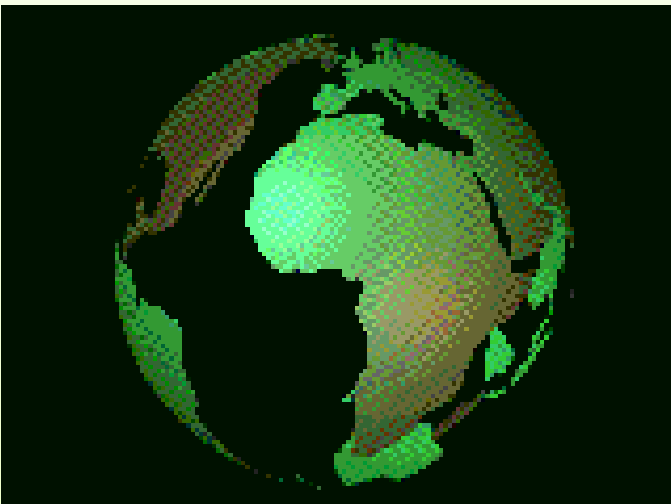
# How to calibrate CWH?

- Reference point for air is 0 and 1 is for water.
- Click sample when the CWH is in Air.
- After that put water inside the CWH and click sample.
- Calibration is done.



# How to calculate FDR?

- Open warrior > Click “Action” > Click “Calibrate” > Click FDR DENR



# How to calibrate FDR?

- To calibrate FDR we need to take into consideration :

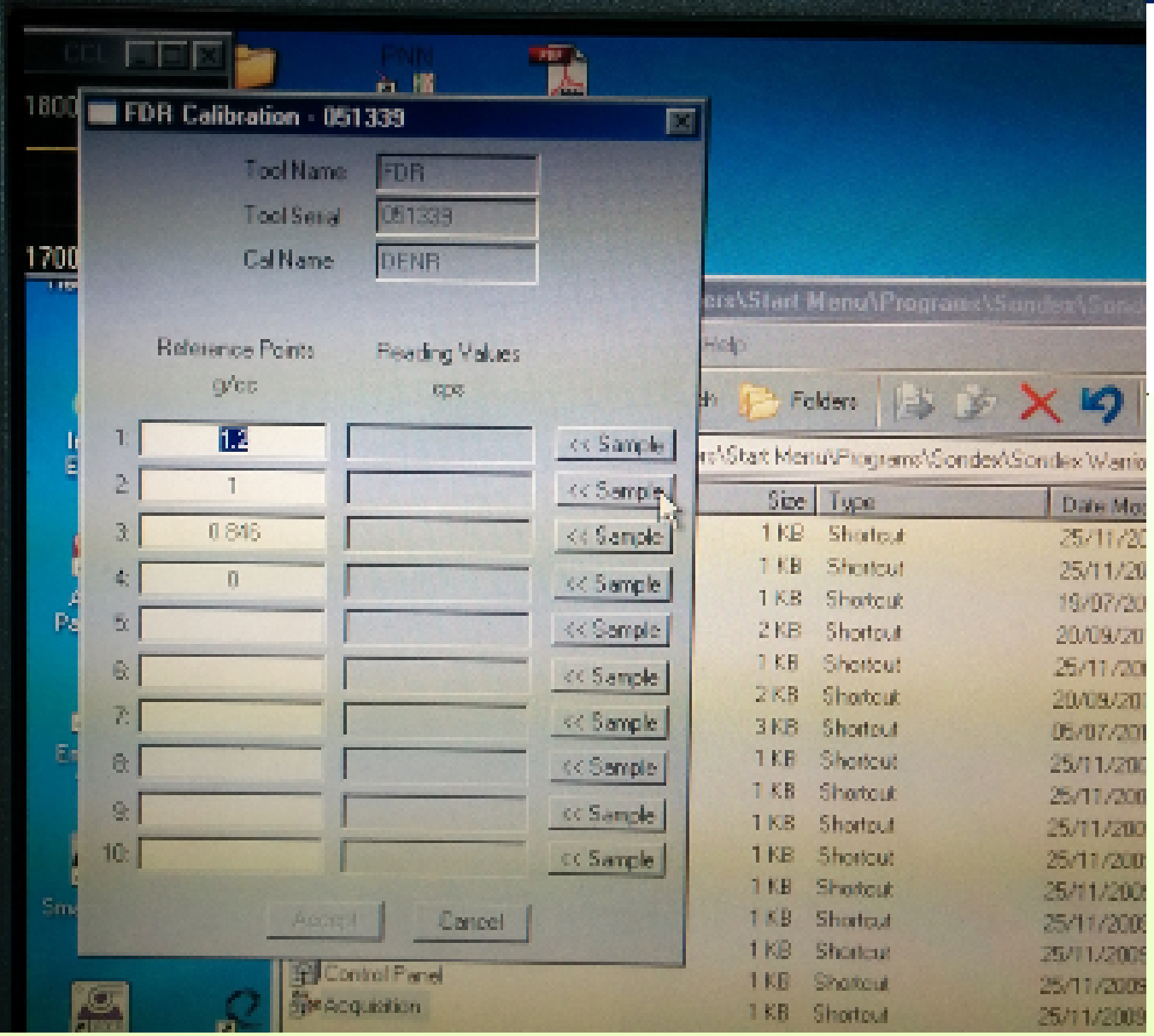
- 
- 0 for air
  - 0.845 for oil
  - 1 for water

- 1.2 for salt water

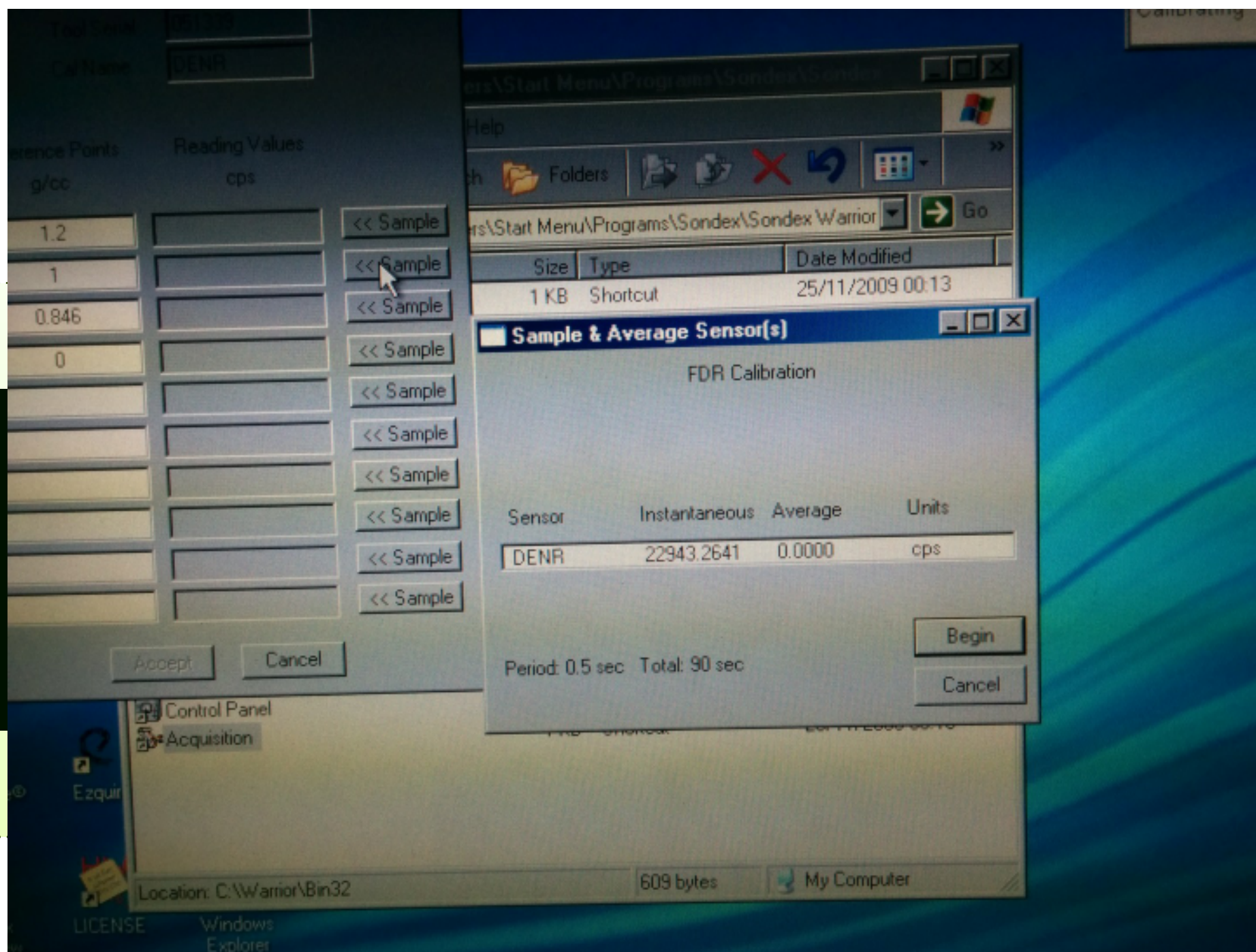


# How to calibrate FDR?

Density	Frequency
0	6.815 * water frequency
0.846	1.432 * water frequency
1.0	Water frequency
2.0	0.447 * water frequency

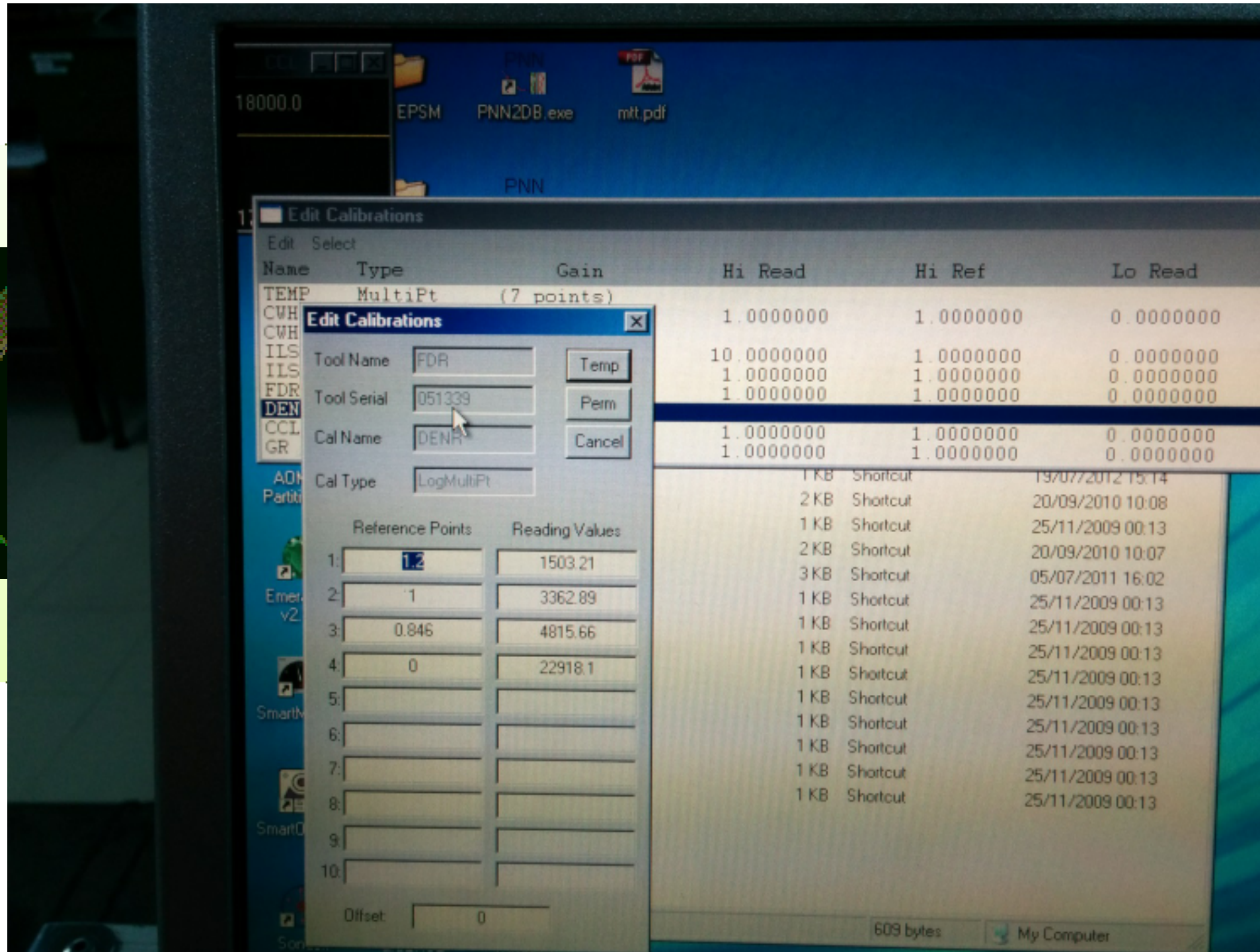


Put water inside the FDR and click sample to get water frequency



Click Begin.

Click DENR and calculate manually for each of the reference point using the formula in the previous slide.





**THANK YOU**

