

22 May 2023 to 26 May 2023 (Muhd Hasnawi Bin Sudarso)

*how much supply pressure from pump hydraulic ?

-system pressure set @2500 psi

*what components that certified in zone 2 include in power pack?

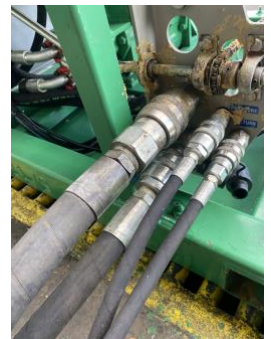
- exhaust gas cooler
- exhaust flame trap
- exhaust rain cap
- inlet air filter
- inlet flame arrestor
- secure disptick
- fuel shut valve
- emergency stop
- non metal blow fan
- anti static fan belt



*what size pin x line from top to bottom

-top ¼ brass pin

-bottom 5/16 brass pin



*what size hose supply and return for power pack?

-supply 1" (5510 psi)

-return 1-1/4" (1815 psi)