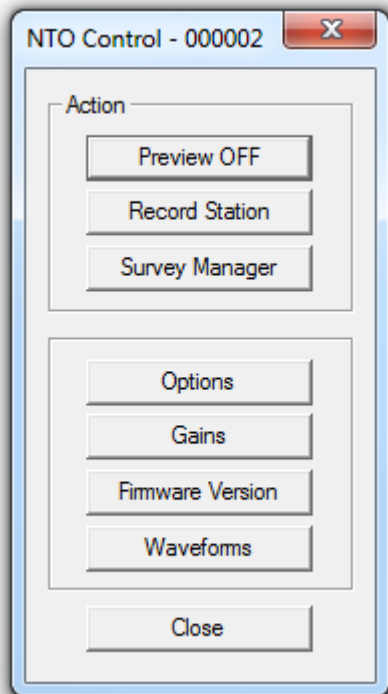


## NTO Tool Configuration

Tools » NTO »



The **NTO Control** window, accessed from **Edit > Tool configuration > NTO**, provides all the control settings for the NTO.



The NTO can be run in a variety of modes; None, Preview, Record Station, Record Continuous. The status is reported in the status bar of the **Amplitude Monitor**.

Preview ON	Switches into Preview mode to observe the signal.
Record Station	Switches into Record Station mode to record the signal to a survey table.
Survey Manager	Opens the survey table to display the stations in a tabulated format.
Options	Various configuration options.
Gains	Gain settings
FW Version	Displays the tool electronic firmware versions.
Waveforms	Displays waveforms reconstructed from the FFT spectrum.

Copyright © 2015 Sondex Wireline Ltd. All Rights Reserved.