

# PLATFORM SITE VISIT



**CLIENT** : PCSB SKA  
**FIELD** : BARONIA  
**PLATFORM** : BARONIA-I  
**WELL(S)** : BN-49L/S  
**INSPECTED BY** : MUHAMMAD DANIAL HAKIM BIN MOHD ZAMRI / MAX SPENSER  
**DATE OF INSPECTION** : 06<sup>th</sup> APRIL 2023  
**REMARK** :

## TABLE OF CONTENTS

PLATFORM DETAILS

WELL DETAILS

UTILITIES ONBOARD PLATFORM

**SECTION A1**

**TOP DECK/MAIN DECK DIMENSION**

WIDE, OVERALL	: 37 ft		
LENGTH, OVERALL	: 108 ft		
NO OF LEVELS	: 2		
NO OF ESCAPE POINT	: 2		
NO OF LIFE RAFT/LIFE BOAT	: 3		
LEVELS CONFIGURATION (FROM TOP)	:	MAIN DECK	<input checked="" type="checkbox"/>
		UPPER MEZZADINE DECK	<input type="checkbox"/>
		LOWER MEZZADINE DECK	<input type="checkbox"/>
		CELLAR DECK	<input checked="" type="checkbox"/>
		SEA DECK/SUMP PUMP DECK	<input type="checkbox"/>
HEIGHT FROM SEA LEVEL TO MAIN DECK	: 65 ft		
HEIGHT FROM SEA LEVEL TO LOWEST DECK	: 40 ft		
WIDE, USEABLE FOR E-LINE OPS ONLY	: 30 ft		
LENGTH, USEABLE FOR E-LINE OPS ONLY	: 50 ft		

### Usable Area for E-line Operation



Fig: Overview of main deck.



Fig: Overview of main deck.

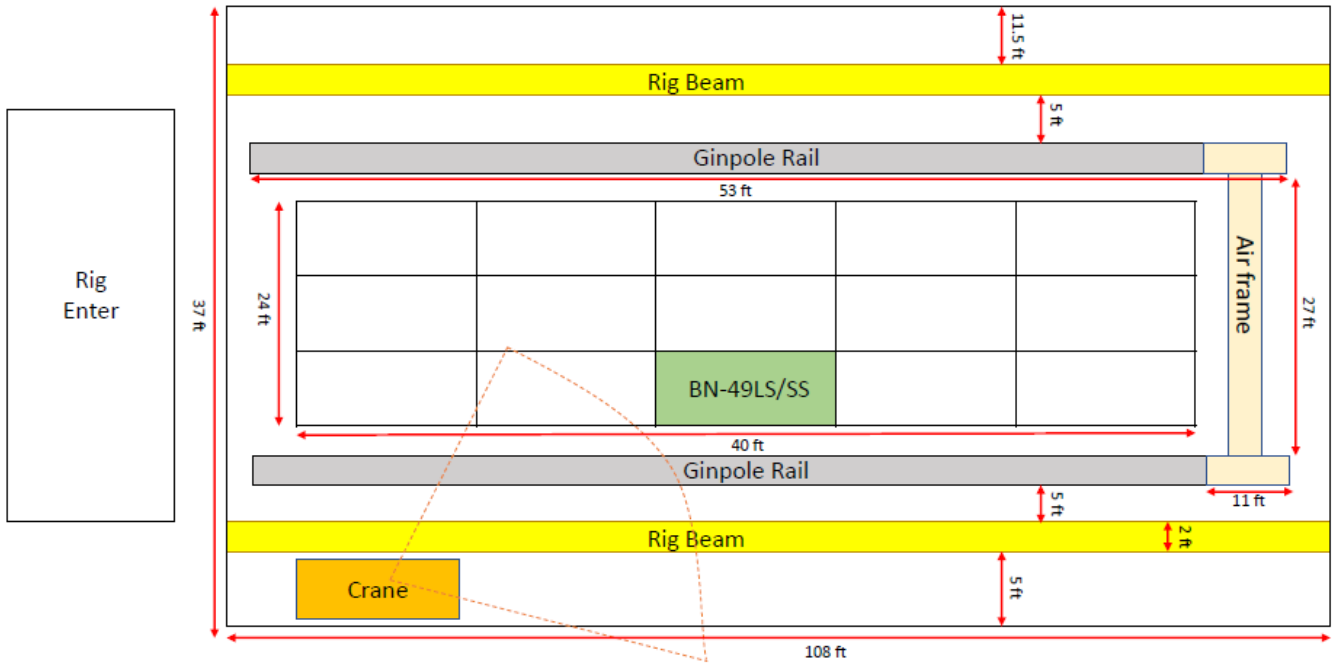


Fig: View from hatch cover to X-mas tree.

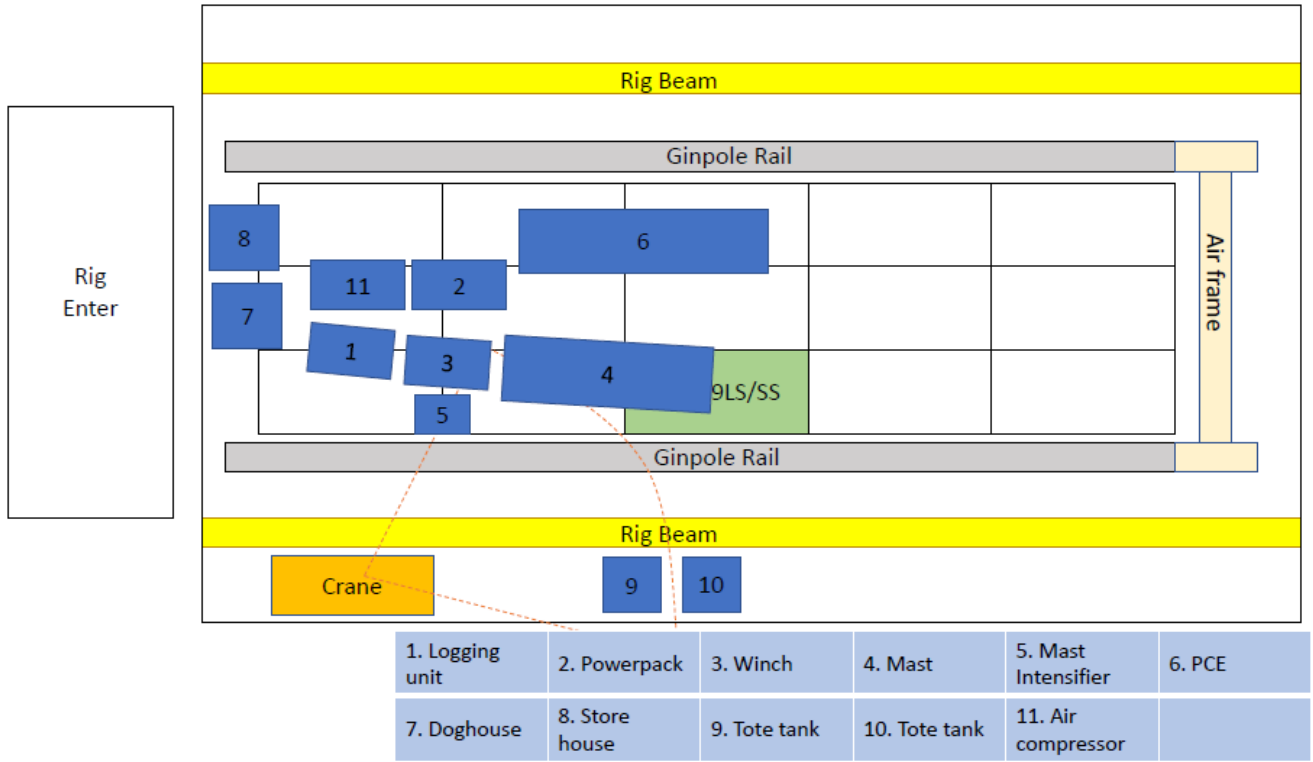


Fig: Overview of main deck.

**PLATFORM GENERAL LAYOUT SKETCH**



**ELINE EQUIPMENT LAYOUT SKETCH SUGGESTION**



**SECTION A2 CRANE AND HOISTING EQUIPMENTS**

NUMBER OF CRANE ONBOARD : 1 EA

**CRANE DETAILS**

TYPE OF CRANE	MAIN HOIST CAPACITY (mT)	FLY/AUX BLOCK CAPACITY (mT)	MAIN HOIST REACH LENGTH (M)	FLY/AUX REACH LENGTH (M)
MAIN CRANE	5	5	10	-
AUXILIARY CRANE	-	-	-	-
OTHER CRANE	-	-	-	-

**Picture of crane**

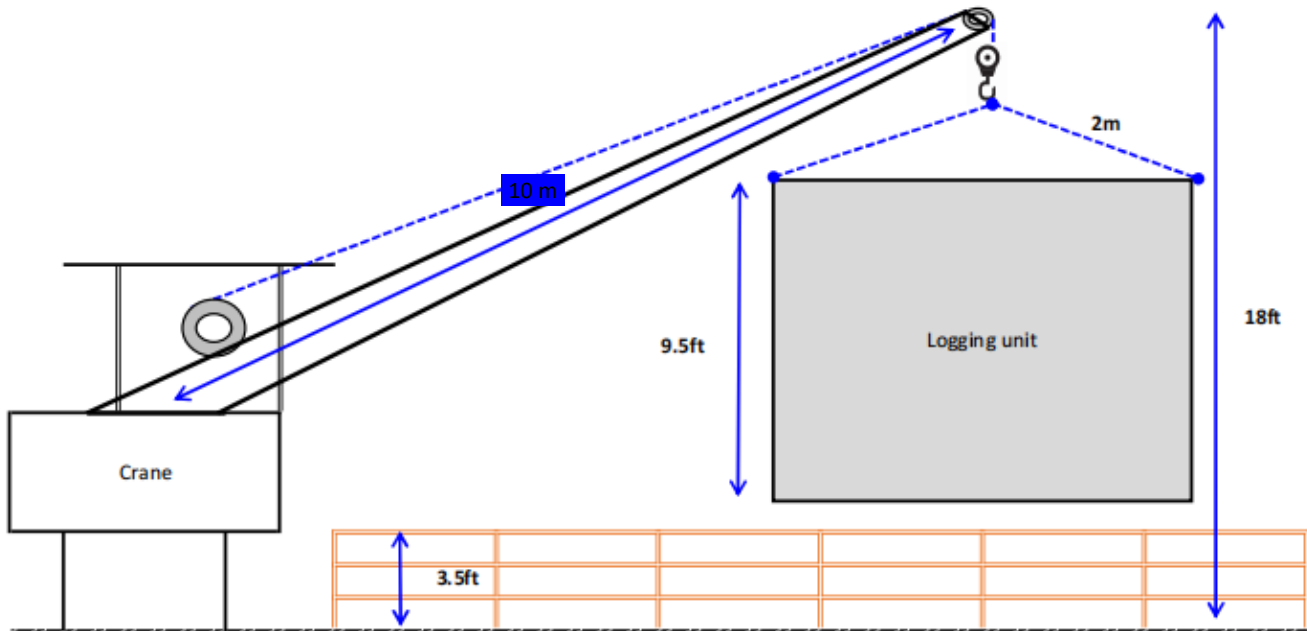








No	Item	Dimension				Sling	
		Length	Width	height	Weight(MT)	Size (OD x Length)	SWL(MT)
<b>Logging System</b>							
1	ASEP Logging Unit	2000mm	2130mm	2900mm	1.82T	16mm X 2.1mtr	4.75T
2	ASEP Power Pack	2240mm	1430mm	1690mm	1.82T	16mm X 4mtr	5.5T
3	ASEP Cable Winch	1875mm	1355mm	1320mm	1.15T	16mm X 2mtr	6.3T
<b>Mast System(High Reach Base Mast)</b>							
4	70ft Telescopic Mast Skid	6069mm	1524mm	1524mm	2.12T	19mm X 3mtr	9.4T
5	Telescopic Mast Column	6069mm	1524mm	1524mm	2.51T	13mm X 2.7mtr	4.4T
6	Mast Intensifier	1130mm	890mm	950mm	0.60T	13mm X 1.5mtr	3.5T
<b>Pressure Control Equipments</b>							
7	PCE	3860mm	1290mm	1720mm	4.9T	20mm X 3mtr	10T
<b>Supply/Maintenance Box &amp; Tool Pallet</b>							
8	6ft Mini Container(Mini Workshop)	1600mm	1850mm	2900mm	2.7T	22mm X 2mtr	16T
9	6ft Mini Container(Mini Workshop)	1600mm	1850mm	2900mm	2.7T	23mm X 2.17mtr	13T
10	Tote Tank	1500mm	1160mm	2340mm	0.8T	19mm X 1.9mtr	5T
<b>Auxillary</b>							
11	Air Compressor	2290mm	1350mm	1750mm	1.5T	16mm X 2mtr	6.9T



**SECTION B WELL DETAILS (BN-49)**

TOTAL SLOTS ON PLATFORM : 15

TOTAL SLOTS USED : 15

EMPTY SLOTS : 0

PRIORITY WELLS : 1

INTERVENTION HATCH COVER EXIST? :  YES  NO

TYPE OF COVER ON TOP OF WELLS :  GRATING  PLATE (REMOVEABLE)  
 PLATE (NON REMOVEABLE)  
 OTHERS (PLEASE SPECIFY)

---

OBSTRUCTION AROUND WELL AREA :  YES (PLEASE SPECIFY)  NO

---

WELL TYPE :  OIL PRODUCER  GAS PRODUCER  
 INJECTOR WELL  
 OTHER (PLEASE SPECIFY)

---

TUBING SIZE :  2<sup>3</sup>/<sub>8</sub>"  2<sup>7</sup>/<sub>8</sub>"  3<sup>1</sup>/<sub>2</sub>"  
 4<sup>1</sup>/<sub>2</sub>"  5<sup>1</sup>/<sub>2</sub>"

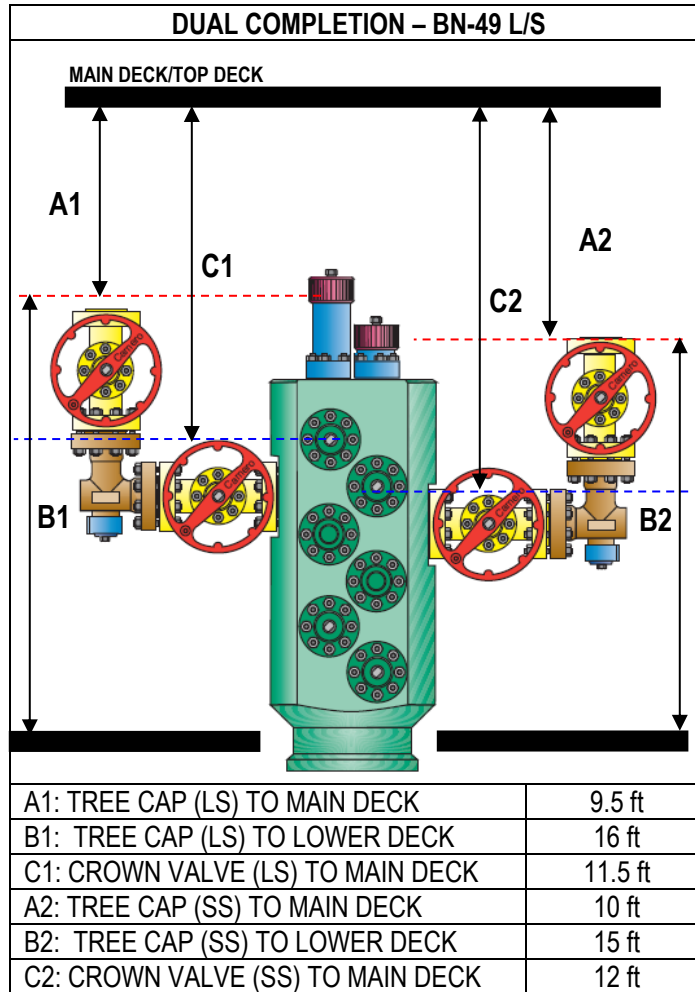
X-MAS TREE RATING :  3K PSI  5K PSI  10K PSI  20K PSI

X-MAS TREE CONNECTION TYPE :  BOWEN  OTIS  ELMAR  
 SOLAR ALERT

X-MAS TREE CONFIGURATION :  SINGLE STRING  DUAL STRING  
 CONDUCTOR SHARE WELLHEAD (CSW)/SPLITTER  
 >2 STRING (MULTIPLE STRING)

X-MAS TREE CONNECTION SIZE : 3-1/8" OTIS

X-MAS TREE SKETCH



Well	Tree Cap to Main Deck	Tree Cap to Lower Deck	Crown Valve to Main Deck
BN-49 LS	9.5 ft	16 ft	11.5 ft
BN-49 SS	10 ft	15 ft	15 ft



Fig: X-mas tree well BN-49 L/S.



Fig: Tree cap well BN-49.

**SECTION C UTILITIES ONBOARD PLATFORM**
**DIESEL SUPPLY**

SUPPLY TYPE :  HOSE  JERRY CAN  VALVE  TAP  CAM LOCK

DIESEL TYPE : N/A

CONNECTION TYPE : N/A

HOSE LENGTH : N/A

**WATER SUPPLY**

SUPPLY TYPE :  HOSE  TOTE TANK  JERRY CAN  TAP  
 VALVE  1/4" FITTING  1/2" FITTING  
 CAM LOCK

WATER TYPE :  FRESH WATER  SEA WATER  TREATED SEA WATER

CONNECTION TYPE : N/A

HOSE LENGTH : N/A

**ELECTRICAL POWER SUPPLY**

SUPPLY TYPE :  AC  DC

VOLTAGE :  110V  240/220V  415V  440V

PHASING :  SINGLE PHASE  3-PHASE

MAX CURRENT :  1A  5A  10A  12/15A  20A

CONNECTION TYPE :  FLYING LEADS  ZONE 2 CONNECTOR (PLS SPECIFY TYPE)  
 TAPPED FROM DISTRIBUTION PANEL

CABLE LENGTH : N/A

**COMPRESSED AIR SUPPLY**

SUPPLIED PRESSURE :  80-110 PSIA  100-150 PSIA  > 150 PSIA  
SUPPLIED CFM :  20-50  50-100  100-200  
DRIED AIR? :  YES  NO  
CONNECTOR TYPE :  1" CHICAGO  2" CHICAGO  ¾" NPT  
 1" NPT  ½" FITTING  ¾" FITTING  
 1" FITTING  VALVE  
HOSE LENGTH : N/A

Additional Picture for Reference:





Fig: Fire extinguisher box at cellar deck.



Fig: Overview of air frame.



Fig: Overview of main deck.

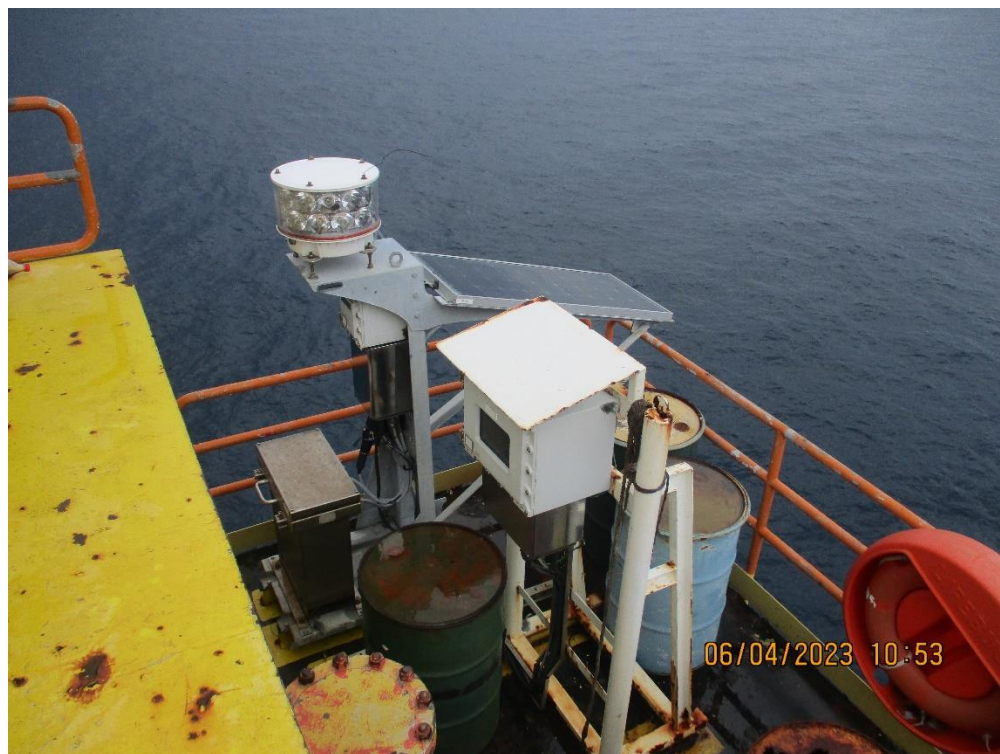


Fig: Solar panels at main deck.





Fig: Overview of loading bay.



Fig: Overview of main deck.

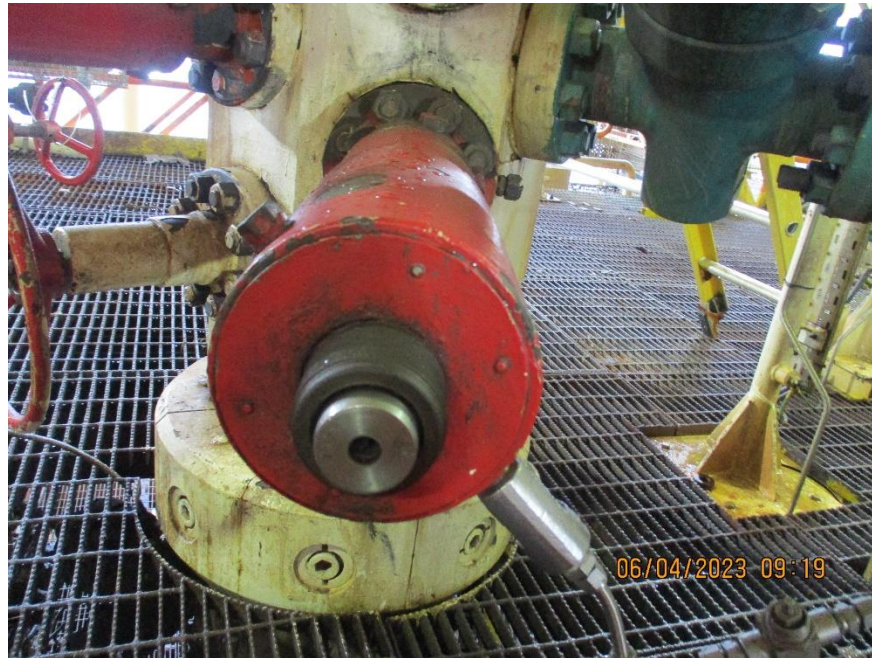


Fig: Overview of main deck.



Fig: Overview of main deck.







#### HIGHLIGHT/NOTES FOR THE OPERATION

- Identify main deck space is sufficient for E-line & slickline onboard / other equipment at main deck
- Identify crane type, capacity, boom height/angle/swing limitation if any
- Identify wellhead connection to confirm wellhead crossover for operations
- Identify lighting at main deck & wellhead area (if 24 hours operation is required)
- Identify other concerns (if any)