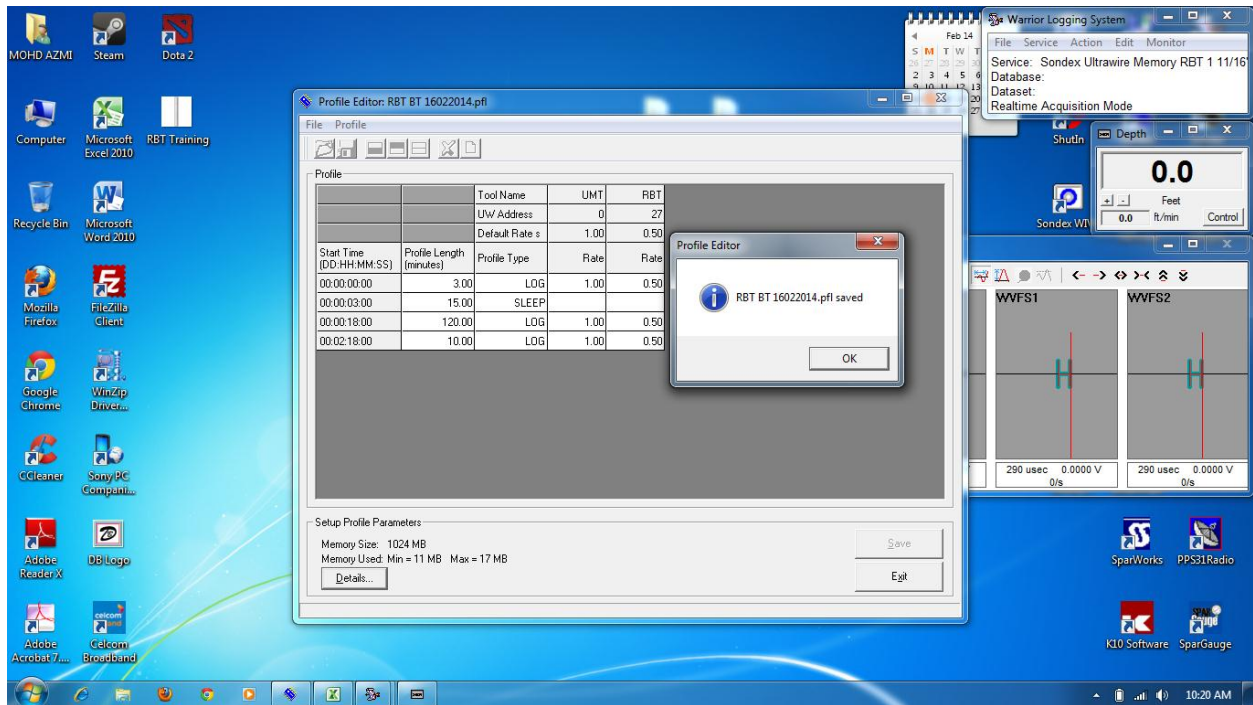
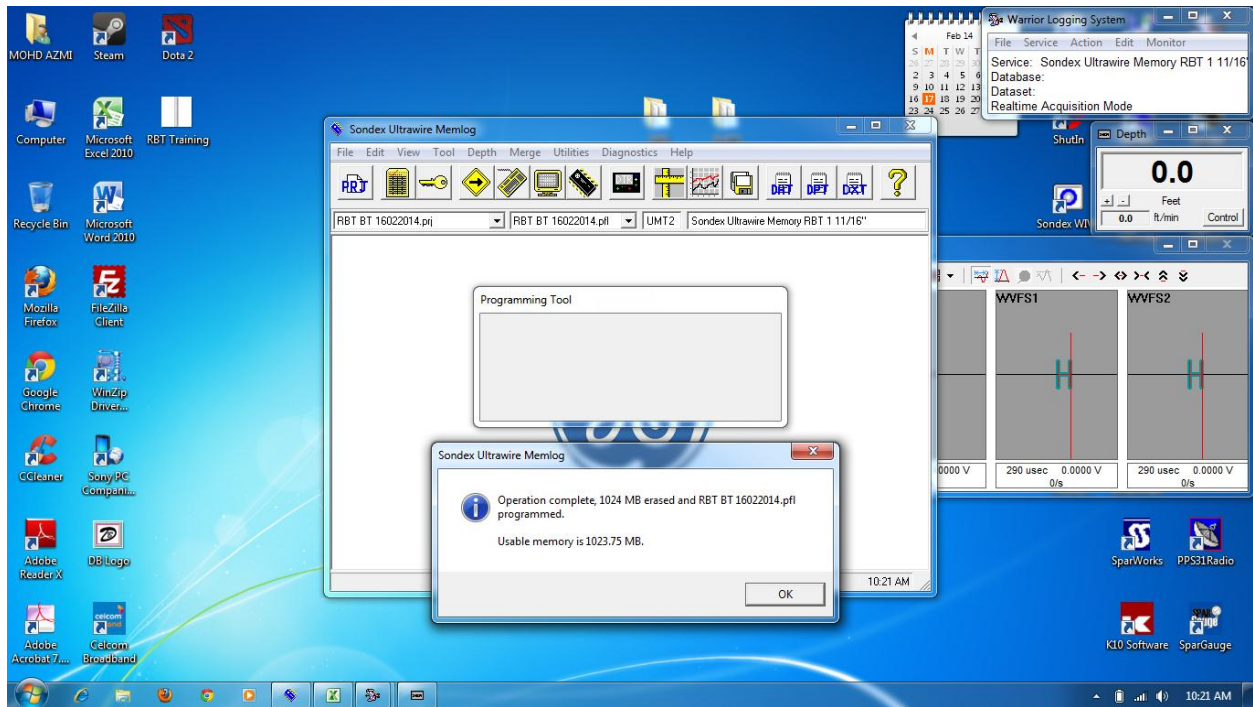


Quick Guide Radial Bond Log 1 11/16” Using Memory UMT 007

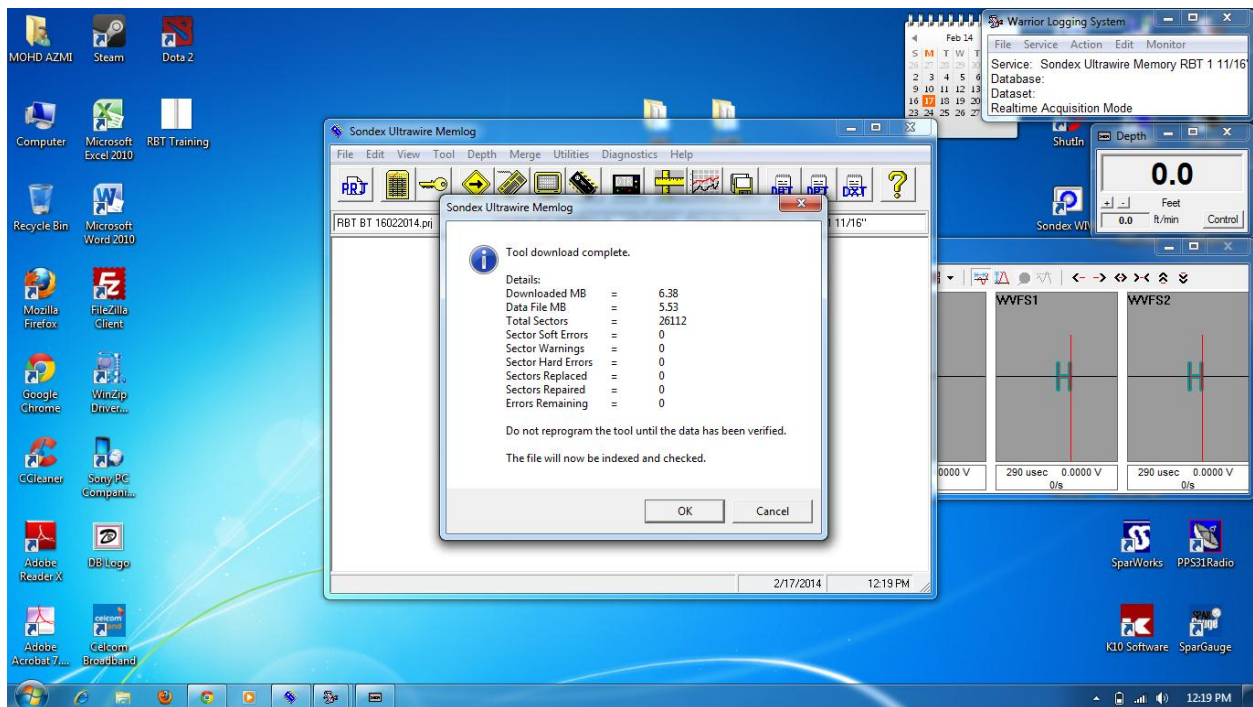
Programming & Data Processing



- Open Acquisition.
- Choose Service – Sondex Ultrawire Memory RBT 1 11/16.
- Edit Tool String and Save.
- Edit Profile Editor and Save.



- Programme tool as usual.
- Disconnect UMU cable and Hook up Battery.
- Check the connection and connect to slickline toolstring.
- Perform Logging as per program.
- After that, bleed off pressure and disconnect from slickline tool.
- Disconnect battery and download the data from tool and DTR.



Uwstats - Notepad

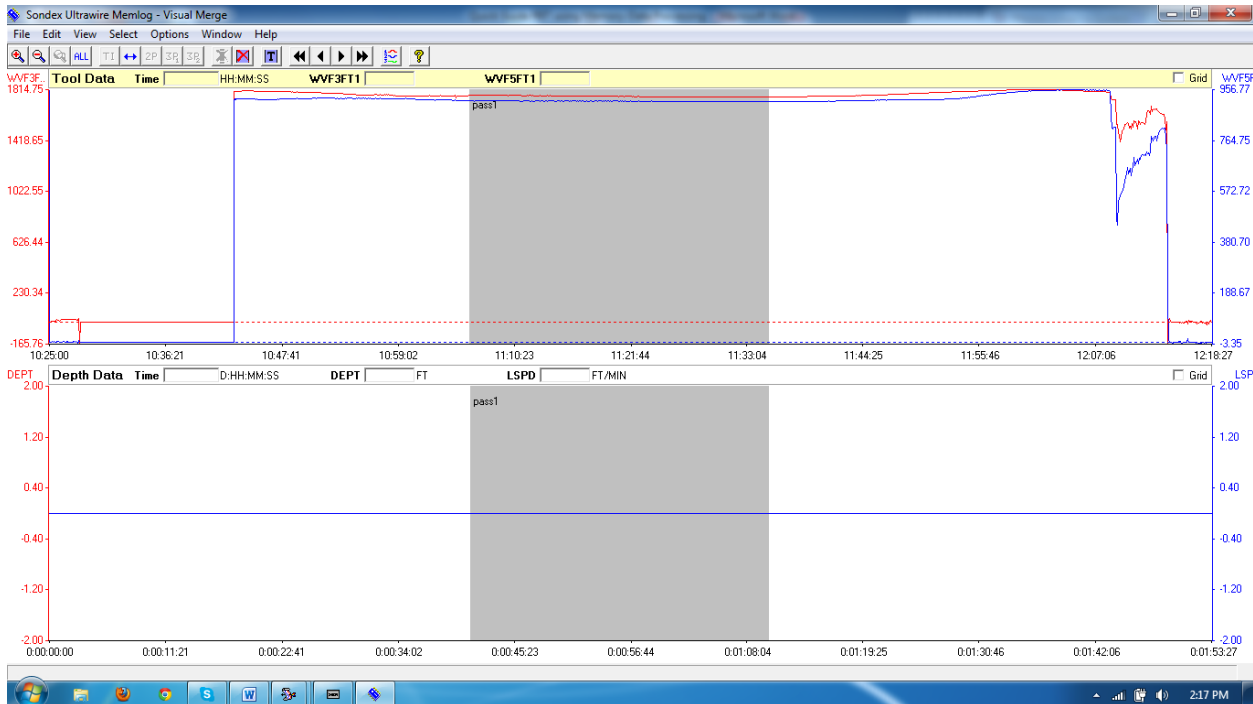
File Edit Format View Help

Sondex Ultrawire Memory Statistics File Mon Feb 17 12:20:16 2014

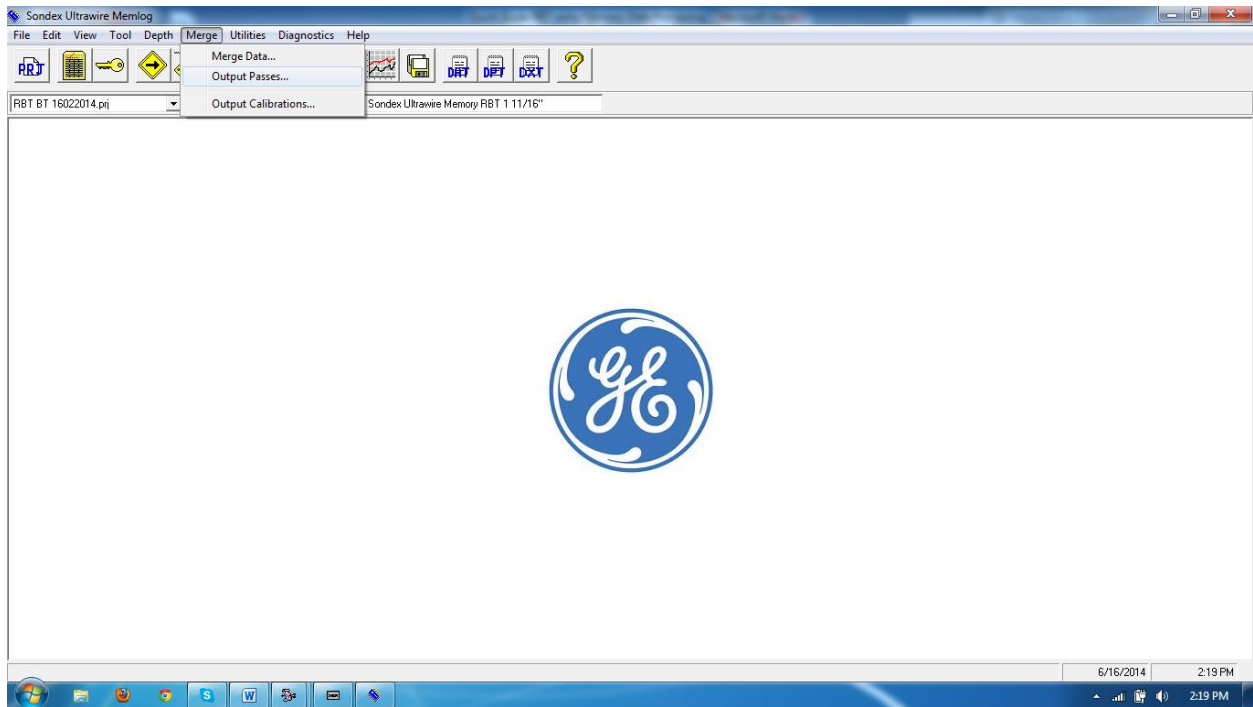
Tool Errors 0
 Config Errors 0
 Other Errors 0

Tool Addr/Name	Packets Received	Config Max Size	Config Min Size	Actual Size	Not Ready	Not Recognized	Command Failed	Ack Error or Timeout	Data Error or Timeout	Other Error
0	0	-1	-1	-1	0	0	0	0	0	0
1	0	-1	-1	-1	0	0	0	0	0	0
2	0	-1	-1	-1	0	0	0	0	0	0
3	0	-1	-1	-1	0	0	0	0	0	0
4	0	-1	-1	-1	0	0	0	0	0	0
5	0	-1	-1	-1	0	0	0	0	0	0
6	0	-1	-1	-1	0	0	0	0	0	0
7	0	-1	-1	-1	0	0	0	0	0	0
8	0	-1	-1	-1	0	0	0	0	0	0
9	0	-1	-1	-1	0	0	0	0	0	0
10	0	-1	-1	-1	0	0	0	0	0	0
11	0	-1	-1	-1	0	0	0	0	0	0
12	0	-1	-1	-1	0	0	0	0	0	0
13	0	-1	-1	-1	0	0	0	0	0	0
14	0	-1	-1	-1	0	0	0	0	0	0
15	0	-1	-1	-1	0	0	0	0	0	0
16	0	-1	-1	-1	0	0	0	0	0	0
17	0	-1	-1	-1	0	0	0	0	0	0
18	0	-1	-1	-1	0	0	0	0	0	0
19	0	-1	-1	-1	0	0	0	0	0	0
20	0	-1	-1	-1	0	0	0	0	0	0
21	0	-1	-1	-1	0	0	0	0	0	0
22	0	-1	-1	-1	0	0	0	0	0	0
23	0	-1	-1	-1	0	0	0	0	0	0
24	0	-1	-1	-1	0	0	0	0	0	0
25	0	-1	-1	-1	0	0	0	0	0	0
26	0	-1	-1	-1	0	0	0	0	0	0
27 RBT	5901	459	249	459	17712	0	0	0	0	0
28	0	-1	-1	-1	0	0	0	0	0	0
29	0	-1	-1	-1	0	0	0	0	0	0
30	0	-1	-1	-1	0	0	0	0	0	0
31	0	-1	-1	-1	0	0	0	0	0	0
32	0	-1	-1	-1	0	0	0	0	0	0
33	0	-1	-1	-1	0	0	0	0	0	0
34	0	-1	-1	-1	0	0	0	0	0	0
35	0	-1	-1	-1	0	0	0	0	0	0
36	0	-1	-1	-1	0	0	0	0	0	0
37	0	-1	-1	-1	0	0	0	0	0	0
38	0	-1	-1	-1	0	0	0	0	0	0
39	0	-1	-1	-1	0	0	0	0	0	0
40	0	-1	-1	-1	0	0	0	0	0	0
41	0	-1	-1	-1	0	0	0	0	0	0
42	0	-1	-1	-1	0	0	0	0	0	0

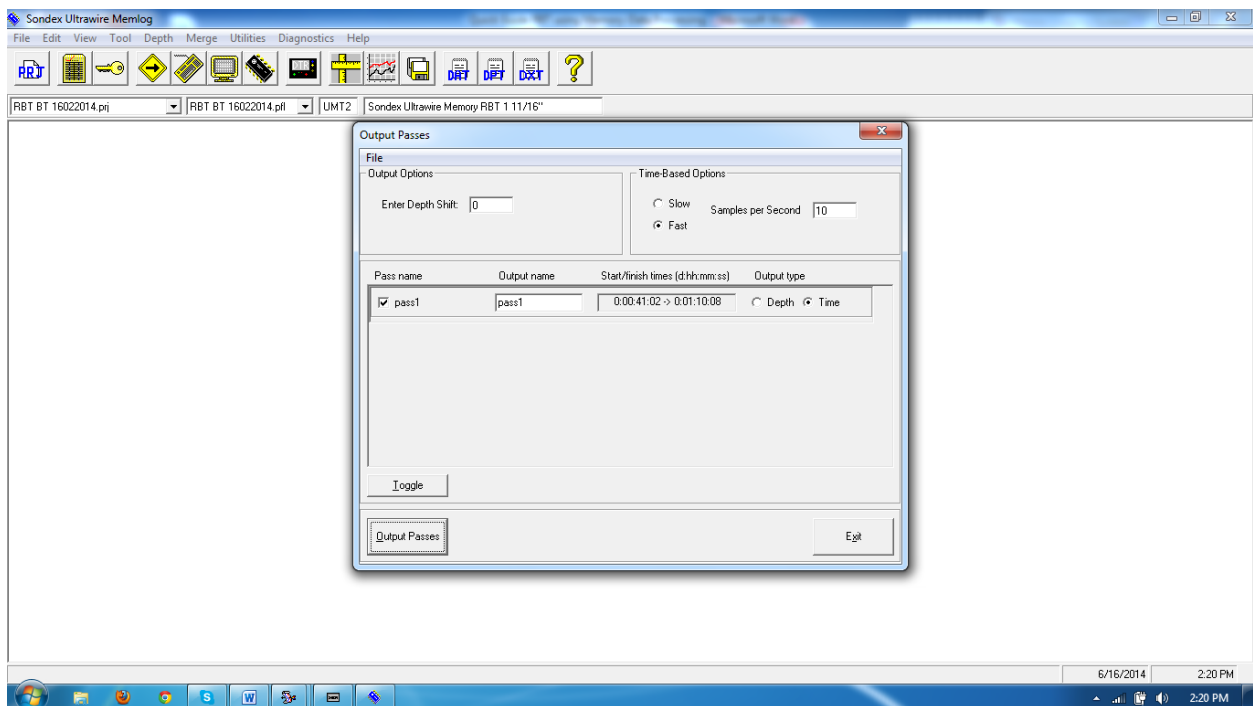
- Check the index and make sure no error occur.



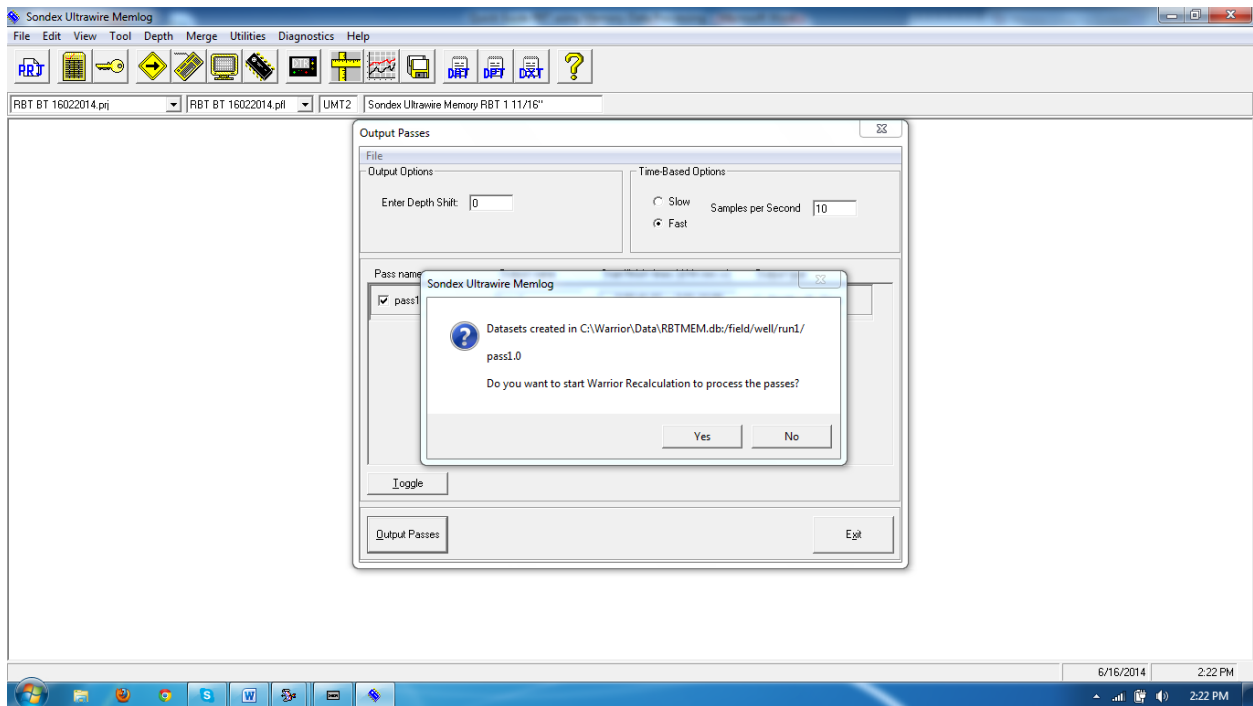
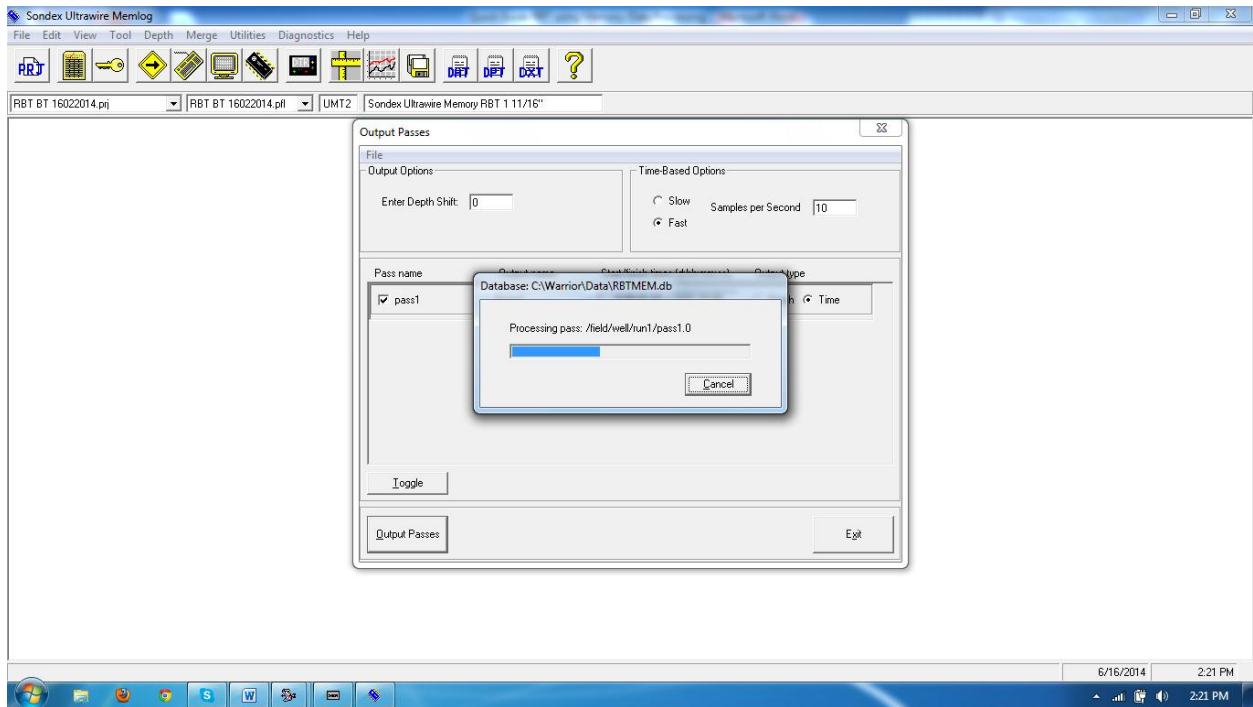
- Create Pass for Logging Up as per program and Save



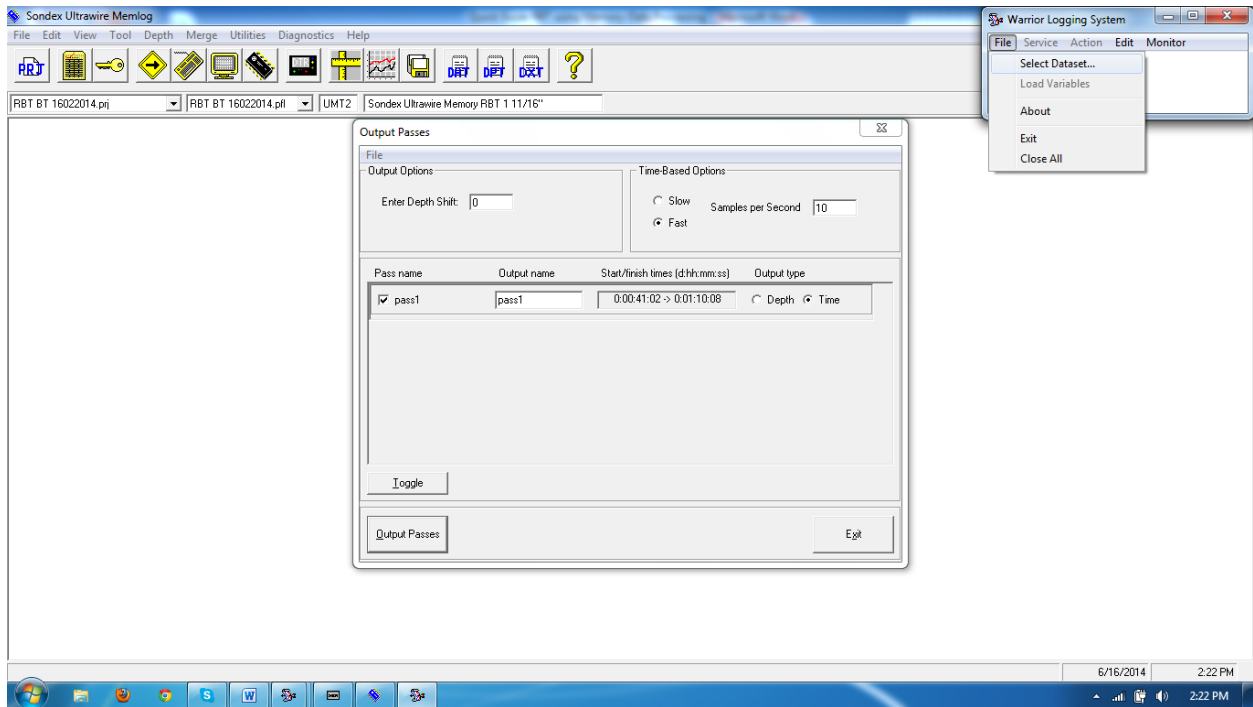
- Click merge and choose Output Passes



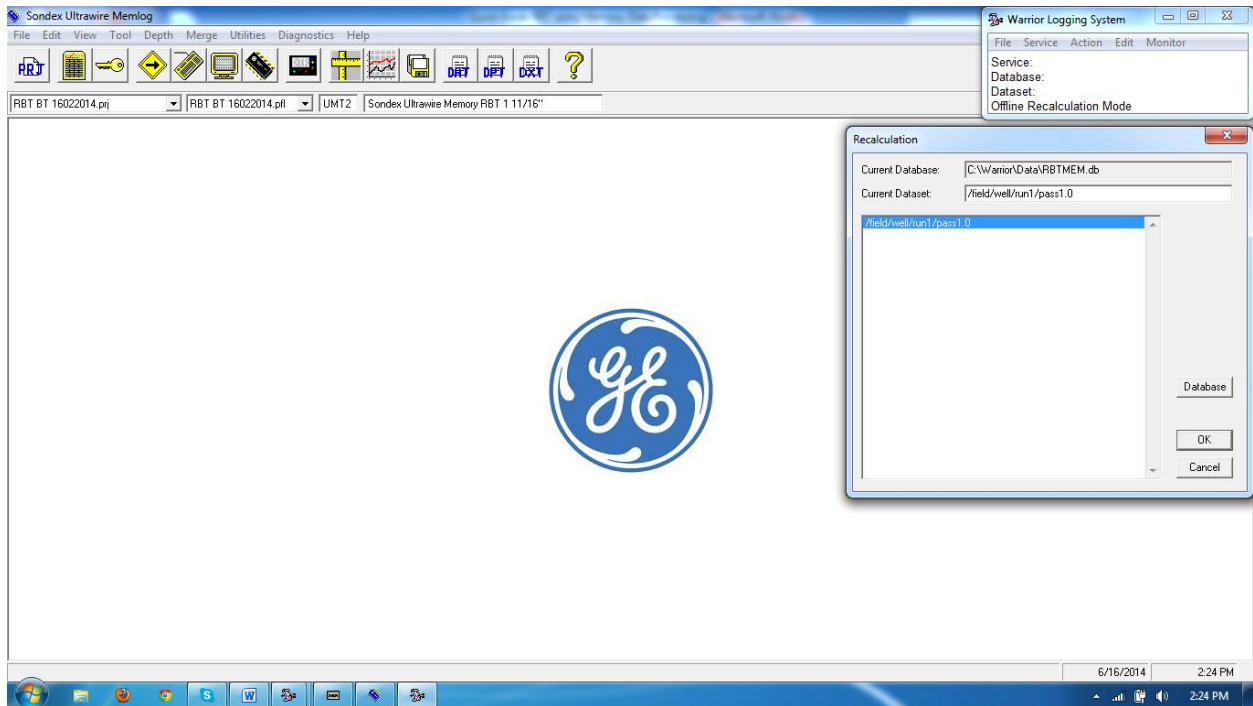
- Click Output Passes and Save



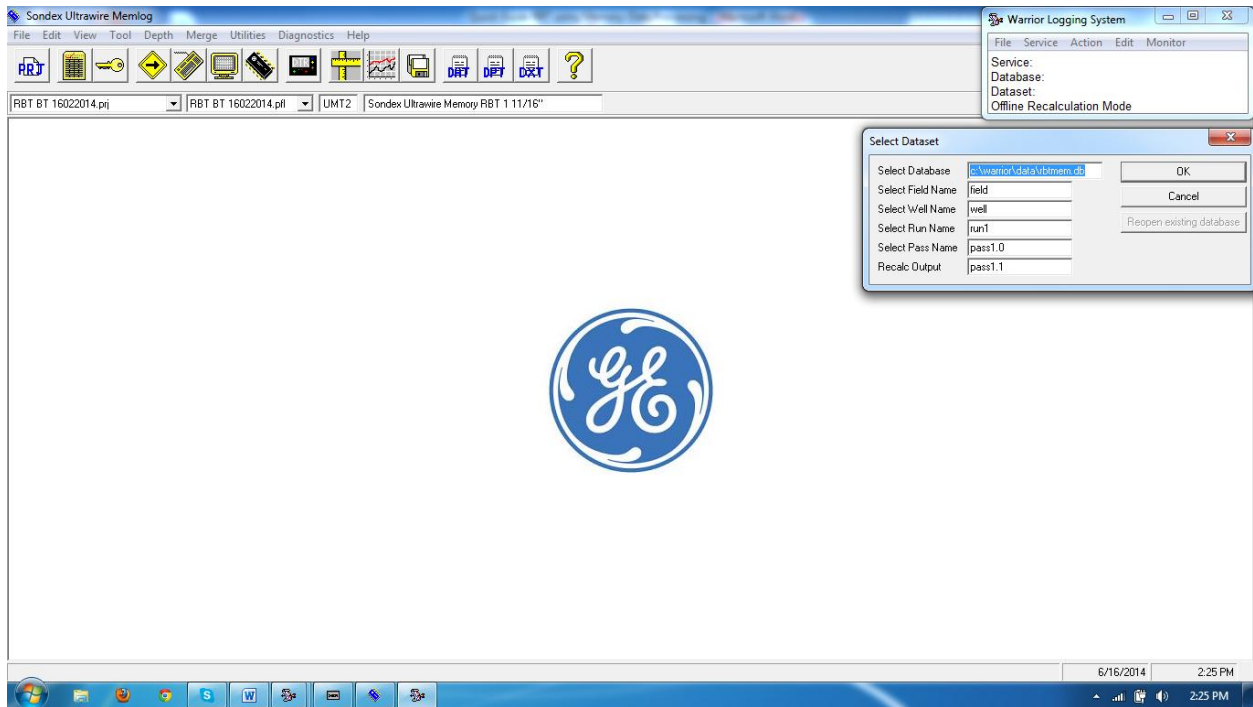
- Click Yes for Recalculation



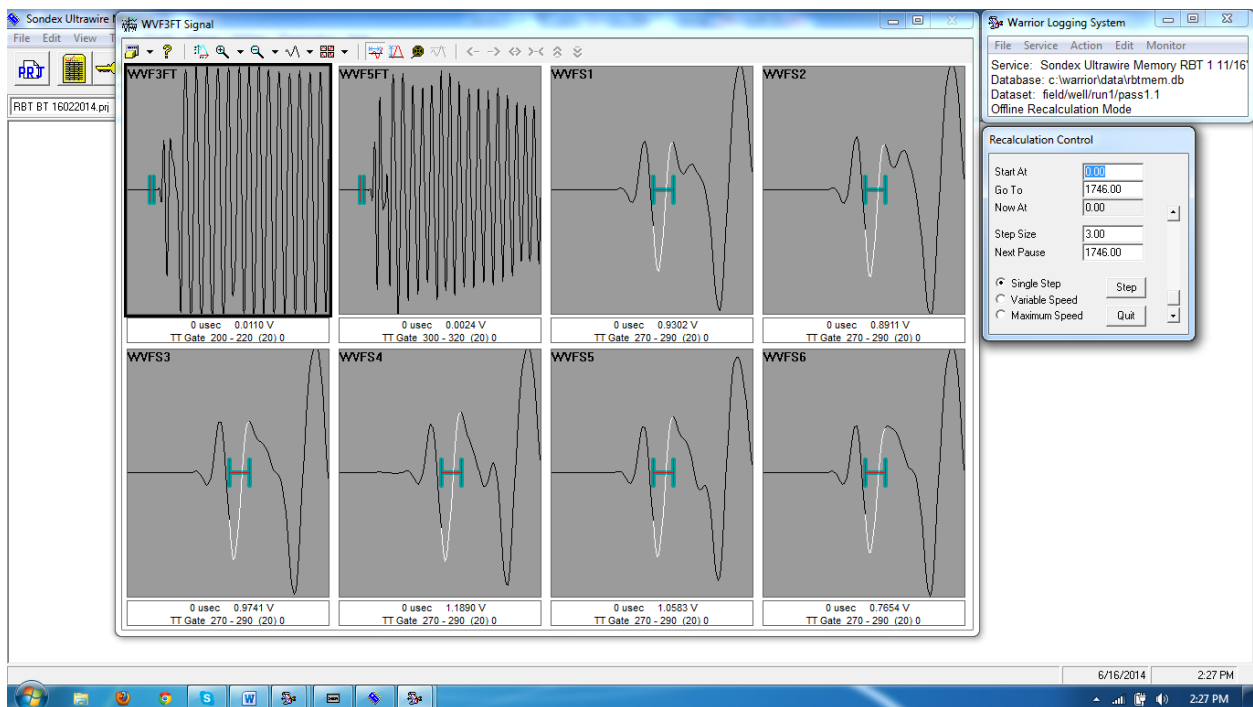
- Click File and click Select Dataset.
- Choose the data.DB that has been saved.



- Click Ok

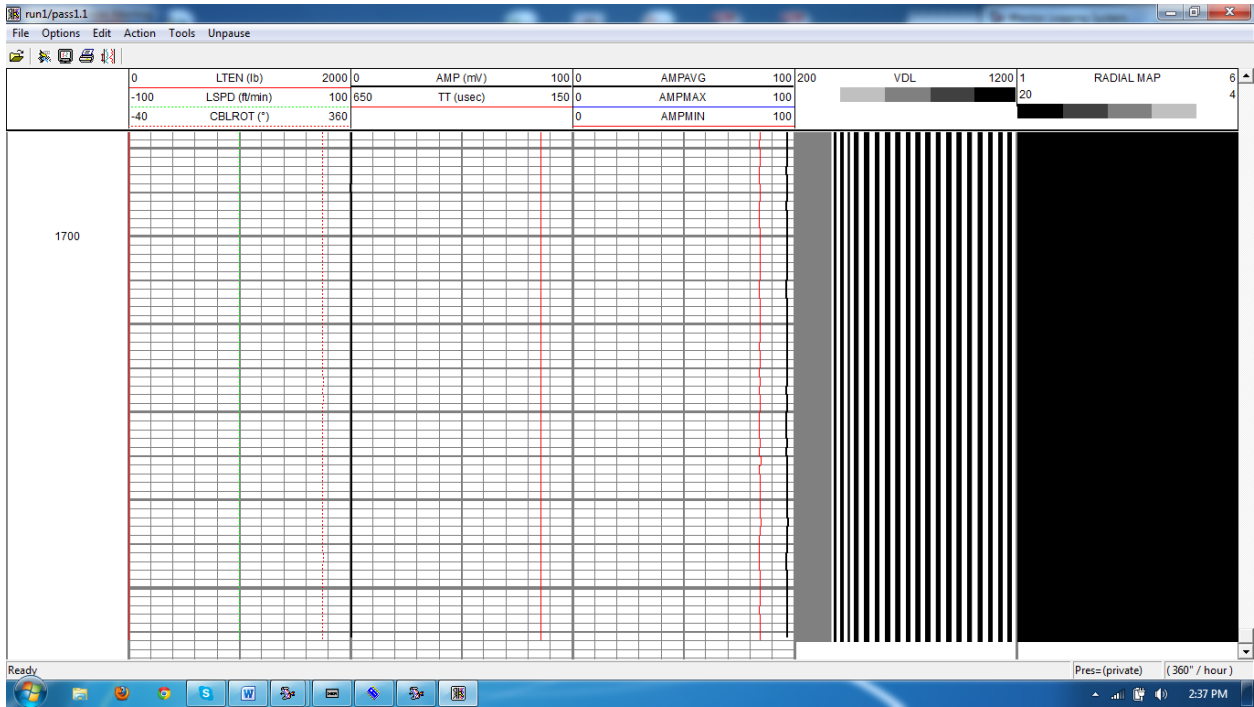


- Click ok



- Before re-calculation, find the free pipe in the area of logging and adjust the Amplitude Gate (White Colour) and Travel Time Gate (Green Colour) same like calibration process.
- Click Maximum Speed.

- If there is no free pipe, click Maximum Speed. It will use pre-established gate positions.



- Check the data quality of Logging and send the las file to I-Solution for further analysis.