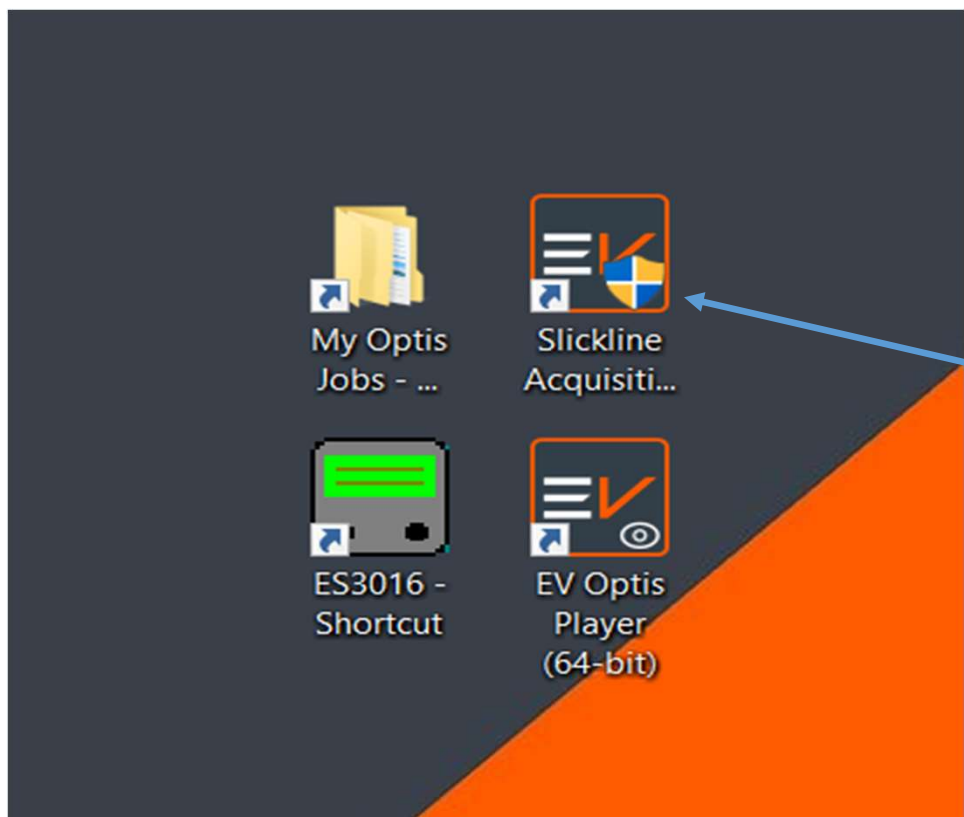


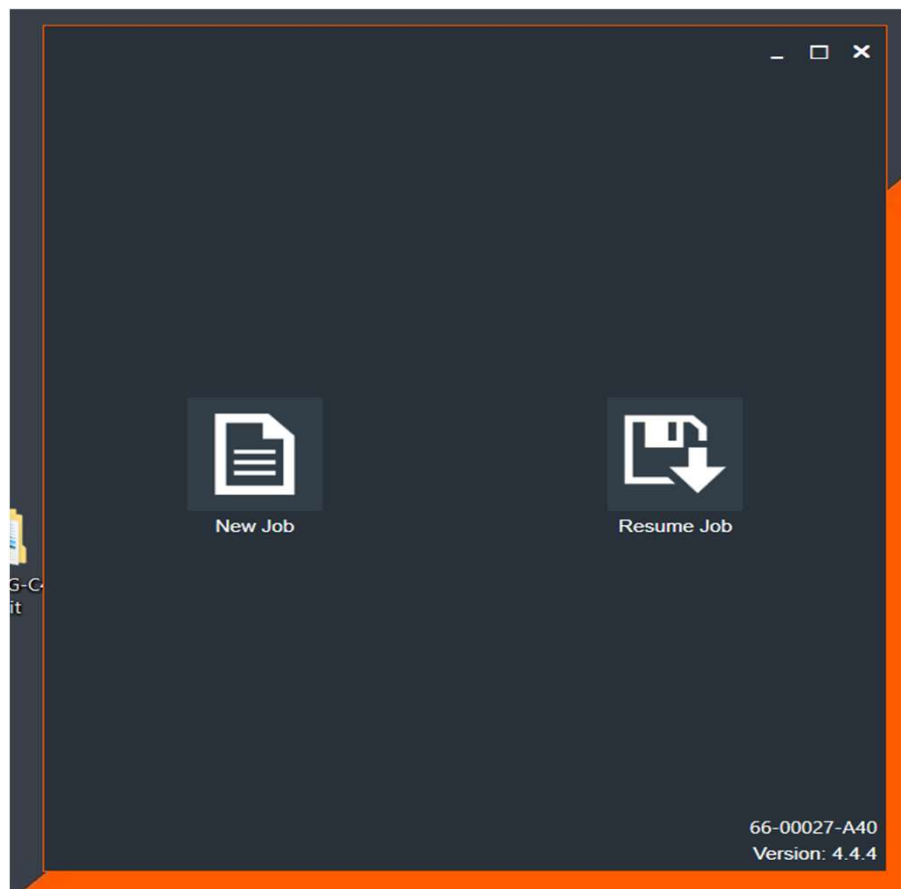
EV Camera Memory Programming

By Mathias Rauth



Look up for the following software inside EV Laptop and click.





Click New Job to start a job that
is yet to be downloaded
Or
Click Resume Job to open
previously downloaded job to
continue work or editing.

Location: C:\Users\Optis User\Documents\My Optis J Browse...

Job Name
EV Cam

Client Details
Client DB

Well Details
Field LABUAN
Well A
Location BASE
Run 1

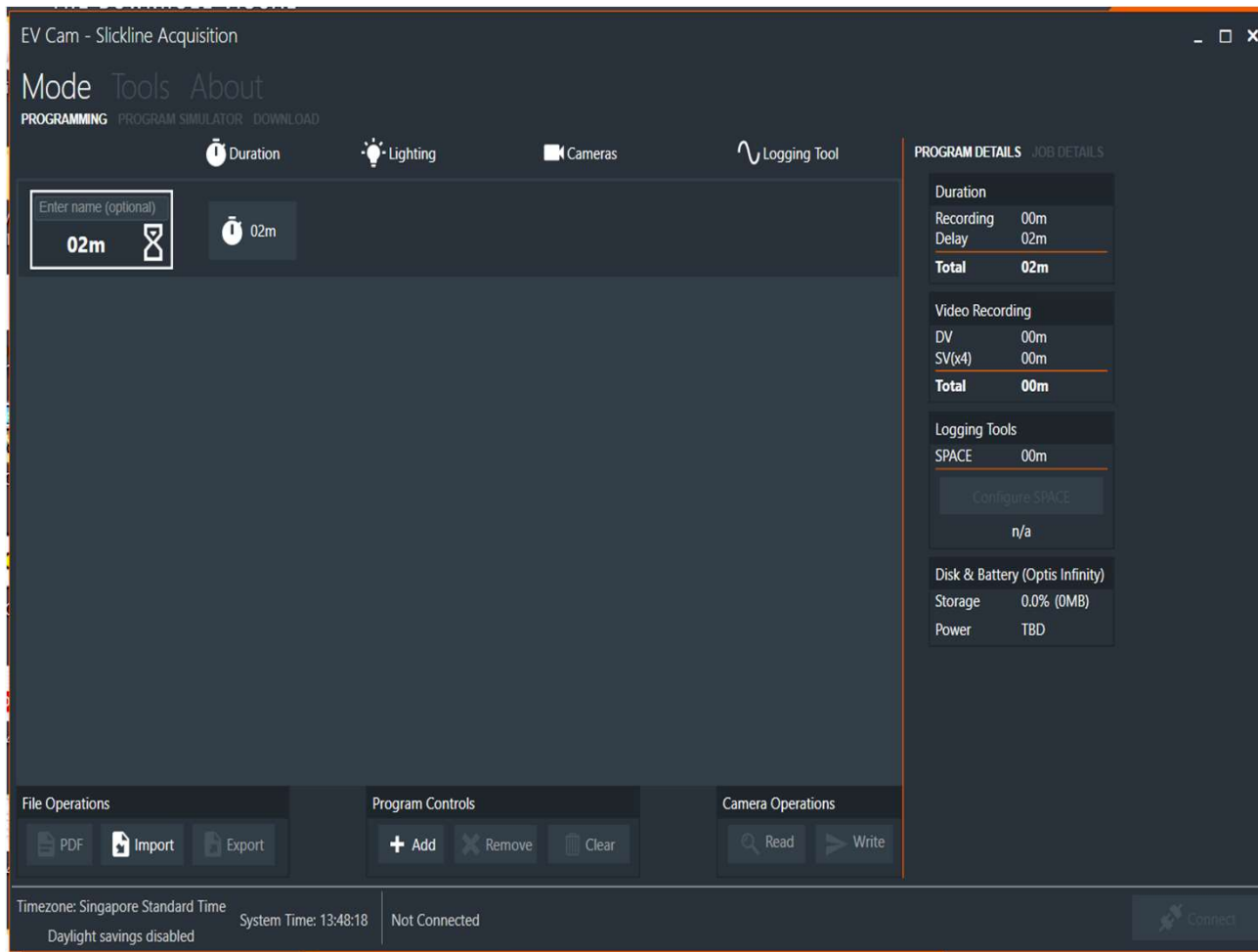
Administrative
Ticket Number
Type Log
Recorded By
Witnessed By

Run Details
Depth Reached
Depth Driller

OK

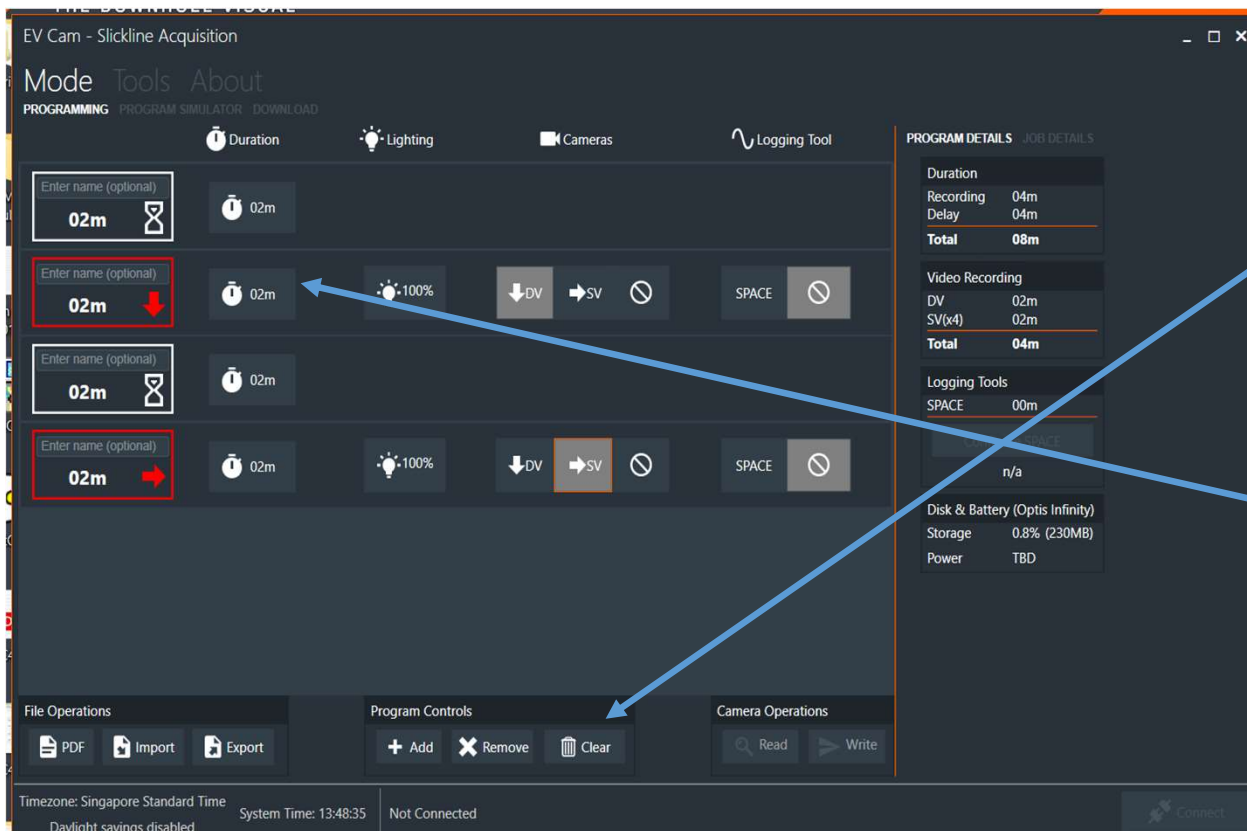
By clicking New Job, you will be directed to the following window to enter detail or job information.

Your job file will be created inside "My Optis Jobs"



Then you will be displayed the following window where you will create the program to EV Cam tool.

Note: When programming tool, must find power supply to connect to programming sub. Do not use battery for programming.



Next, you will need to add programmed sequence at the program control section.

Then, you will be shown the following time programming duration.

Furthermore, you can adjust the lighting and choose camera angle either DV or SV.

Note: The first entry will be Delay mode.

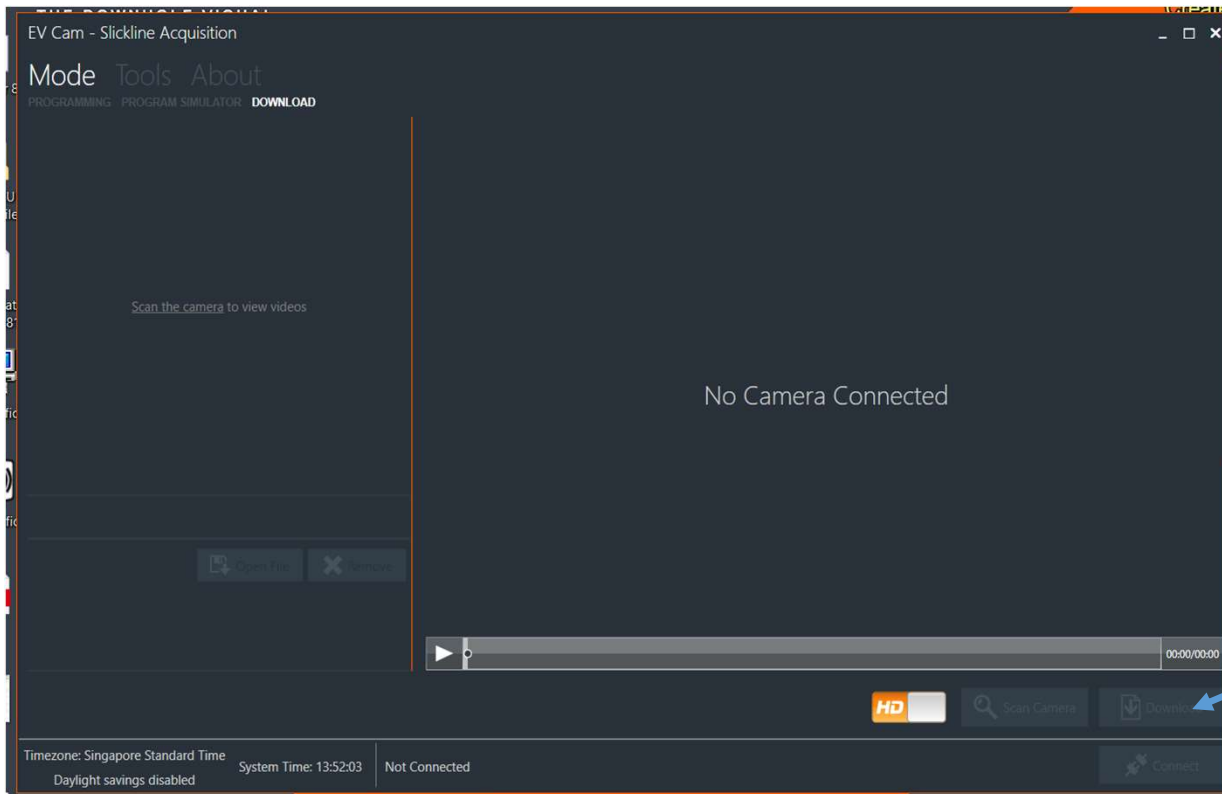
The screenshot shows the 'EV Cam - Slickline Acquisition' software interface. The main window is divided into several sections:

- Mode Tools About**: Navigation tabs at the top.
- PROGRAMMING**: The active section, containing sub-sections for **Duration**, **Lighting**, **Cameras**, and **Logging Tool**.
- PROGRAM DETAILS**: A panel on the right showing summary information:
 - Duration**: Recording 04m, Delay 04m, **Total 08m**
 - Video Recording**: DV 02m, SV(x4) 02m, **Total 04m**
 - Logging Tools**: SPACE 00m
 - Disk & Battery (Optis Infinity)**: Storage 0.8% (230MB), Power TBD
- File Operations**: PDF, Import, Export buttons.
- Program Controls**: Add, Remove, Clear buttons.
- Camera Operations**: Read, Write buttons.
- Status Bar**: Timezone: Singapore Standard Time, Daylight savings disabled, System Time: 13:48:35, Not Connected, and a Connect button.

Red boxes highlight the 'Enter name (optional)' fields and the '02m' duration input for the first two camera slots. A red arrow points to the '02m' input of the second slot. A blue arrow points from the 'Total 08m' in the details panel to the right. Another blue arrow points from the 'Connect' button to the bottom right. A third blue arrow points from the 'Add' button to the bottom right.

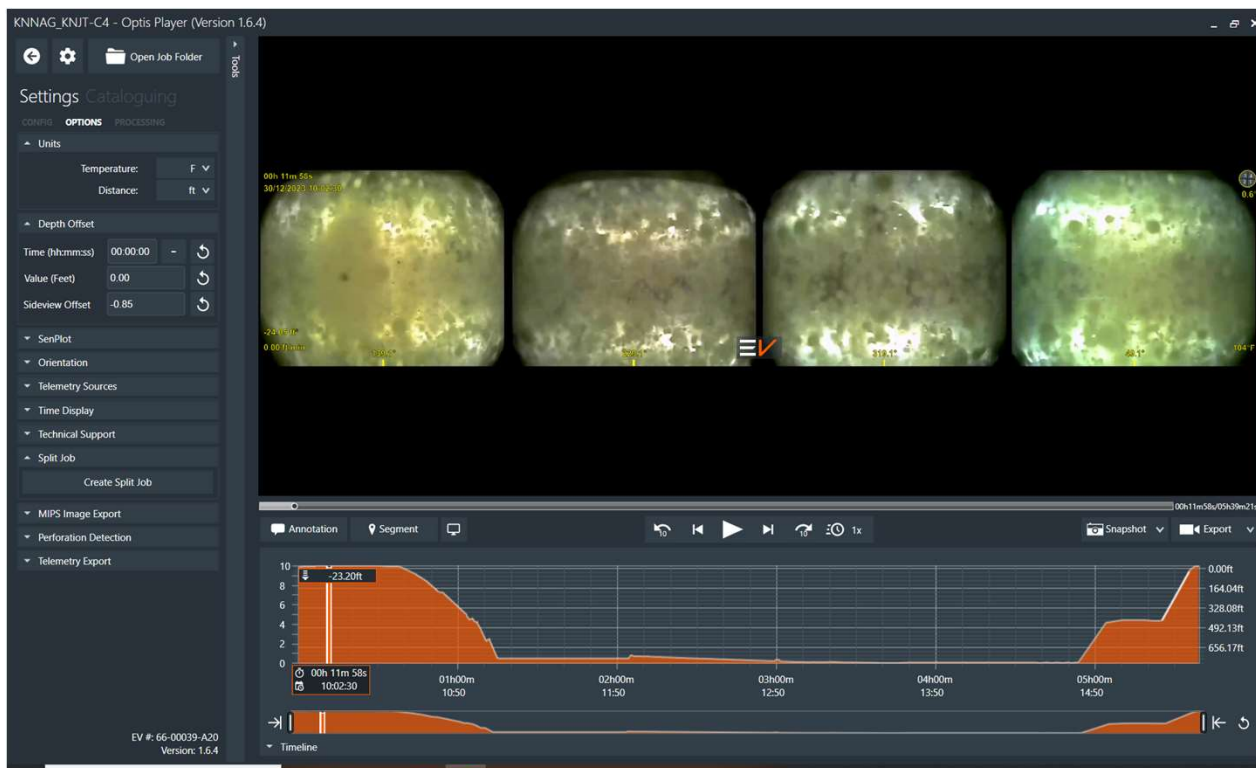
As you program, the following window will automatically calculate the duration of the programming

This button is used when to connect to EV Cam tool for download or programming. 'Primed' indicator will appear when successfully connected.



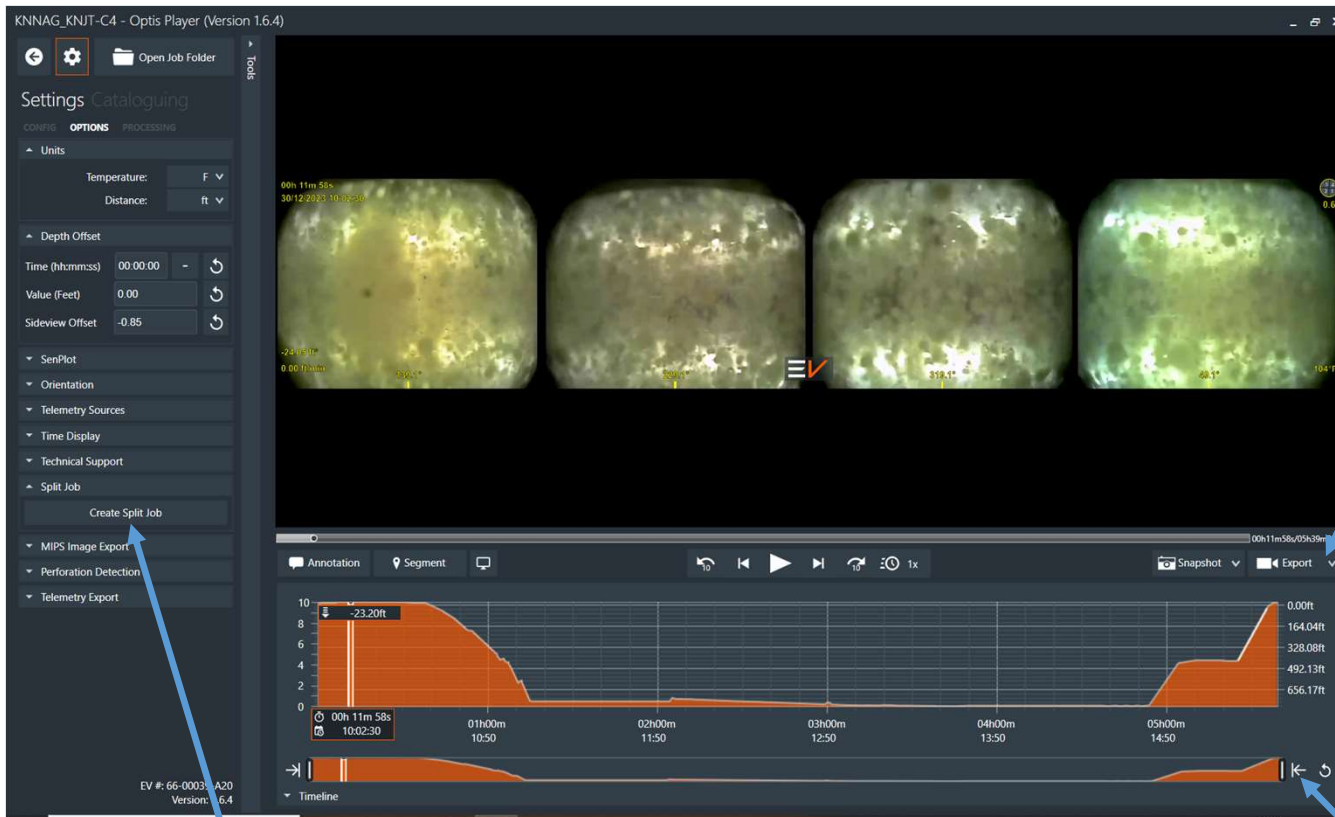
This window is where when to download data from EV Cam tool.

When tool is connected, next you will need to click the download button.



This is an example when data is downloaded and open at Optis Player

Make sure to choose units and the offset between DV and SV at the "Option".



Export button to extract the whole recording or to create miniclip.

Split job to create specific or chosen section of the recording.

You may cut or choose video section by moving the cursor or to reset back to usual.

Thank you !

Questions and Answering Session

Prepared by,



Name : Mathias Rauth
Designation : Junior Field Engineer
Date : 4/1/2024

Verified by,

Name : Faris Mohd Firdaus
Designation : Field Service Manager
Date :

Verified by,

Name : Mohd Zahir Bin Abdul Manan
Designation : Operation Manager
Date :