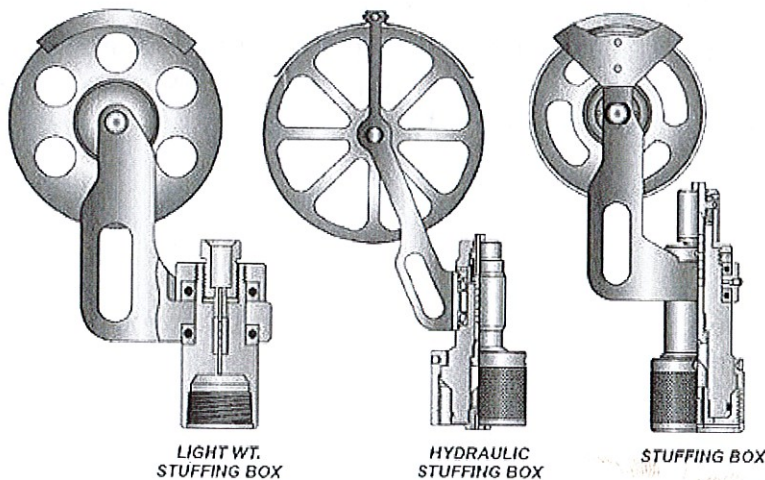


B. SURFACE EQUIPMENT

1. Stuffing Box



Stamp: 5 A DEC 2019

What is Stuffing Box

- It is the primary barrier for slickline. Positioned at the uppermost point at the PCE string

What is the purpose of stuffing Box

- To seal around the wire at the upper end of the lubricator during slickline operation, in both static and dynamic condition

How to operate Stuffing Box

- Can be operate by manual or by liquid control
- Packing work as break that hold the wire

What is maintenance required for Stuffing Box

- Change the packing, upper and lower gland and BOP plunger
- Check for the condition of the other part such as sheave, body, piston (yearly Hydro test and MPI)

What is safety precaution required for Stuffing Box

- Check the packing function or not
- Check the right and correct size wire on stuffing box

GAZALI MEHRY
Operation Manager
Dimension Bid (M) Sdn Bhd
(East Malaysia Operation)

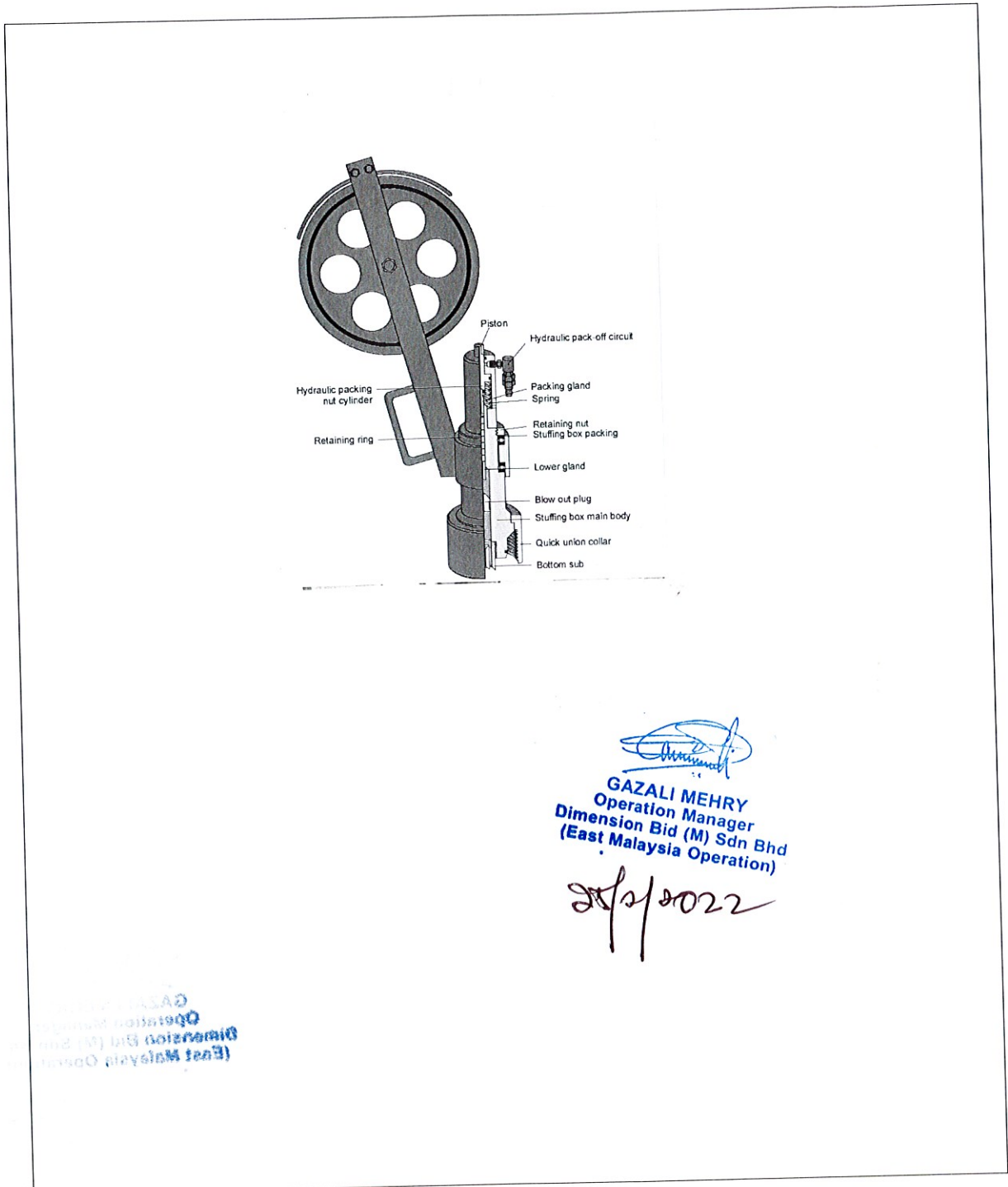
25/2/2022



What is potential hazard during handling Stuffing Box

- Pinch point
- Wire break
- Back pain due to weight of stuffing box

Draw & name each part of stuffing box



[Signature]
GAZALI MEHRY
 Operation Manager
 Dimension Bid (M) Sdn Bhd
 (East Malaysia Operation)
 28/1/2022

[Mirrored/Inverted Stamp]
 GAZALI MEHRY
 Operation Manager
 Dimension Bid (M) Sdn Bhd
 (East Malaysia Operation)



2. Lubricator

What is Lubricator

- It positioned between stuffing box and BOP
- There are ported and non-ported joint
- Have size 2 feet, 4 feet and 8 feet length

What is the purpose of Lubricator

- To allow wireline tools to enter or removed from the well under pressure

How to operate Lubricator

- Crane
- Use Chain block
- Wireline must

What is maintenance required for Lubricator

- Body inspection and body pressure hold test
- Inspection of magnetic particle inspection
- Painting protection
- O-Ring and connection in good condition

What is safety precaution required for Lubricator

- Have MPI certificate
- FA to work by hold pressure
- Lower section have bleed off
- O-Ring in a good condition

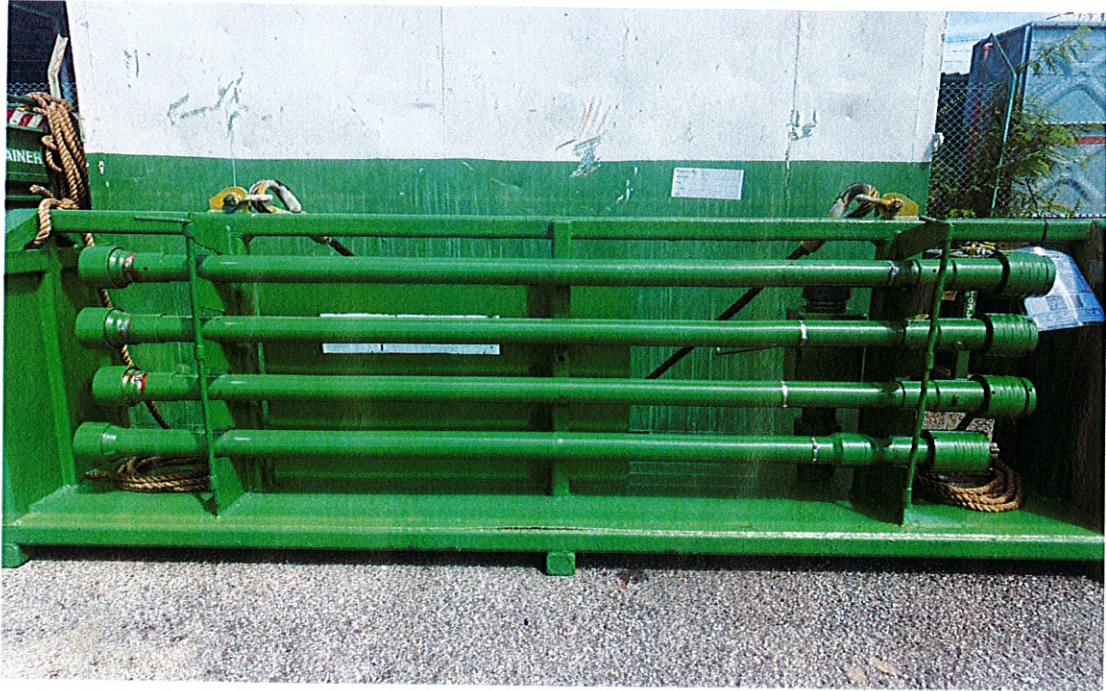
What is potential hazard during handling Lubricator

- Pinch point
- Back pain
- Dropping an object


GAZALI MEHRY
Operation Manager
Dimension Bid (M) Sdn Bhd
(East Malaysia Operation)

25/2/2022

Draw & name each part of Lubricator

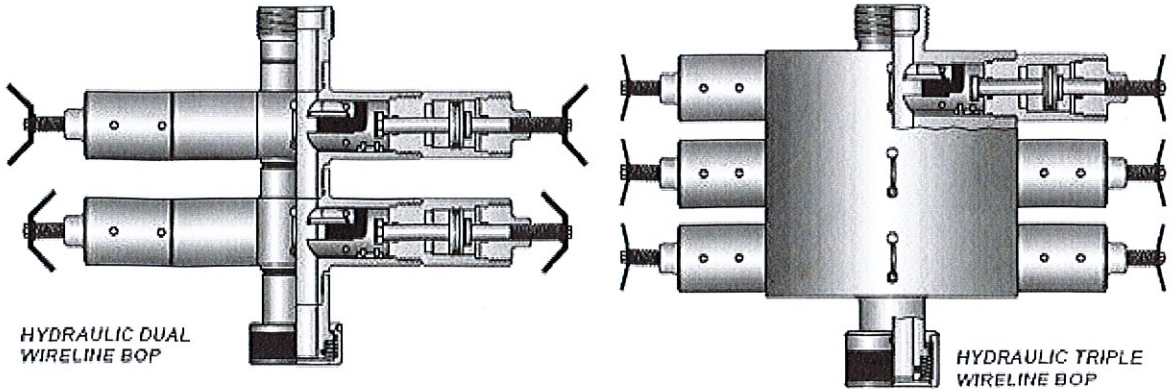


- Available size in 2ft, 3ft, 4ft, 8ft
- Have ported and non ported
- It is to provide space for the tool to be contained in under pressure when opening and ~~close~~ closing the well head

Alleyson Akin
Alleyson Akin



3. Blowout Preventer (BOP)



What is BOP

- Known the secondary barrier at slickline
 - Must always be installed at top of X-Mas Tree and at the bottom of lubricator
- (Can also wireline valve)

What is the purpose of BOP

- To hold ~~pressure~~ and isolated well pressure
- To permit the assembly of wire cutter above BOP rams and dropping it if toolstring stuck

How to operate BOP

- By using RSV and master unit
- By manually or by hydraulically

What is maintenance required for BOP

- * ~~Corrective maintenance~~ - charge O-ring, check ram condition
 - * ~~Preventive maintenance~~ - greasing, painting, washing
- (MPI)

What is safety precaution required for BOP

- Use fully PPE
- Ensure the ram if function open and close


GAZALI MEHRY
Operation Manager
Dimension Bid (M) Sdn Bhd
(East Malaysia Operation)

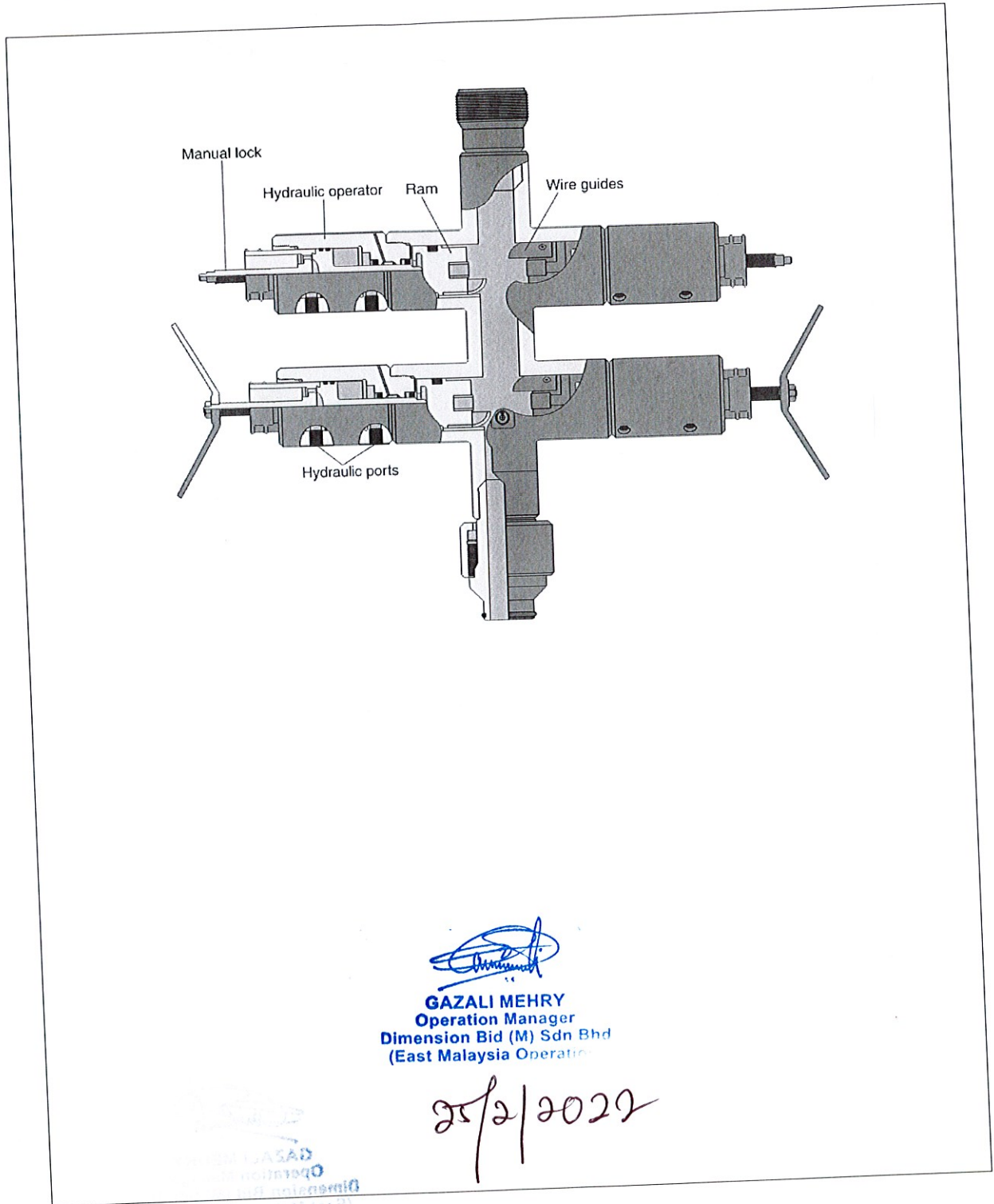
25/2/2022



What is potential hazard during handling BOP

- Back pain
- pinch point
- Drop an object

Draw & name each part of BOP



GAZALI MEHRY
Operation Manager
Dimension Bid (M) Sdn Bhd
(East Malaysia Operations)

25/2/2022

GAZALI MEHRY
Operation Manager
Dimension Bid (M) Sdn Bhd
(East Malaysia Operations)

4. X-Mas Tree

What is x-mas tree

- * It is equipment that controls the flow produced by well.
- * Vertical assembly at valves with gauges that allow for adjustment in flow control at well

What is the purpose of x-mas tree

- * Control the flow produced by well

How to operate x-mas tree

- * Manually and hydraulically

What is maintenance required for x-mas tree

- Pressure test
- Physical inspection
- Function test
- Preventive maintenance
- Corrective maintenance

What is safety precaution required for x-mas tree

- Do not overtight the valves while open or close

What is potential hazard during handling x-mas tree

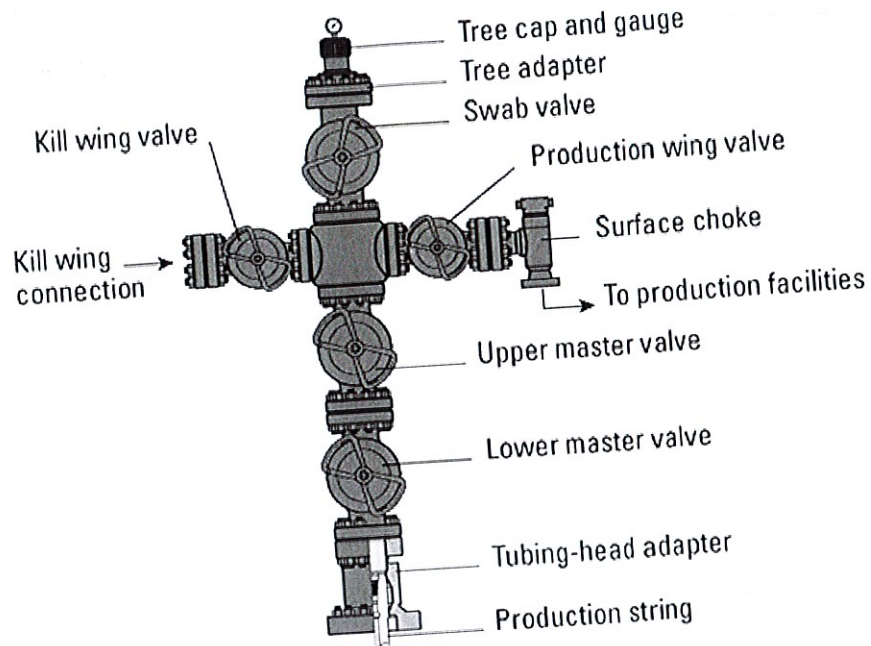
- Pinch point
- Blow out
- Do not use master valve to shut the well, use swap / killing valve


GAZALI MEHRY
Operation Manager
Dimension Bid (M) Sdn Bhd
(East Malaysia Operation)

2022
25/2/2022



Draw & name each part of x-mas tree



GAZALI MEHRY
Operation Manager
Dimension Bid (M) Sdn Bhd
(East Malaysia Operation)

25/2/2025

(Faint mirrored stamp of the signature and name)

5. Wireline Reel Skid Unit (RSU) / Winch – Single Drum and Double Drum

What is RSU

- * Equipment that build with drum to put the wire
- * Have safety device, weight indicator & depth

What is the purpose of RSU

- * To turn the wire drum to lower & rise tool string in the well via wire

How to operate RSU

- * By powerpack and hydraulic system
- * connected via hose at hydraulic between powerpack and RSU

What is maintenance required for RSU

- * check device chain
- * Drum condition & emergency break supply
- * check the condition of the break function
- * function of gauge calibrated with turning down

What is safety precaution required for RSU

- * While running RSU, make sure it running properly and be careful at breaking wire

What is potential hazard during handling RSU

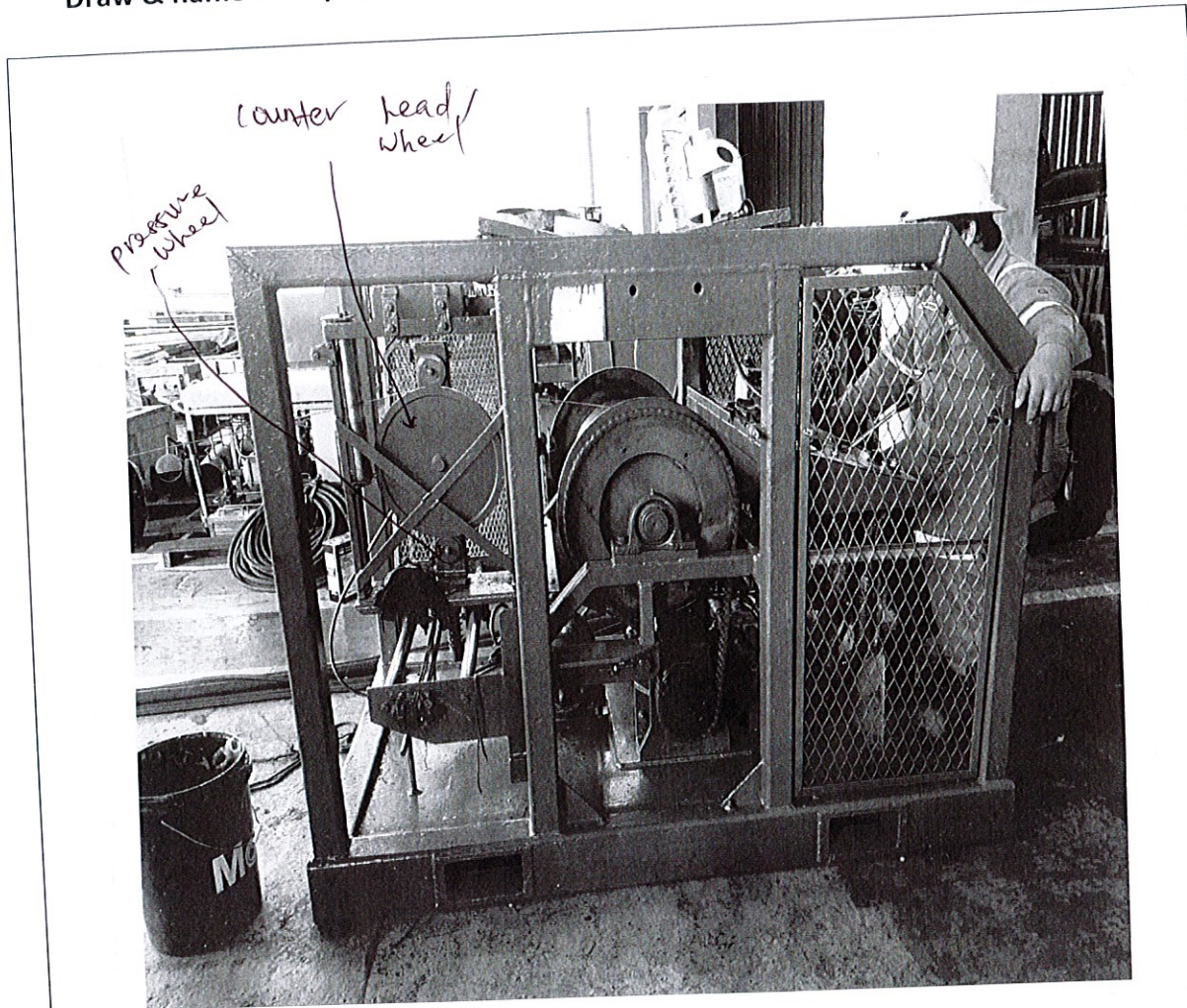
- * Wire break
- * Pinch point


GAZALI MEHRY
Operation Manager
Dimension Bid (M) Sdn Bhd
(East Malaysia Operation)

25/2/2022



Draw & name each part of RSU



• Working pressure 2200 psi to 2500 psi

BASIC control

- 1) Drum brake
- 2) Direction level
- 3) Hydraulic control valve
- 4) weight indicator
- 5) odometer

GAZALI MEHRY
 Operation Manager
 Dimension Bid (M) Sdn Bhd
 (East Malaysia Operation)


GAZALI MEHRY
 Operation Manager
 Dimension Bid (M) Sdn Bhd
 (East Malaysia Operation)

25/2/2019

6. Odometer

What is Odometer

* Measure the depth as counter device

What is the purpose of Odometer

* To indicate the depth of slickline toolstring hanging in a tubing string in feet or meters

How to operate Odometer

* Connect the hose to right angle drive and put the odometer for RW for monitoring

What is maintenance required for Odometer

* Check the counter wheel is free to rotate

* Check the direction of rotation

* Check the odometer is fully engaged after zeroing

* Odometer is freely to rotate due the rotation of system

What is safety precaution required for Odometer

* wear fully PPE

What is potential hazard during handling Odometer

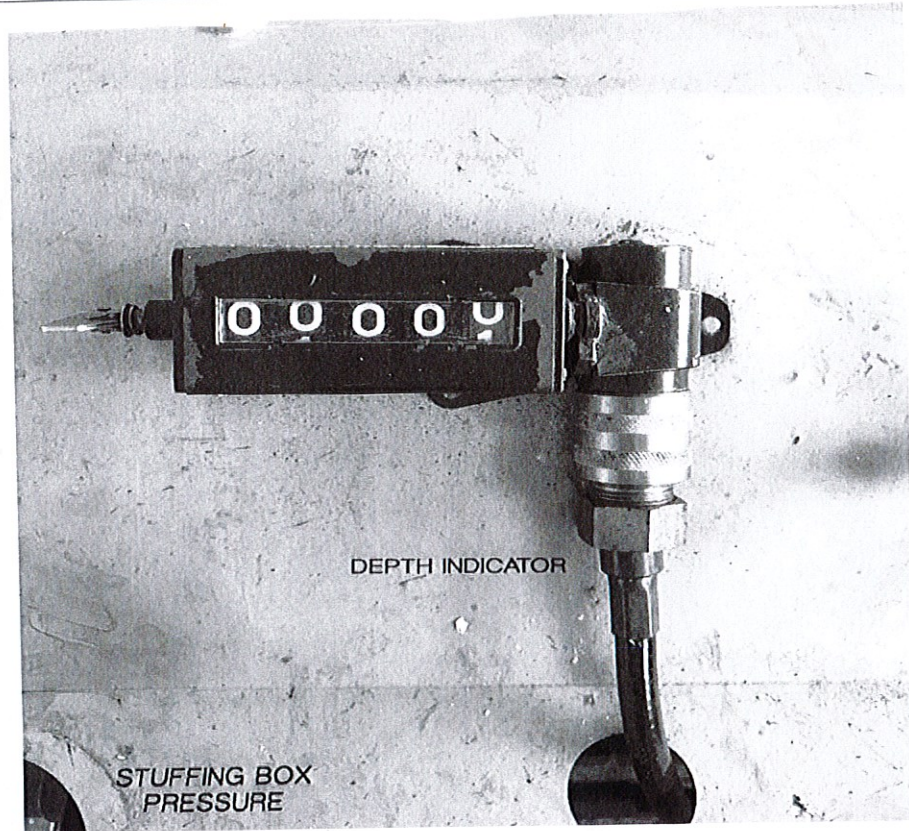
* Sharp edges


GAZALI MEHRY
Operation Manager
Dimension Bid (M) Sdn Bhd
(East Malaysia Operation)

25/2/2022




Draw & name each part of Odometer



- known as depth indicator or
Depth measuring device


GAZALI MEHRY
Operation Manager
Dimension Bid (M) Sdn Bhd
(East Malaysia Operation)

25/2/2022


GAZALI MEHRY
Operation Manager
Dimension Bid (M) Sdn Bhd
(East Malaysia Operation)

7. Weight indicator (200 lbs and 4000 lbs)

What is Weight Indicator

- It is device to measured the total weight while ~~hanging~~ hung in

What is the purpose of Weight Indicator

- To determine the total weight of tools hung in tubing string

How to operate Weight Indicator

- connect to the load cell using rubber hose filled with hydraulic oil
- connected to the hoist pulley and xmas tree forming 90° each side

What is maintenance required for Weight Indicator

- Bleed out the pressure in weight indicator by using ~~the~~ fluid oil
- check condition at the gauge and hose
- Check condition at the twistor

What is safety precaution required for Weight Indicator

- Handle with careful
- Use ~~rig~~ correct weight indicator with correct wire tension
- watch out for the gauge from breaking

What is potential hazard during handling Weight Indicator

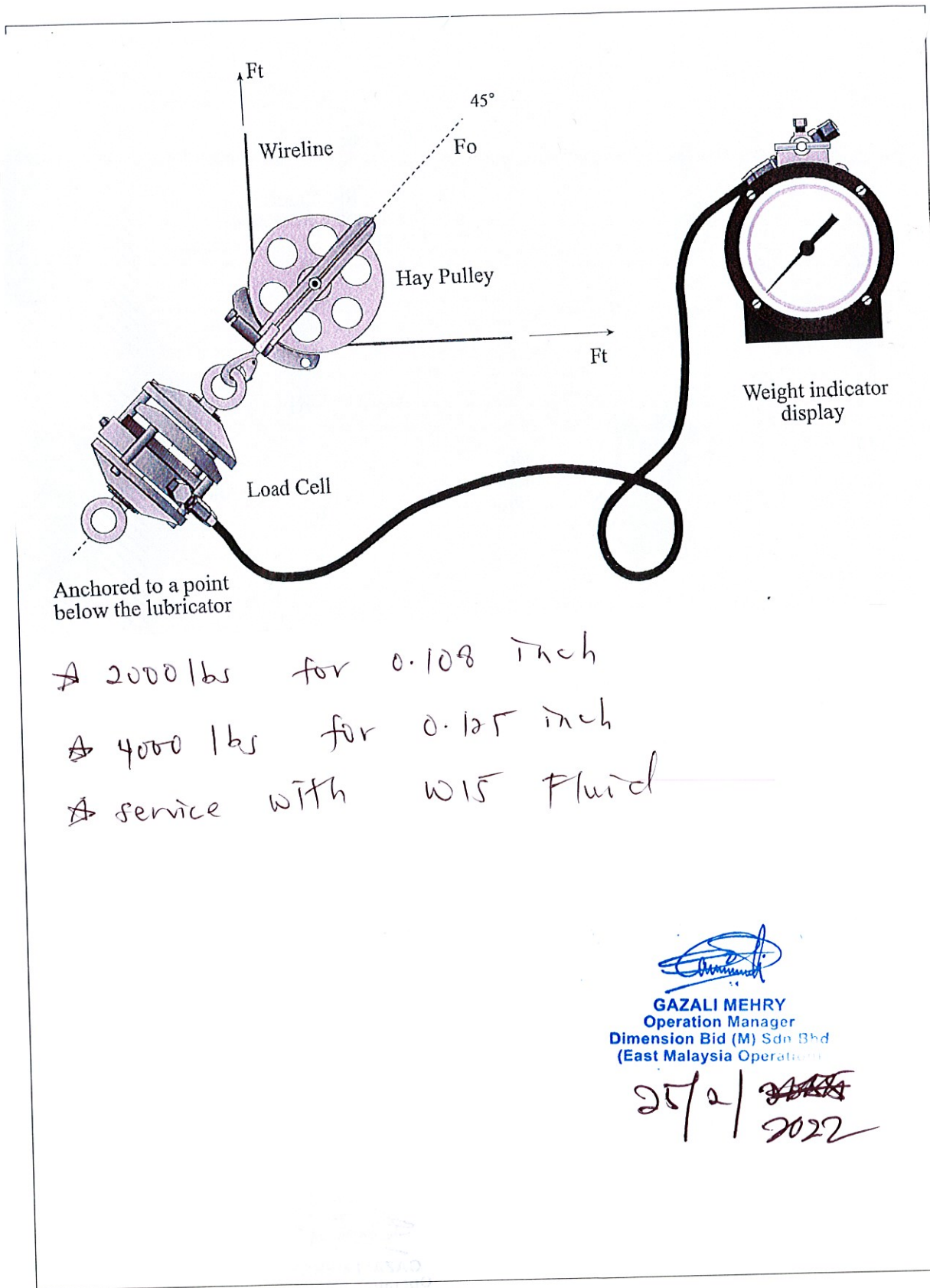
- Back pain
- Drop object


GAZALI MEHRY
Operation Manager
Dimension Bid (M) Sdn Bhd
(East Malaysia Operation)

25/2/22



Draw & name each part of Weight Indicator



* 2000 lbs for 0.108 inch
 * 4000 lbs for 0.125 inch
 * service with W15 Fluid

GAZALI MEHRY
Operation Manager
Dimension Bid (M) Sdn Bhd
(East Malaysia Operations)

25/2/2022



8. Spooling Device

What is Spooling Device

The device to spool in $\frac{1}{2}$ cut wire

What is the purpose of Spooling Device

- To control tension at the wire while spool in and out
- To operate the spooling process by hold the reel

How to operate Spooling Device

- Connect spooling device with ~~power~~ power pack
- Make sure there not overlapping
- Brake lever is to control the line of tension

What is maintenance required for Spooling Device

- Hydraulic system
- wheel condition
- fitting hose

What is safety precaution required for Spooling Device

- Drum in safe and good condition
- Brake in good condition and function

What is potential hazard during handling Spooling Device

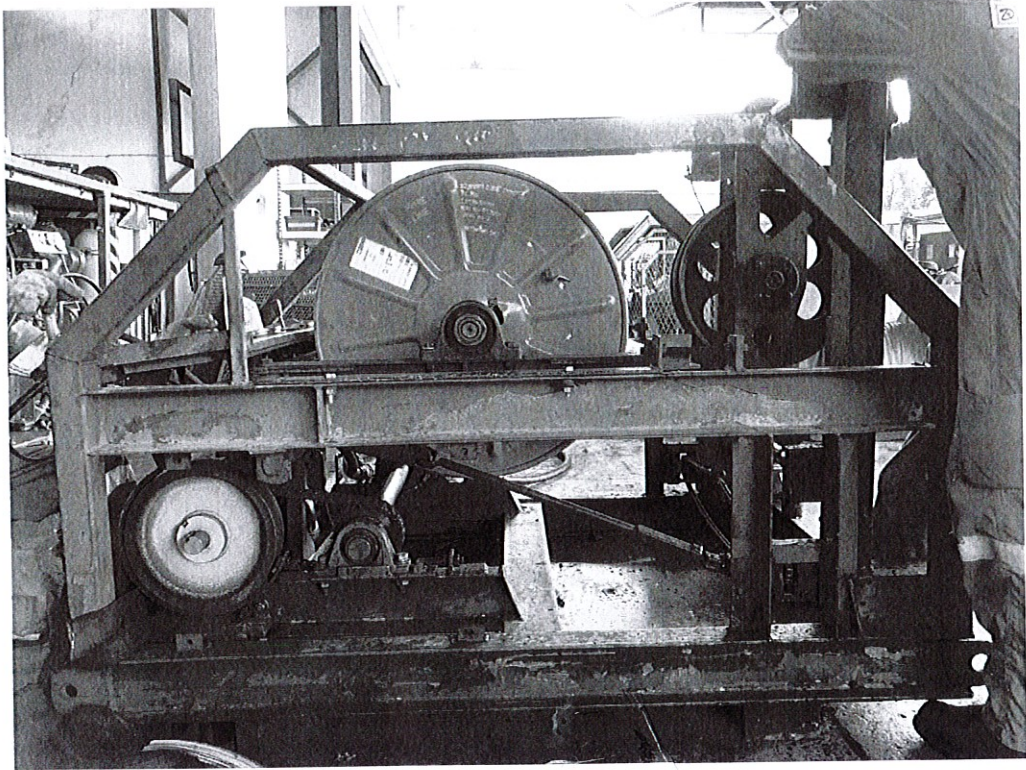
- pinch point
- wire parted
- Breaking wire

GAZALI MEHRY
Operation Manager
Dimension Bid (M) Sdn Bhd
(East Malaysia Operation)

1/8/2022



Draw & name each part of Spooling Device




GAZALI MEHRY
Operation Manager
Dimension Bid (M) Sdn Bhd
(East Malaysia Operation)

1/3/2022



9. Control Panel

What is Control Panel

- Device to control BOP, safety valve and other PCE equipment

What is the purpose of Control Panel

- Control the pressure needed in ~~operation~~ operation process

How to operate Control Panel

- connect the control panel to the equipment
- Air supply connect with the control panel
- control the air regulator by supply needed pressure to equipment

What is maintenance required for Control Panel

- The fluid level and hydraulic oil
- flow line in good condition
- gauge is need to ~~calib~~ re calibrate

What is safety precaution required for Control Panel

- use safety pin and wipcheck while connect hose
- Beware at over pressure
- proper connecting the hose with right place

What is potential hazard during handling Control Panel

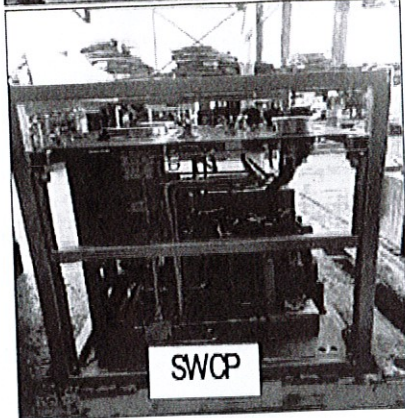
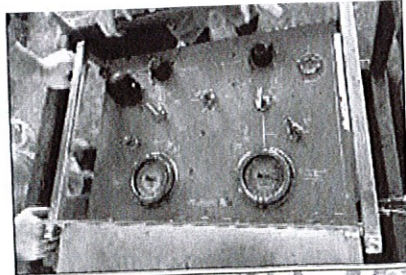
- Back pain
- loose connection
- Blowout pressure

GAZALI MEHRY
Operation Manager
Dimension Bid (M) Sdn Bhd
(East Malaysia Operation)

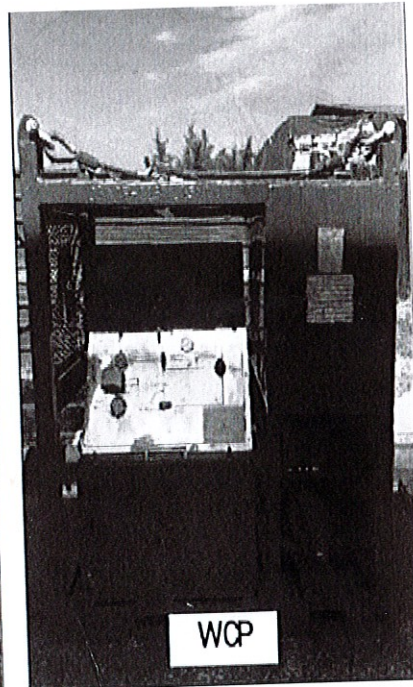
1/3/2022



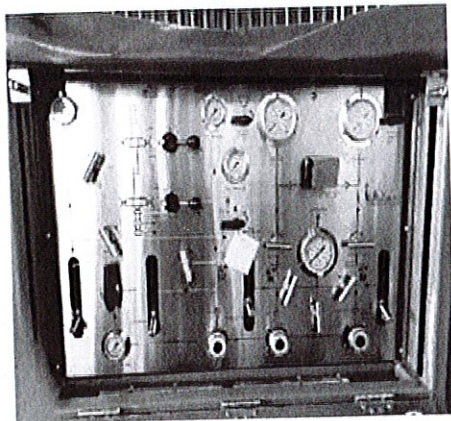
Draw & name each part of Control Panel



SWCP



WCP



CP




GAZALI MEHRY
Operation Manager
Dimension Bid (M) Sdn Bhd
(East Malaysia Operation)

1/3/2022

10. Huskel Drum

What is Huskel Drum

- The device to control that volume needed to pump

What is the purpose of Huskel Drum

- to drive the hydraulic or water in control panel allow the hydraulic piston to reciprocate without passing fluid into drive

How to operate Huskel Drum

- Allow the hydraulic piston to reciprocate without passing fluid into drive
- control form knob or regulator at the panel

What is maintenance required for Huskel Drum

- check the piston
- check of the valve
- service huskel pump

What is safety precaution required for Huskel Drum

- ~~check~~ condition of the valve

What is potential hazard during handling Huskel Drum

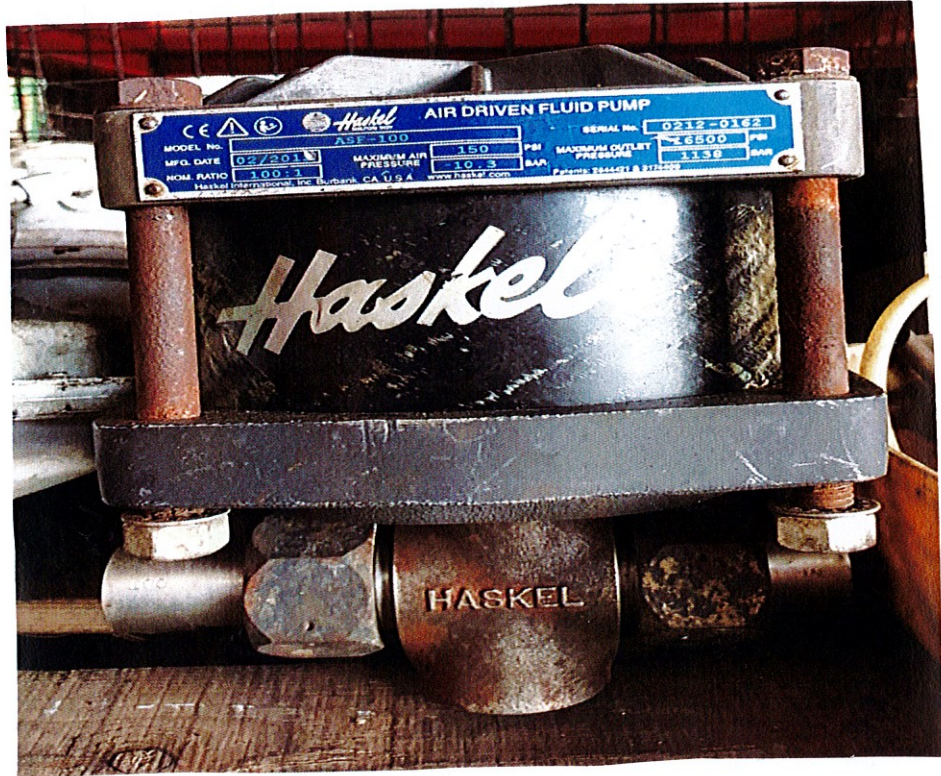
- Pinch point


GAZALI MEHRY
Operation Manager
Dimension Bid (M) Sdn Bhd
(East Malaysia Operation)

1/8/2022



Draw & name each part of Huskel Drum



GAZALI MEHRY
Operation Manager
Dimension Bid (M) Sdn Bhd
(East Malaysia Operation)

1/3/2022

11. Power Pack (Electrical & Diesel)

What is Power Pack

- Equipment that supply and generated power to MIST and RSV
- 2Dne 2 ~~S~~ equipment ✓

What is the purpose of Power Pack

- To supply driving hydraulic power to equipment (Pump and others) ✓

How to operate Power Pack

- By operating several valves that can be adjust speed, power and rotation of drum ✓

What is maintenance required for Power Pack

- OIL level
- change filter
- Re calibrate the gauge
- change hose fitting ✓
- change fan belt

What is safety precaution required for Power Pack

- Be careful with moving fan
- wearing ear ~~#~~ plug while operating power pack
- prevent any spark that can cause fire ✓

What is potential hazard during handling Power Pack

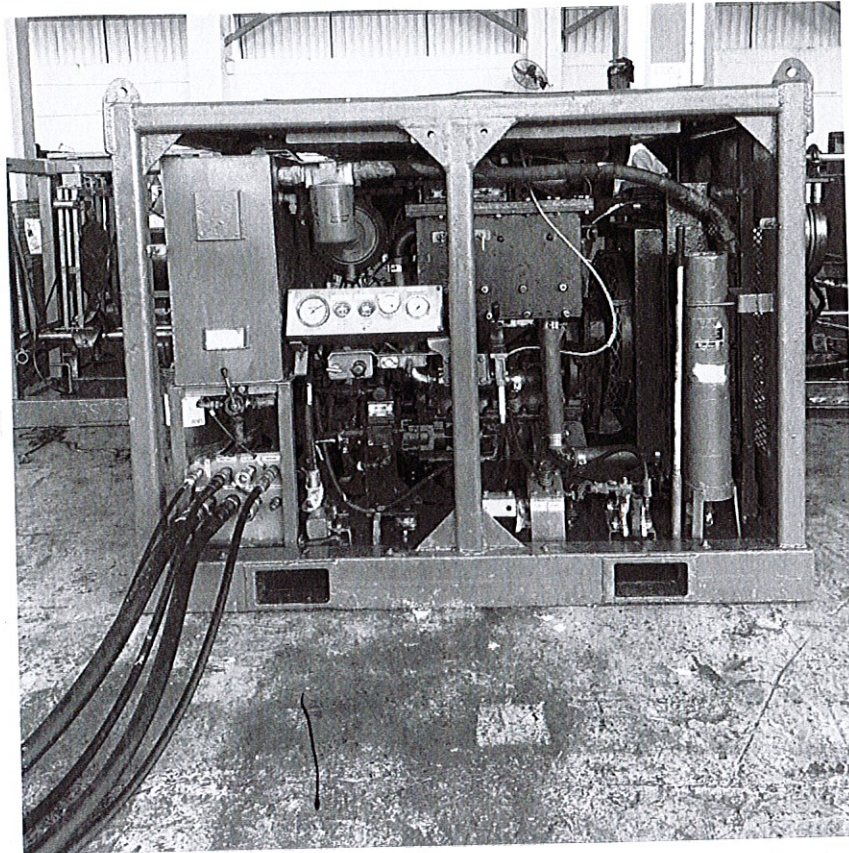
- Pinch point ✓
- head injury
- Back pain


GAZALI MEHRY
Operation Manager
Dimension Bid (M) Sdn Bhd
(East Malaysia Operation)

1/3/2022



Draw & name each part of Power Pack



- Working pressure - 2000 psi
- Emergency shutdown - coolant 100 °C
- Exhaust 200 °C

GAZALI MEHRY
Operation Manager
Dimension Bid (M) Sdn Bhd
(East Malaysia Operation)

1/8/22



12. Air Compressor

What is Air Compressor

The device that convert power into potential energy stored in pressurized air ✓

What is the purpose of Air Compressor

To supply compressed air to unit needed ✓

How to operate Air Compressor

Usually with spring starter
Start by rotate the wheel clockwise till indicator turn red
Release spring to start engine ✓

What is maintenance required for Air Compressor

change oil compressor
clean the fan belt
Fuel pump need to be care from water ✓

What is safety precaution required for Air Compressor

Make sure the air compressor not overheat
safety valve fully functioning
No leak at the hose ✓

What is potential hazard during handling Air Compressor

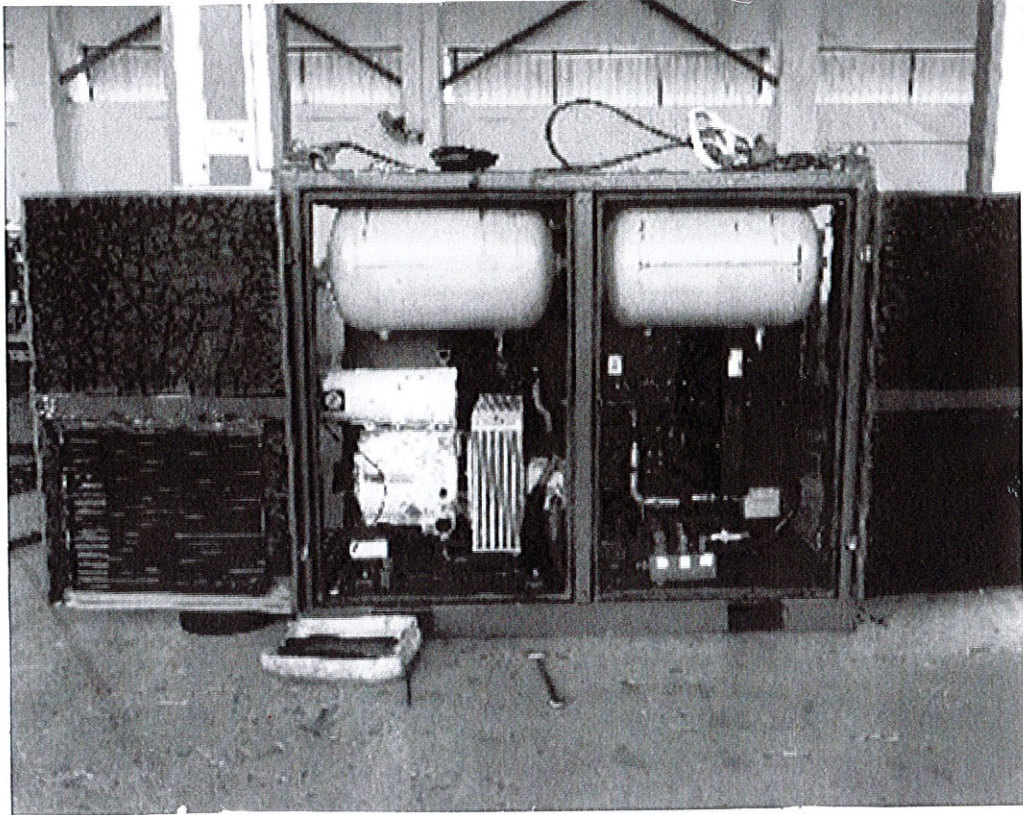
Pinch point
Hot surface ✓


GAZALI MEHRY
Operation Manager
Dimension Bid (M) Sdn Bhd
(East Malaysia Operation)

1/3/22



Draw & name each part of Air Compressor



- ★ spring starter
- ★ working pressure 100 psi to 130 psi
- ★ zone 2 certified


GAZALI MEHRY
Operation Manager
Dimension Bid (M) Sdn Bhd
(East Malaysia Operation)

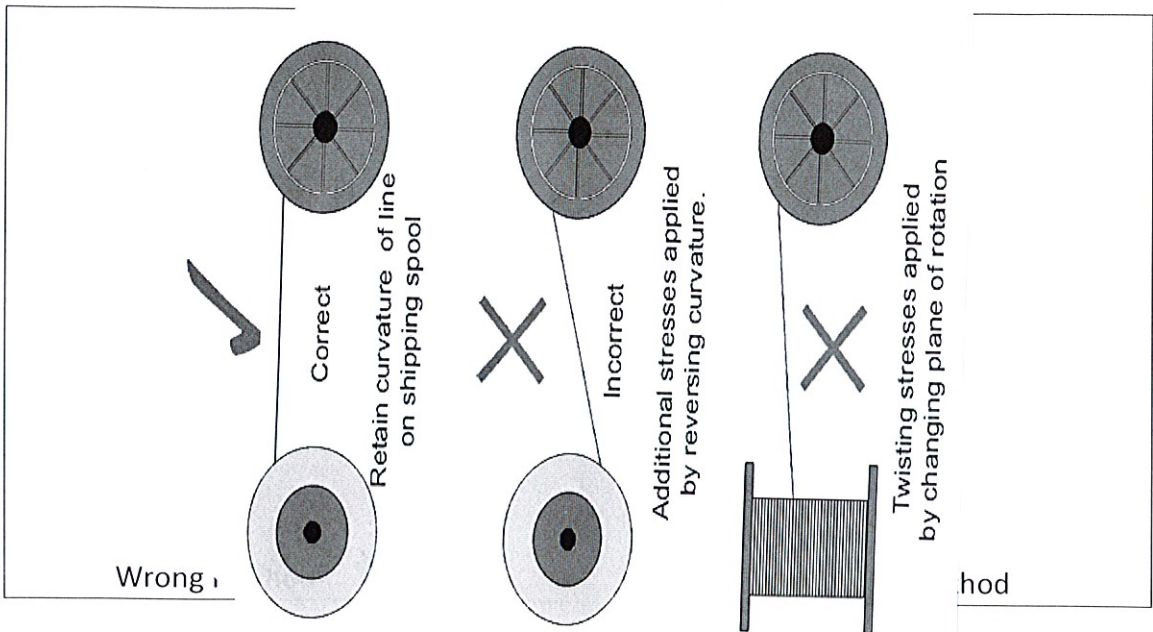
1/3/2022

13. Drum

What is the purpose of Drum

- device that place the wire ✓

Do the right and wrong wire arrangement from drum to hay pulley



What is maintenance required for Drum

- check the bearing condition
- check the condition of drum ✓

What is safety precaution required for Drum

- Use tagline or push pull stick when moving drum
- Use forklift or lifting equipment to move ✓

What is potential hazard during handling Drum

- pinch point
- Back injury ✓

[Signature]
GAZALI MEHRY
Operation Manager
Dimension Bid (M) Sdn Bhd
(East Malaysia Operation)