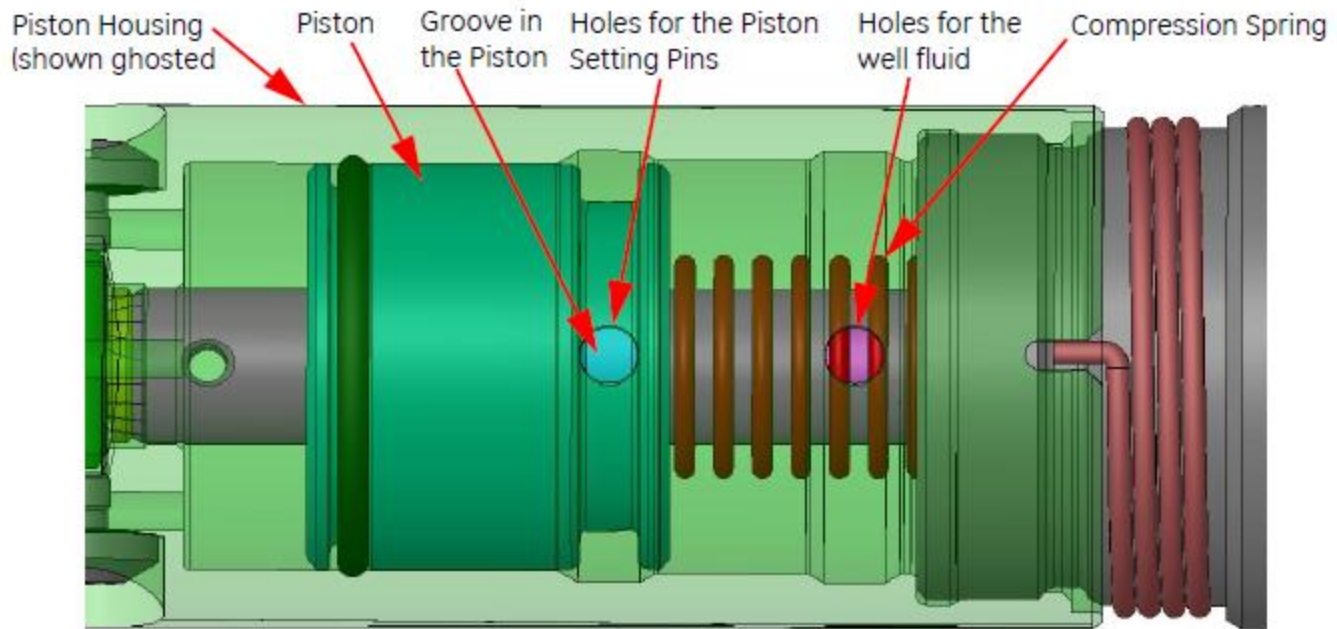


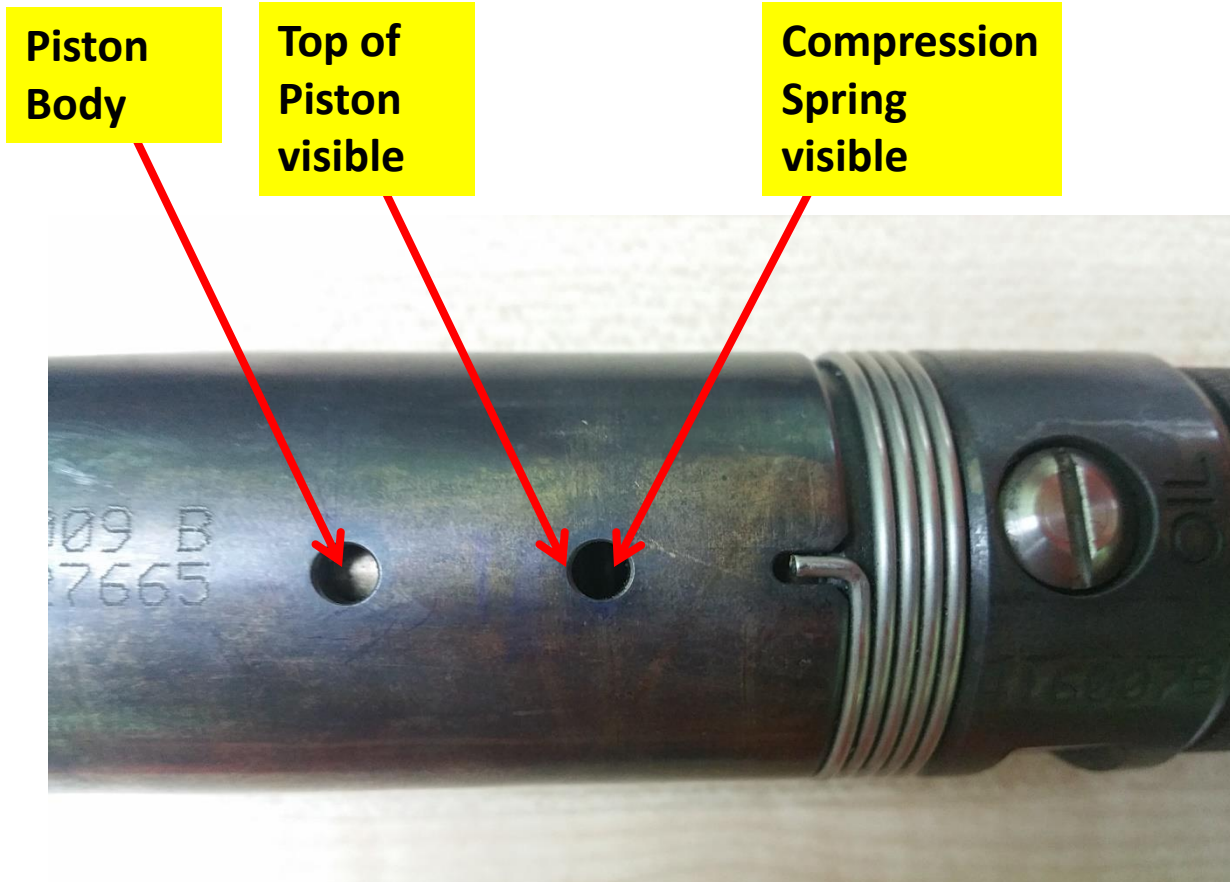
Noise Tool Quick Guide

LUQMAN NORHALIM
FIELD ENGINEER
DIMENSION BID



Correct position for the piston

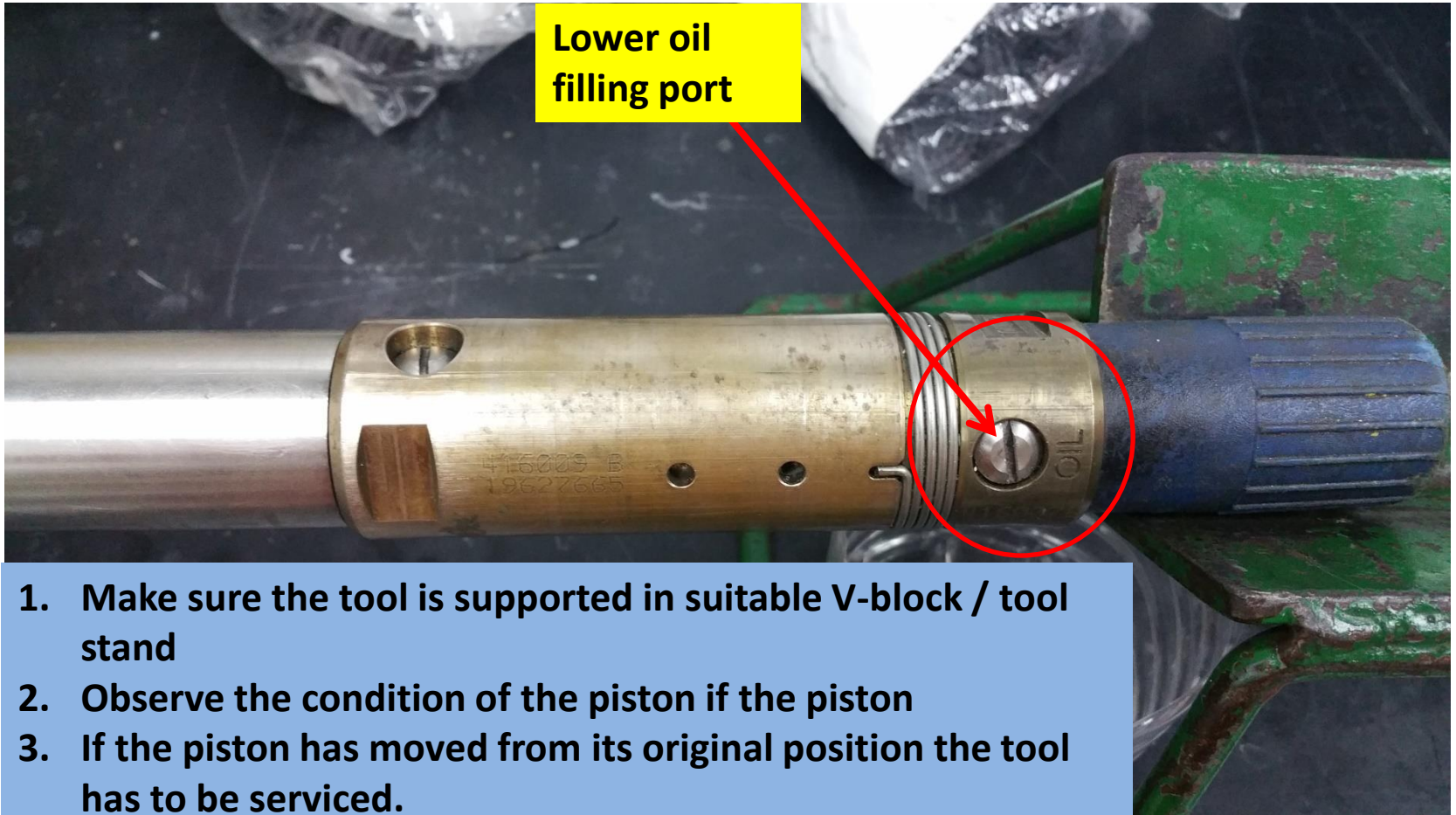




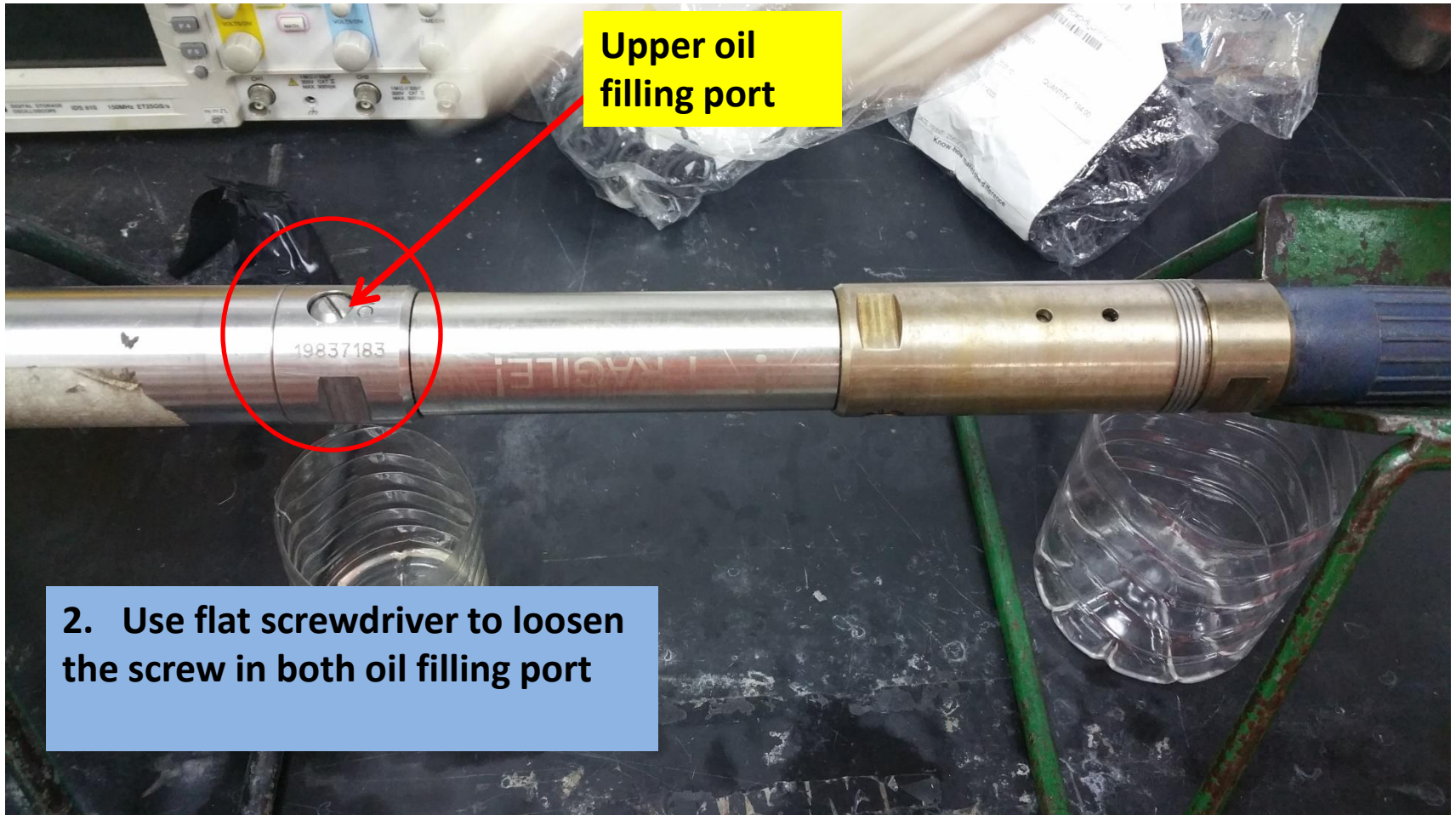
EXAMPLE OF NTO NEED TO BE SERVICED



EXAMPLE OF NTO NEED TO BE SERVICED

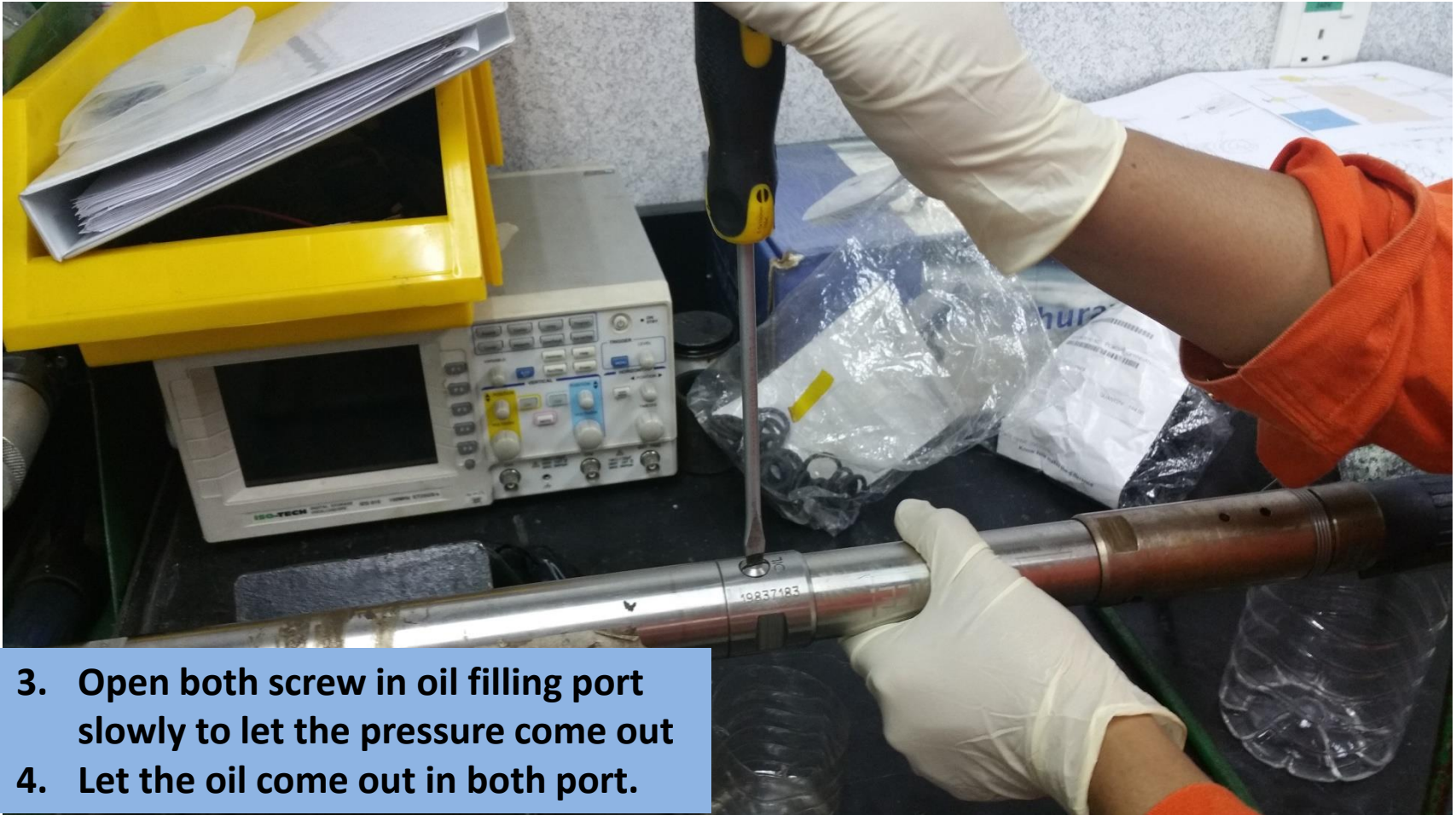


1. Make sure the tool is supported in suitable V-block / tool stand
2. Observe the condition of the piston if the piston
3. If the piston has moved from its original position the tool has to be serviced.



Upper oil filling port

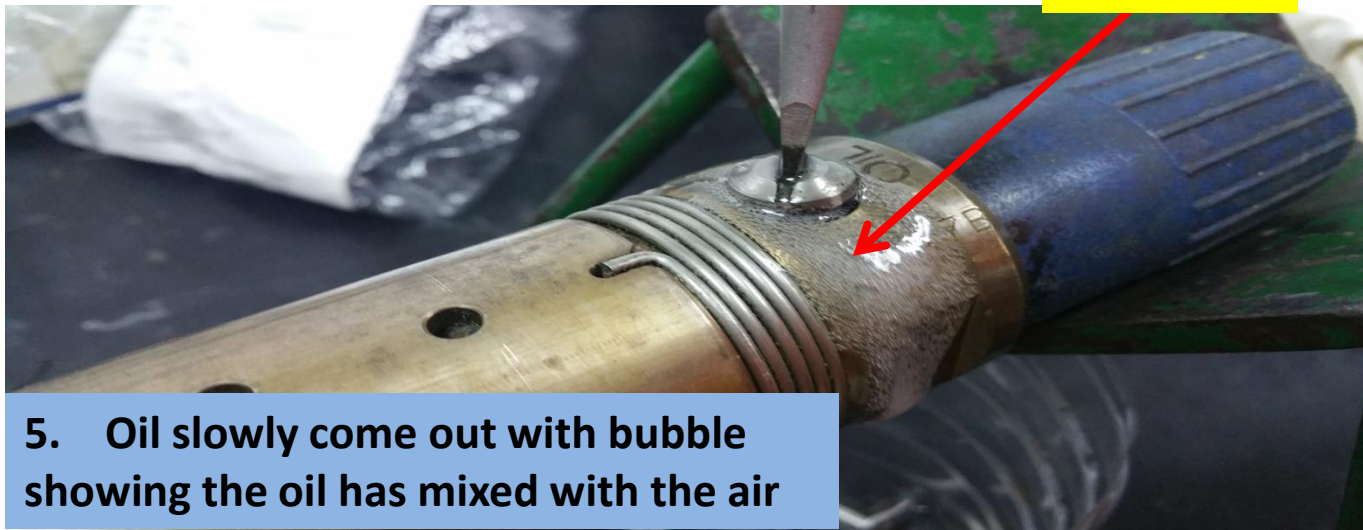
2. Use flat screwdriver to loosen the screw in both oil filling port



3. Open both screw in oil filling port slowly to let the pressure come out
4. Let the oil come out in both port.



Oil with bubble



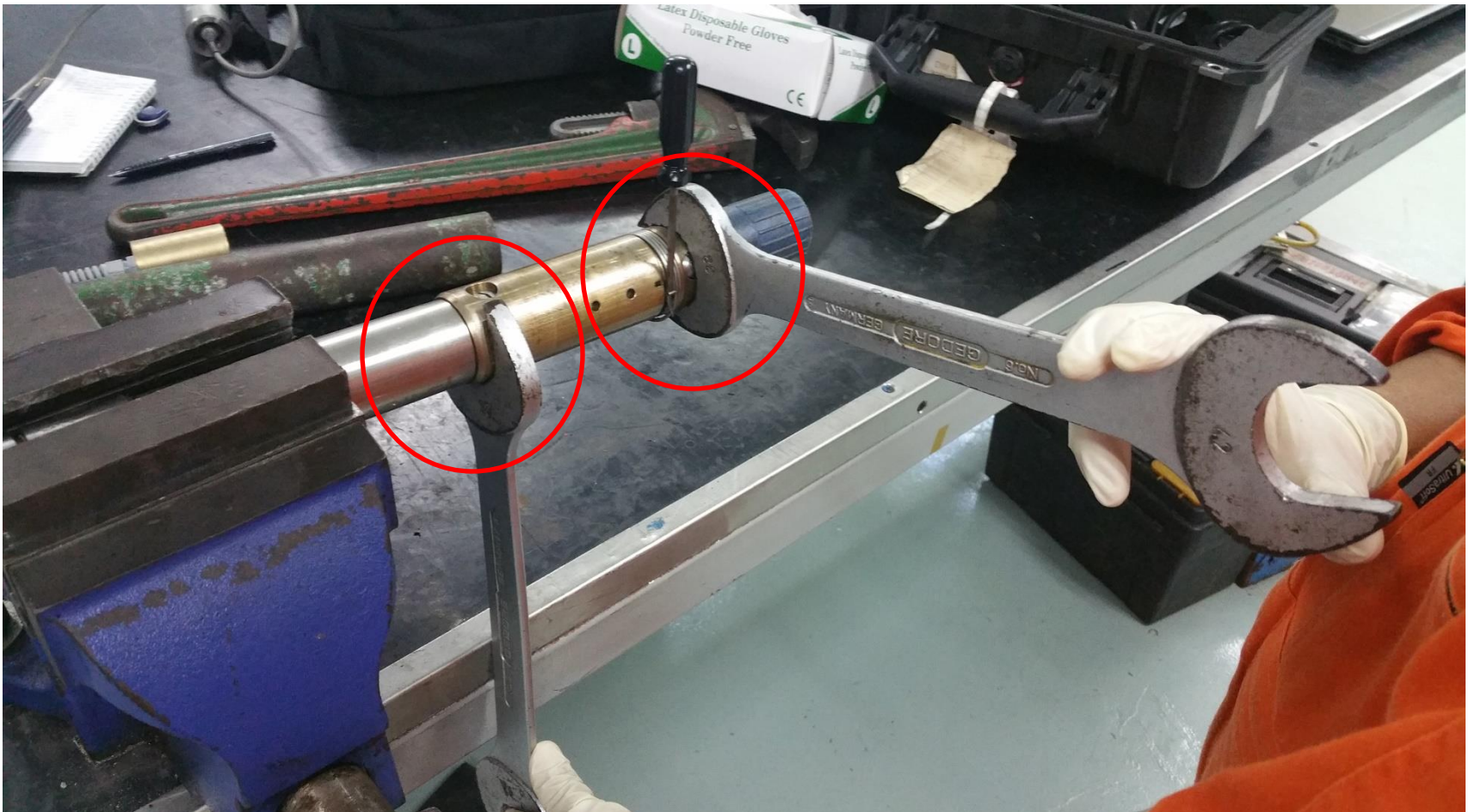
5. Oil slowly come out with bubble showing the oil has mixed with the air



6. Use two 38mm spanners (wrenches) to release Pressure housing from the sensor section assembly
7. Put one spanner on mandrel and one at the electronic housing.
8. Separate electronic housing and sensor section slowly to release unwanted trapped pressure



8. Make sure the internal pressure has been released completely.
9. Lift the tang of the locking spring from the slot. Make sure the tang remains out of the slot

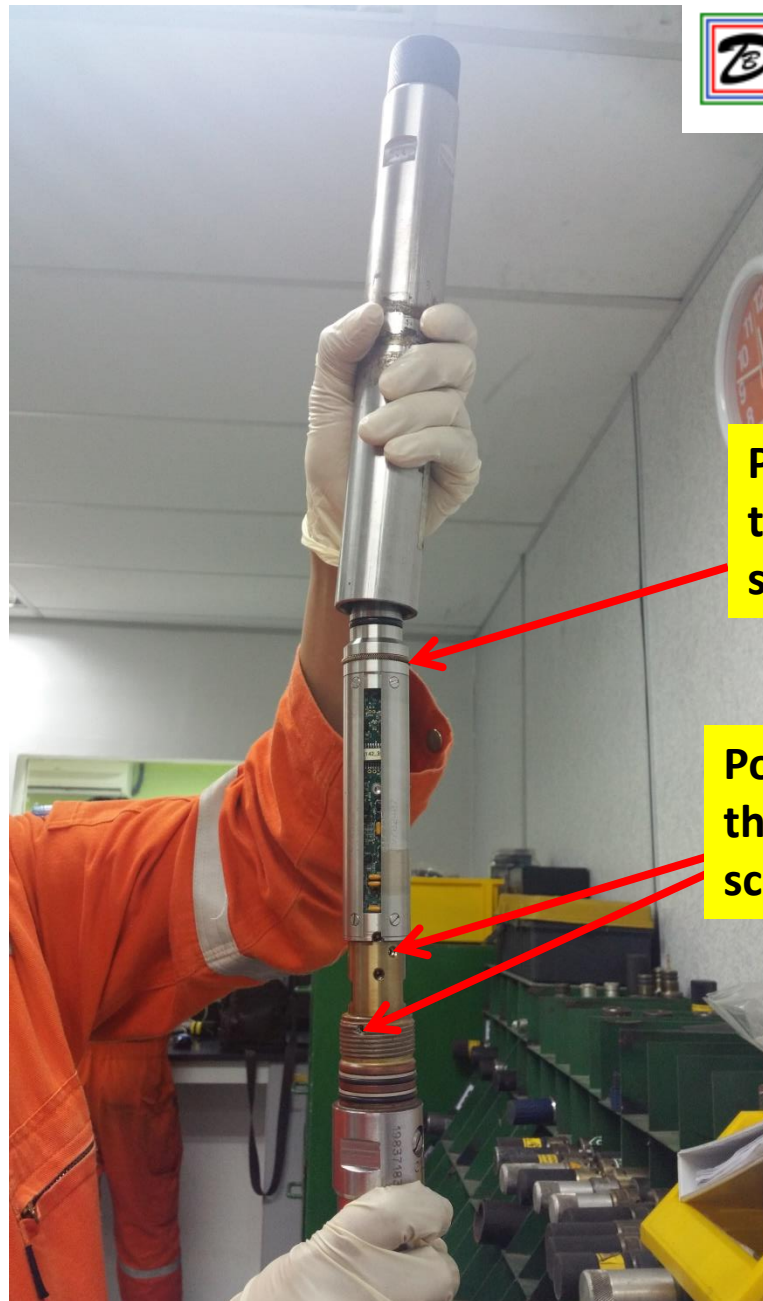


10. Use two 38mm spanners to remove and retain the bottom adapter from piston housing. Make sure the tang of the locking spring is kept out of the slot as the bottom adapter is removed. (DO NOT use as spanner on the Mandrel)



**Position of
the contact
spring**

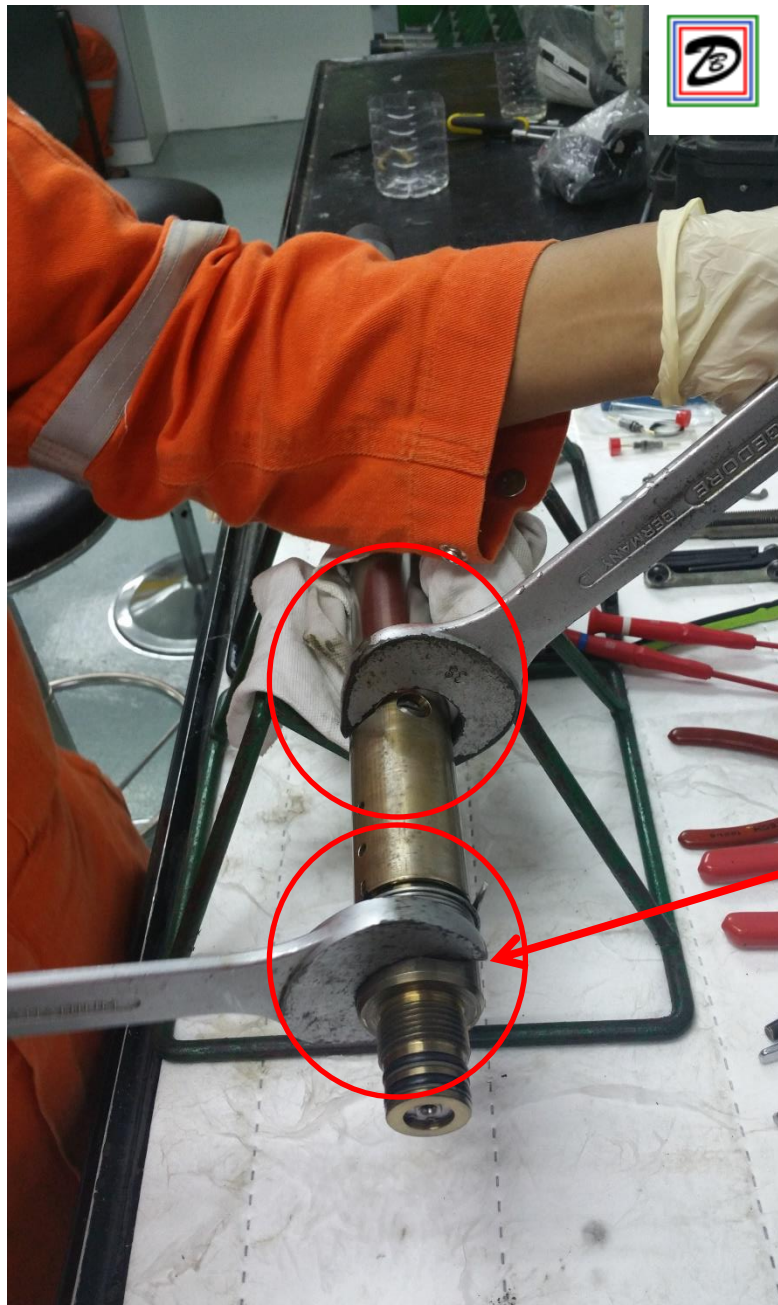
- 11. Separate electronic housing and sensor section slowly.**
- 12. Be careful during separate the electronic housing due there is canted contact spring inside the housing.**



**Position of
the contact
spring**

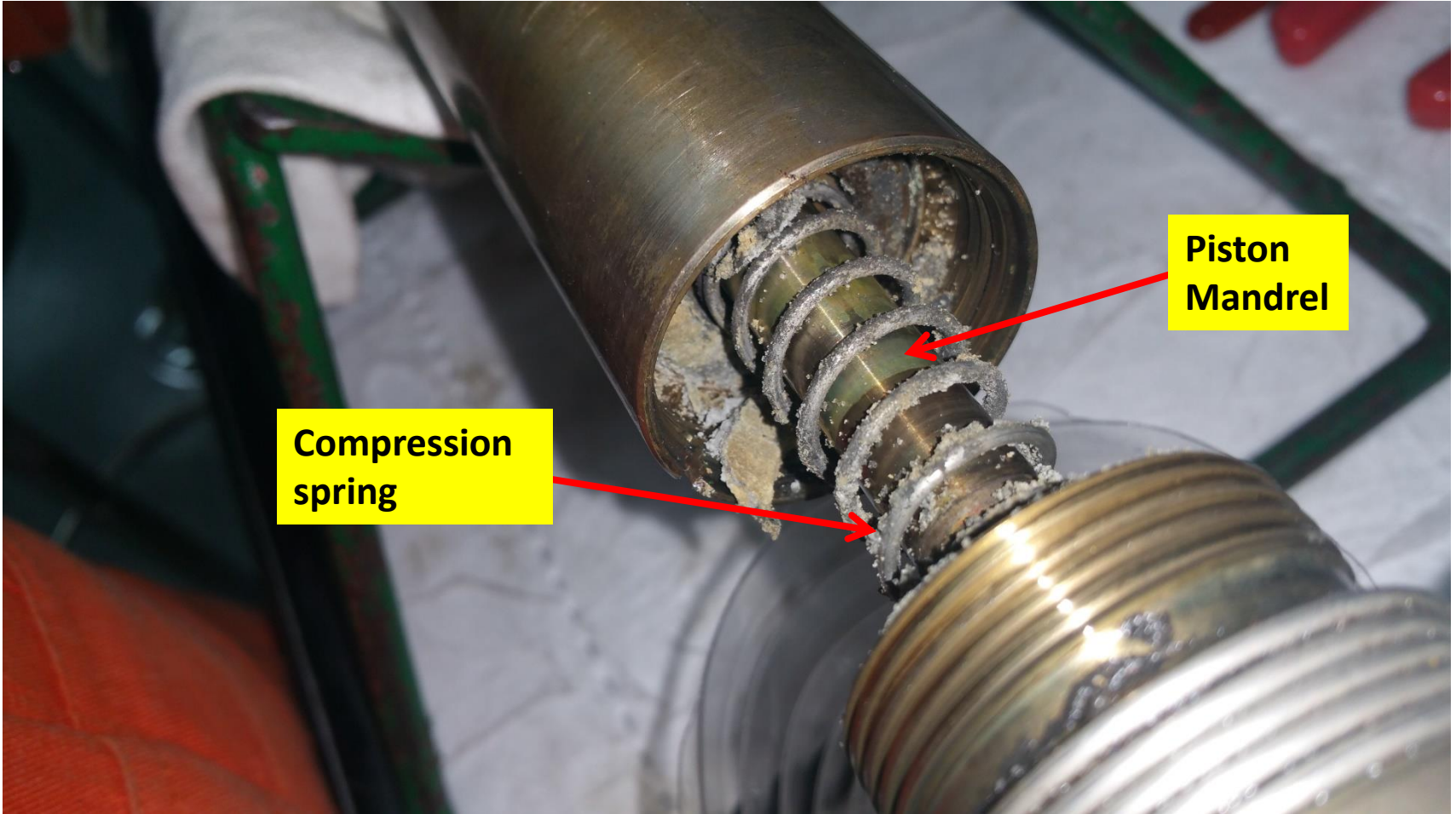
**Position of
the grub
screw**

13. Physical check the condition of the Skt Hd Grub Screw. Tighten the screw.



**Bottom
Adapter**

14. Separate the sensor section and the bottom adapter.

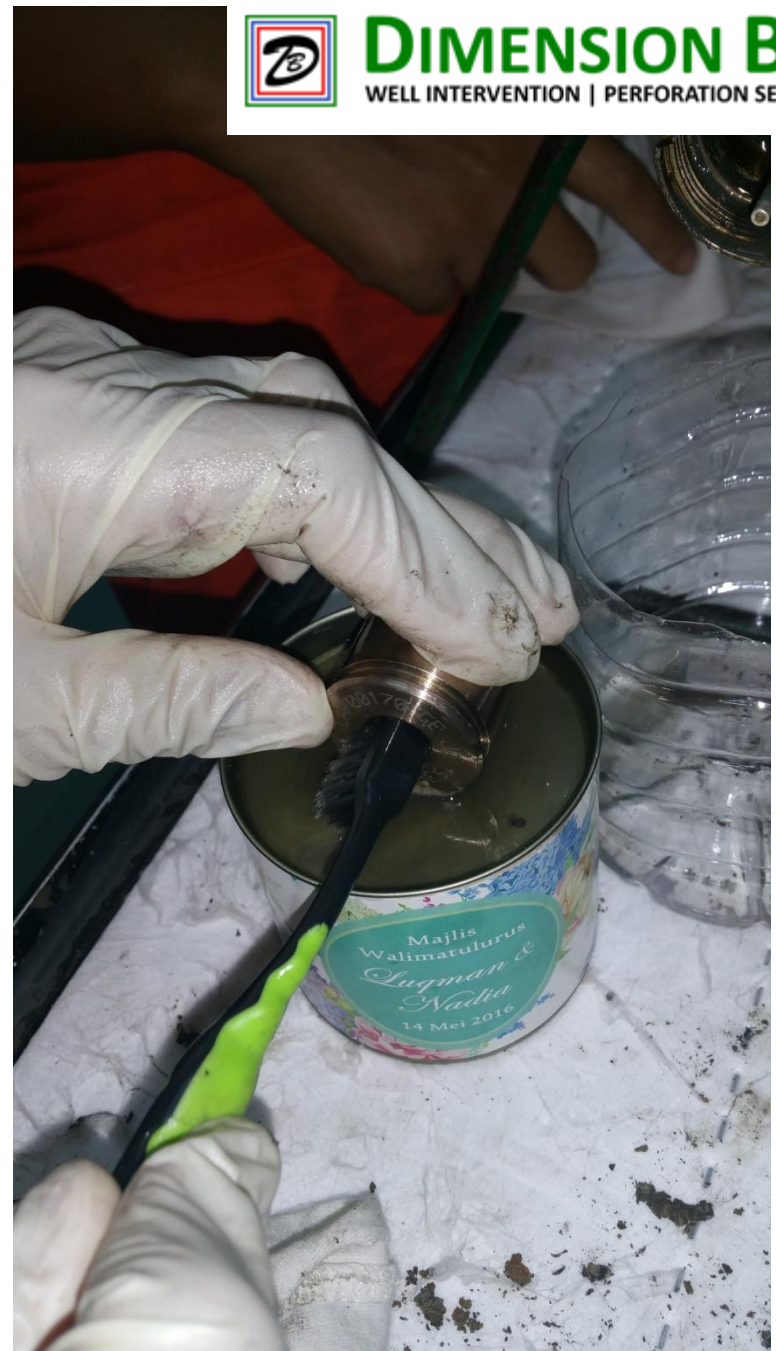


**Piston
Mandrel**

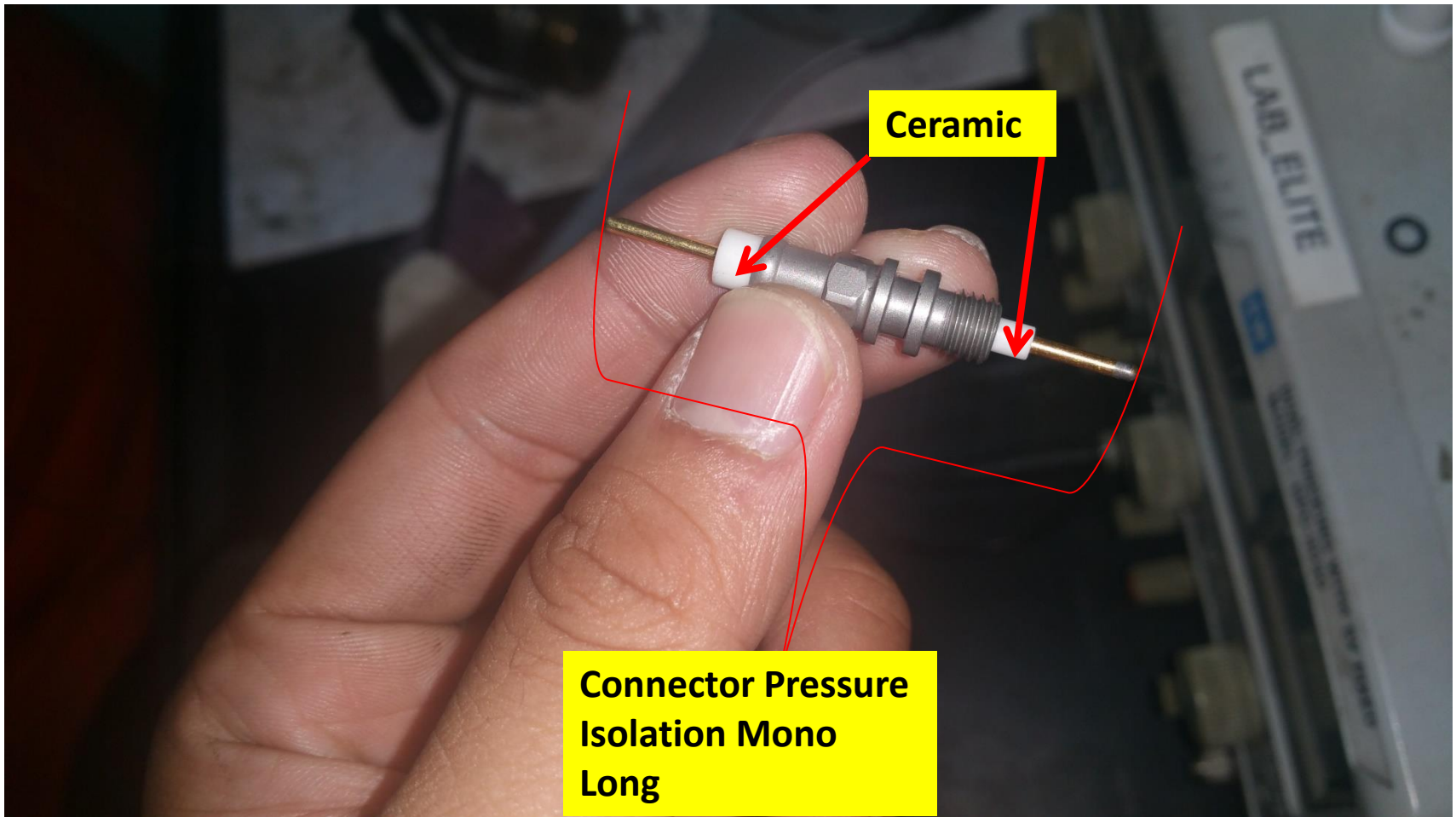
**Compression
spring**



15. Take out the compression spring from the piston mandrel.
16. Clean any debris and dirt.



DIMENSION BID
WELL INTERVENTION | PERFORATION SERVICES



17. Inspect physical condition of the ceramic if the ceramic was damaged it should be replaced with the new one



**Bottom
Adapter**

**Connector Pressure
Isolation Mono
Long**

**Piston
Mandrel**

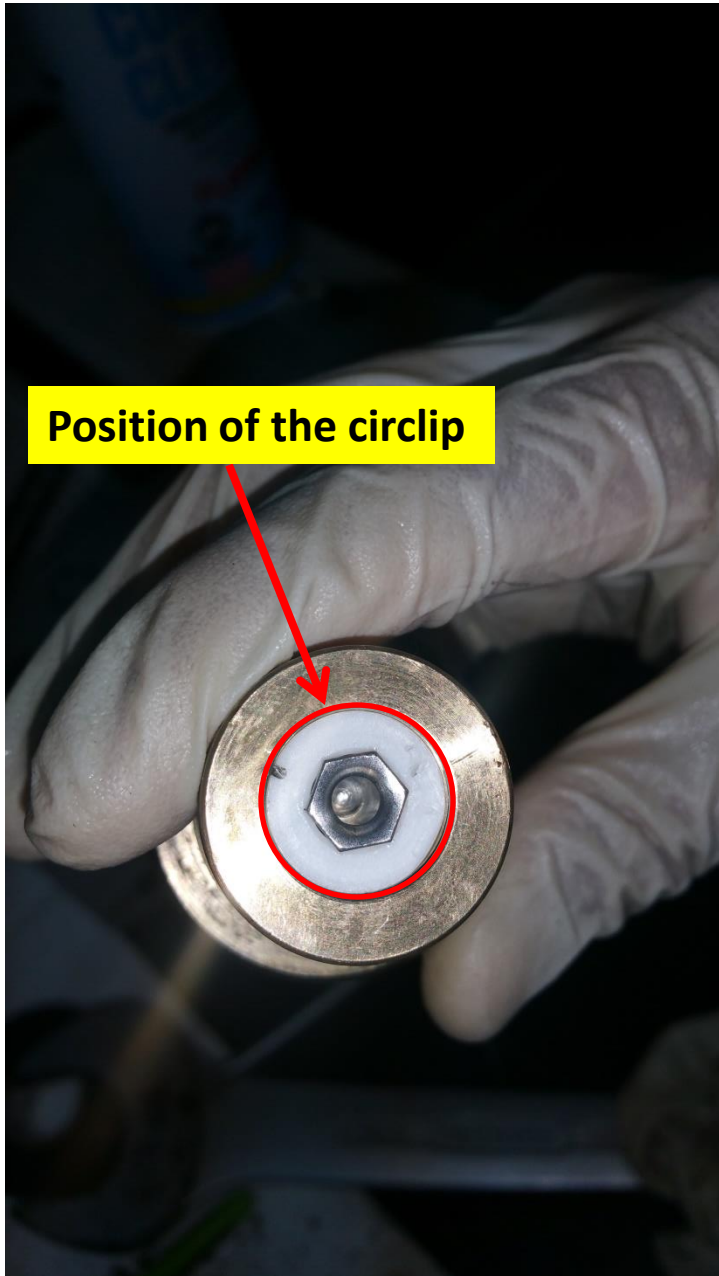
18. After clean all the spares. Install the spares one by one as per procedure.



**Circlip will hold the
Assy Lower
Connector.**



18. Insert Assy Lower connector as per in the photo (Position of the Assy Lower Connector)



Position of the circlip



Insert PIH at the back of the bottom adapter.



19. Tighten PIH inside the bottom adapter.



DIMENSION BID
WELL INTERVENTION | PERFORATION SERVICES



20. Insert piston as per photo shown.



We need to make sure the groove of the piston is parallel with the holes piston setting pin.

21. Insert the Piston and make sure the groove of the piston is parallel with the piston setting pin hole.
22. Put something to hold the grooves from moving.



23. Insert piston mandrel.



23. Insert spring compression

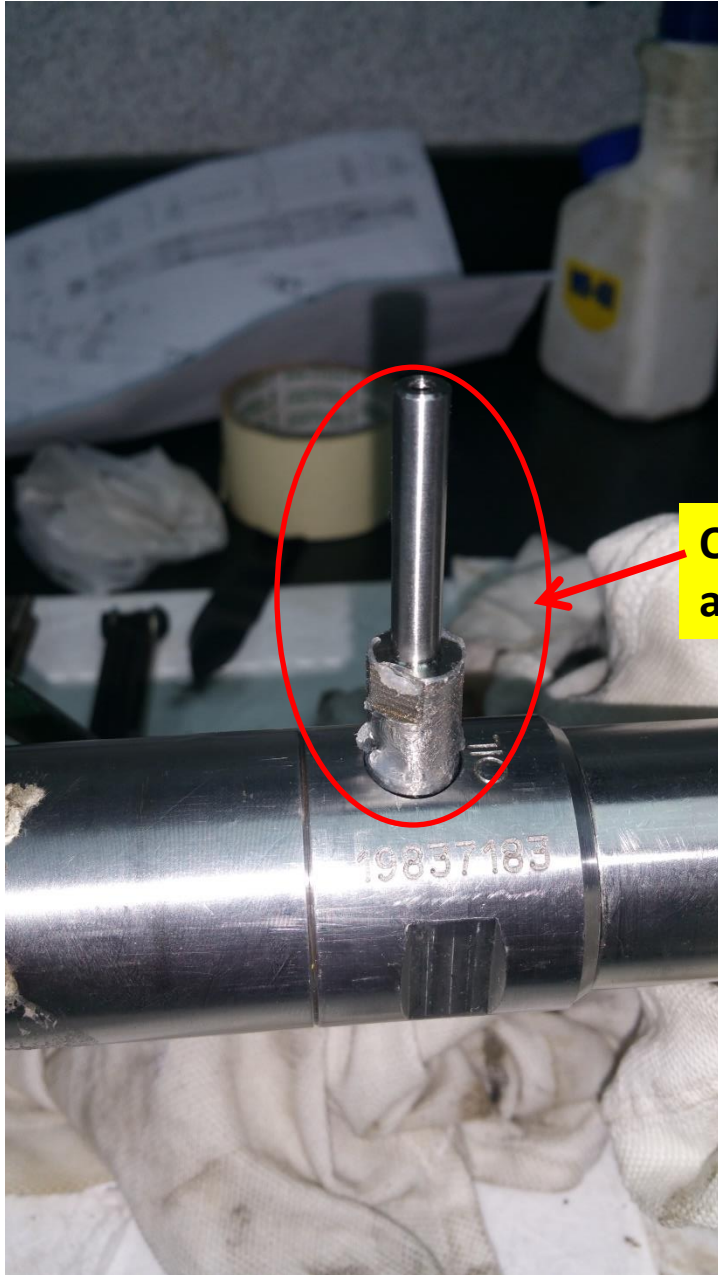
24. Check the condition of the O-ring at the piston mandrel prior to insert the spring.



25. Install bottom adapter.

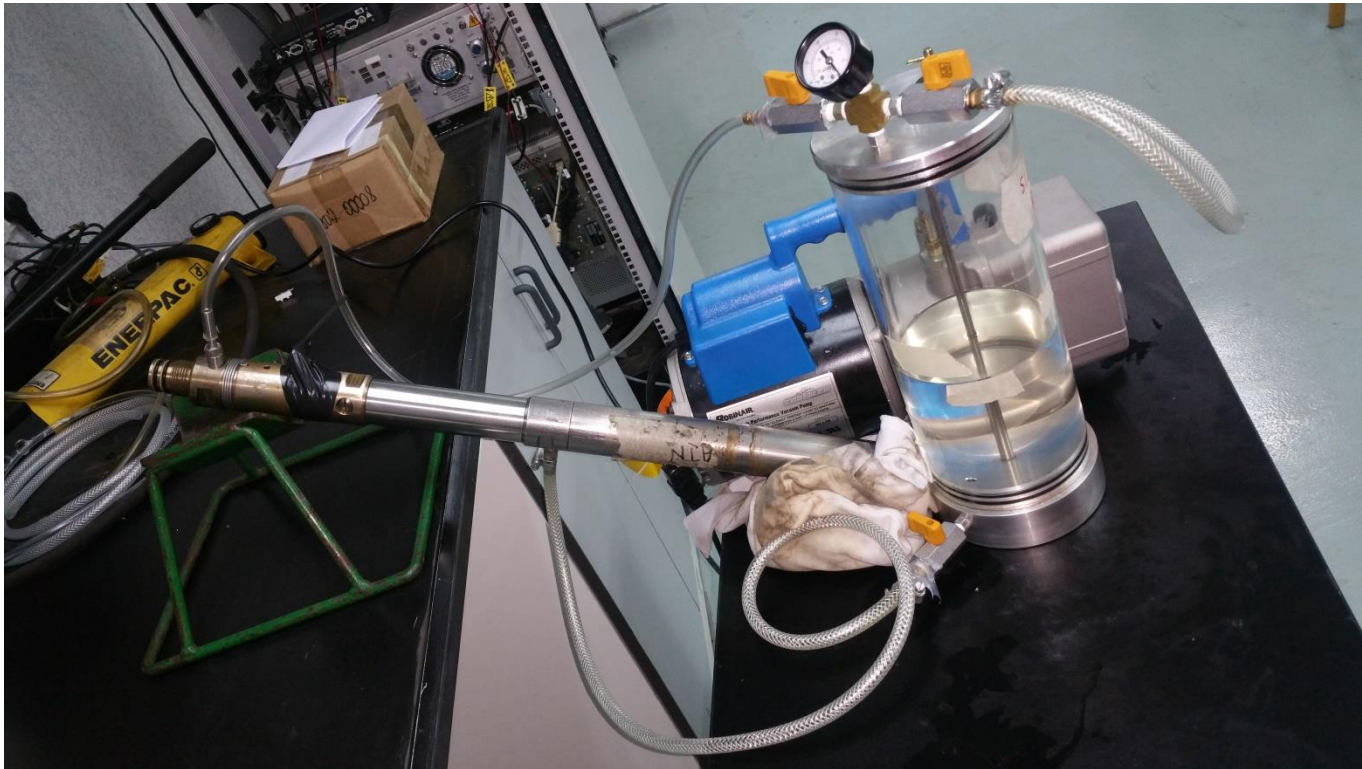


**Use to hold the
position of the
piston mandrel**



**Oil filling
adapter.**





- 25. Fill the NTO with the Dow Corning 200 Fluid, 100CST Oil.**
- 26. Circulate the oil filling around 2 hours to eliminate the bubbles during the filling process.**