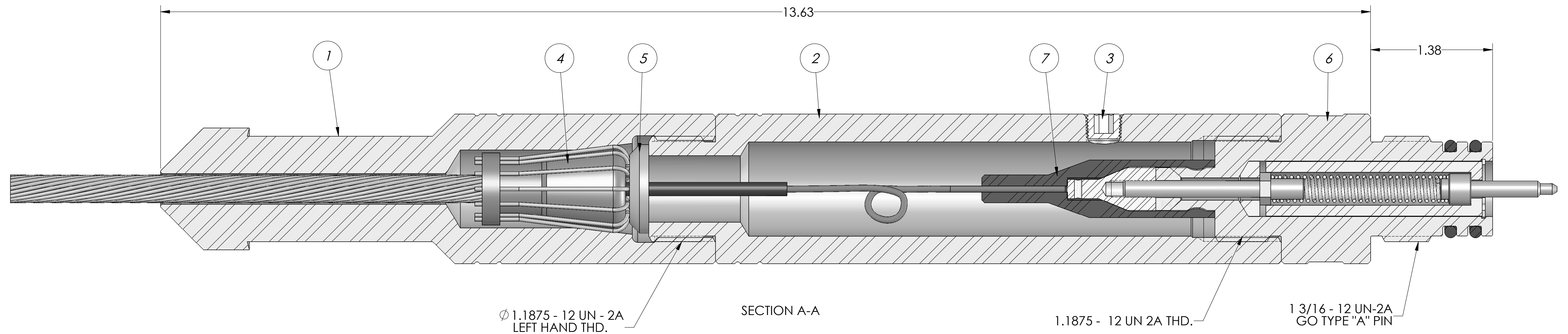
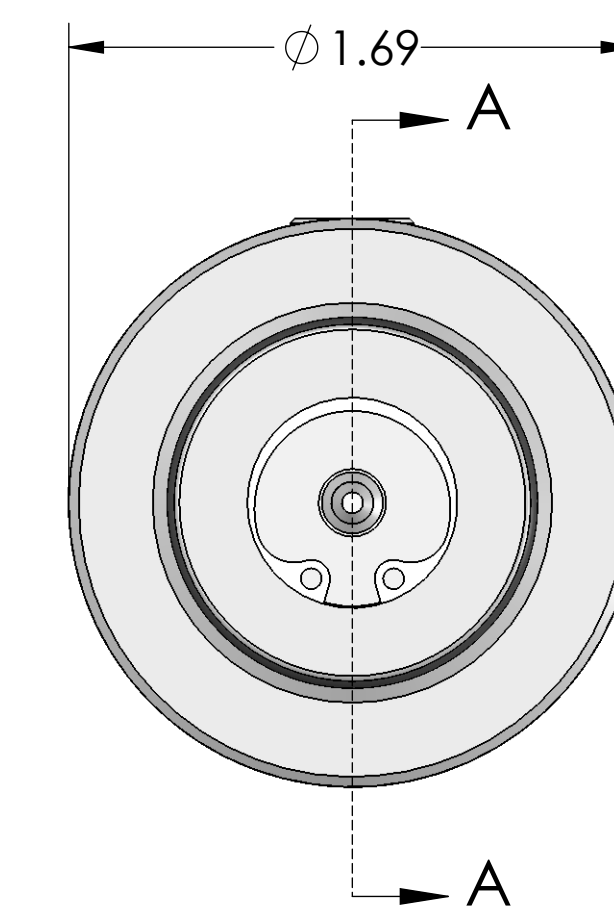


REVISIONS					
REV.	DESCRIPTION	BY	DATE	ECO #	APPROVED
00	RELEASE FOR PRODUCTION	DL	6/12/2014		AKL

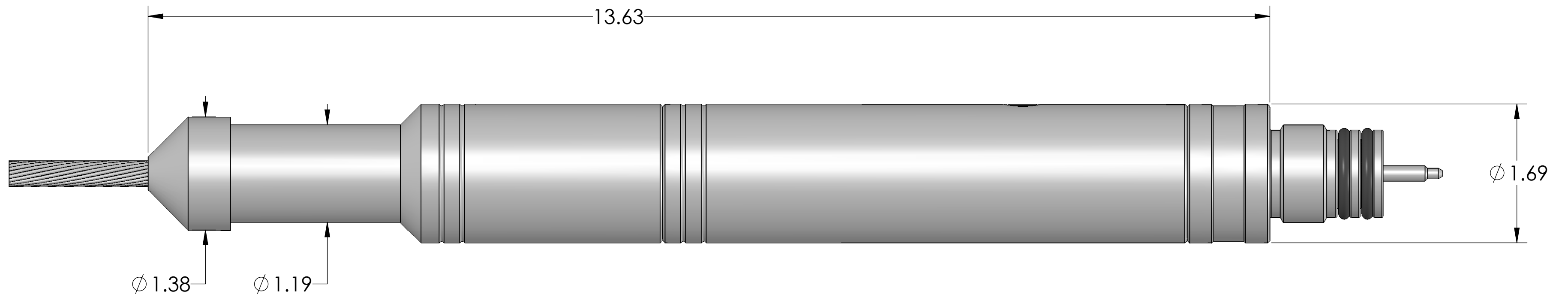



ITEM NO.	PART NUMBER	DESCRIPTION	QTY.
1	5916-105-187	FISHING NECK; 3/16 LINE	1
	5916-105-218	FISHING NECK; 7/32 LINE	
	5916-105-288	FISHING NECK; .288 LINE	
	5916-105-312	FISHING NECK; 5/16 LINE	
	5916-105-375	FISHING NECK; 3/8 LINE	
	5916-105-437	FISHING NECK; 7/16 LINE	
	5916-105-468	FISHING NECK; 15/32 LINE	
2	5916-011-000	CABLEHEAD BODY	1
3	3914-100-002	PIPE PLUG; 1/8" NPT	1
4	3916-319-035	ROPE SOCKET CONE; 3/16 LN .035 STRAND	1
	3916-322-030	ROPE SOCKET CONE; 7/32 LN .030 STRAND	
	3916-322-035	ROPE SOCKET CONE; 7/32 LN .035 STRAND	
	3916-328-040	ROPE SOCKET CONE; 9/32 LN .040 STRAND	
	3916-329-032	ROPE SOCKET CONE; 5/16 LN .043 STRAND	
	3916-331-043	ROPE SOCKET CONE; 3/8 LN .051 STRAND	
	3916-337-051	ROPE SOCKET CONE; 7/16 LN .058 STRAND	
	3916-344-058	ROPE SOCKET CONE; 15/32 LN .049 STRAND	
3916-347-049	ROPE SOCKET CONE; .474 LN .065 STRAND		
5	3916-0CW-218	COMPRESSION WASHER	1
6	3903-000-300	CONTACT SUB ASSY.	1
7	9000-925-062	CABLEHEAD BOOT; 1/16" HOLE	1
	9000-925-125	CABLEHEAD BOOT; 1/8" HOLE	
	9000-925-187	CABLEHEAD BOOT; 3/16" HOLE	

PART NUMBER	DESCRIPTION
5916-15119-035	CABLEHEAD ASSY; 3/16 LN .035 STRAND
5916-15122-030	CABLEHEAD ASSY; 7/32 LN .030 STRAND
5916-15122-035	CABLEHEAD ASSY; 7/32 LN .035 STRAND
5916-15128-040	CABLEHEAD ASSY; 9/32 LN .040 STRAND
5916-15131-043	CABLEHEAD ASSY; 5/16 LN .043 STRAND
5916-15137-051	CABLEHEAD ASSY; 3/8 LN .051 STRAND
5916-15144-058	CABLEHEAD ASSY; 7/16 LN .058 STRAND
5916-15147-049	CABLEHEAD ASSY; 15/32 LN .049 STRAND
5916-151474-065	CABLEHEAD ASSY; .474 LN .065 STRAND



<p>PROPRIETARY AND CONFIDENTIAL THE INFORMATION CONTAINED IN THIS DRAWING IS CONFIDENTIAL AND IS THE SOLE PROPERTY OF HUNTING ENERGY SERVICES. ANY DISCLOSURE OR REPRODUCTION IN PART OR AS A WHOLE WITHOUT THE WRITTEN PERMISSION OF HUNTING ENERGY SERVICES IS PROHIBITED. ©Copyright 2011, Hunting Energy Services All rights reserved.</p>	<p>UNLESS OTHERWISE SPECIFIED: DIMENSIONS ARE IN INCHES TOLERANCES: ANGULAR: MACHINE ± 1/4° ONE PLACE DECIMAL: ± .050 TWO PLACE DECIMAL: ± .015 THREE PLACE DECIMAL: ± .005 FOUR PLACE DECIMAL: ± .0005 CONCENTRIC: WITHIN .005 MACHINED FINISHES 125 MAX. REMOVE ALL BURRS AND SHARP EDGES MIN. R.010</p>	NAME	DATE	<p>TITLE: CABLEHEAD ASSY. - 1 11/16 OD CONE TYPE II w/1 3/8 FISHNECK & GREASE PORT</p>		
		DRAWN	LANGFORD		6/12/2014	
		APPROVED	LANE		6/19/2014	
		COMMENTS				
MATERIAL TRACEABILITY REQUIRED			MATERIAL	SIZE	DWG. NO.	REV.
ERROR!:MATERIAL				D	5916-1510L-0ST	00
DO NOT SCALE DRAWING			SCALE: NONE	WEIGHT: 6.00 LBS.	SHEET 1 OF 2	



 PROPRIETARY AND CONFIDENTIAL THE INFORMATION CONTAINED IN THIS DRAWING IS CONFIDENTIAL AND IS THE SOLE PROPERTY OF HUNTING ENERGY SERVICES. ANY DISCLOSURE OR REPRODUCTION IN PART OR AS A WHOLE WITHOUT THE WRITTEN PERMISSION OF HUNTING ENERGY SERVICES IS PROHIBITED. ©Copyright 2011, Hunting Energy Services All rights reserved.	UNLESS OTHERWISE SPECIFIED:			TITLE:			
	DIMENSIONS ARE IN INCHES TOLERANCES: ANGULAR: MACHINE ± 1/4° ONE PLACE DECIMAL: ± .050 TWO PLACE DECIMAL: ± .015 THREE PLACE DECIMAL: ± .005 FOUR PLACE DECIMAL: ± .0005 COAXIAL DIAMETERS CONCENTRIC WITHIN .005 MACHINED FINISHES 125 MAX. REMOVE ALL BURRS AND SHARP EDGES MIN. R.010			DRAWN	LANGFORD	2/4/2014	CABLEHEAD ASSY. - 1 11/16 OD
	FINISH: _____ HEAT TREAT: _____ DO NOT SCALE DRAWING			APPROVED	LANE	6/19/2014	
				COMMENTS			
			MATERIAL TRACEABILITY REQUIRED				
			MATERIAL				
			ERROR!:Material				
			SIZE	DWG. NO.	REV		
			C	5916-1510L-OST	00		
			SCALE: NONE	WEIGHT: 6.00 LBS.	SHEET 2 OF 2		