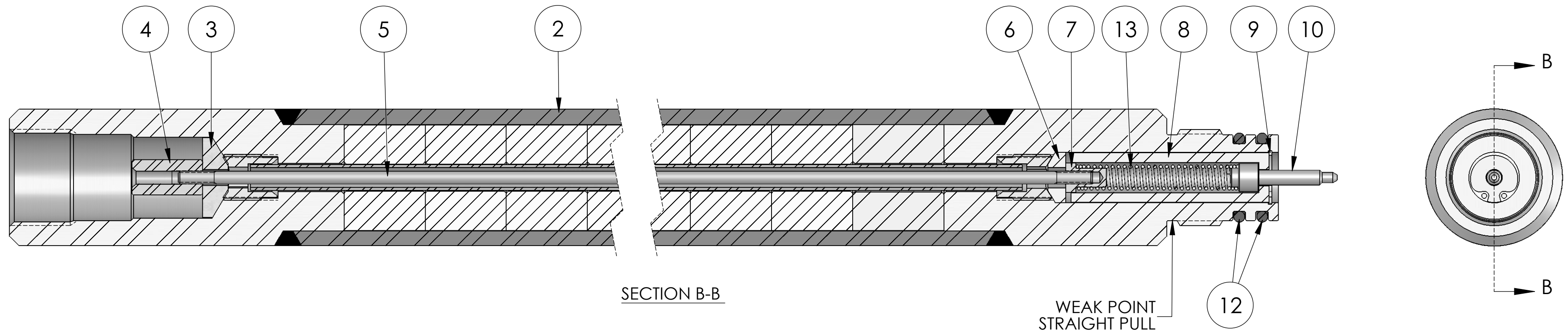


| REVISIONS | | | | | |
|-----------|-----------------------|----|-----------|-------|----------|
| REV. | DESCRIPTION | BY | DATE | ECO # | APPROVED |
| 00 | DRAWN INTO SOLIDWORKS | DL | 6/22/2010 | | |



| ITEM NO. | PART NUMBER | DESCRIPTION | QTY. |
|----------|--|---|--------------------|
| 1 | 3925-011-003 3925-011-005 3925-011-007 | SINKER BAR ASSY; 1 11/16" X 3 FT. SINKER BAR ASSY; 1 11/16" X 5 FT. SINKER BAR ASSY; 1 11/16" X 7 FT. | ITEMS 2 thru 12 |
| 2 | 3925-111-003 3925-111-005 3925-111-007 | SINKER BAR BODY; 1 11/16" X 3 FT. SINKER BAR BODY; 1 11/16" X 5 FT. SINKER BAR BODY; 1 11/16" X 7 FT. | 1 |
| 3 | 0255-000-003 | INSULATING WASHER | 1 |
| 4 | 3924-000-003 | CONTACT SOCKET | 1 |
| 5 | 3924-003-003 3924-003-005 3924-003-007 | CONTACT ROD - 3 FT. CONTACT ROD - 5 FT. CONTACT ROD - 7 FT. | 1 |
| 6 | 3903-000-007 | INSULATING WASHER | 1 |
| 7 | 3924-000-006 | CONTACT NUT | 1 |
| 8 | 3903-000-011 | PLUNGER INSULATOR | 1 |
| 9 | 3903-000-012 | SNAP RING | 1 |
| 10 | 3903-000-010 | CONTACT PLUNGER | 1 |
| 11 | 3924-002-000 3924-002-003 3924-002-005 3924-002-007 | CONACT KIT - LESS ROD CONACT KIT - 3 FT. CONACT KIT - 5 FT. CONACT KIT - 7 FT. | ITEMS 3 thru 11 |
| 12 | 0111-211-V95 | O-RING | 2 |
| 13 | 3903-000-009 | CONTACT SPRING | 1 |

HOUSING MATERIAL - 1026 MILD STEEL TUBE
FILLER - TUNGSTEN SLUGS
AND 4140 H.T. ALLOY STEEL ENDS

TEMPERATURE RATING - 400°F

PRESSURE RATING - 20,000 PSI

PULL STRENGTH (TENSILE) - APPROX. 65,000 LBS. @ 85%

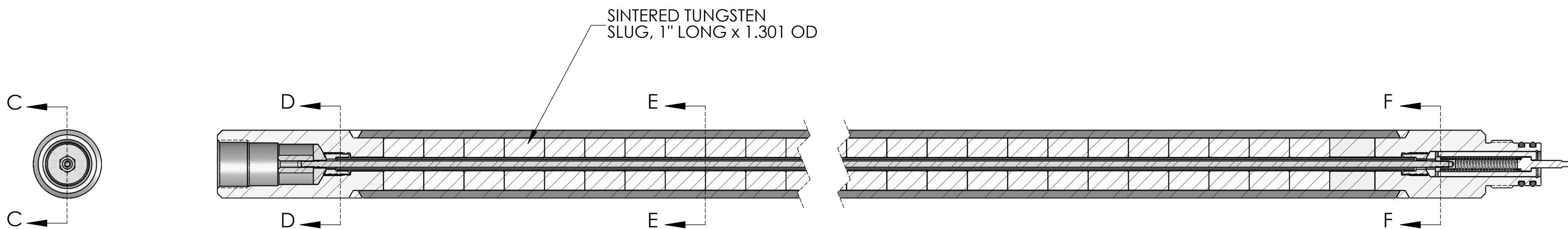
WEIGHT -
3 FT. - 33 LBS.
5 FT. - 58 LBS.
7 FT. - 83 LBS.

DIAMETER - 1.687

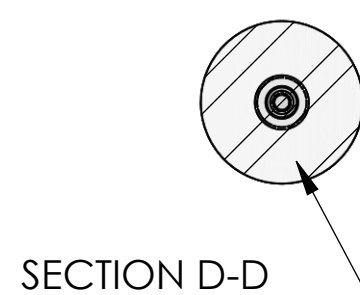
OVERALL LENGTH -
3 FT. - 37.38
5 FT. - 61.38
7 FT. - 85.38

INTERNAL MATERIAL MAKE-UP;
CONTACTS - STAINLESS STEEL
INSULATORS - PEEK 30% GLASS FILLED
O-RINGS - VITON 95 DUROMETER

| | | | | | |
|--|---|-----------------------------|------------|--------------------|---|
| <p>HUNTING ENERGY SERVICES</p> <p>PROPRIETARY AND CONFIDENTIAL THE INFORMATION CONTAINED IN THIS DRAWING IS CONFIDENTIAL AND IS THE SOLE PROPERTY OF HUNTING ENERGY SERVICES. ANY DISCLOSURE OR REPRODUCTION IN PART OR AS A WHOLE WITHOUT THE WRITTEN PERMISSION OF HUNTING ENERGY SERVICES IS PROHIBITED. ©Copyright 2011, Hunting Energy Services. All rights reserved.</p> | UNLESS OTHERWISE SPECIFIED: | NAME | DATE | TITLE: | |
| | DIMENSIONS ARE IN INCHES TOLERANCES: ANGULAR: MACHINE ± 1/4° ONE PLACE DECIMAL: ± .050 TWO PLACE DECIMAL: ± .015 THREE PLACE DECIMAL: ± .005 FOUR PLACE DECIMAL: ± .0005 COAXIAL DIAMETERS CONCENTRIC WITHIN .005 MACHINED FINISHES 125 MAX. REMOVE ALL BURRS AND SHARP EDGES MIN. R.010 | DRAWN | LANGFORD | 6/22/2010 | SINKER BAR ASSY. 1 11/16" O.D. TUNGSTEN FILLED |
| | FINISH | 99401-12 | HEAT TREAT | N/A | |
| | DO NOT SCALE DRAWING | APPROVED | WILLIAMS | 8/30/2012 | REV 00 |
| | COMMENTS | MATERIAL TRACEABILITY REQ'D | | SCALE: NONE | |
| | MATERIAL | SEE NOTE | | WEIGHT: 33.22 LBS. | |
| | SIZE | DWG. NO. 3925-011-00L | | SHEET 1 OF 2 | |

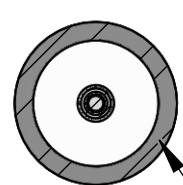


SECTION C-C



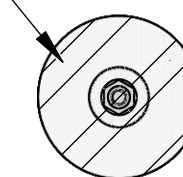
SECTION D-D

4140 HT BAR
 2.02 SQ. IN. AREA
 144,000# TENSILE
 128,000# YIELD
 CALC. SHEAR (.58 OF TENSILE) - 168,710#
 CALC. SHEAR (.58 OF YIELD) - 149,964#



SECTION E-E

1026 DOM TUBE
 .884 SQ. IN. AREA
 97,000#/107,500# TENSILE
 83,000#/100,000# YIELD
 CALC. SHEAR (.58 OF TENSILE) - 49,733# MIN.
 55,117# MAX.
 CALC. SHEAR (.58 OF YIELD) - 51,028# MIN.
 61,480# MAX.



SECTION F-F

4140 HT BAR
 1.92 SQ. IN. AREA
 144,000# TENSILE
 128,000# YIELD
 CALC. SHEAR (.58 OF TENSILE) - 160,358#
 CALC. SHEAR (.58 OF YIELD) - 142,540#

| | | | | | | |
|---|---|------------|----------|-----------------------------|--------------------|---------------------|
| <p>PROPRIETARY AND CONFIDENTIAL THE INFORMATION CONTAINED IN THIS DRAWING IS CONFIDENTIAL AND IS THE SOLE PROPERTY OF HUNTING ENERGY SERVICES. ANY DISCLOSURE OR REPRODUCTION IN PART OR AS A WHOLE WITHOUT THE WRITTEN PERMISSION OF HUNTING ENERGY SERVICES IS PROHIBITED. ©Copyright 2011, Hunting Energy Services. All rights reserved.</p> | UNLESS OTHERWISE SPECIFIED: | NAME | DATE | TITLE: | | |
| | DIMENSIONS ARE IN INCHES TOLERANCES: ANGULAR: MACHINE ± 1/4° ONE PLACE DECIMAL: ± .050 TWO PLACE DECIMAL: ± .015 THREE PLACE DECIMAL: ± .005 FOUR PLACE DECIMAL: ± .0005 COAXIAL DIAMETERS CONCENTRIC WITHIN .005 MACHINED FINISHES 125 MAX. REMOVE ALL BURRS AND SHARP EDGES MIN. R.010 | DRAWN | LANGFORD | 6/22/2010 | | |
| | FINISH | HEAT TREAT | APPROVED | WILLIAMS | 8/30/2012 | |
| | 99401-12 | N/A | COMMENTS | MATERIAL TRACEABILITY REQ'D | | |
| DO NOT SCALE DRAWING | | MATERIAL | SEE PG 1 | SIZE | DWG. NO. | REV |
| | | | | C | 3925-011-00L | 00 |
| | | | | SCALE: NONE | WEIGHT: 33.22 LBS. | SHEET 2 OF 2 |