

PLATFORM SITE VISIT



CLIENT : PCSB SKA
FIELD : BAYAN
PLATFORM : BAYAN-B
WELL(S) : BY-222
INSPECTED BY : MATHIAS / MAX SPENSER
DATE OF INSPECTION : 8th MARCH 2023
REMARK :

TABLE OF CONTENTS

PLATFORM DETAILS

WELL DETAILS

UTILITIES ONBOARD PLATFORM

SECTION A1

TOP DECK/MAIN DECK DIMENSION

WIDE, OVERALL	: 38'		
LENGTH, OVERALL	: 100'		
NO OF LEVELS	: 3		
NO OF ESCAPE POINT	: 2		
NO OF LIFE RAFT/LIFE BOAT	: 2		
LEVELS CONFIGURATION (FROM TOP)	:	MAIN DECK	<input checked="" type="checkbox"/>
		UPPER MEZZADINE DECK	<input type="checkbox"/>
		LOWER MEZZADINE DECK	<input checked="" type="checkbox"/>
		CELLAR DECK	<input checked="" type="checkbox"/>
		SEA DECK/SUMP PUMP DECK	<input type="checkbox"/>
HEIGHT FROM SEA LEVEL TO MAIN DECK	:		
HEIGHT FROM SEA LEVEL TO LOWEST DECK	:		
WIDE, USEABLE FOR E-LINE OPS ONLY	: 38'		
LENGTH, USEABLE FOR E-LINE OPS ONLY	: 100'		

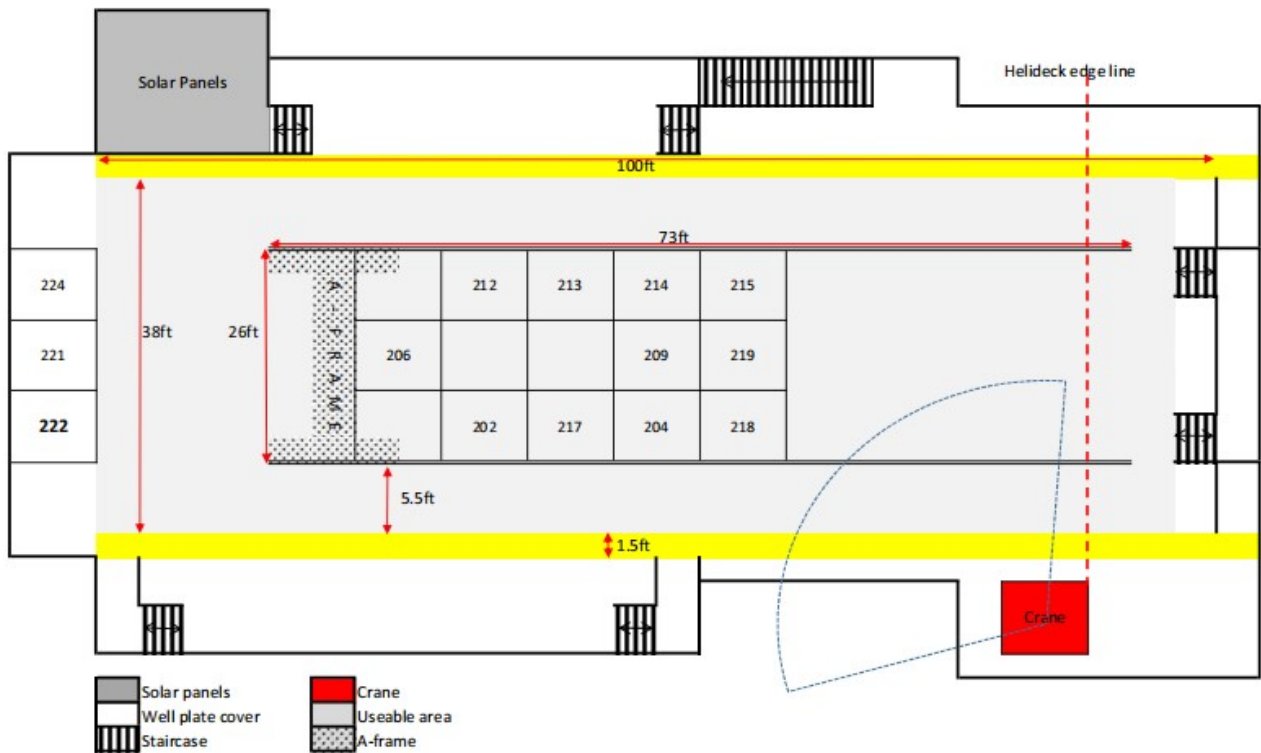
Usable Area for E-line Operation





PLATFORM GENERAL LAYOUT SKETCH

*Highlighted areas are usable for our operation.



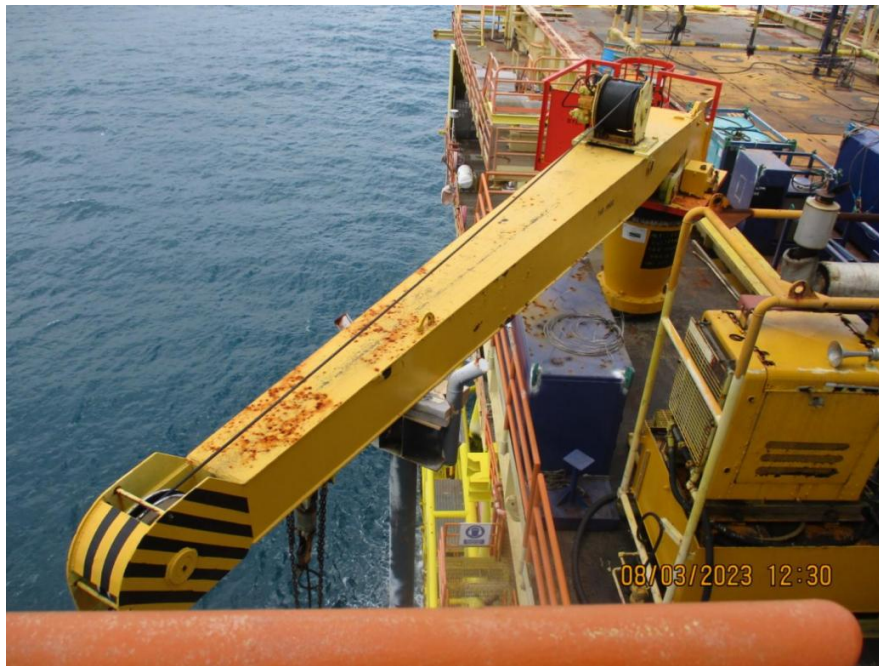
SECTION A2 CRANE AND HOISTING EQUIPMENTS

NUMBER OF CRANE ONBOARD : 1 EA

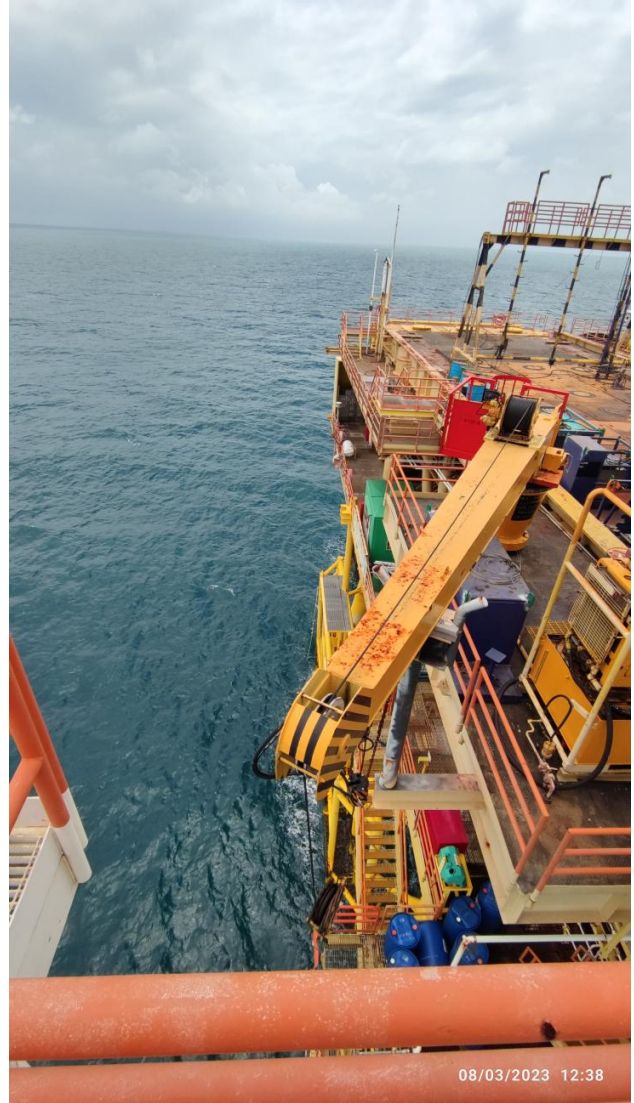
CRANE DETAILS

TYPE OF CRANE	MAIN HOIST CAPACITY (mT)	FLY/AUX BLOCK CAPACITY (mT)	MAIN HOIST REACH LENGTH (ft)	FLY/AUX REACH LENGTH (M)
MAIN CRANE	3.7	3.7	25ft @ 0	-
AUXILIARY CRANE	-	-	-	-
OTHER CRANE	-	-	-	-

Picture of crane

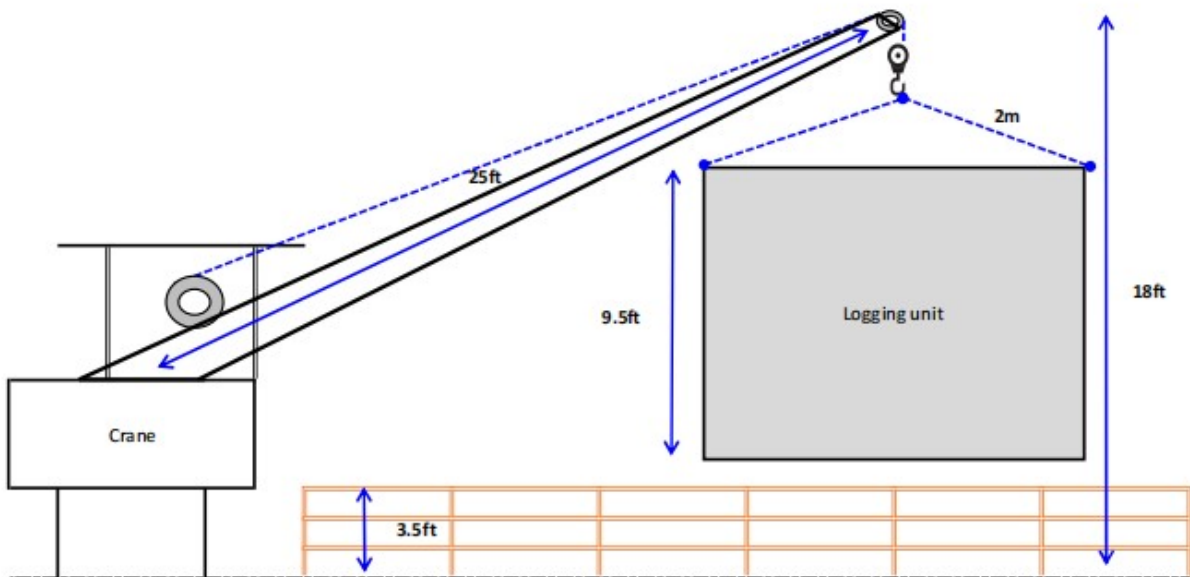








No	Item	Dimension				Sling	
		Length	Width	height	Weight(MT)	Size (OD x Length)	SWL(MT)
Logging System							
1	ASEP Logging Unit	2000mm	2130mm	2900mm	1.82T	16mm X 2.1mtr	4.75T
2	ASEP Power Pack	2240mm	1430mm	1690mm	1.82T	16mm X 4mtr	5.5T
3	ASEP Cable Winch	1875mm	1355mm	1320mm	1.15T	16mm X 2mtr	6.3T
Mast System(High Reach Base Mast)							
4	70ft Telescopic Mast Skid	6069mm	1524mm	1524mm	2.12T	19mm X 3mtr	9.4T
5	Telescopic Mast Column	6069mm	1524mm	1524mm	2.51T	13mm X 2.7mtr	4.4T
6	Mast Intensifier	1130mm	890mm	950mm	0.60T	13mm X 1.5mtr	3.5T
Pressure Control Equipments							
7	PCE	3860mm	1290mm	1720mm	4.9T	20mm X 3mtr	10T
Supply/Maintenance Box & Tool Pallet							
8	6ft Mini Container(Mini Workshop)	1600mm	1850mm	2900mm	2.7T	22mm X 2mtr	16T
9	6ft Mini Container(Mini Workshop)	1600mm	1850mm	2900mm	2.7T	23mm X 2.17mtr	13T
10	Tote Tank	1500mm	1160mm	2340mm	0.8T	19mm X 1.9mtr	5T
Auxillary							
11	Air Compressor	2290mm	1350mm	1750mm	1.5T	16mm X 2mtr	6.9T



SECTION B WELL DETAILS (BY-222)

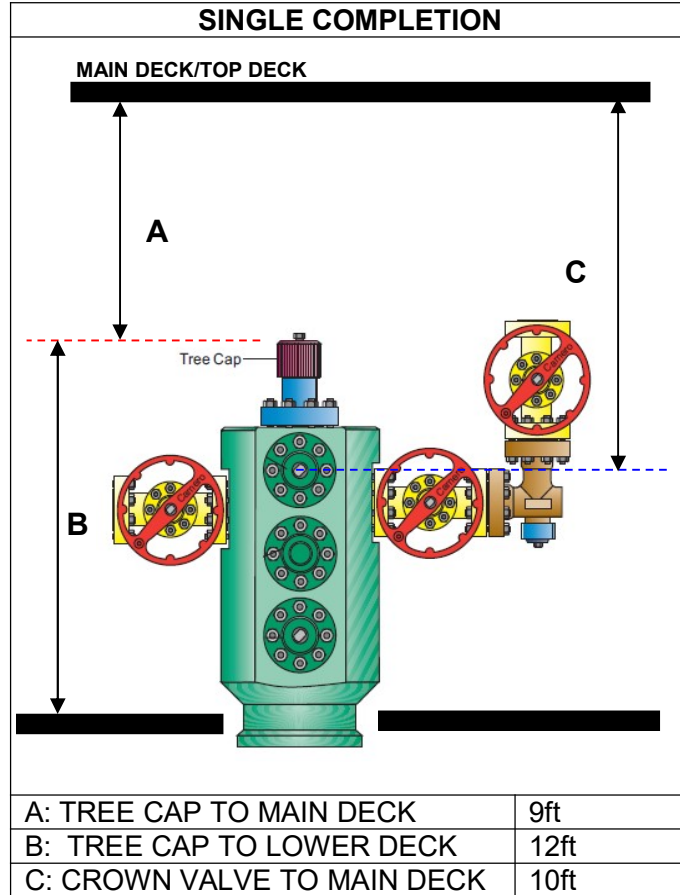
- TOTAL SLOTS ON PLATFORM : 18
- TOTAL SLOTS USED : 18
- EMPTY SLOTS : 0
- PRIORITY WELLS : 1
- INTERVENTION HATCH COVER EXIST? : YES NO
- TYPE OF COVER ON TOP OF WELLS : GRATING PLATE (REMOVEABLE)
 PLATE (NON REMOVEABLE)
 OTHERS (PLEASE SPECIFY)

- OBSTRUCTION AROUND WELL AREA : YES (PLEASE SPECIFY) NO

- WELL TYPE : OIL PRODUCER GAS PRODUCER
 INJECTOR WELL
 OTHER (PLEASE SPECIFY)

- TUBING SIZE : 2³/₈" 2⁷/₈" 3¹/₂"
 4¹/₂" 5¹/₂"
- X-MAS TREE RATING : 3K PSI 5K PSI 10K PSI 20K
 PSI
- X-MAS TREE CONNECTION TYPE : BOWEN OTIS ELMAR
 SOLAR ALERT
- X-MAS TREE CONFIGURATION : SINGLE STRING DUAL STRING
 CONDUCTOR SHARE WELLHEAD (CSW)/SPLITTER
 >2 STRING (MULTIPLE STRING)
- X-MAS TREE CONNECTION SIZE : 3-1/8" BOWEN

X-MAS TREE SKETCH



Well	Tree Cap to Main Deck	Tree Cap to Lower Deck	Crown Valve to Main Deck
BY222	9ft	12ft	10ft

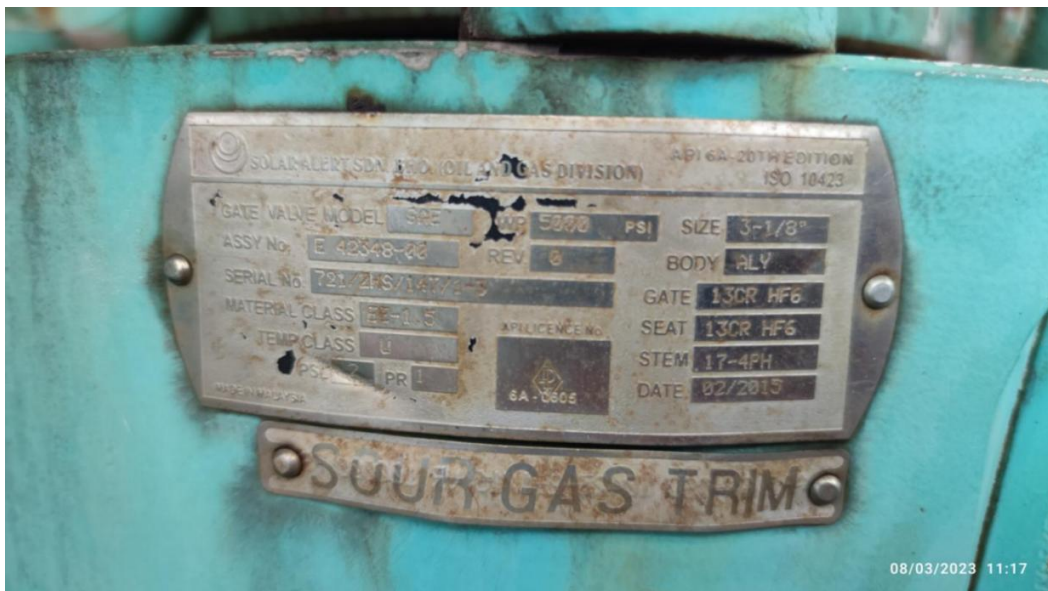
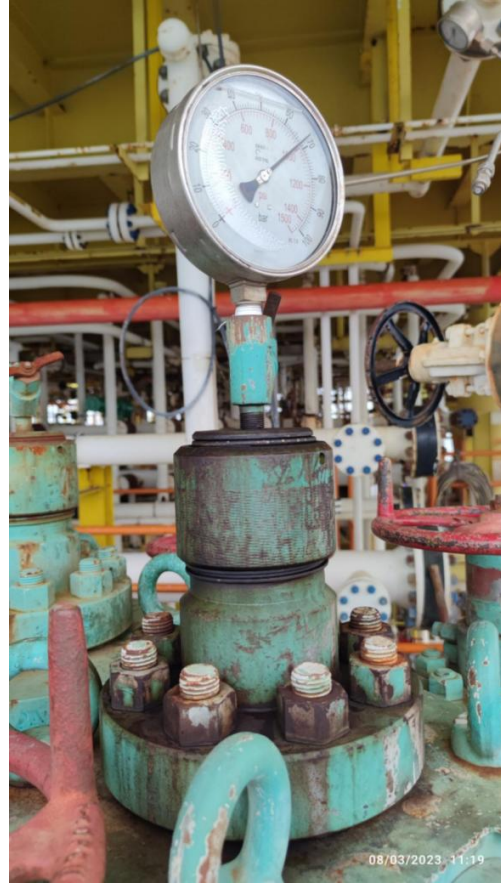


Fig: X-mas tree well By-222, X-mas tree cap and tree data plate.

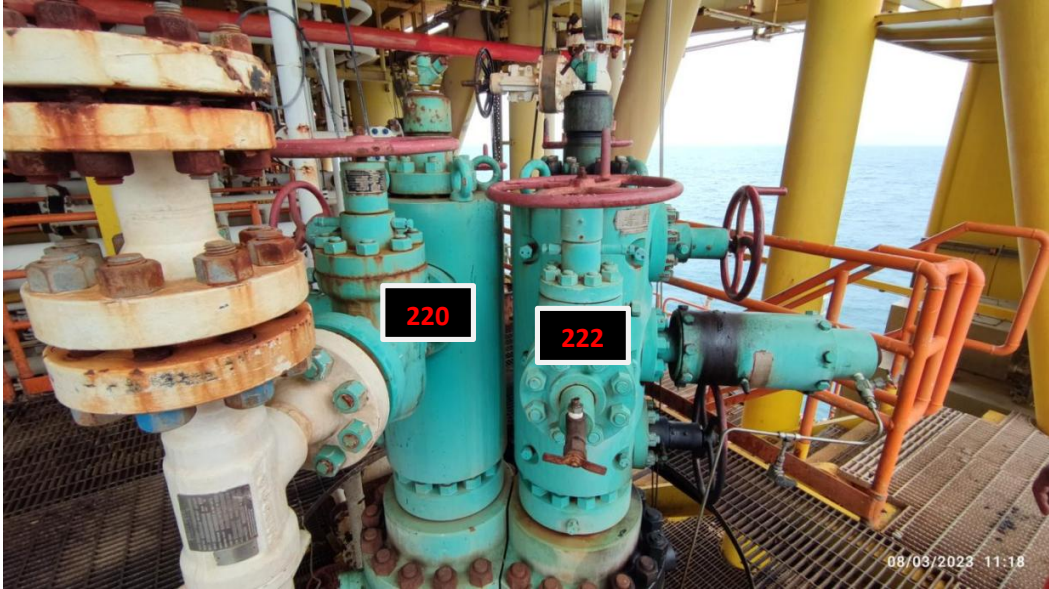


Fig: X-max tree well By-220 & By-222



Fig: X-max tree well By-222



Fig: X-max tree well By-220 & By-222 view from lower deck to hatch cover above.

SECTION C UTILITIES ONBOARD PLATFORM
DIESEL SUPPLY

SUPPLY TYPE : HOSE JERRY CAN VALVE TAP
 CAM LOCK

DIESEL TYPE : N/A

CONNECTION TYPE : N/A

HOSE LENGTH : N/A

WATER SUPPLY

SUPPLY TYPE : HOSE TOTE TANK JERRY CAN TAP
 VALVE ¼" FITTING ½" FITTING
 CAM LOCK

WATER TYPE : FRESH WATER SEA WATER TREATED SEA WATER

CONNECTION TYPE : N/A

HOSE LENGTH : N/A

ELECTRICAL POWER SUPPLY

SUPPLY TYPE : AC DC

VOLTAGE : 110V 240/220V 415V 440V

PHASING : SINGLE PHASE 3-PHASE

MAX CURRENT : 1A 5A 10A 12/15A 20A

CONNECTION TYPE : FLYING LEADS ZONE 2 CONNECTOR (PLS SPECIFY TYPE)
 TAPPED FROM DISTRIBUTION PANEL

CABLE LENGTH : N/A

COMPRESSED AIR SUPPLY

- SUPPLIED PRESSURE : 80-110 PSIA 100-150 PSIA > 150 PSIA
- SUPPLIED CFM : 20-50 50-100 100-200
- DRIED AIR? : YES NO
- CONNECTOR TYPE : 1" CHICAGO 2" CHICAGO ¾" NPT
 1" NPT ½" FITTING ¾" FITTING
 1" FITTING VALVE
- HOSE LENGTH : N/A

Additional Picture for Reference:



Fig: Liferaft 25pax, lifebouy & escape ladder at cellar deck.



Fig: Life jacket box at cellar deck.



Fig: Fire extinguisher box at cellar deck.



Fig: Overview of maindeck.



Fig: Overview of maindeck.

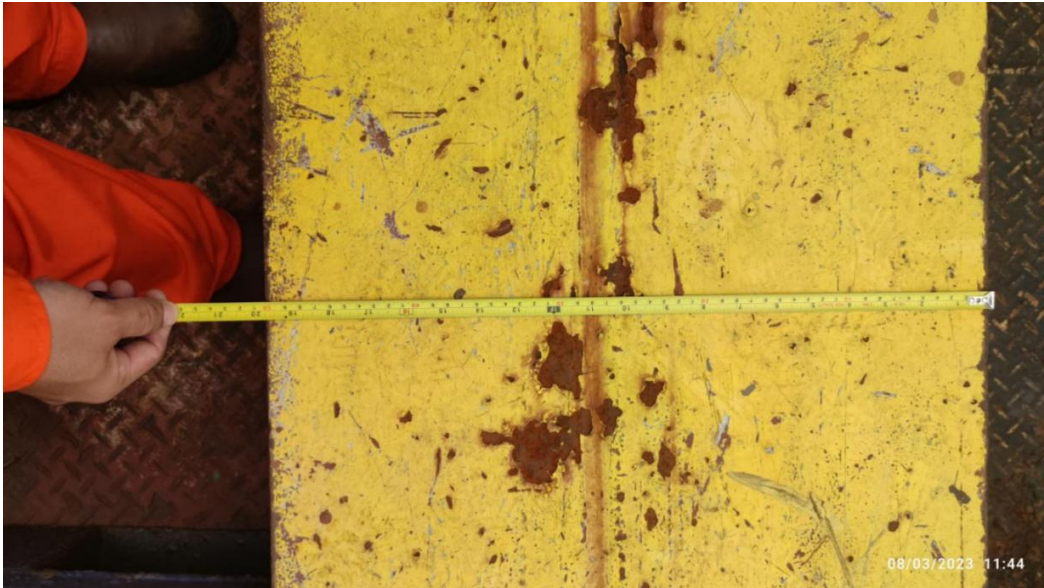


Fig: Beam width.



Fig: Solar panels at maindeck.



Fig: Overview of loading bay.



Fig: Overview of maindeck.



Fig: Overview of maindeck.

HIGHLIGHT/NOTES FOR THE OPERATION

- Identify main deck space is sufficient for E-line & slickline onboard / other equipment at main deck
- Identify crane type, capacity, boom height/angle/swing limitation if any
- Identify wellhead connection to confirm wellhead crossover for operations
- Identify lighting at main deck & wellhead area (if 24 hours operation is required)
- Identify other concerns (if any)