

PLATFORM SITE VISIT DULANG - D



CLIENT : PCSB PMA

FIELD : DULANG

PLATFORM : DULANG - D

WELL(S) : DLD-12, DLD-20, DLD-02, DLD-04L, DLD-07, DLD-19, DLD-13

INSPECTED BY : AZHAM HAMALEE

DATE OF INSPECTION : 7/3/2023

SPECIFIC OBJECTIVE : MAPS, PNx, TRACTOR & HPT-SNL

Reported by: IMAN RAZAK

REMARK : _____

TABLE OF CONTENTS

PLATFORM DETAILS	3
WELL DETAILS	8
UTILITIES ONBOARD PLATFORM	16

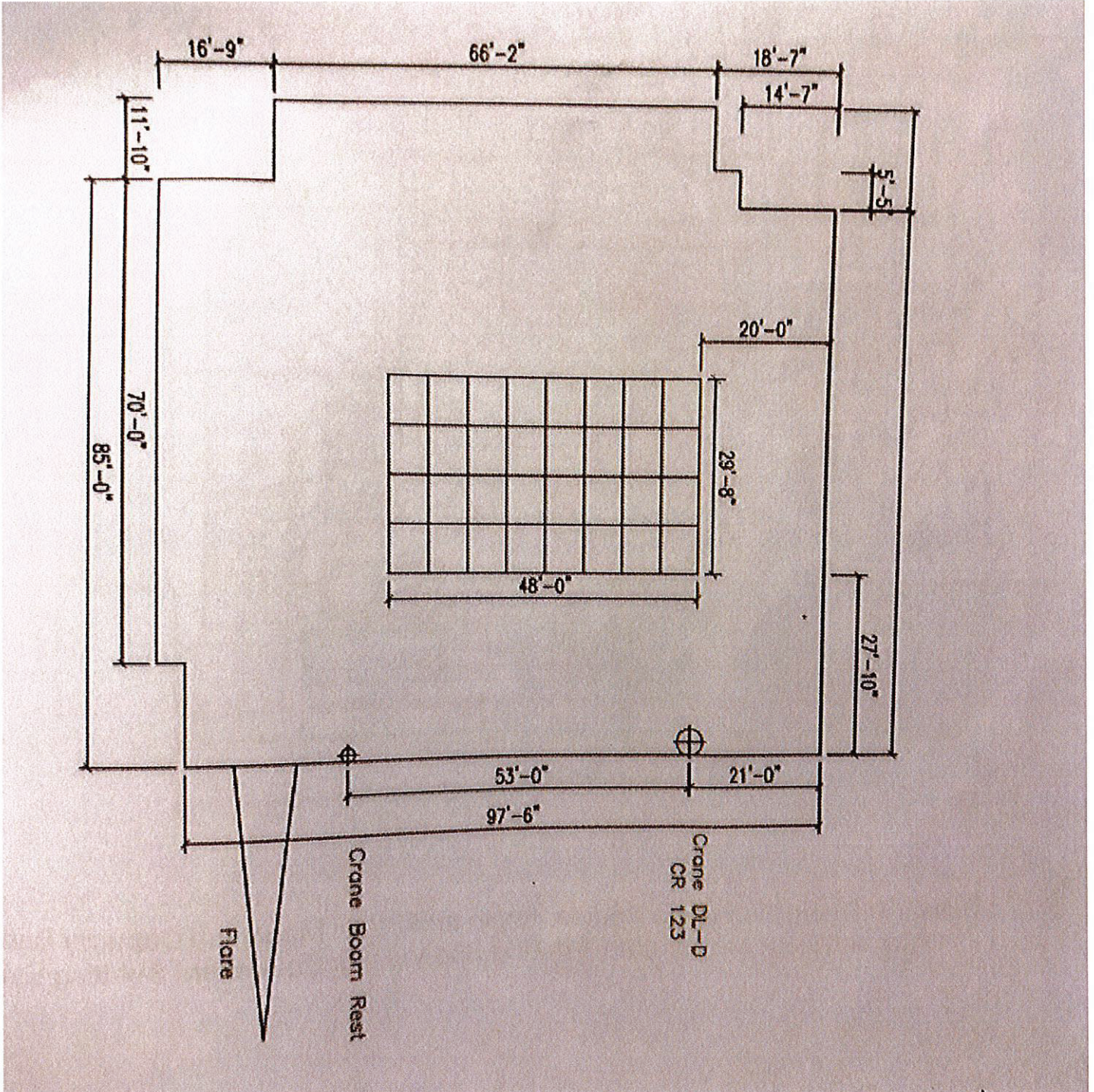
SECTION A1

TOP DECK/MAIN DECK DIMENSION

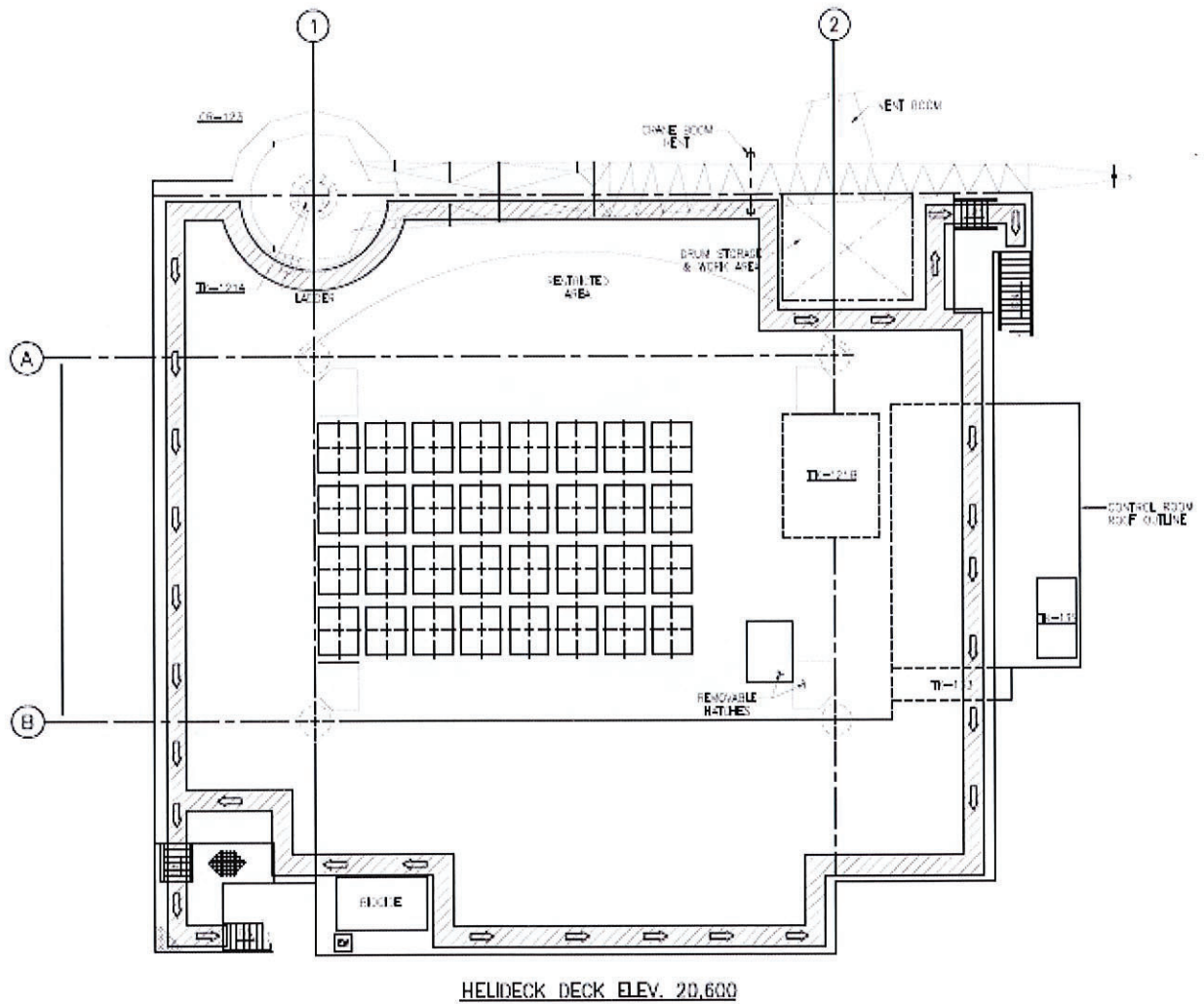
WIDE, OVERALL	: 29.5 m	
LENGTH, OVERALL	: 31 m	
NO OF LEVELS	: 3	
NO OF ESCAPE POINT	: 2	
NO OF LIFE RAFT/LIFE BOAT	: 2	
LEVELS CONFIGURATION (FROM TOP)	:	MAIN DECK <input checked="" type="checkbox"/>
		UPPER MEZZADINE DECK <input checked="" type="checkbox"/>
		LOWER MEZZADINE DECK <input checked="" type="checkbox"/>
		CELLAR DECK <input type="checkbox"/>
		SEA DECK/SUMP PUMP DECK <input type="checkbox"/>
HEIGHT FROM SEA LEVEL TO MAIN DECK	: 20.6 m	
HEIGHT FROM SEA LEVEL TO LOWEST DECK	: 12 m	
WIDE, USEABLE FOR E-LINE OPS ONLY	: 21 m	
LENGTH, USEABLE FOR E-LINE OPS ONLY	: 30 m	

*** PLEASE PROVIDE PICTURE AND SKETCH OF THE MAIN DECK, AND HIGHLIGHT THE USEALBE AREA FOR E-LINE OPERATIONS.**

PLATFORM GENERAL LAYOUT SKETCH (USE ADDITIONAL SHEETS IF MORE DETAILS REQUIRED)



PLATFORM GENERAL LAYOUT SKETCH (USE ADDITIONAL SHEETS IF MORE DETAILS REQUIRED)



SECTION A2 CRANE AND HOISTING EQUIPMENTS

NUMBER OF CRANE ONBOARD : 1

CRANE DETAILS

TYPE OF CRANE	MAIN HOIST CAPACITY (mT)	FLY/AUX BLOCK CAPACITY (mT)	MAIN HOIST REACH LENGTH (M)	FLY/AUX REACH LENGTH (M)
MAIN CRANE (WEST)	30	3	30.5	30.5
AUXILIARY CRANE				
OTHER CRANE				

*** PLEASE PROVIDE PICTURE OF CRANE AND CERTIFICATION TAG FOR EACH CRANE**



SECTION A2 CRANE AND HOISTING EQUIPMENTS



FAYELLE FAVCO MAIN HOIST
SAFE WORKING LOAD CHART
CAPACITIES AT 0° LIST
6 PARTS OF LINE

30.48m (100 FT) BOOM (6/10K)

RADIUS	BOOM ANGLE	LOAD IN TONNES	
		DF = 1.33	DF = 2.0
METERS	DEGREES	TONNES	TONNES
5.5	82.7	30.00	20.00
6.0	81.7	30.00	20.00
7.6	79.0	30.00	20.00
8.3	77.5	26.30	17.50
9.0	76.0	23.16	15.40
10.5	73.0	20.50	13.50
12.0	70.0	18.20	12.10
13.5	67.0	16.30	10.80
15.0	63.9	14.59	9.70
16.5	60.7	13.10	8.60
18.0	57.3	11.88	7.90
19.5	53.9	10.60	7.00
21.0	50.3	9.60	6.50
22.5	46.5	8.70	6.00
24.0	42.4	8.00	5.50
25.5	37.9	7.50	5.10
27.0	33.0	7.00	4.80
28.5	27.2	6.30	4.50
30.0	19.9	6.00	4.00
30.5	16.8	5.80	3.86

SECTION B WELL DETAILS

TOTAL SLOTS ON PLATFORM : 32

TOTAL SLOTS USED : 32

EMPTY SLOTS : 0

PRIORITY WELLS : D-02, D-12, D-20, D-13, D-4, D-7, D-19

INTERVENTION HATCH COVER EXIST ? : YES NO

TYPE OF COVER ON TOP OF WELLS : GRATING PLATE (REMOVEABLE)
 PLATE (NON REMOVEABLE) OTHERS (PLEASE SPECIFY)

OBSTRUCTION AROUND WELL AREA : YES (PLEASE SPECIFY) NO

WELL TYPE : OIL PRODUCER GAS PRODUCER
 INJECTOR WELL OTHER (PLEASE SPECIFY)

TUBING SIZE : 2³/₈" 2⁷/₈" 3¹/₂" 4¹/₂"
 5¹/₂"

X-MAS TREE RATING : 3K PSI 5K PSI 10K PSI 20K PSI

X-MAS TREE CONNECTION TYPE : BOWEN OTIS ELMAR SOLAR ALERT

X-MAS TREE CONFIGURATION : SINGLE STRING DUAL STRING

CONDUCTOR SHARE WELLHEAD (CSW)/SPLITTER

>2 STRING (MULTIPLE STRING)

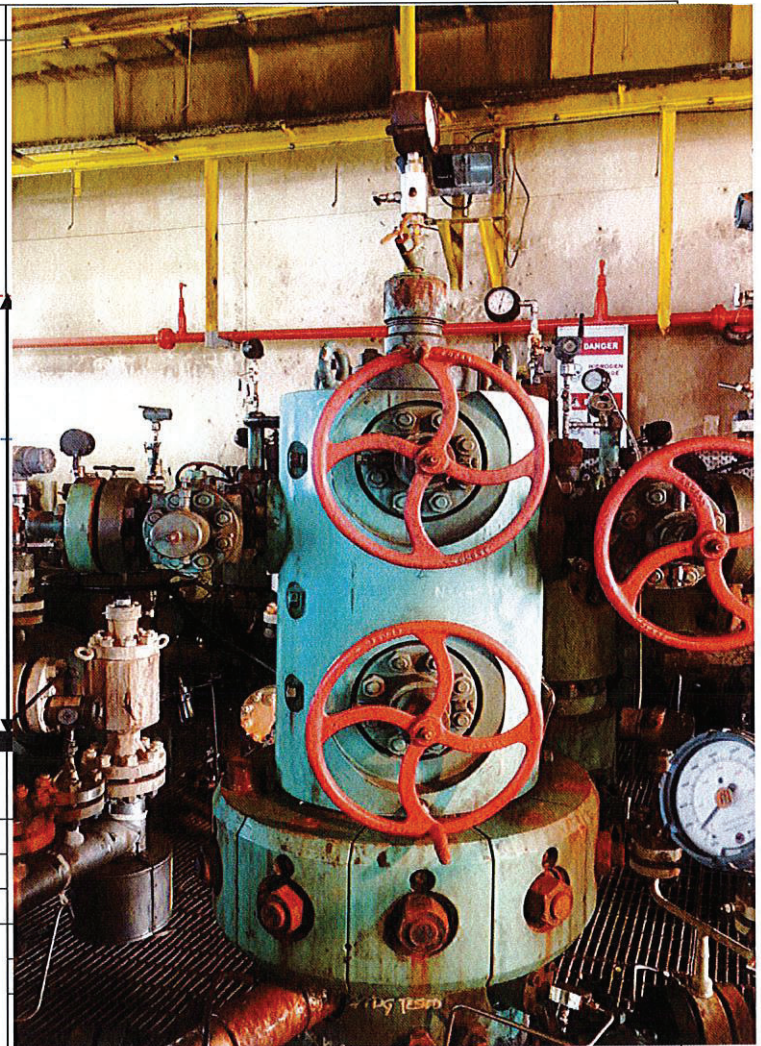
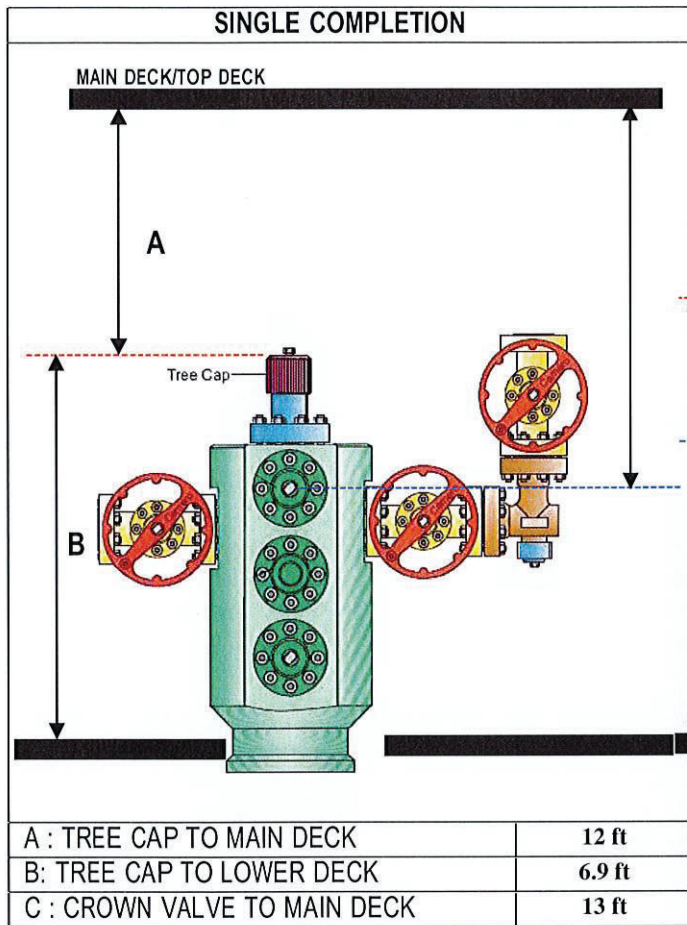
X-MAS TREE CONNECTION SIZE : SOLAR 3-1/8 5K, ICC 3-1/8 3K

DIMENSION BID

CASED HOLE SERVICES DIVISION

X-MAS TREE SKETCH

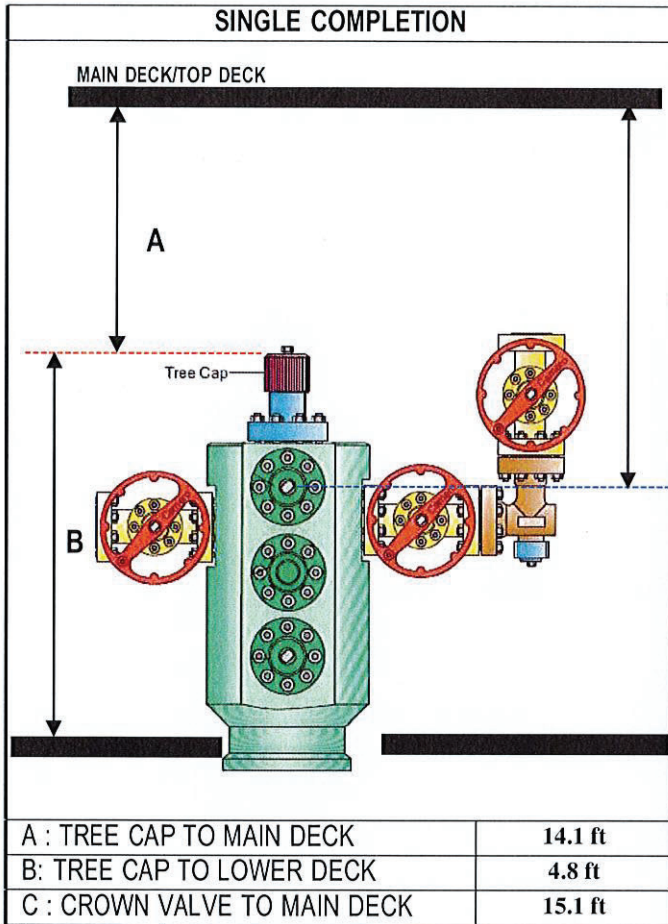
DULANG D-02



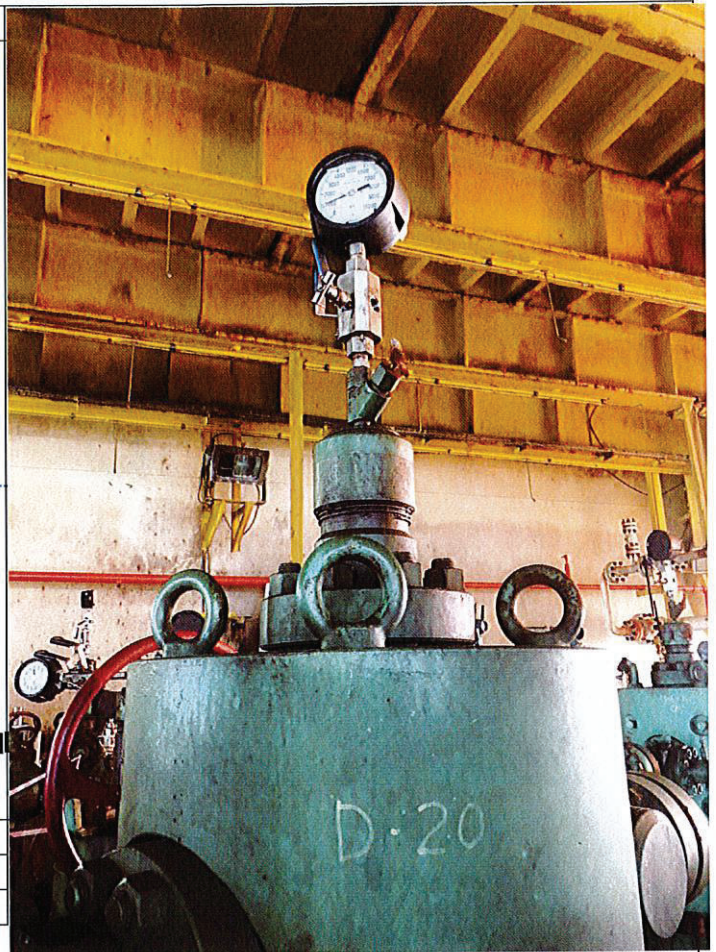
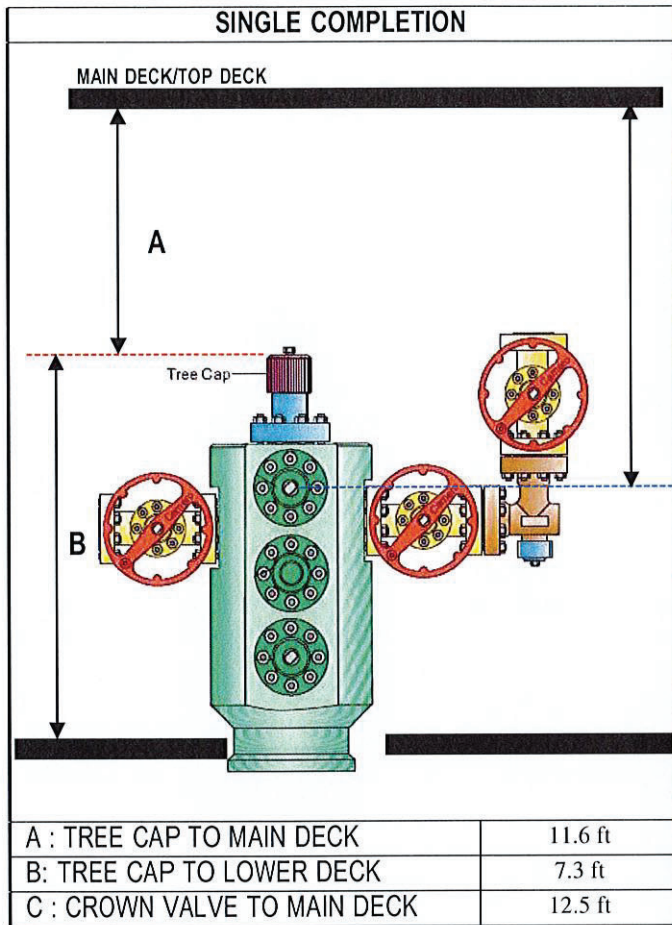
DIMENSION BID

CASED HOLE SERVICES DIVISION

DULANG D-12



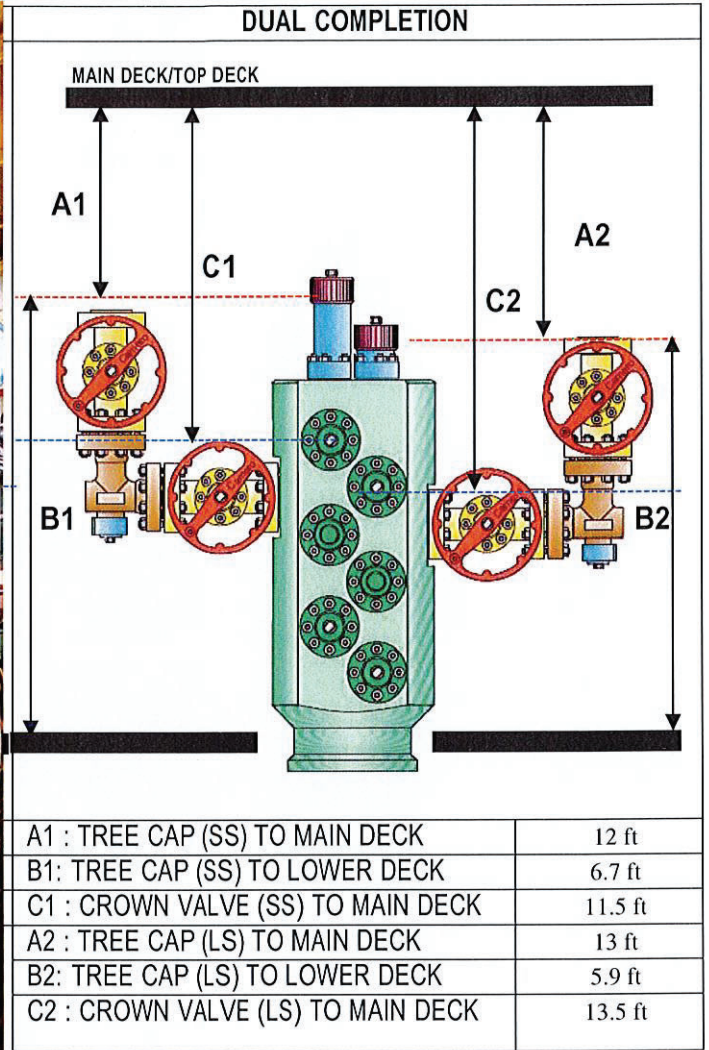
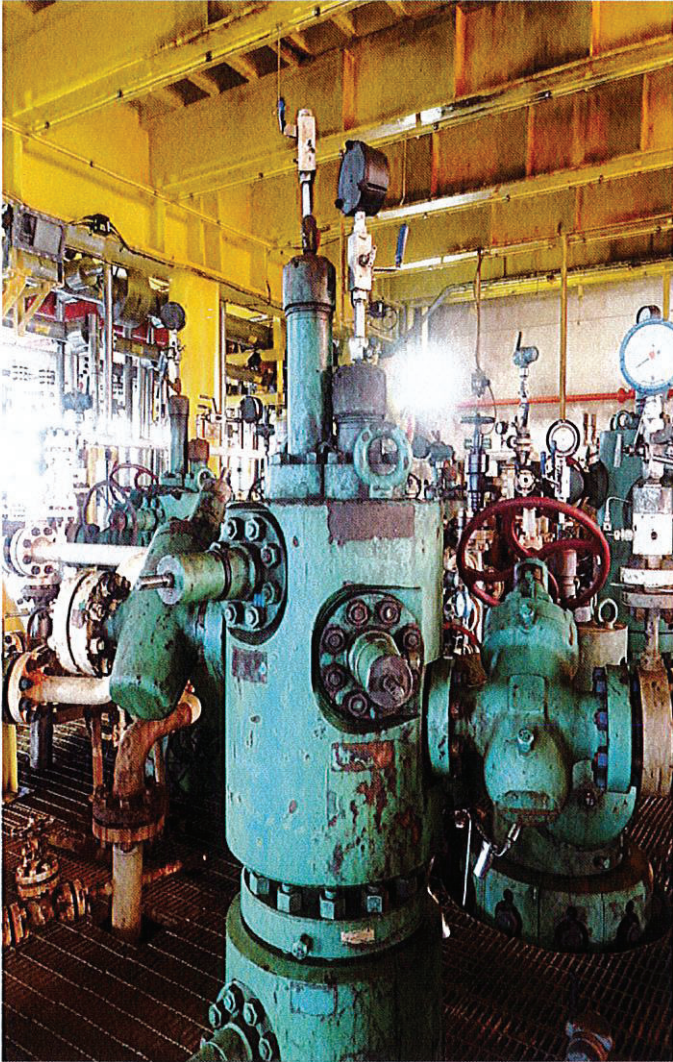
DULANG D-20



DIMENSION BID

CASED HOLE SERVICES DIVISION

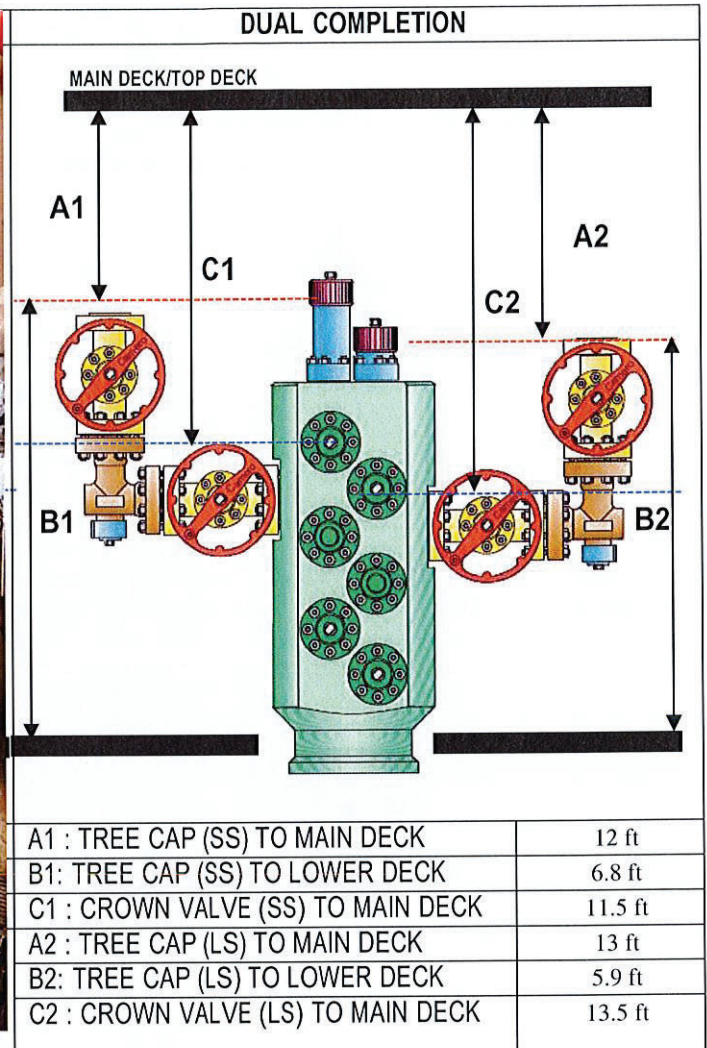
DULANG D-04



DIMENSION BID

CASED HOLE SERVICES DIVISION

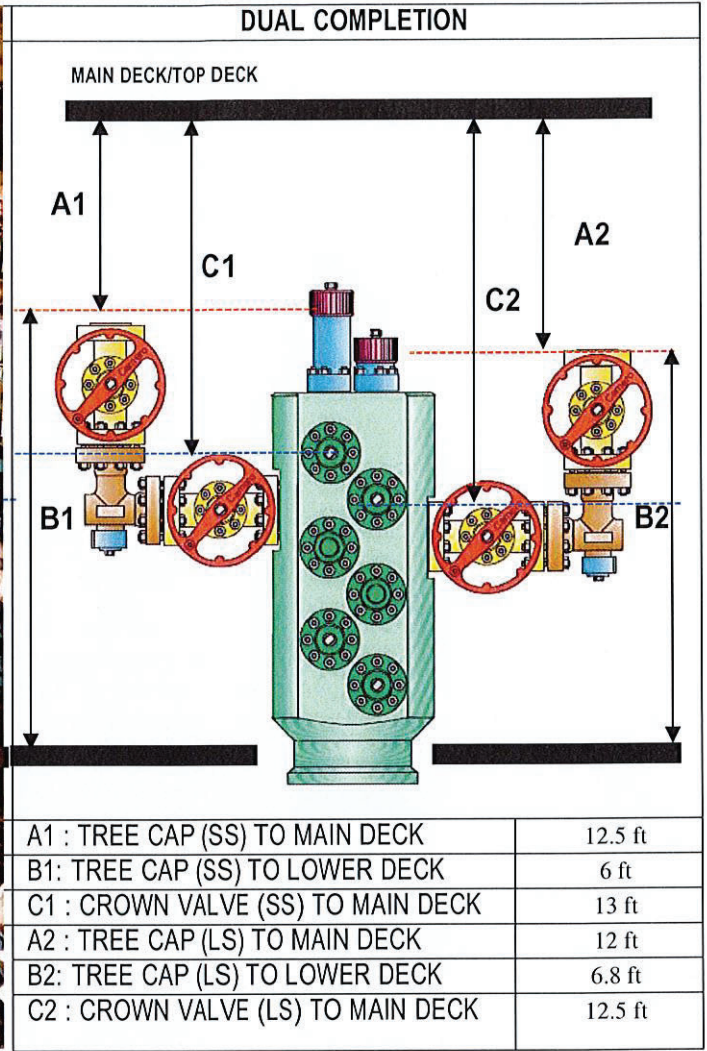
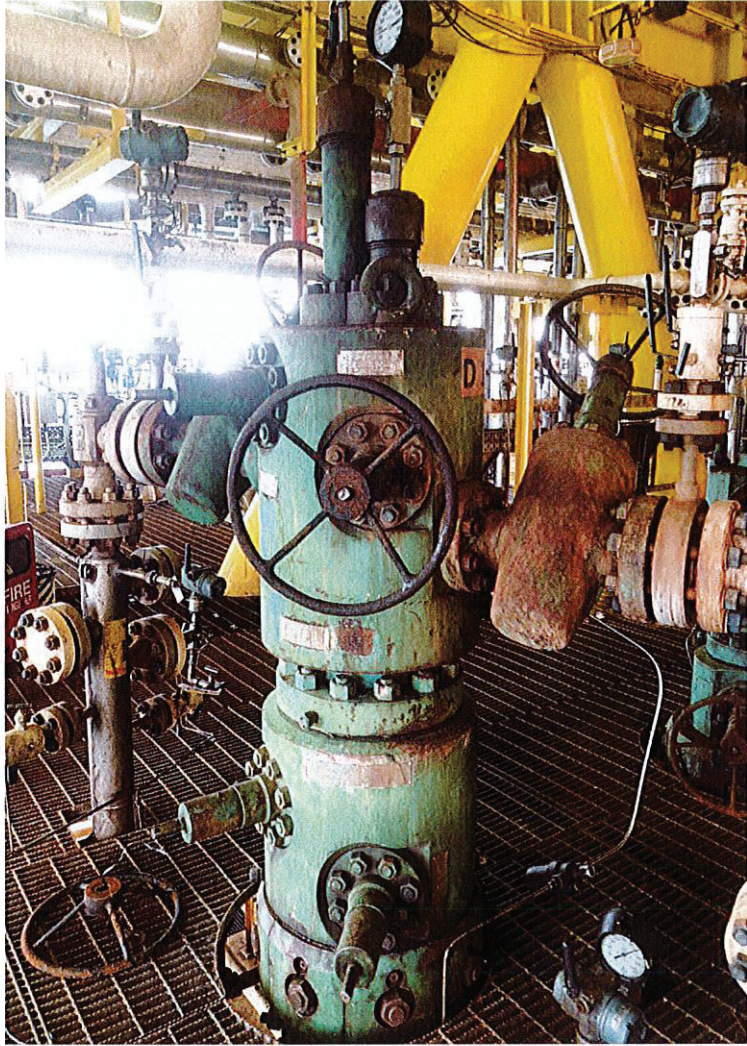
DULANG D-7



DIMENSION BID

CASED HOLE SERVICES DIVISION

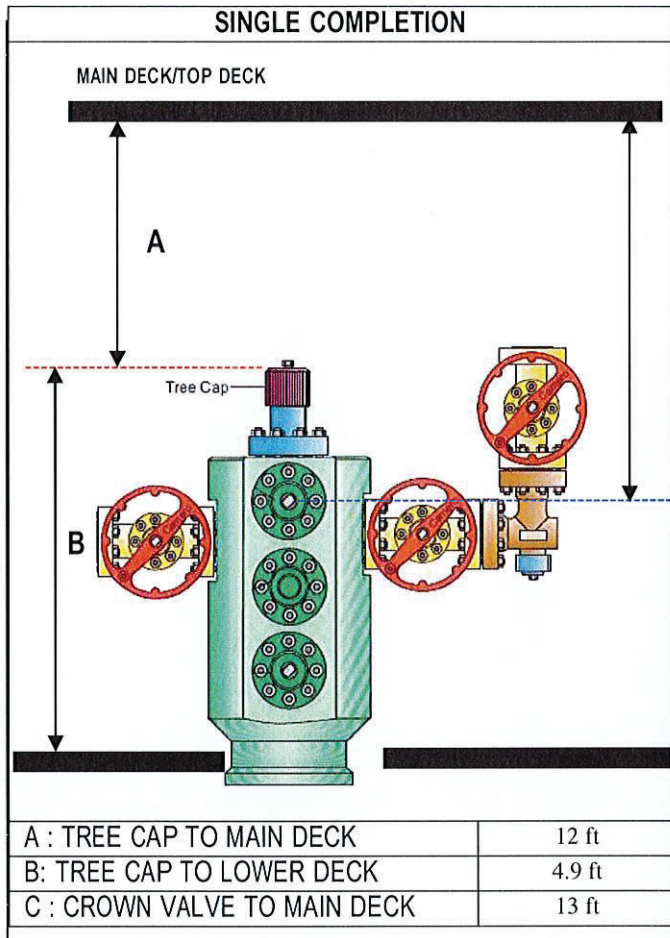
DULANG D-19



DIMENSION BID

CASED HOLE SERVICES DIVISION

DULANG D-13



DIMENSION BID

CASED HOLE SERVICES DIVISION

SECTION C UTILITIES ONBOARD PLATFORM

DIESEL SUPPLY

SUPPLY TYPE : HOSE JERRY CAN VALVE TAP CAM LOCK

DIESEL TYPE : DIESEL VALVE WITH HOSE

CONNECTION TYPE : VALVE

HOSE LENGTH : 3 M

WATER SUPPLY

SUPPLY TYPE : HOSE TOTE TANK JERRY CAN TAP
 VALVE 1/4" FITTING 1/2" FITTING CAM LOCK

WATER TYPE : FRESH WATER SEA WATER TREATED SEA WATER

CONNECTION TYPE : N/A

HOSE LENGTH : N/A

ELECTRICAL POWER SUPPLY

ELECTRICAL POWER SUPPLY WILL BE SUPPLIED FROM GENERATOR SET AND 3 FLOODLIGHTS FOR 24HRS OPS

SUPPLY TYPE : AC DC

VOLTAGE : 110V 240/220V 415V 440V

PHASING : SINGLE PHASE 3-PHASE

MAX CURRENT : 1A 5A 10A 12/15A 20A

CONNECTION TYPE : FLYING LEADS ZONE 2 CONNECTOR (PLS SPECIFY TYPE)

TAPPED FROM DISTRIBUTION PANEL

CABLE LENGTH :

DIMENSION BID

CASED HOLE SERVICES DIVISION

COMPRESSED AIR SUPPLY

NO COMPRESSED AIR IS USED FOR THIS OPERATION.

SUPPLIED PRESSURE : 80-110 PSIA 100-150 PSIA > 150 PSIA

SUPPLIED CFM : 20-50 50-100 100-200

DRIED AIR ? : YES NO

CONNECTOR TYPE : 1" CHICAGO 2" CHICAGO ¾" NPT 1" NPT
 ½" FITTING ¾" FITTING 1" FITTING VALVE

HOSE LENGTH :

Additional Picture for Reference

