

# D18 Post Job Report

By FARHAN AMRAN

# Background

## Well info and Job Objectives

Well Name	107-S01
Field	D18-A
Tubing	3-1/2", 9.2# UHP15CR-125
Casing	7" 29 PPF L80
Min ID	2.75" @ 6595.9 ft MDDF (NO-GO)

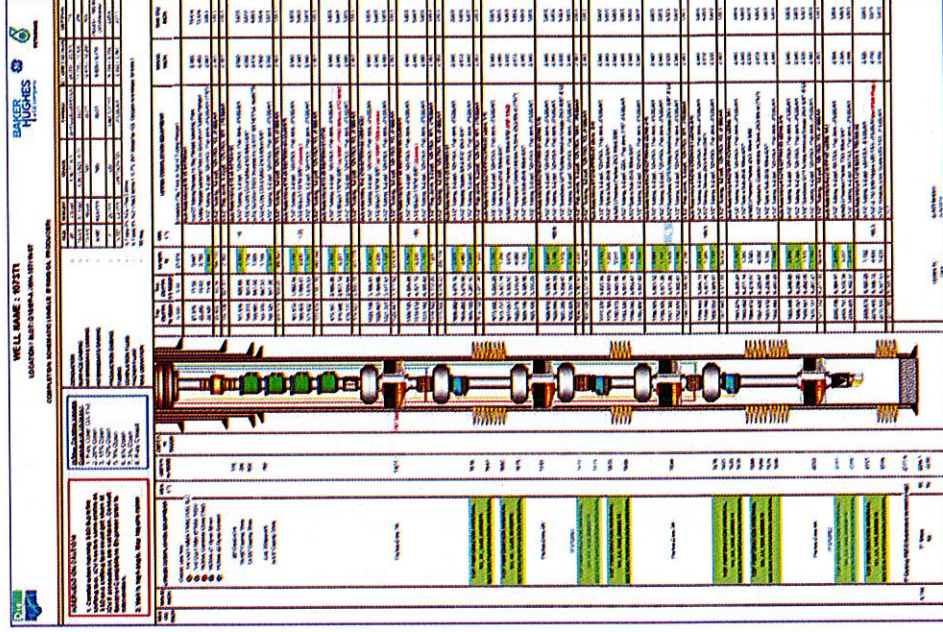
E Line Operation with 24 Hours Operation at PCSB D-18-107:

### Main Objective:

- To perform Zone of Change (ZOC) to isolate UL42 sand to reduce gas rate by 0.70 MMscfd. ZOC will reduce field flaring to allow other well (D18-404) to flow with risked production of 370 BOPD

### Secondary Objective:

- To perform SSD #2 shifting operations to isolate M24 for pressure build up and to perform Raptor contact logging operation at M30 - M34, and M44 sands.



# Operation Summary (1)

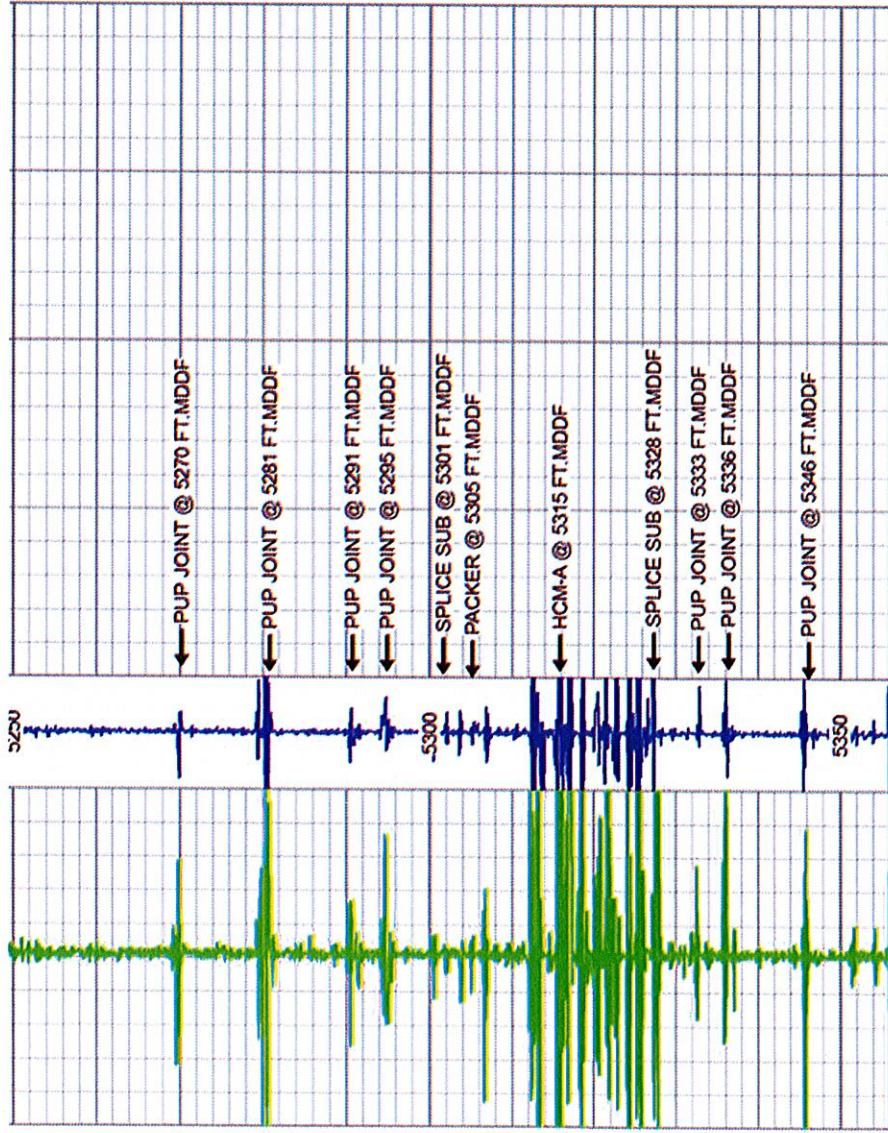
RU N	DATE	SERVICE	INTERVAL (FT-MDDF)	REMARK
1	6/5/2023	TRACTOR + CCL + WELL CLEANER	6965	COMPLETED
2	7/5/2023	TRACTOR + RAPTOR	CO 6877 – 6965 N-VISION 6207 – 6470 SIGMA 6095 - 6540	ENCOUNTERED HUD AT 6904 FT.MDDF. CO MODE LOGGING HAS BEEN OPT OUT.
3	8/5/2023	TRACTOR + STROKER + WELL KEY AT SSD #2	5898.5	COMPLETED
4	9/5/2023	TRACTOR + PLT (SHUT IN MODE)	6900 – 5300	COMPLETED
5	10/5/2023	TRACTOR + PLT (FLOWING MODE)	6604 – 6550	COMPLETED
6	11/5/2023	TRACTOR + STROKER + WELL KEY AT ICV #1 (1 <sup>st</sup> ATTEMPT)	5315.47	UNABLE TO MANIPULATE ICV #1

# Operation Summary (2)

RUN	DATE	SERVICE	INTERVAL (FT-MDDF)	REMARK
7	12/5/2023	TRACTOR + STROKER + WELL KEY AT ICV #1 (2 <sup>nd</sup> ATTEMPT)	5315.47	UNABLE TO MANIPULATE ICV #1
8	13/5/2023	TRACTOR + STROKER + WELL KEY AT SSD #2	5898.5	COMPLETED
9	14/5/2023	TRACTOR + TUBING DRIFT	5315.47	COMPLETED
10	15/5/2023	TRACTOR + INTERWELL LOWER PACKER	5315.47	COMPLETED
11	15/5/2023	TRACTOR + STROKER + GS PT + SPACER PIPE	5315.47	COMPLETED
12	16/5/2023	TRACTOR + INTERWELL UPPER PACKER	5315.47	COMPLETED

# Data Compilation

## Correlation Pass



This run was made to correlate depth and to confirm any anomaly throughout the well tubing and casing prior to every critical run such shifting SSD and setting packers.

It was observed that all data from the sensors are good. Offset for the Correlation with WSS

# Thank you !

Questions and Answering Session